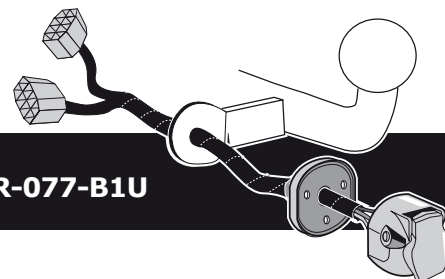


FORD RANGER TKE (Mk2)	01/2016 >>
FORD RANGER TKA Raptor	01/2019 >>
FORD RANGER TRB	01/2023 >>
FORD RANGER TRA Raptor	01/2023 >>

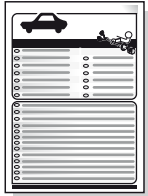
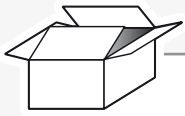


Partnr.: FR-077-B1U

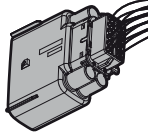
- Fitting instructions electric wiring kit tow bar with 12-N socket up to DIN/ISO Norm 1724.
- We would expressly point out that assembly not carried out properly by a competent installer will result in cancellation of any right to damage compensation, in particular those arising by virtue of the product liability act.
- Contents of these kits and their fitting manuals are subject to alteration without notice, please ensure that these instructions are read and fully understood before commencing installation.
- Do not overload circuits; the maximum loads per connection are detailed in this manual.
- Attention! Before Installation, please read this manual carefully and inform your customer to consult the vehicle owners manual to check for any vehicle modifications required before towing.
- In the event of functional problems, troubleshooting must be limited to about 0.5 hours, contact the technical support:
ukts@ecs-electronics.com / 07440 202 052.



Part list

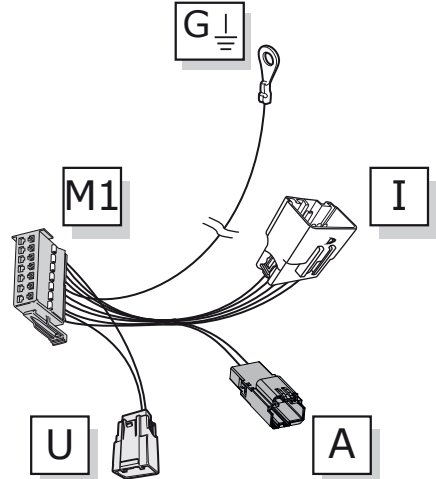


C

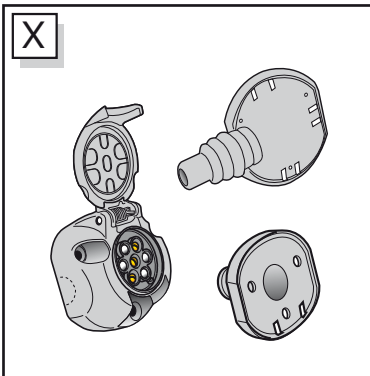


X

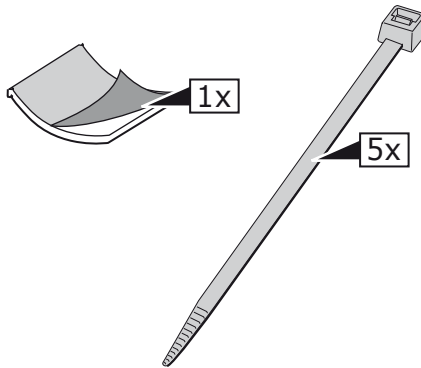
M



X



1x



5x

UN-243-YZ

Optional reverse lamp
pre-wire extension included



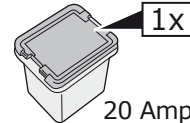
Page 14



3x

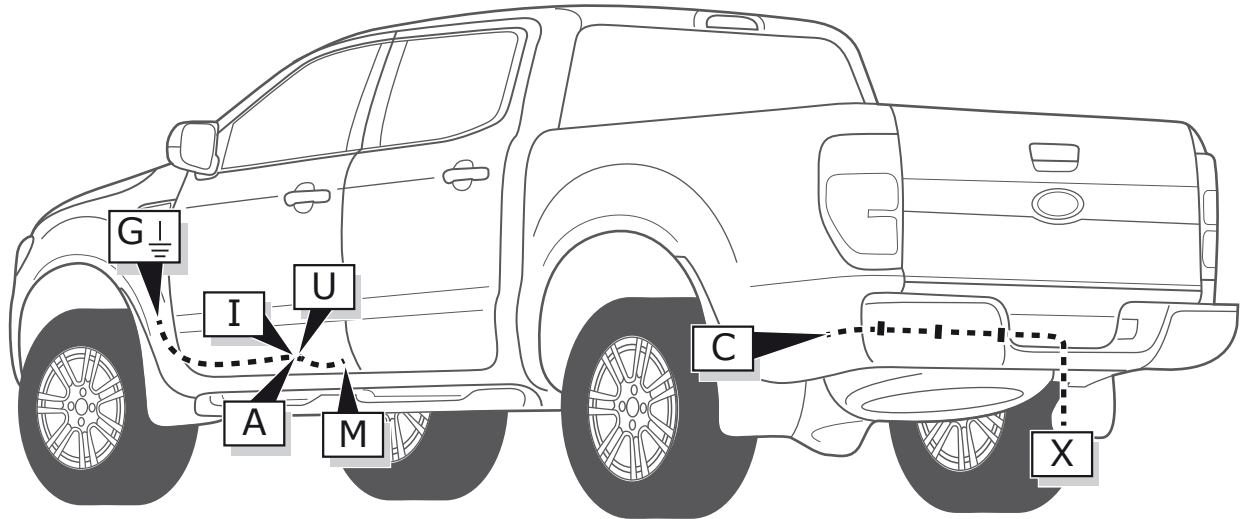


3x

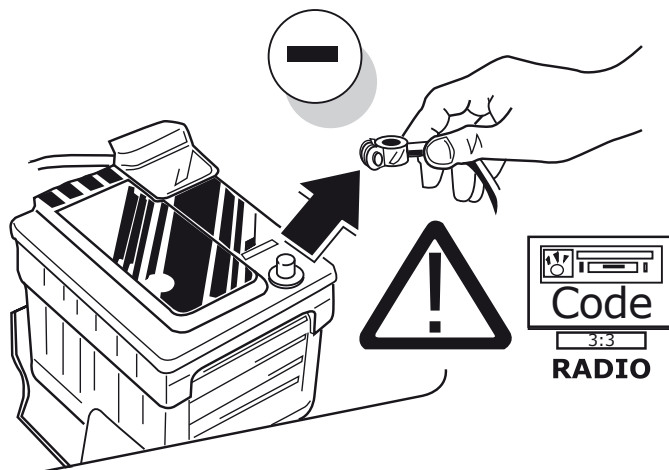


1x

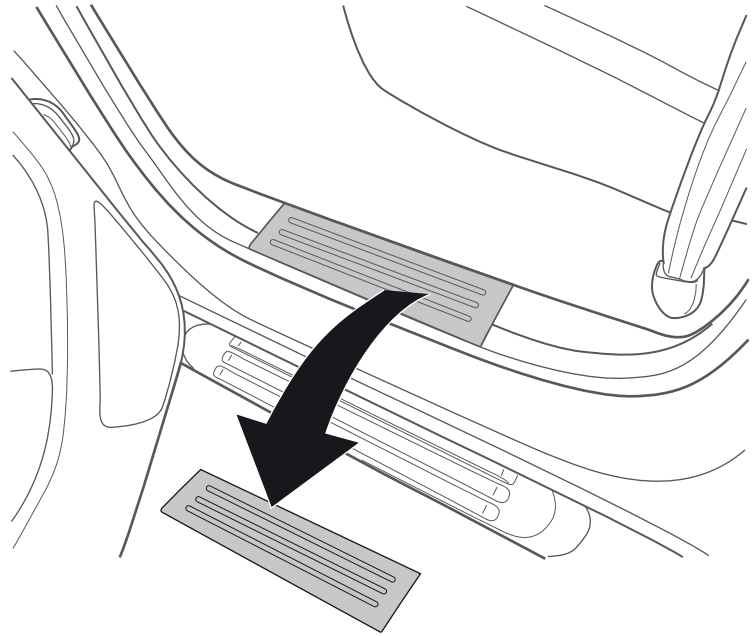
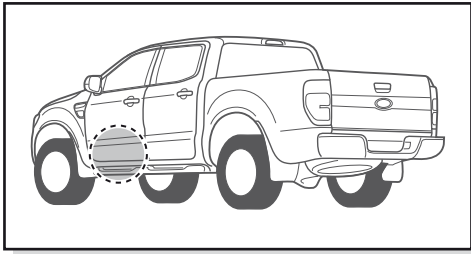
20 Amp.



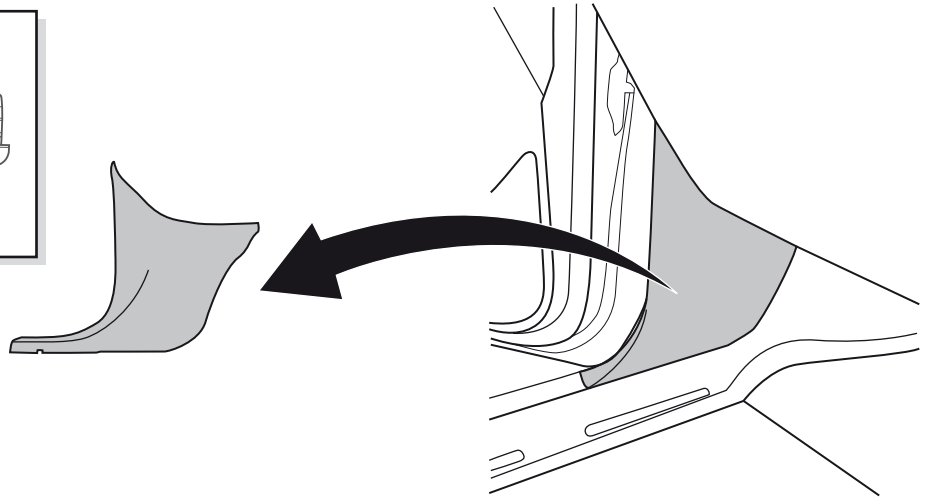
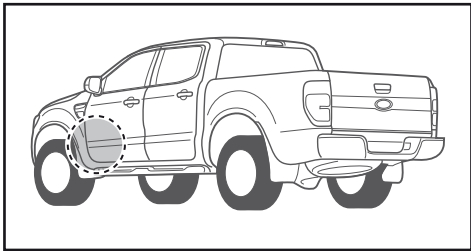
1



2

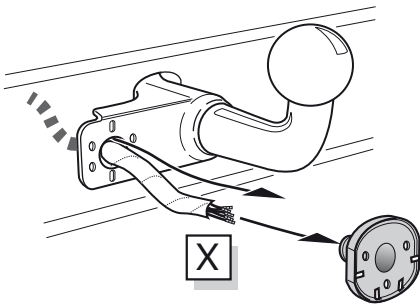


3

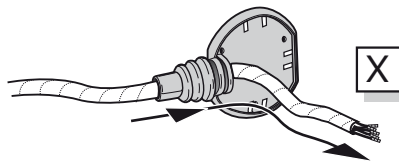


A

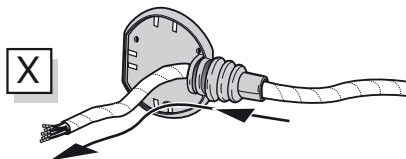
Option 1



Option 2



Option 3

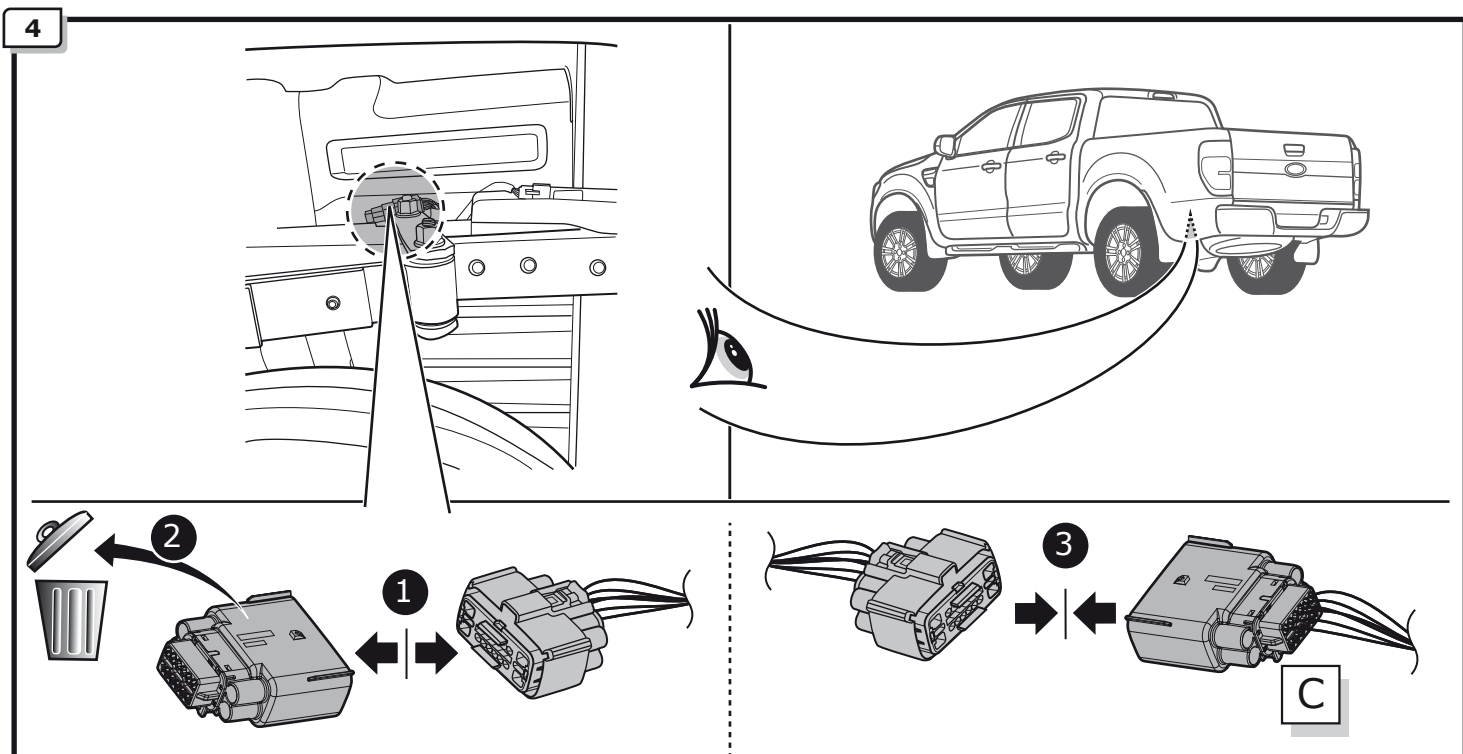
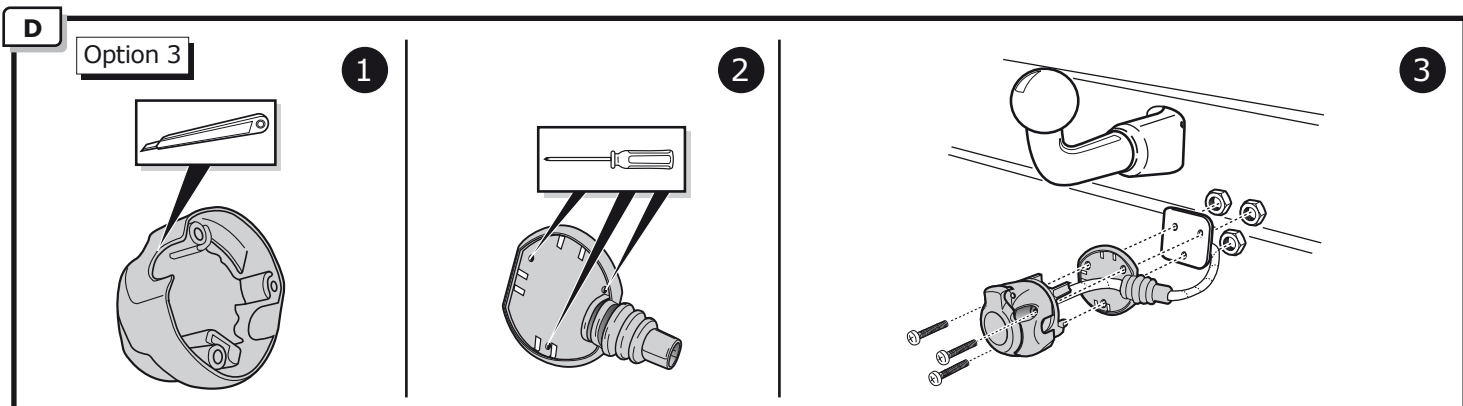
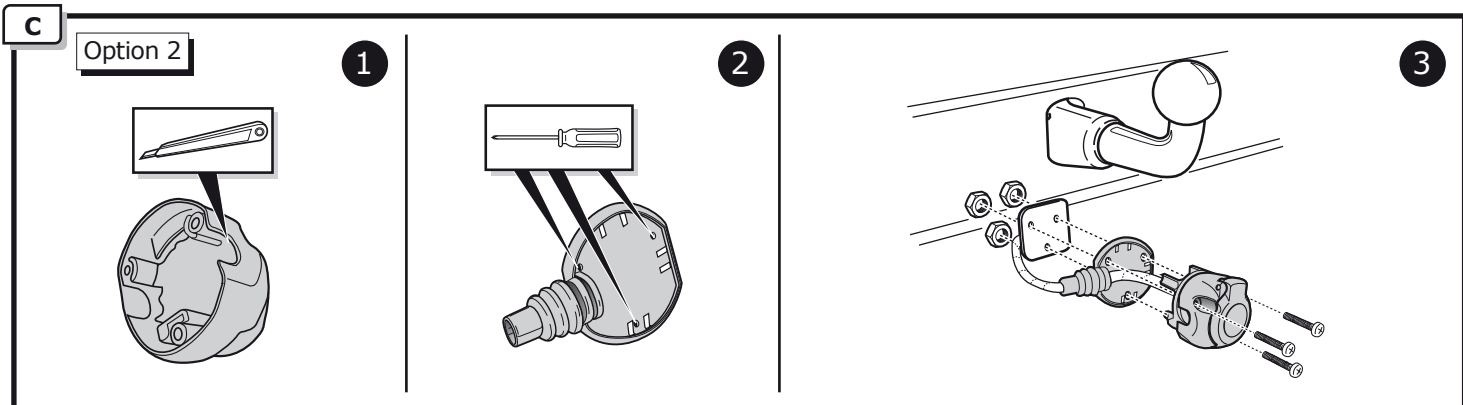
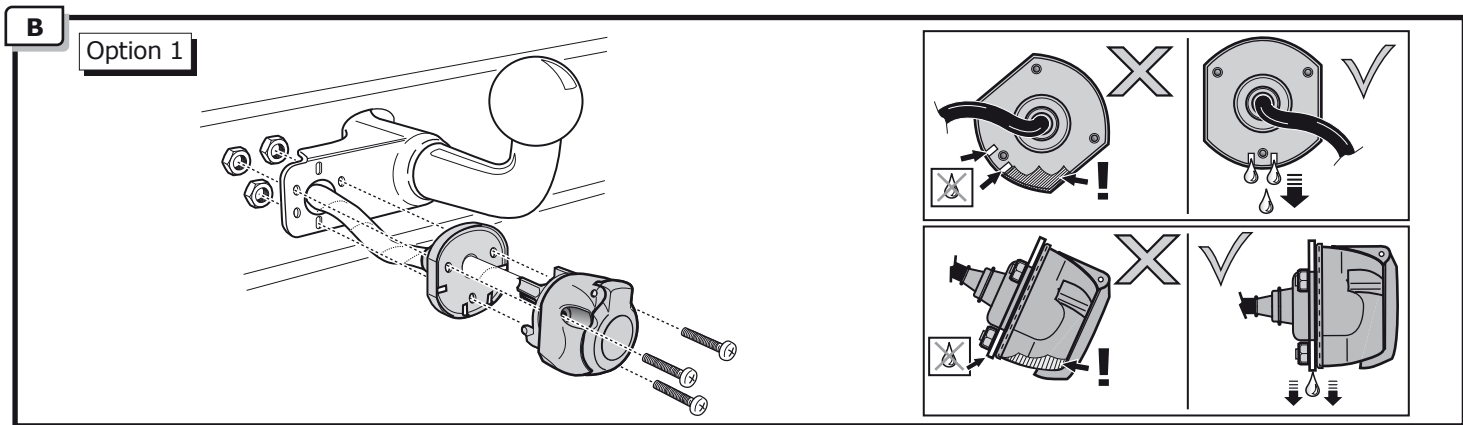


INFO

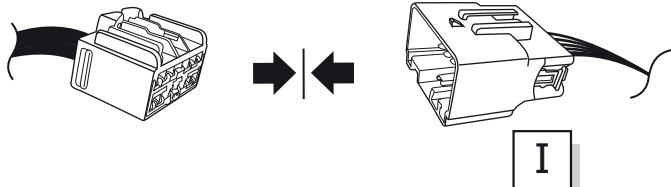
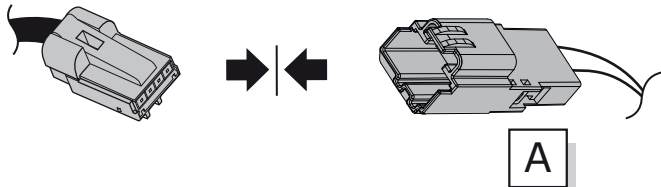
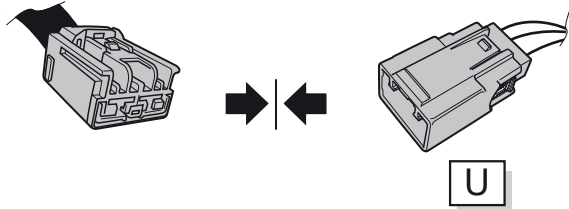
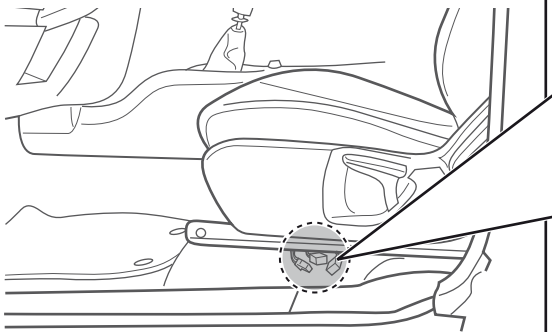
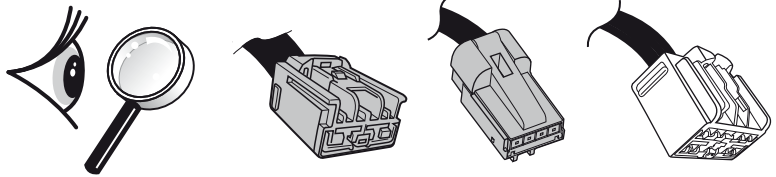
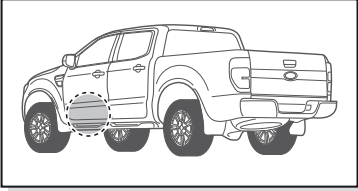
SOCKET CONNECTION



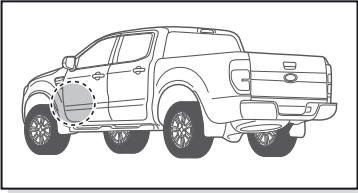
Page 13



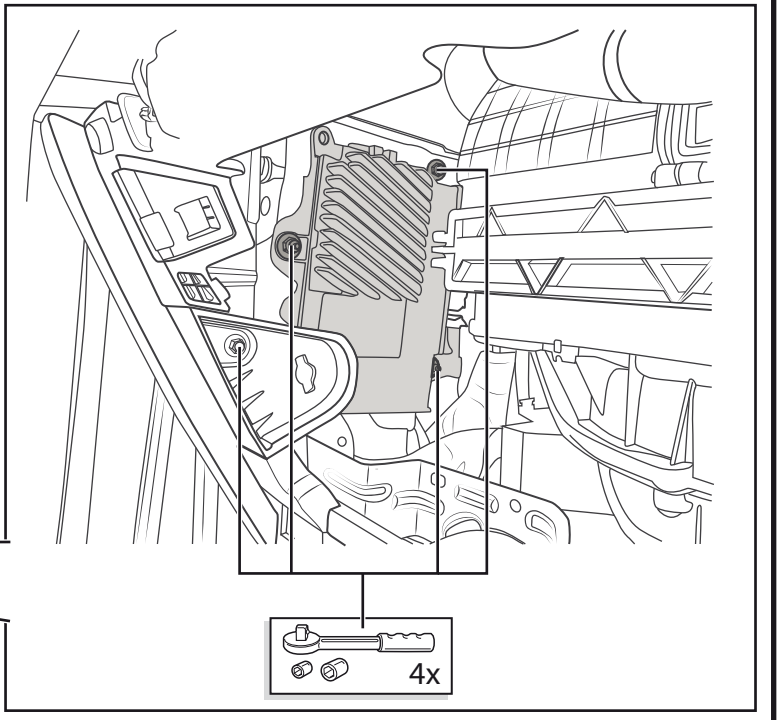
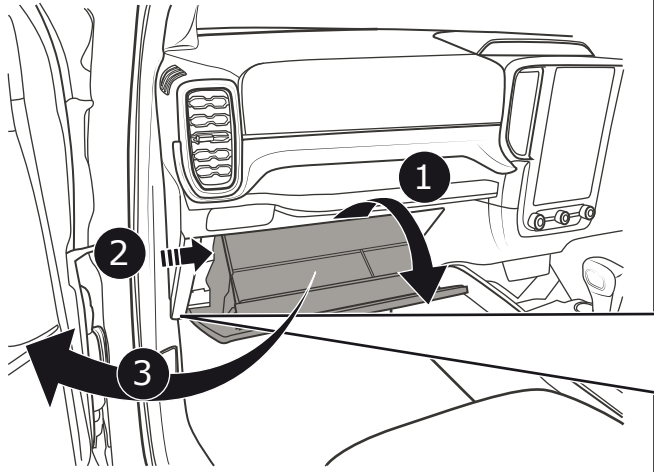
<< 2023



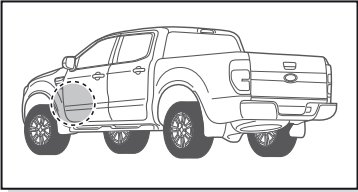
6



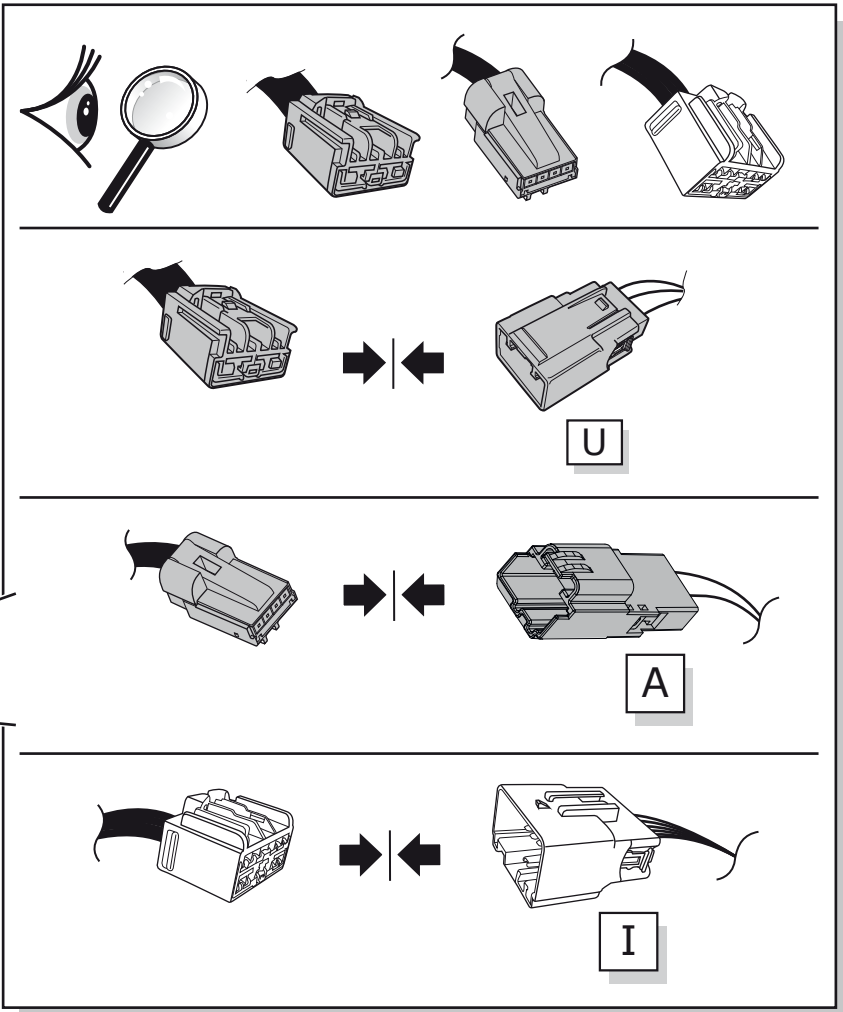
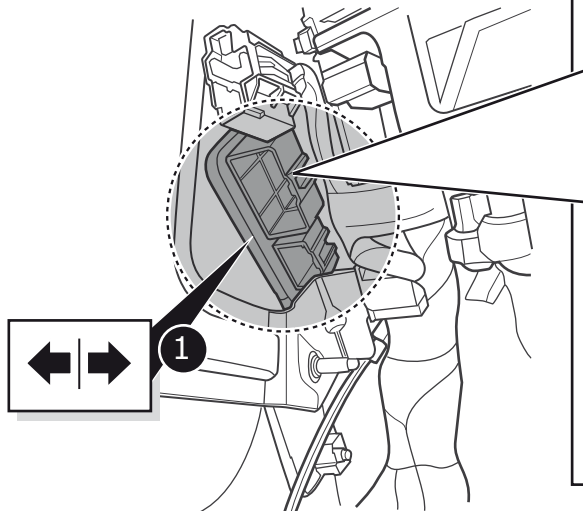
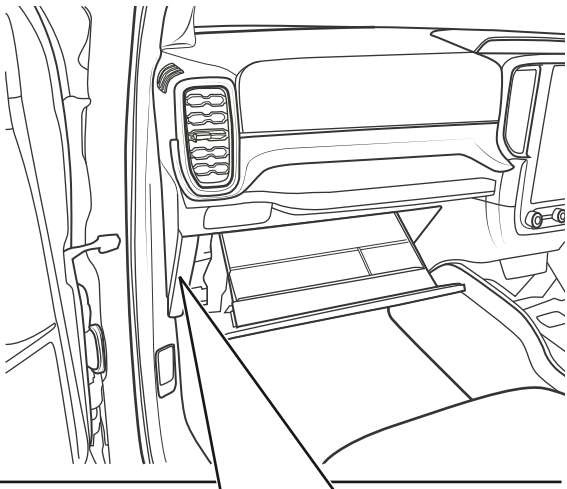
2023 >>



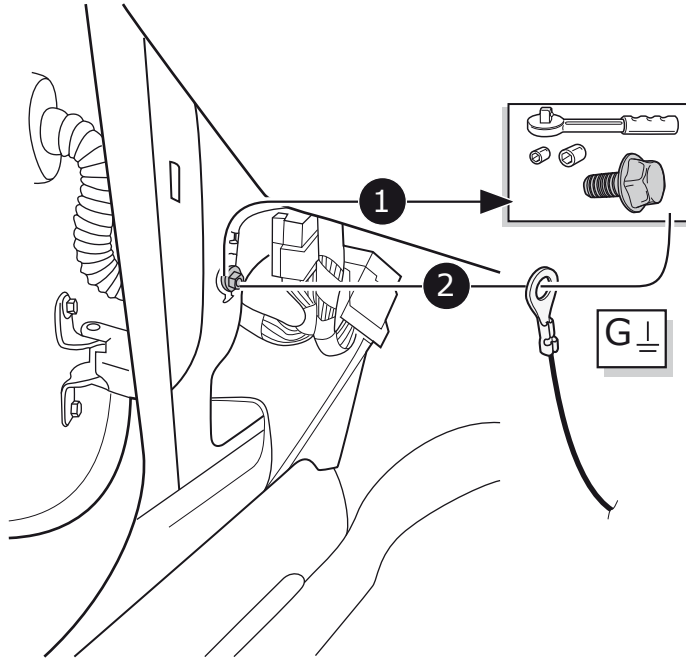
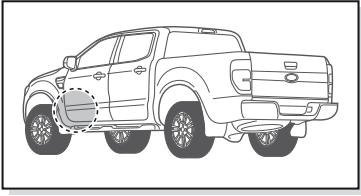
7



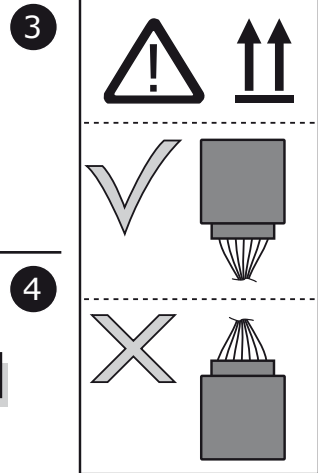
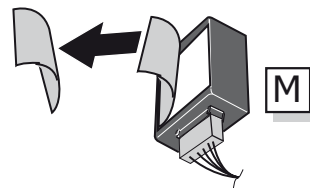
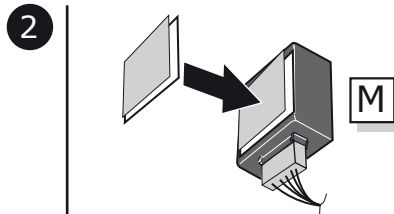
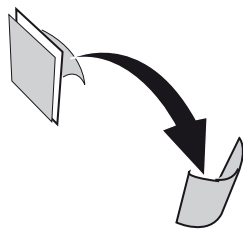
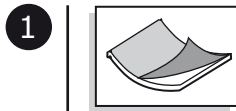
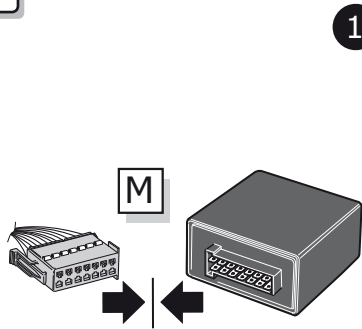
2023 >>



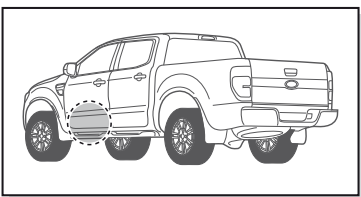
8



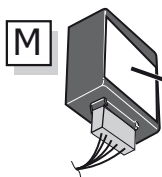
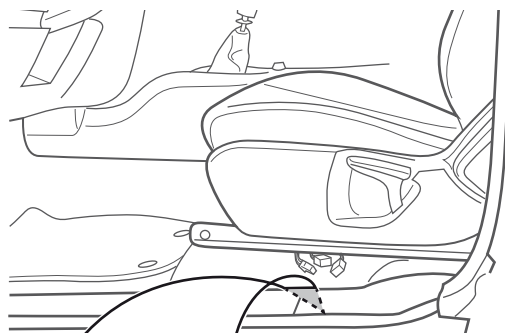
9



10

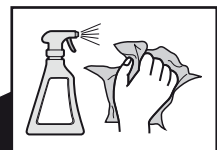


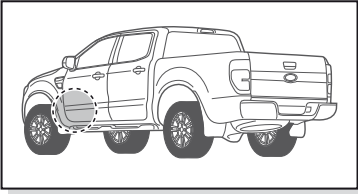
<< 2023



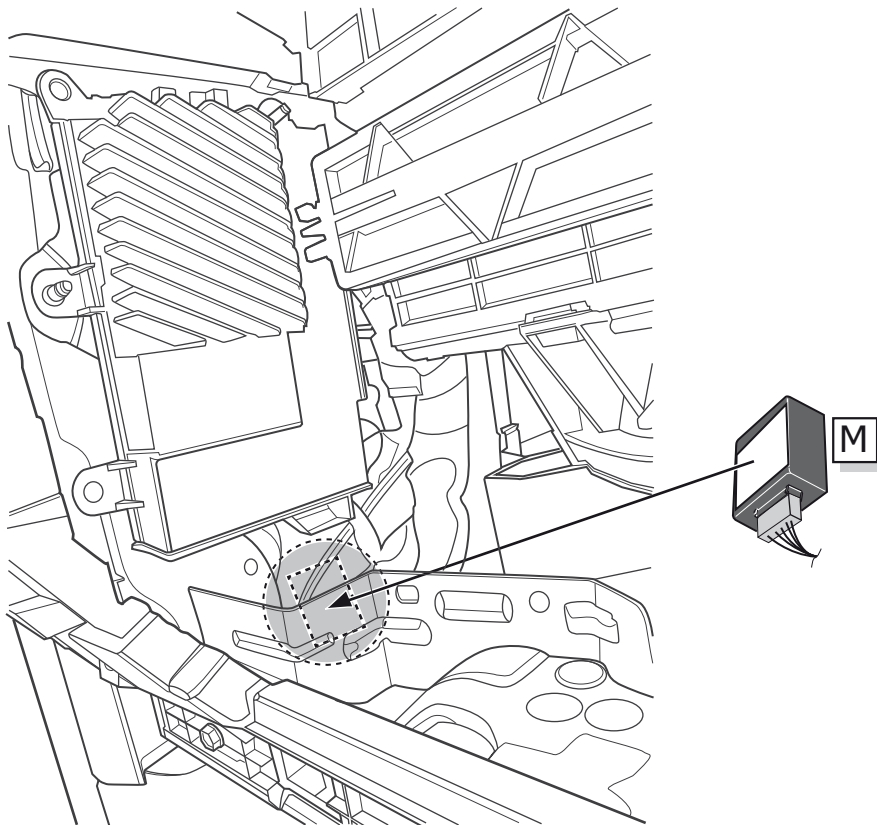
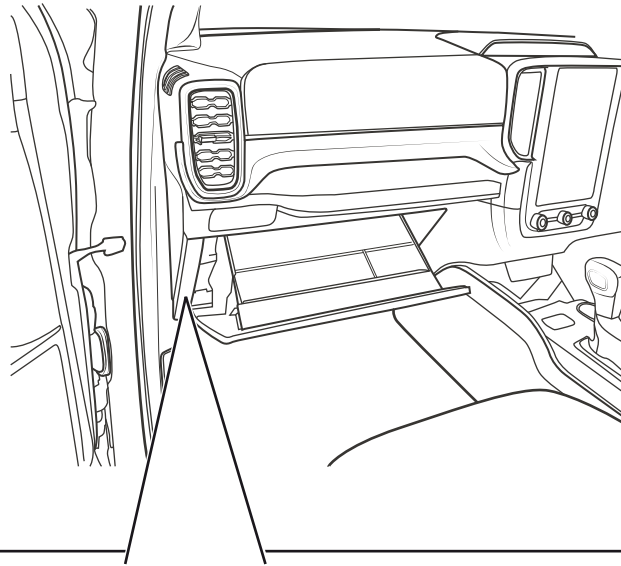
2

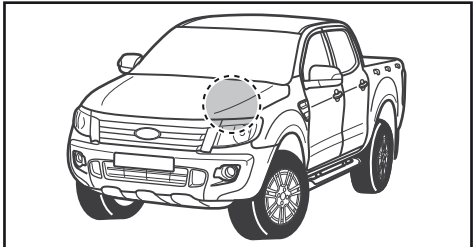
1



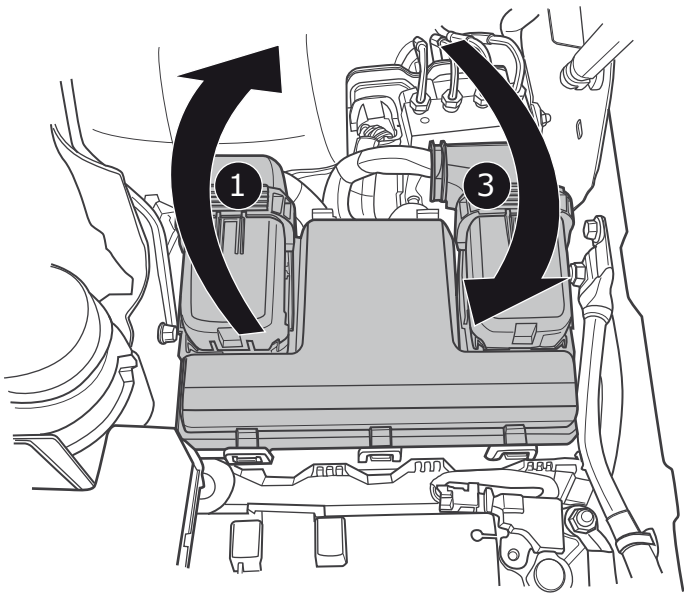


2023 >>





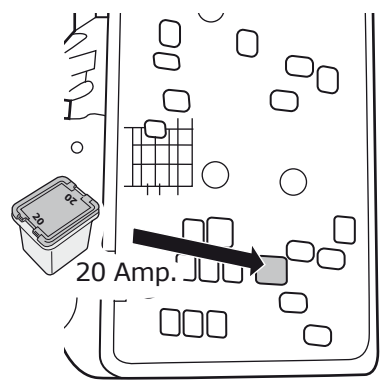
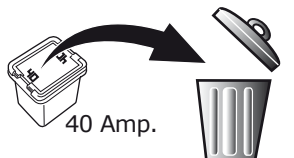
<< 2023



2

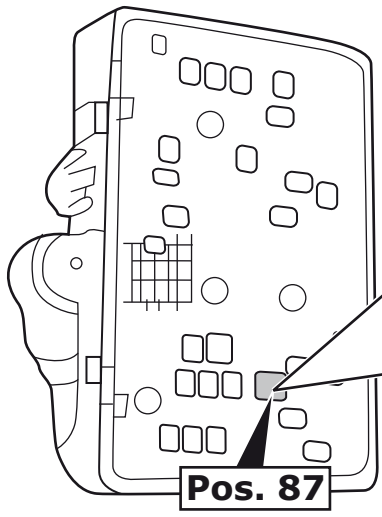
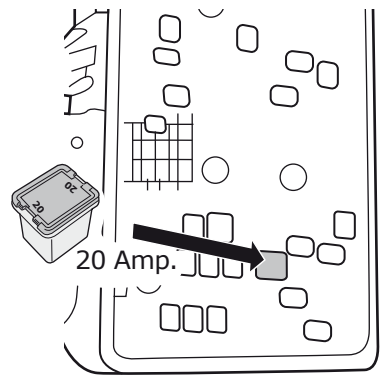
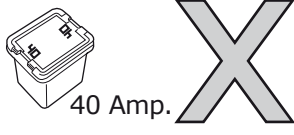
Option 1

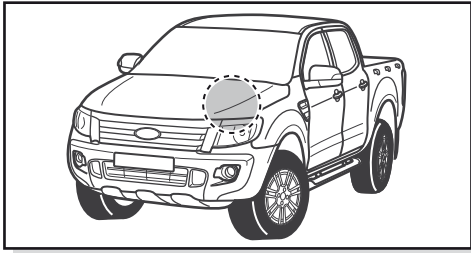
Pos. 87



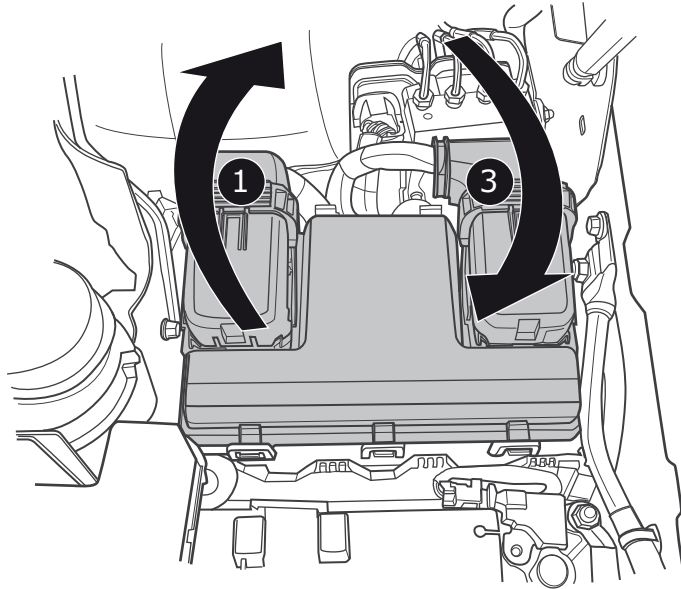
Option 2

Pos. 87

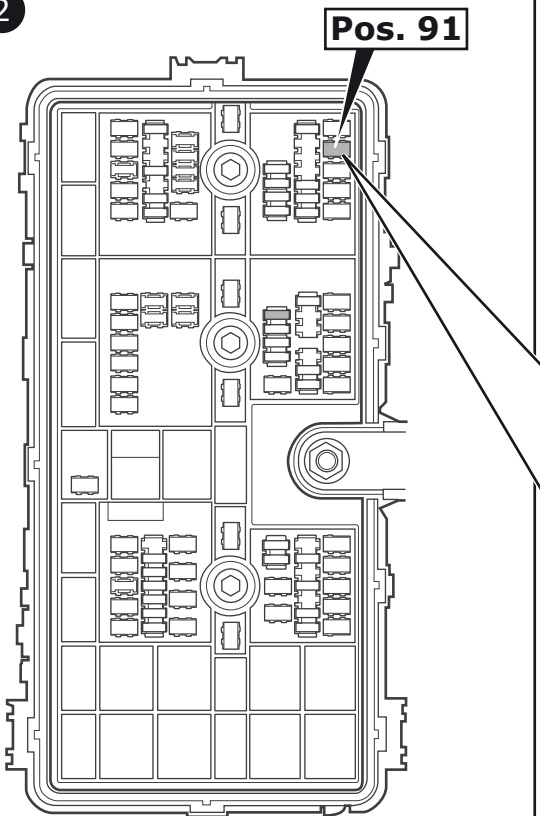




2023 >>

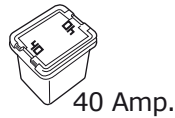


2

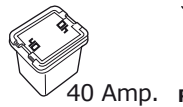


Option 1

Pos. 91



40 Amp.

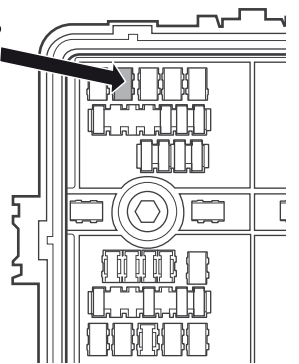
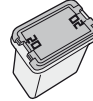


40 Amp.



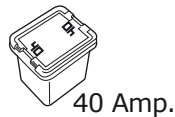
REUSEABLE

20 Amp.



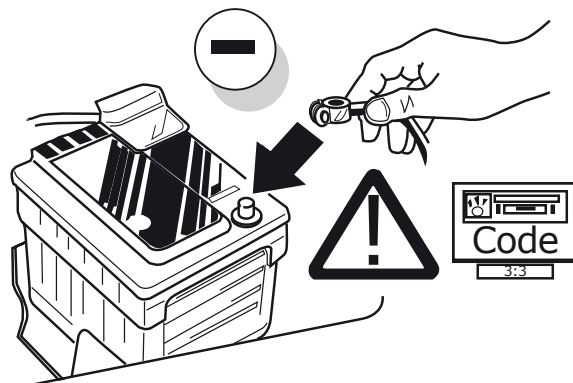
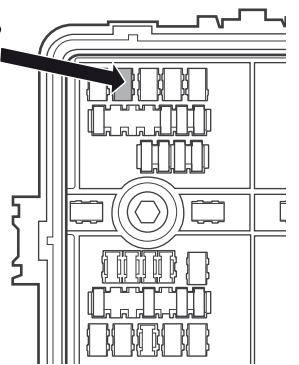
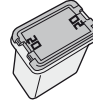
Option 2

Pos. 91



40 Amp.

20 Amp.

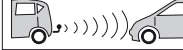


15

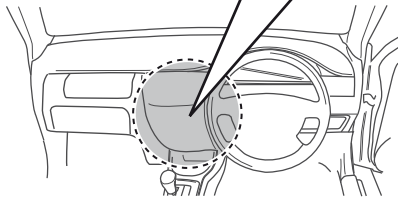
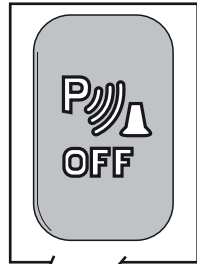
Option 1

Manual PDC

PARK DISTANCE CONTROL



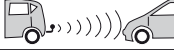
PARK DISTANCE CONTROL



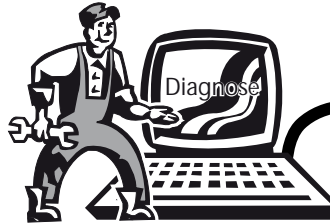
Option 2

Auto PDC

PARK DISTANCE CONTROL



PARK DISTANCE CONTROL



16

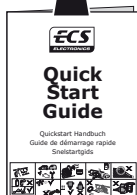
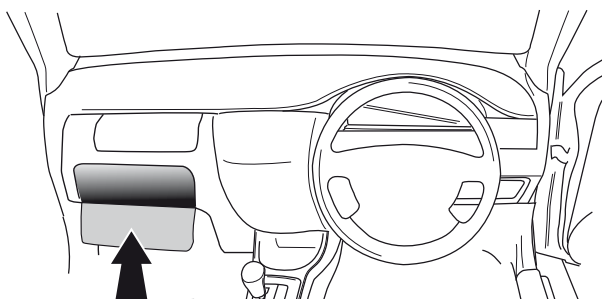


TEST ALL THE CIRCUITS WITH A TEST DEVICE WITH THE CORRECT POWER LOAD FOR EACH FUNCTION. A TEST DEVICE WITH LED'S CANNOT BE USED FOR THIS PURPOSE.

INFO

REINSTALL TRIM.

17

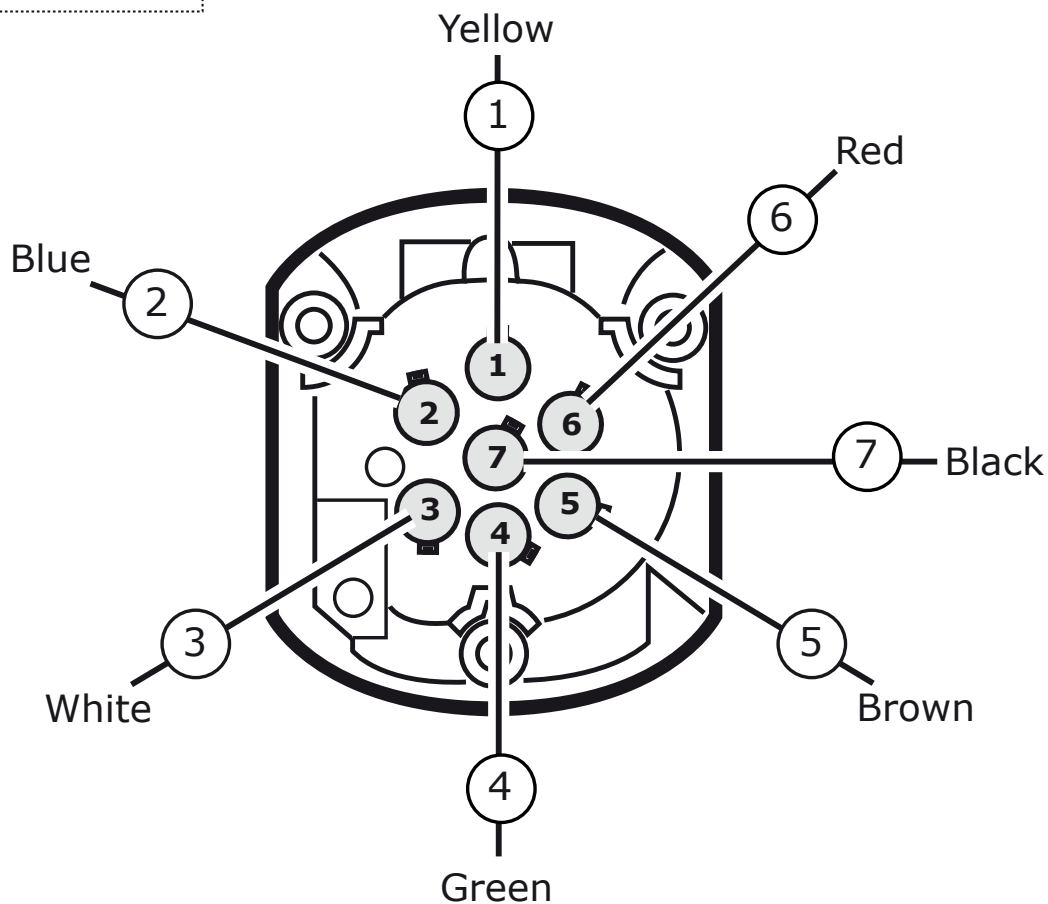
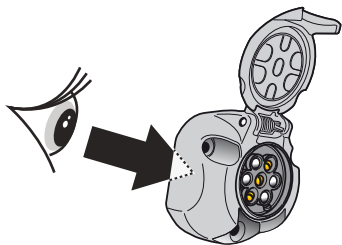


TECHNICAL SUPPORT

CALL 07440 202 052

ECS ELECTRONICS MONDAY TO FRIDAY
08.00 - 11.00 am
12.00 - 05.00 pm
ukts@ecs-electronics.com
www.ecs-electronicsuk.co.uk

SOCKET CONNECTION

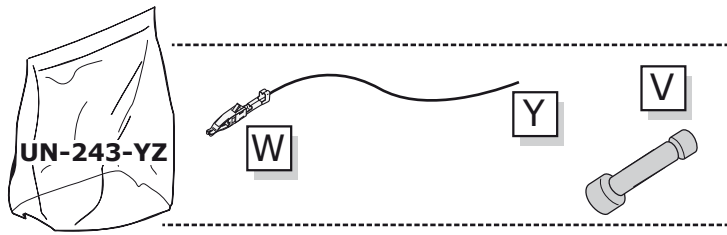


SOCKET CONNECTION

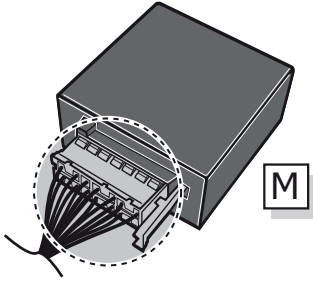
DIN/ISO 1724	←		⏚ 1-7	→			
	1/L	2	3/31	4/R	5/58-R	6/54	7/58-L
Pmax	21W	2x21W		21W	52W	3x21W	52W
Colour	Yellow	Blue	White	Green	Brown	Red	Black

UN-243-YZ Reverse lamp pre-wire extension

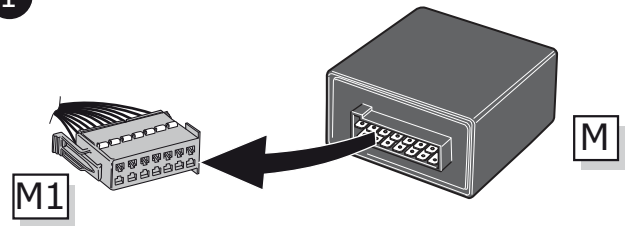
⚠ MAX = 21W



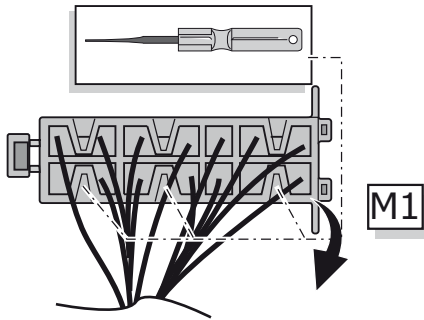
A



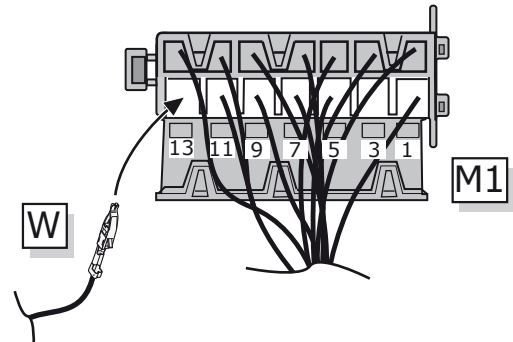
1



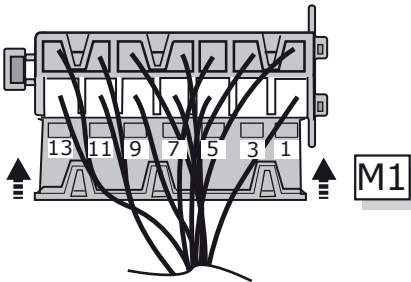
2



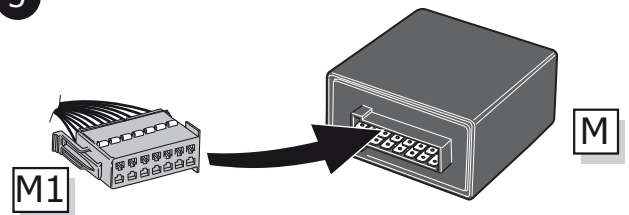
3



4



5



B

⚠ MAX = 21W

