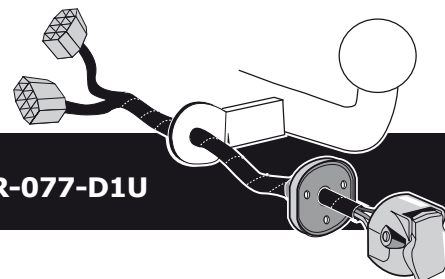


FORD RANGER TKE (Mk2)	01/2016 >>
FORD RANGER TKA Raptor	01/2019 >>
FORD RANGER TRB	01/2023 >>
FORD RANGER TRA Raptor	01/2023 >>

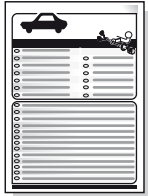
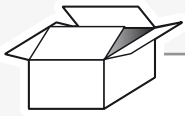


Partnr.: FR-077-D1U

- Fitting instructions electric wiring kit tow bar with 13-P socket up to DIN/ISO Norm 11446.
- We would expressly point out that assembly not carried out properly by a competent installer will result in cancellation of any right to damage compensation, in particular those arising by virtue of the product liability act.
- Contents of these kits and their fitting manuals are subject to alteration without notice, please ensure that these instructions are read and fully understood before commencing installation.
- Do not overload circuits; the maximum loads per connection are detailed in this manual.
- Attention! Before Installation, please read this manual carefully and inform your customer to consult the vehicle owners manual to check for any vehicle modifications required before towing.
- In the event of functional problems, troubleshooting must be limited to about 0.5 hours, contact the technical support:
ukts@ecs-electronics.com / 07440 202 052.



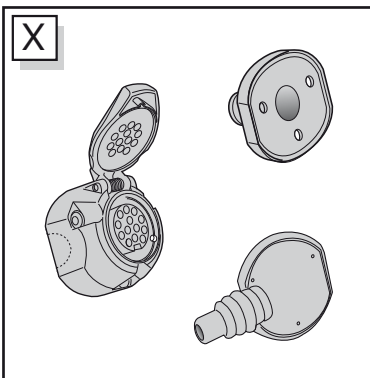
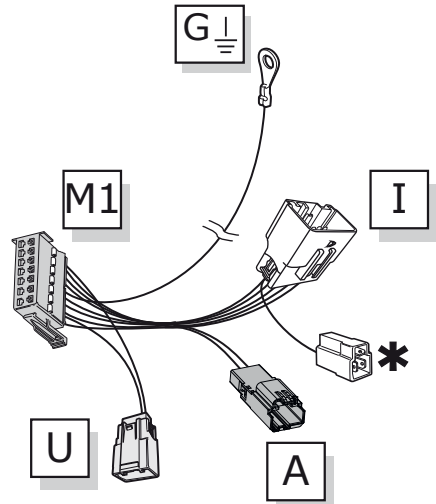
Part list



C



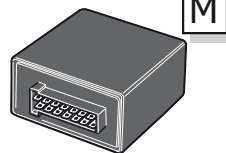
X



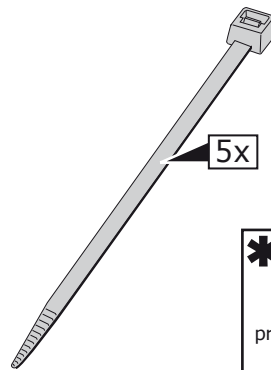
X



1x



M



5x

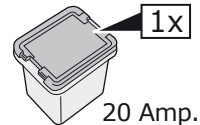
* OPTION +15 preparation for	
	 Red



3x

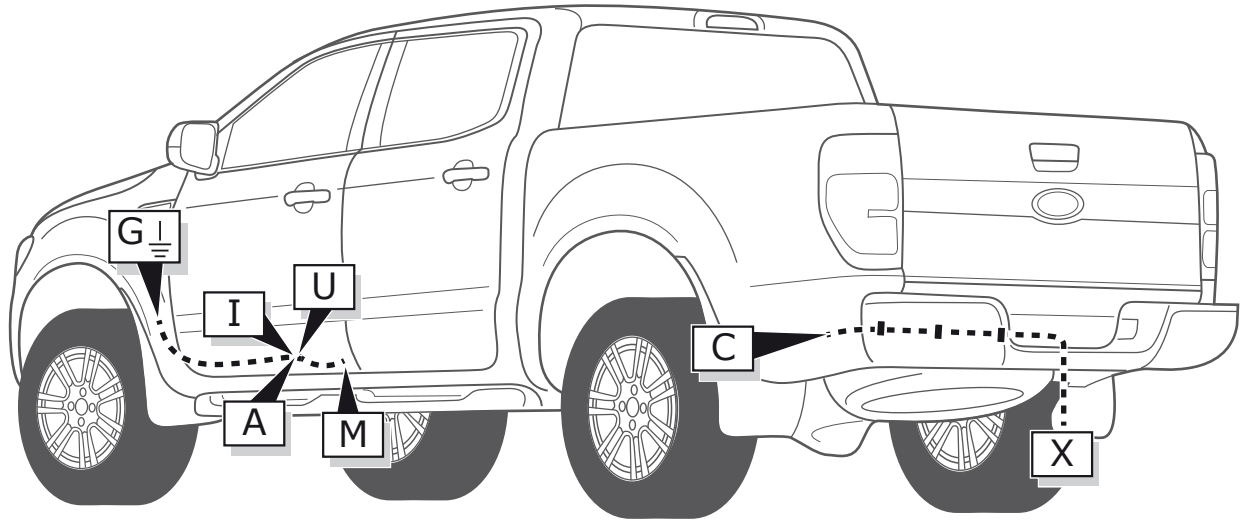


3x

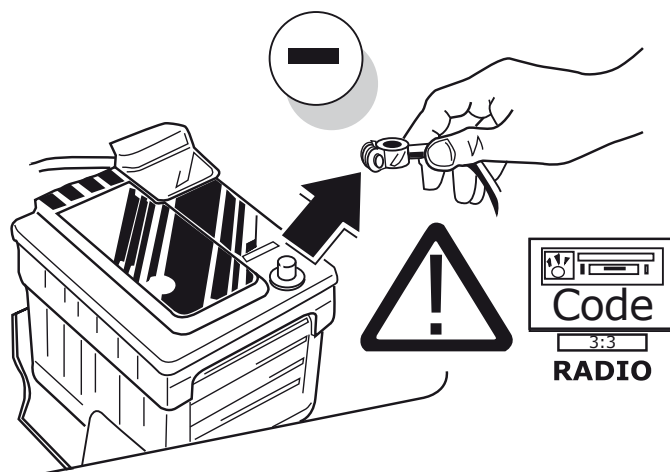


1x

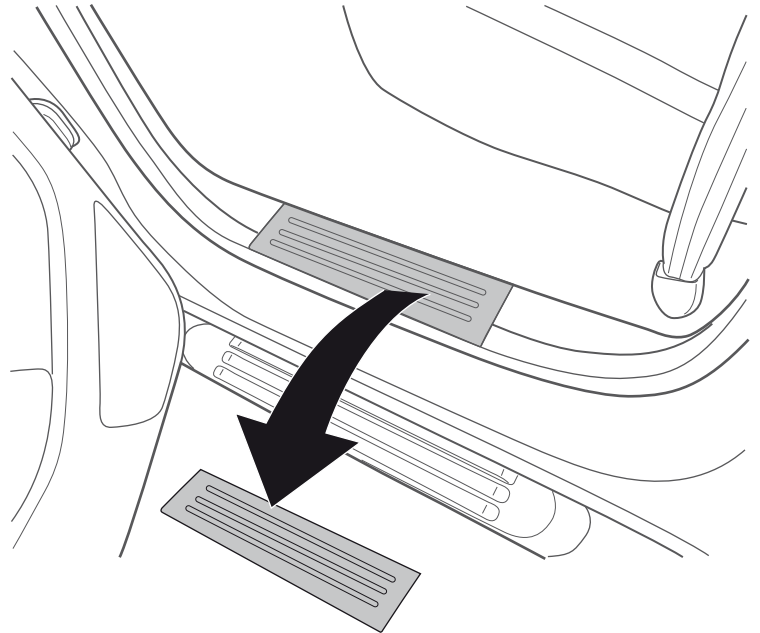
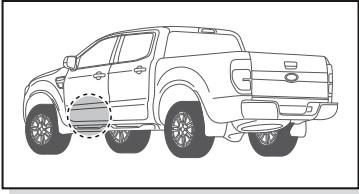
20 Amp.



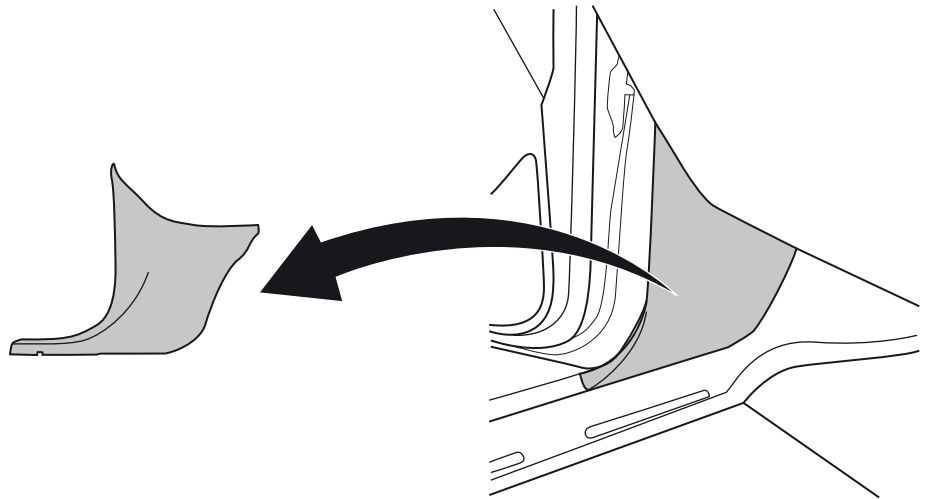
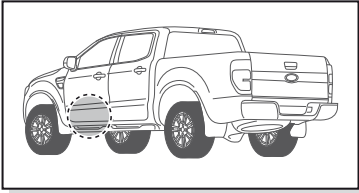
1



2

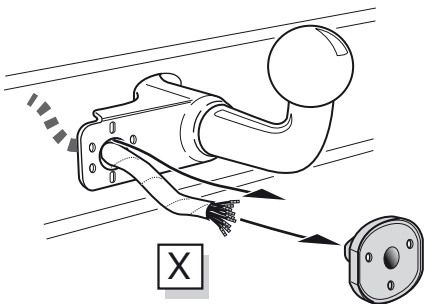


3

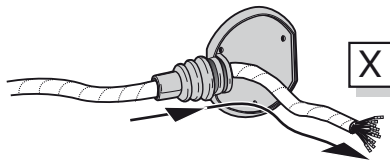


A

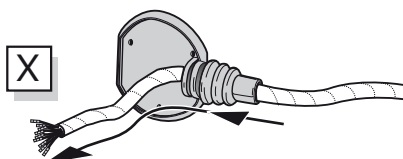
Option 1



Option 2



Option 3

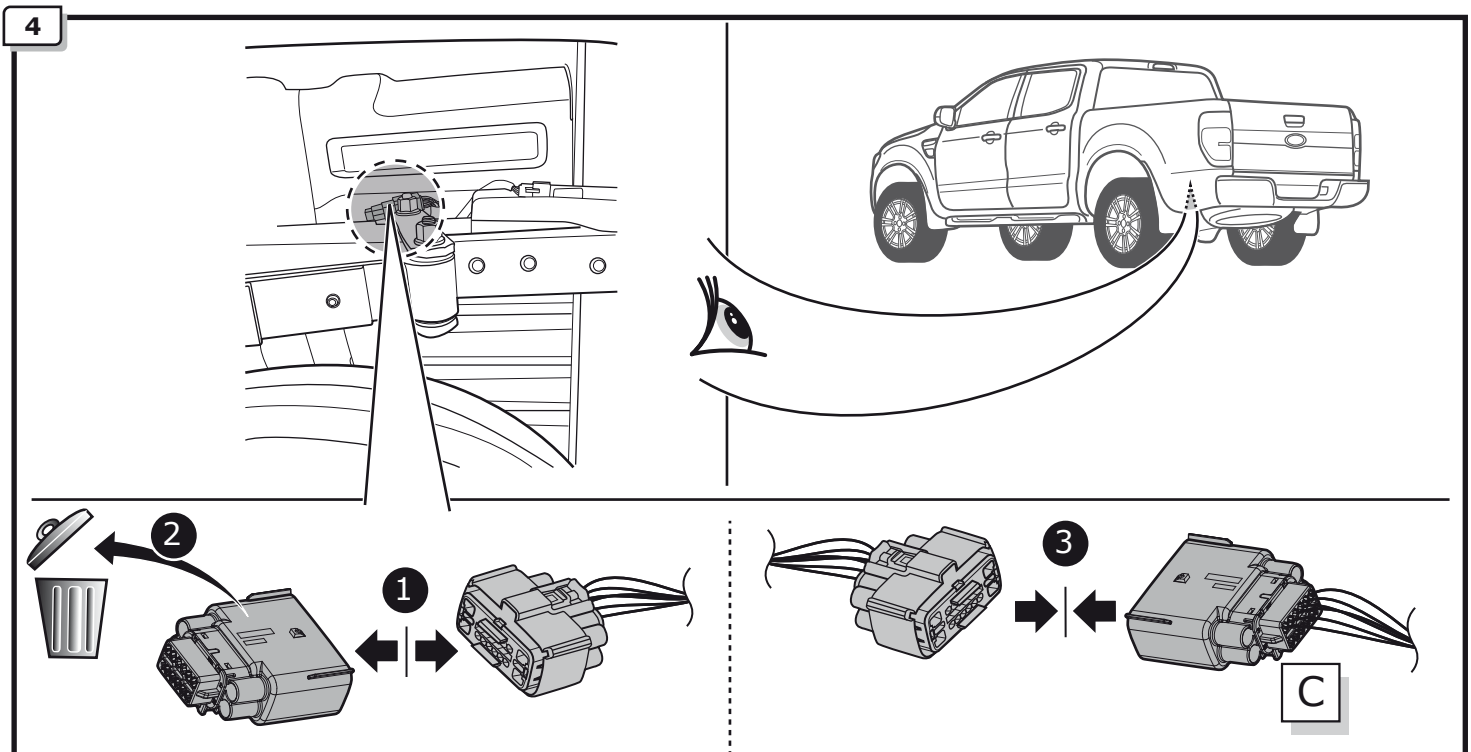
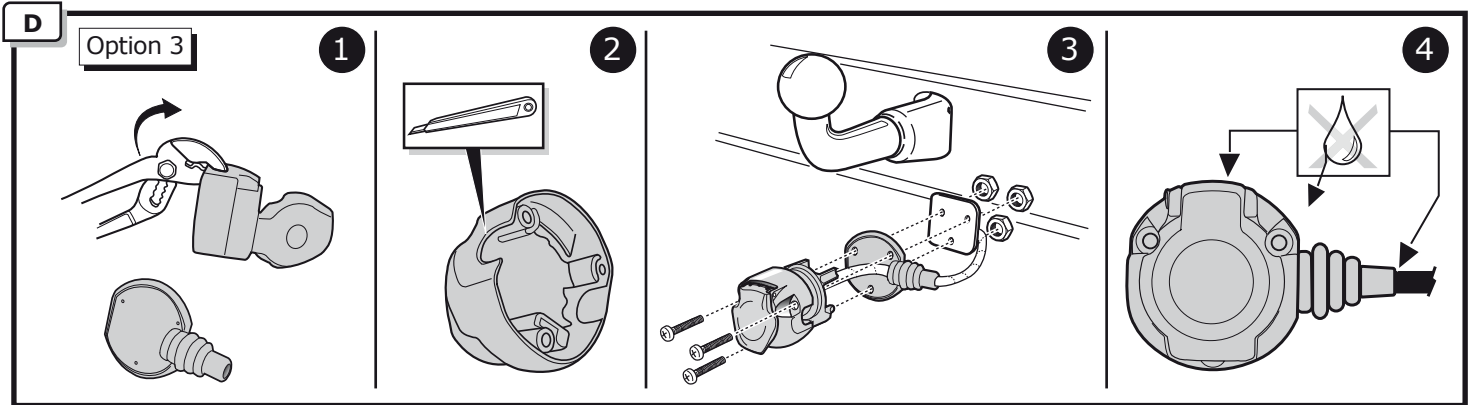
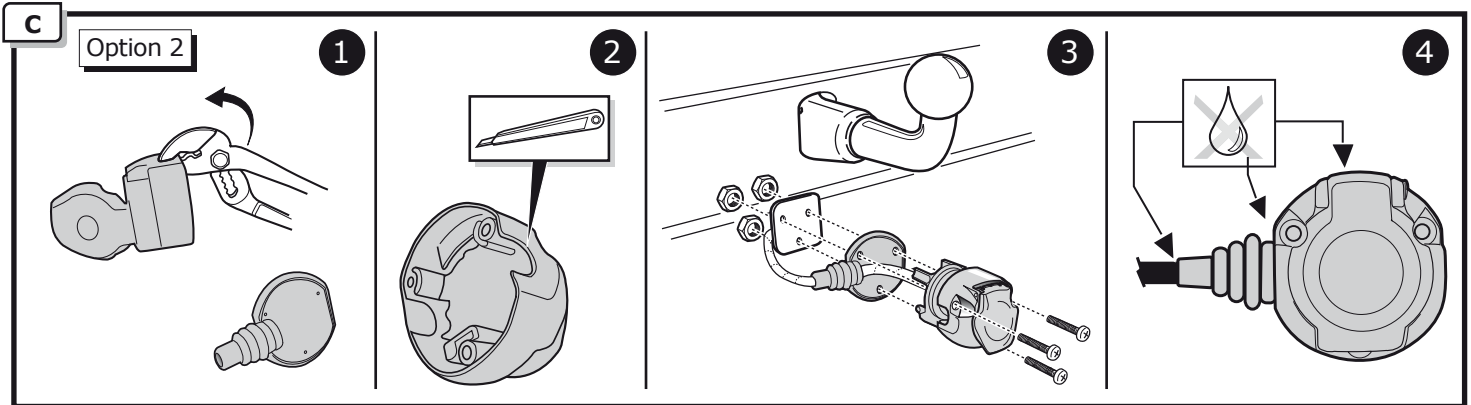
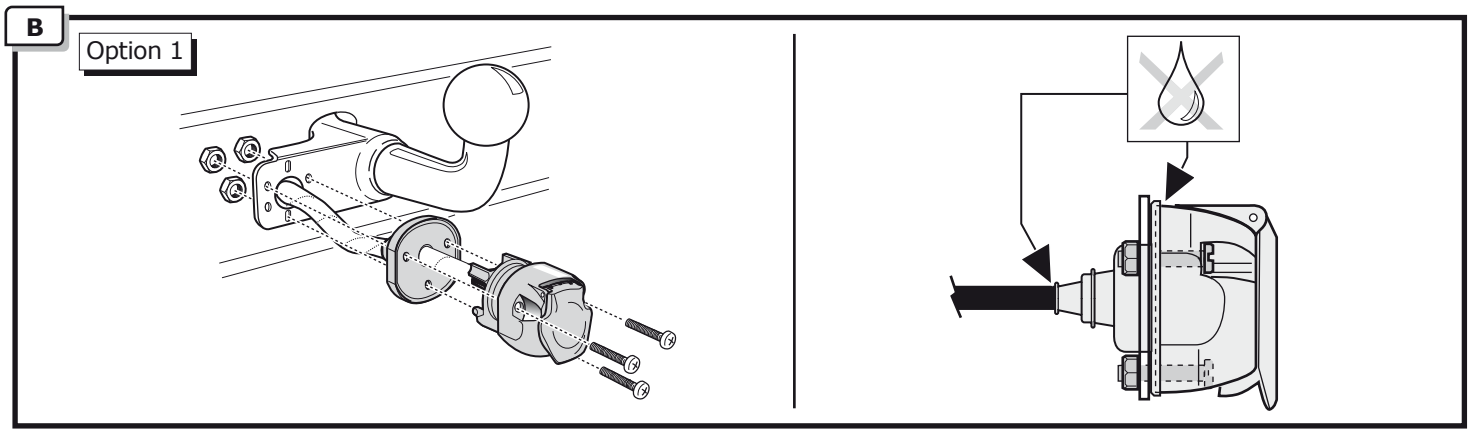


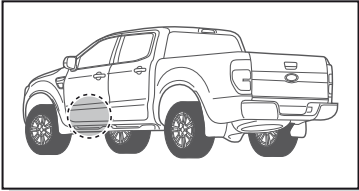
INFO

SOCKET CONNECTION

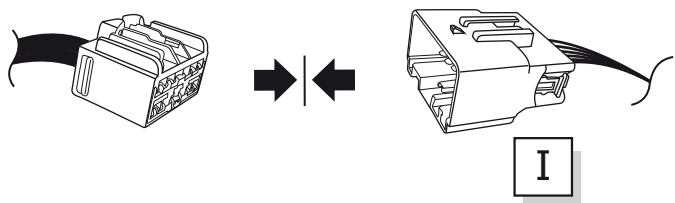
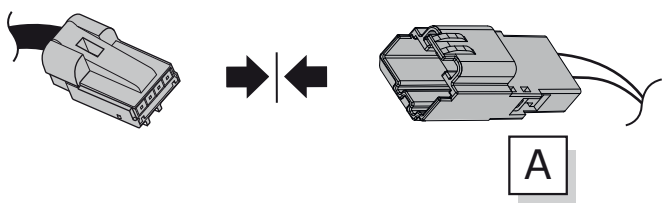
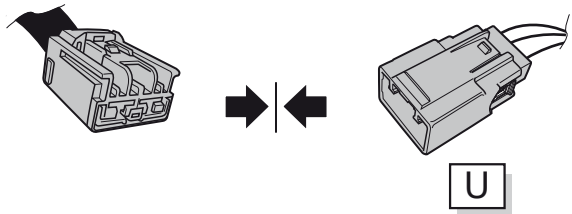
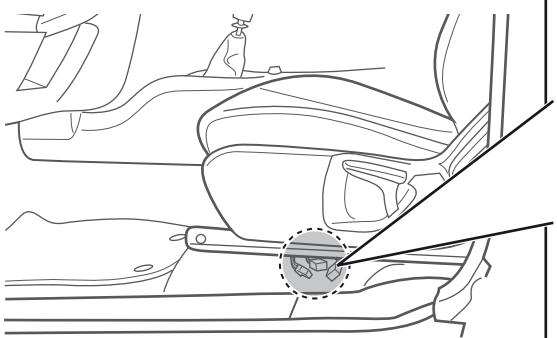
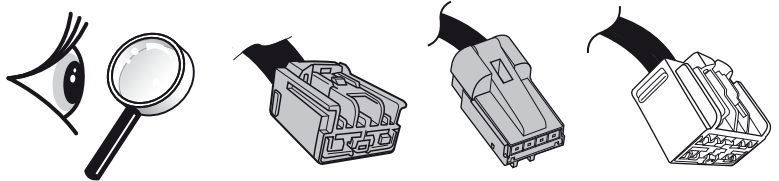


Page 13

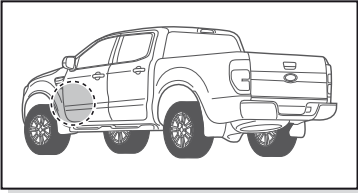




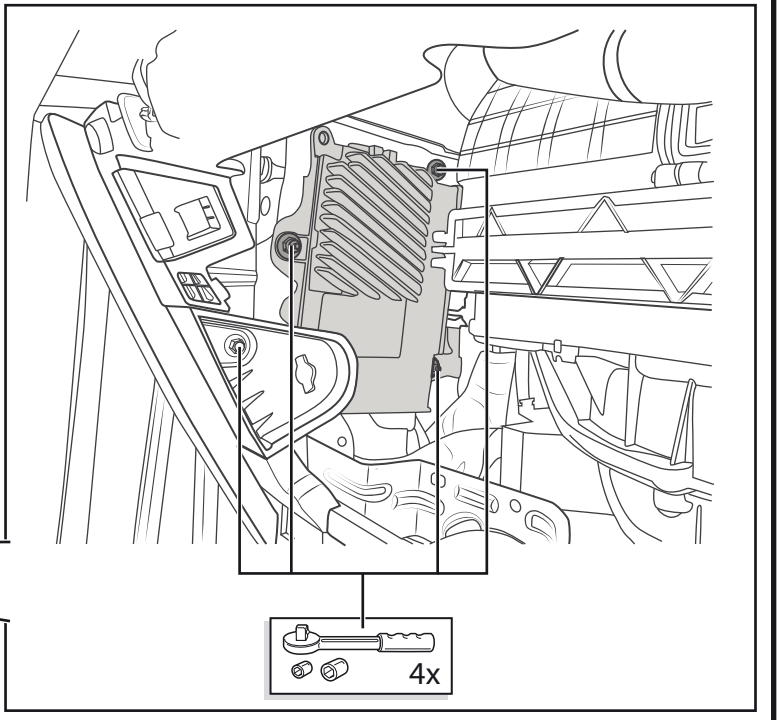
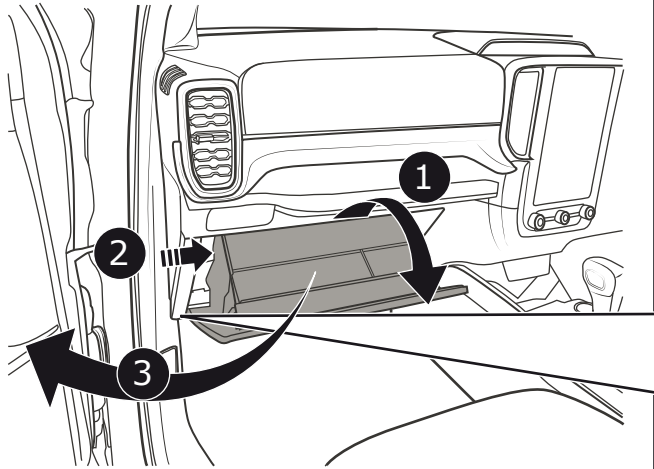
<< 2023



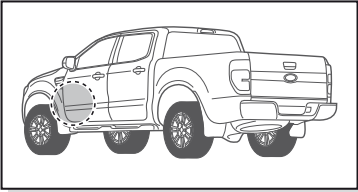
6



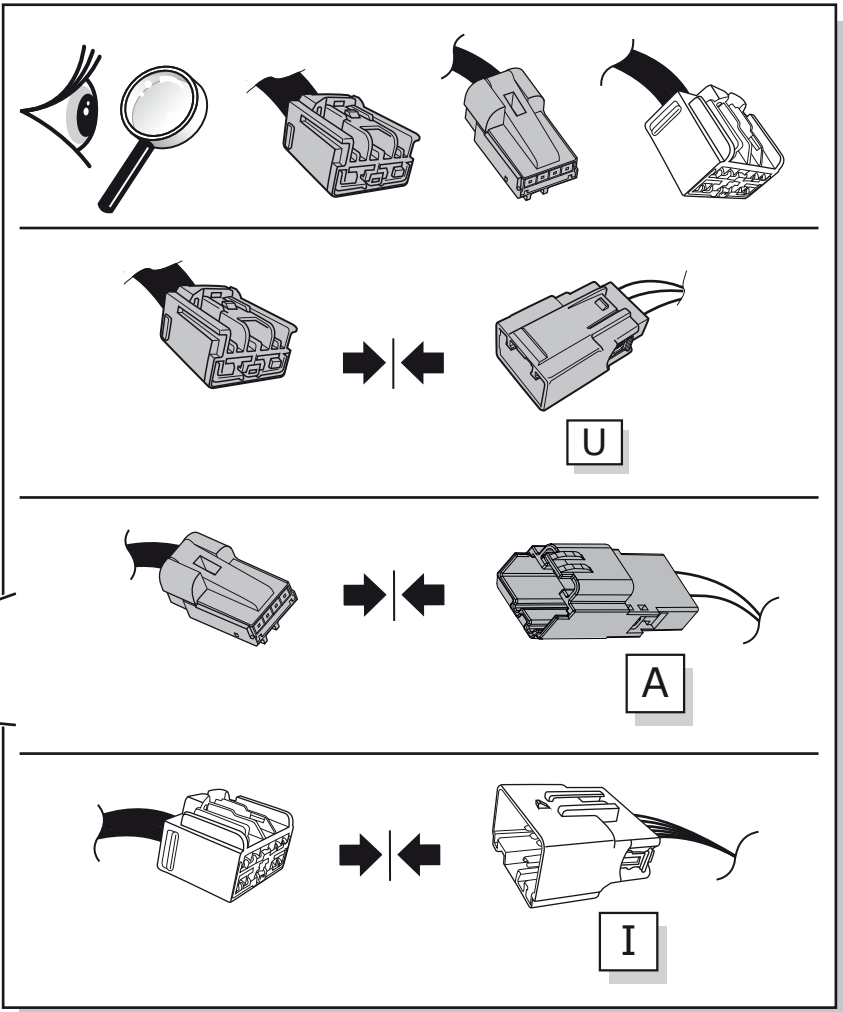
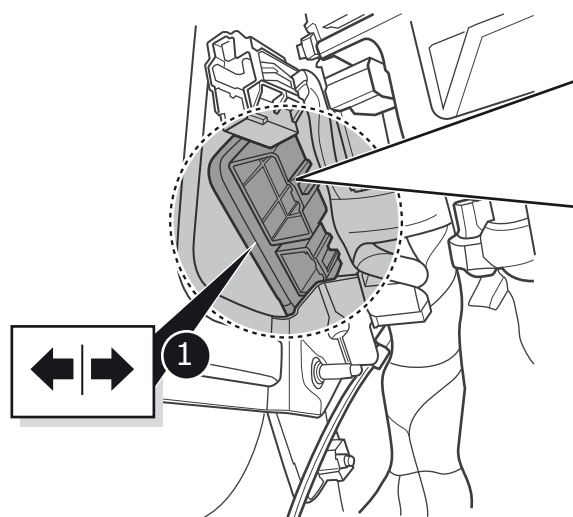
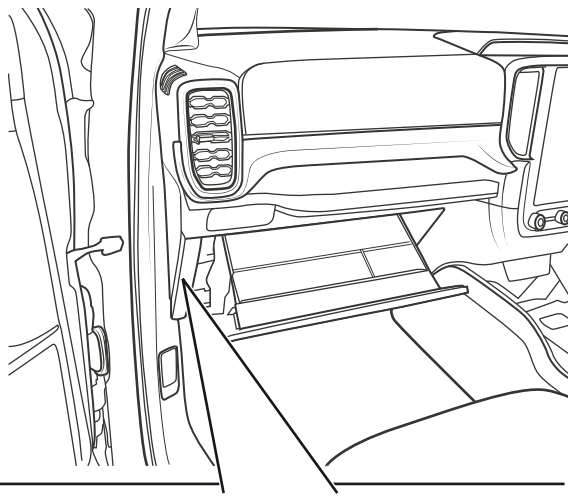
2023 >>



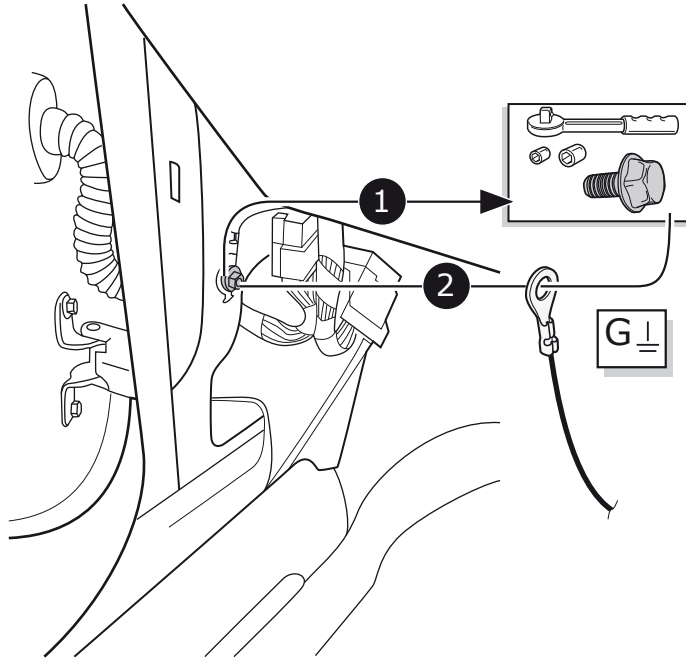
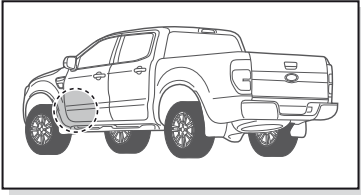
7



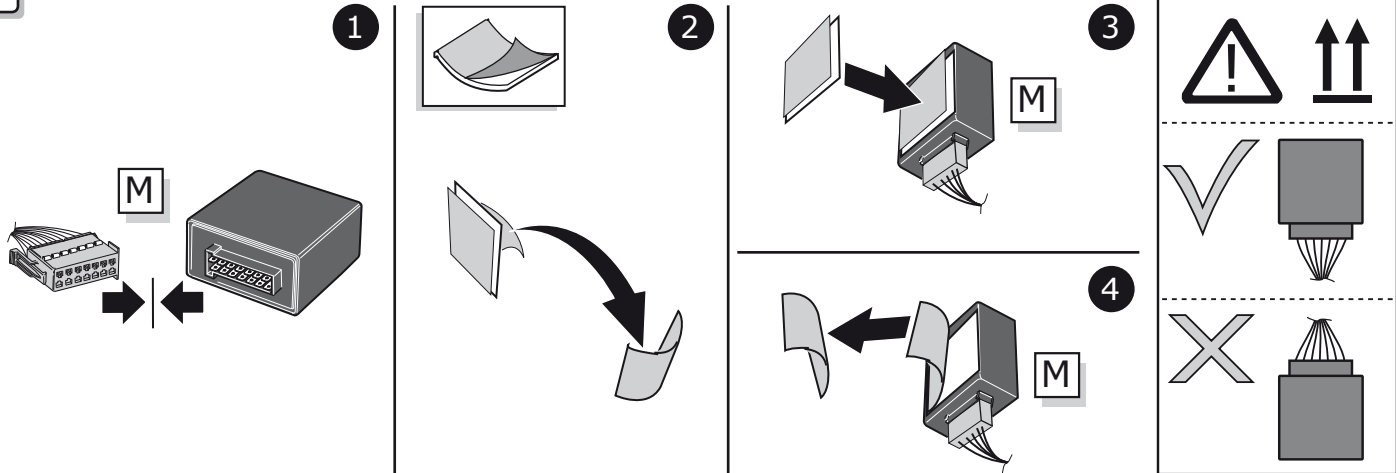
2023 >>



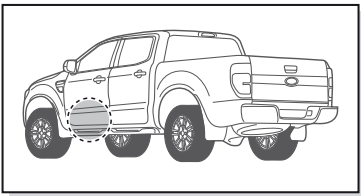
8



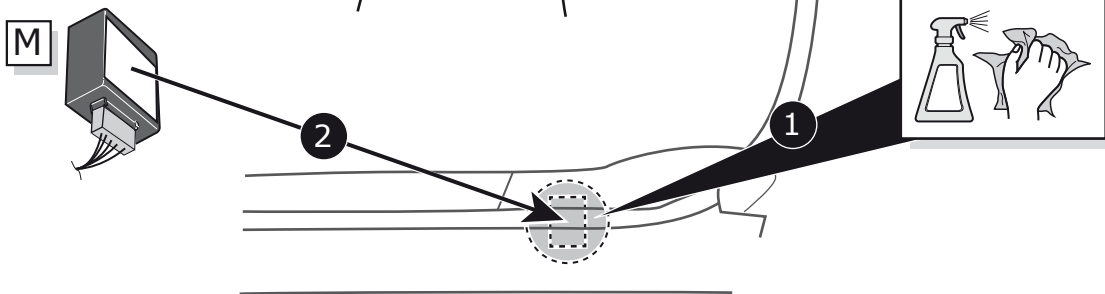
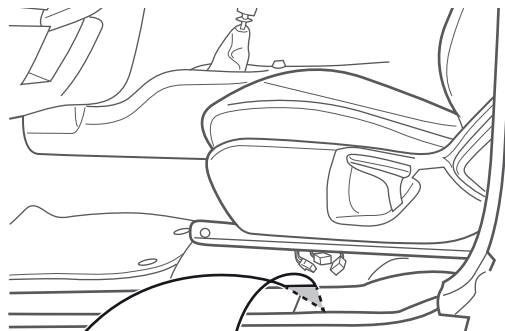
9

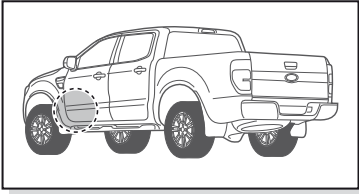


10

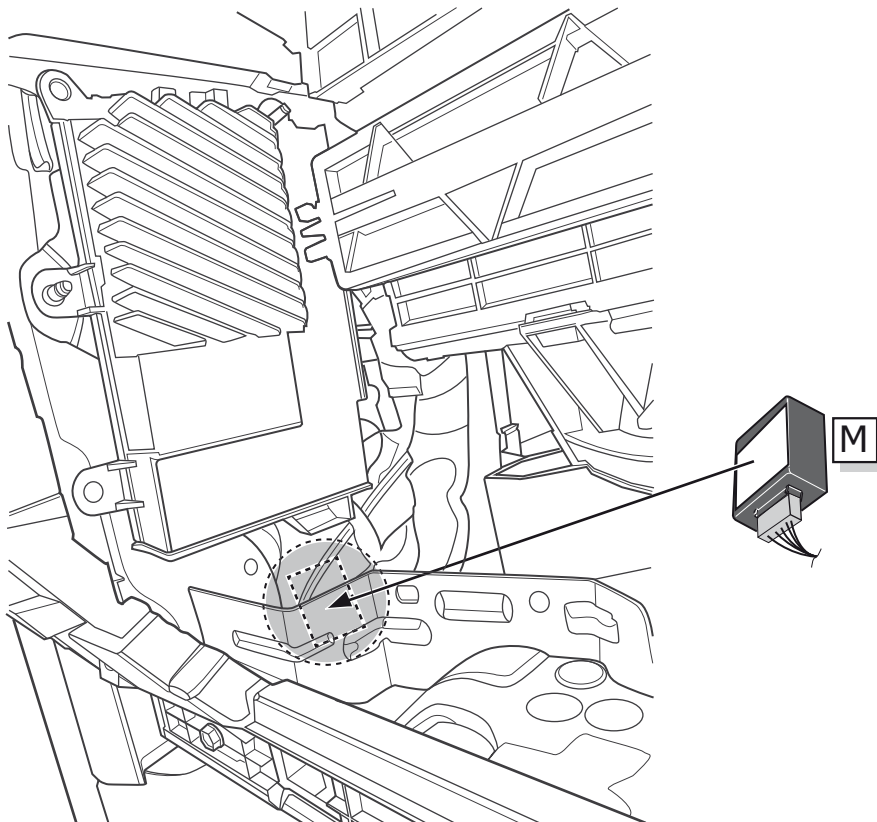
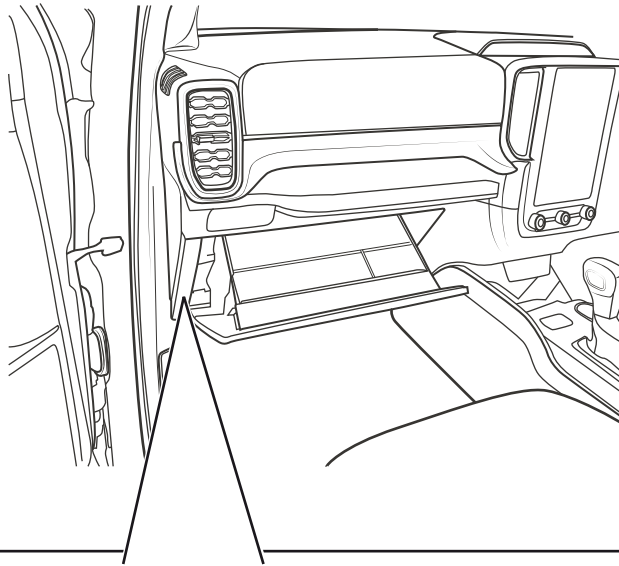


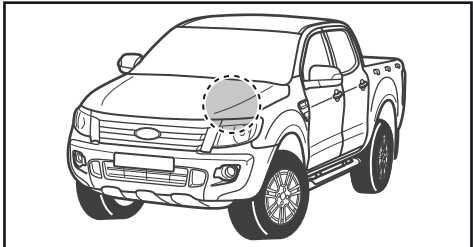
<< 2023



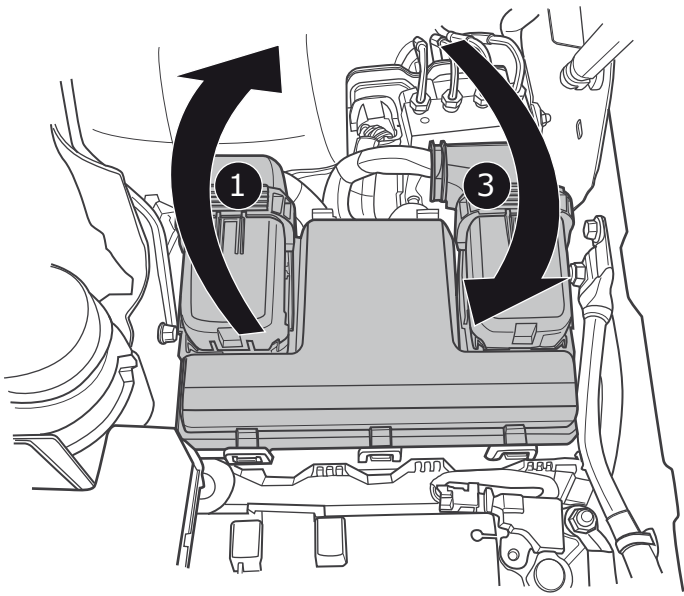


2023 >>





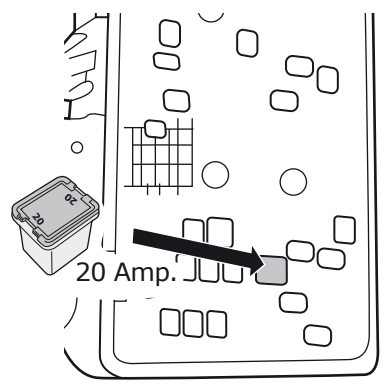
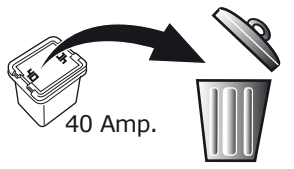
<< 2023



2

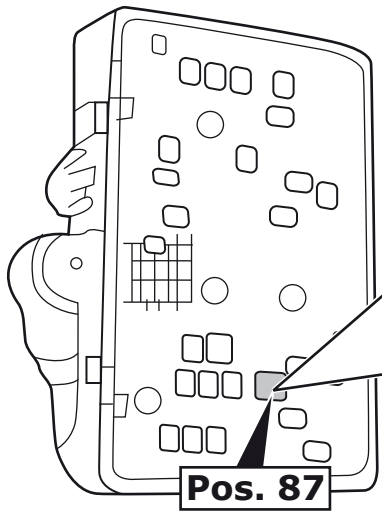
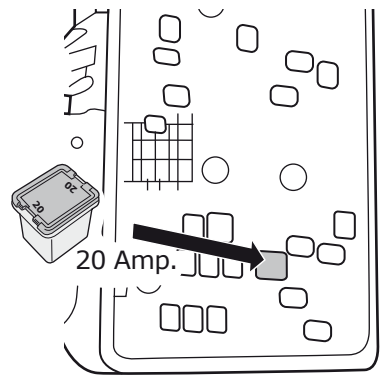
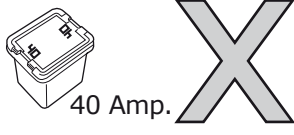
Option 1

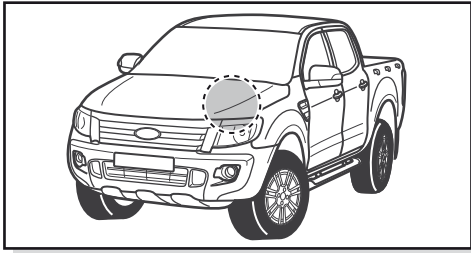
Pos. 87



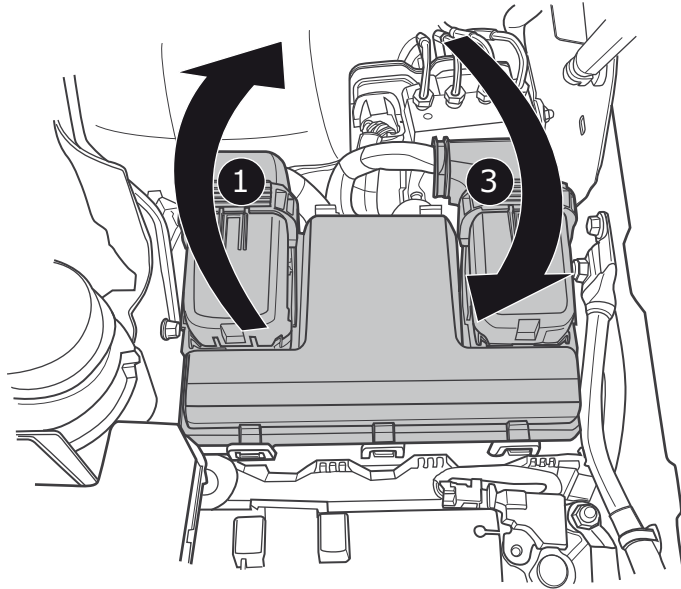
Option 2

Pos. 87

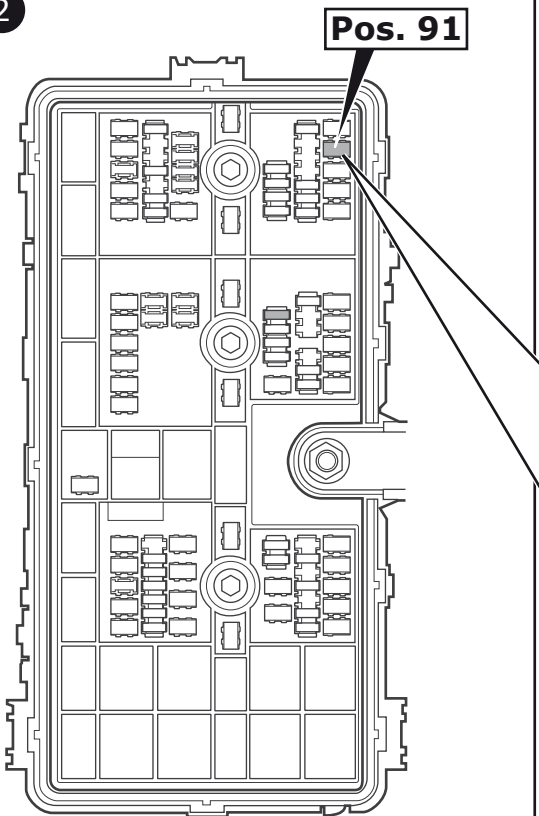




2023 >>

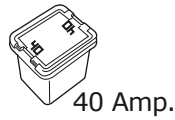


2

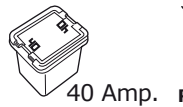


Option 1

Pos. 91



40 Amp.

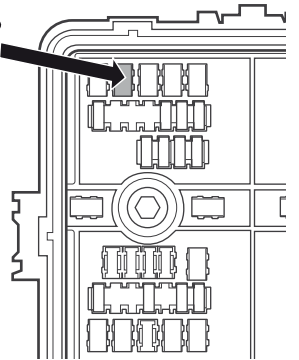
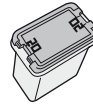


40 Amp.



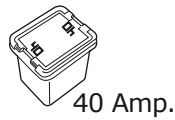
REUSEABLE

20 Amp.



Option 2

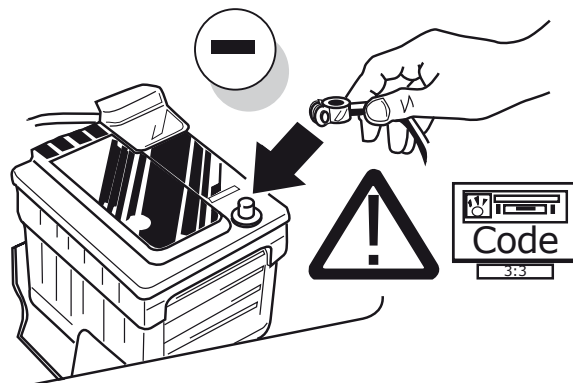
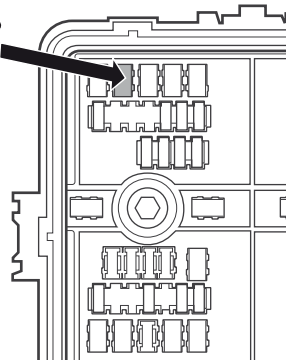
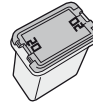
Pos. 91



40 Amp.



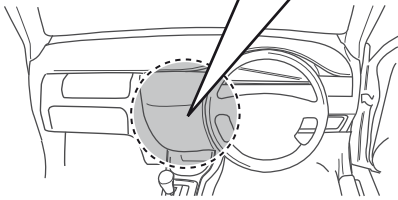
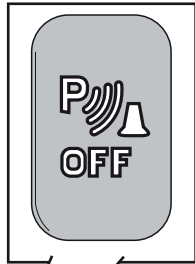
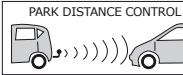
20 Amp.



15

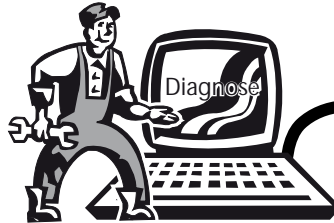
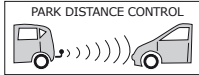
Option 1

Manual PDC



Option 2

Auto PDC



16

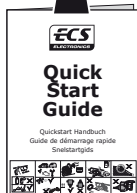
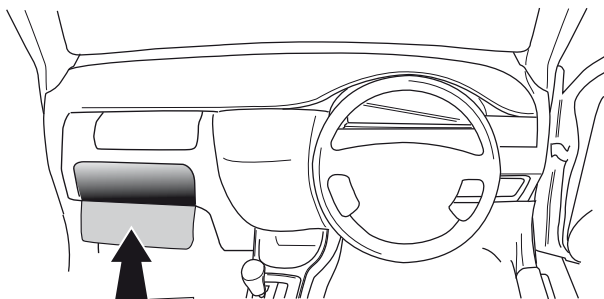


TEST ALL THE CIRCUITS WITH A TEST DEVICE WITH THE CORRECT POWER LOAD FOR EACH FUNCTION. A TEST DEVICE WITH LED'S CANNOT BE USED FOR THIS PURPOSE.

INFO

REINSTALL TRIM.

17

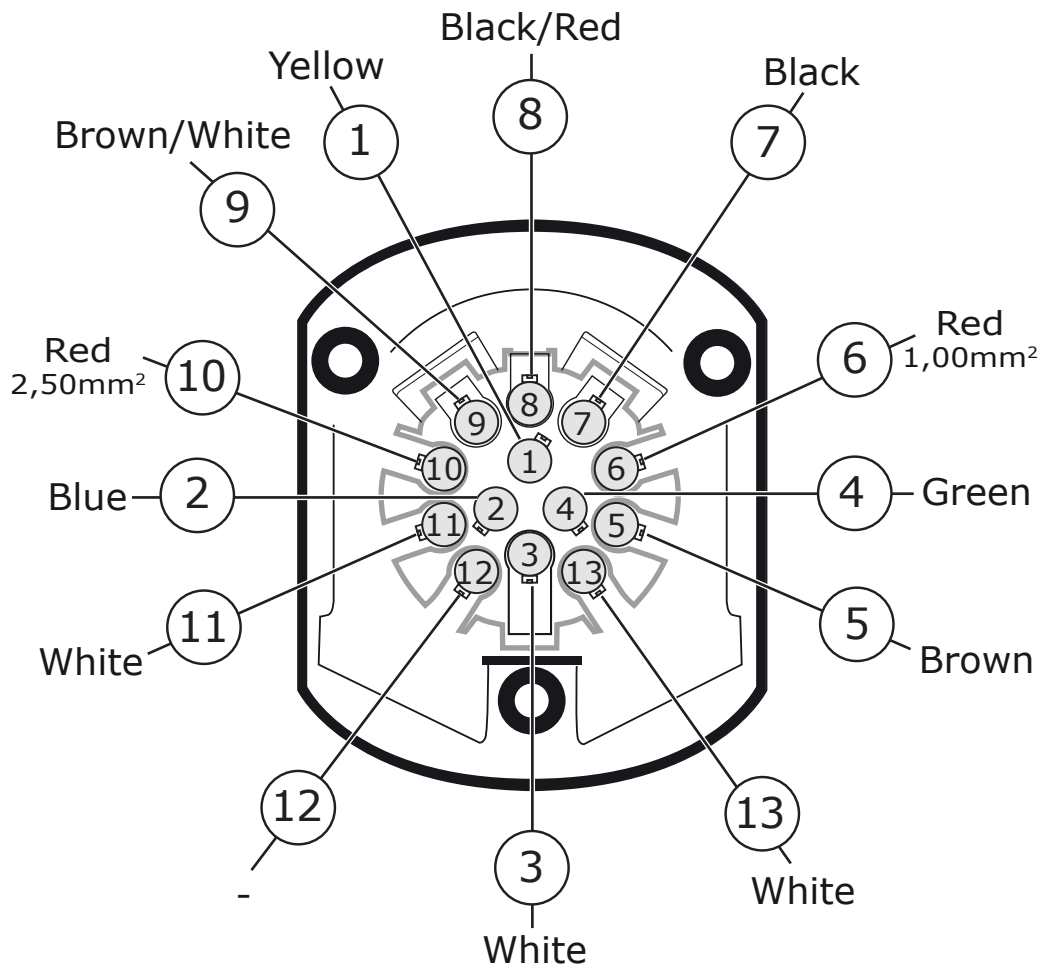
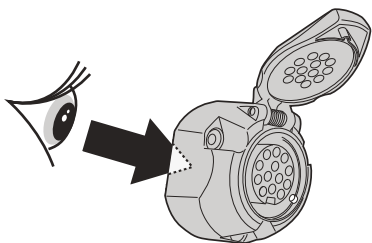


TECHNICAL SUPPORT

CALL 07440 202 052

ECS ELECTRONICS MONDAY TO FRIDAY
08.00 - 11.00 am
12.00 - 05.00 pm
ukts@ecs-electronics.com
www.ecs-electronicsuk.co.uk

SOCKET CONNECTION



SOCKET CONNECTION

DIN/ISO 11446													
	1/L	2	3/31	4/R	5/58-R	6/54	7/58-L	8	9	10	11	12	13
P _{max}	21W	2x21W		21W	52W	3x21W	52W	2x21W	180W/15Amp	180W/15Amp			
Colour	Yellow	Blue	White	Green	Brown	Red 1,00 mm ²	Black	Black/ Red	Brown/ White	Red 2,50 mm ²	White	-	White