



## OPEL

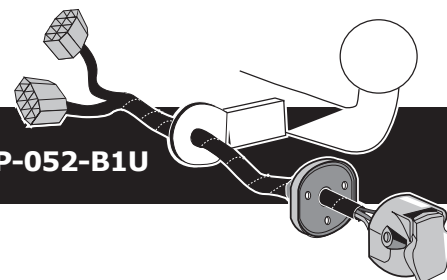
Meriva B 04/2010-  
Zafira Tourer 2011-  
Mokka 2013-  
Mokka X 09/2016-  
Cascada 2013-

## SAAB

9-5 06/2010-

## CHEVROLET

Orlando J309 02/2011-  
Trax 2013-

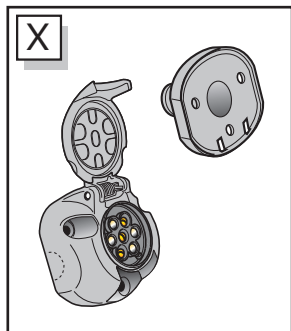
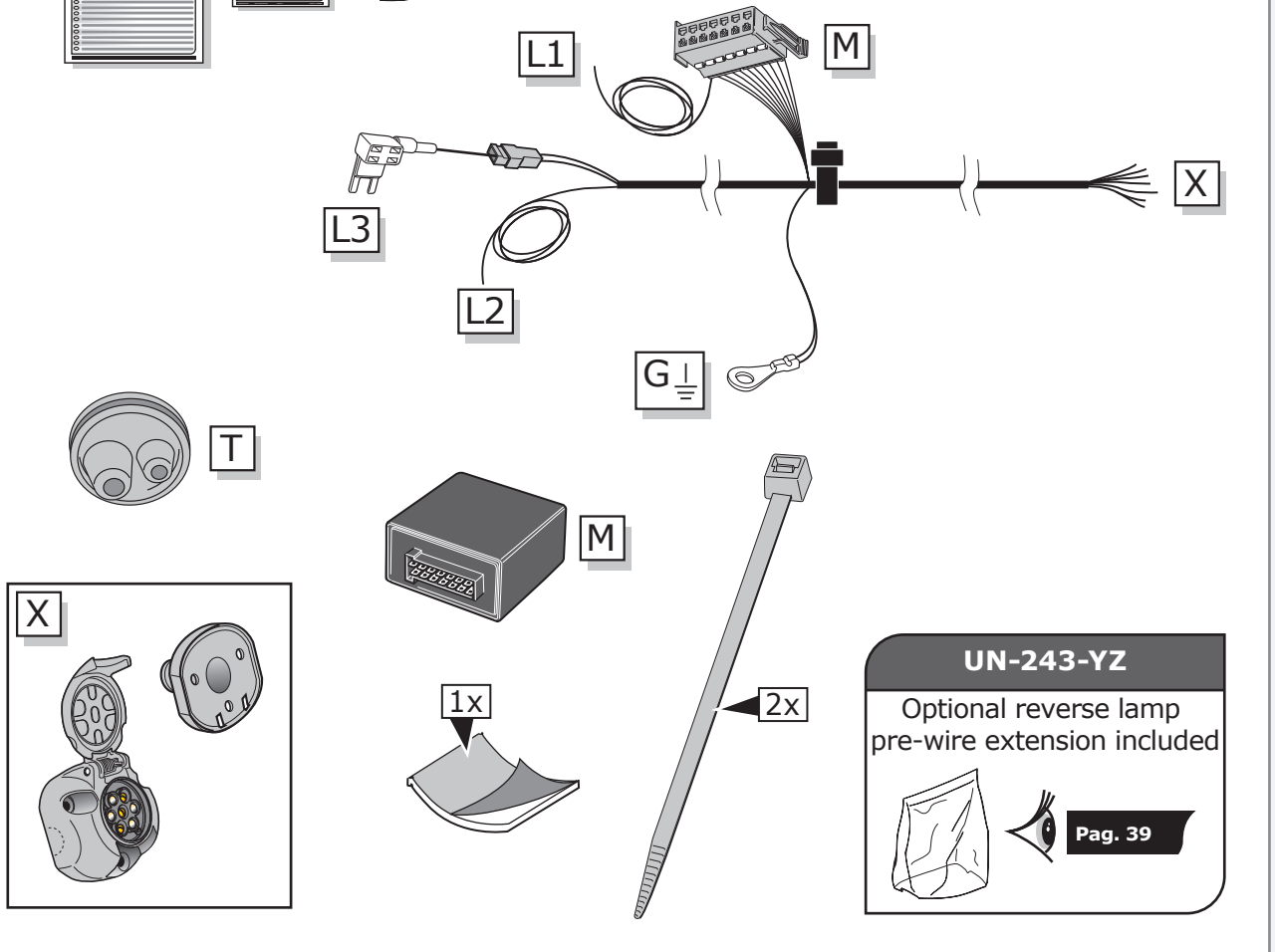
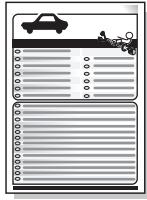
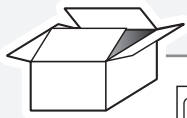


Partnr.: OP-052-B1U

- Fitting instructions electric wiring kit tow bar with 12-N socket up to DIN/ISO Norm 1724.
- We would expressly point out that assembly not carried out properly by a competent installer will result in cancellation of any right to damage compensation, in particular those arising by virtue of the product liability act.
- Contents of these kits and their fitting manuals are subject to alteration without notice, please ensure that these instructions are read and fully understood before commencing installation.
- Do not overload circuits; the maximum loads per connection are detailed in this manual.
- Attention! Before Installation, please read this manual carefully and inform your customer to consult the vehicle owners manual to check for any vehicle modifications required before towing.
- In the event of functional problems, troubleshooting must be limited to about 0.5 hours, contact the technical support:  
[t.skinner@ecs-electronics.com](mailto:t.skinner@ecs-electronics.com) / 07440 202 052.

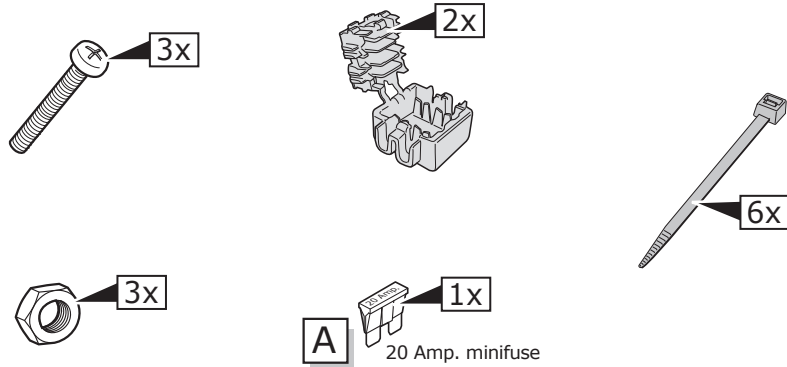


# Part list



**UN-243-YZ**  
 Optional reverse lamp  
 pre-wire extension included

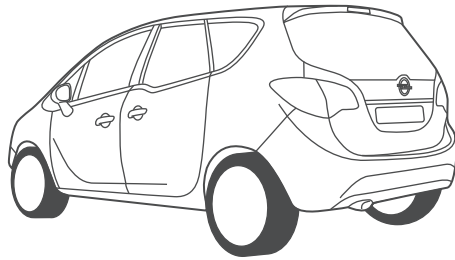
Pag. 39



**Meriva B**

Pag. 4

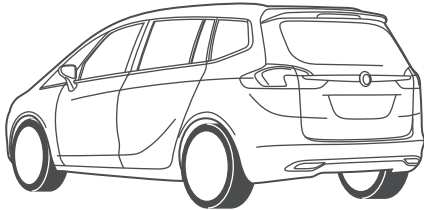
-  
Pag. 7



**Zafira**

Pag. 8

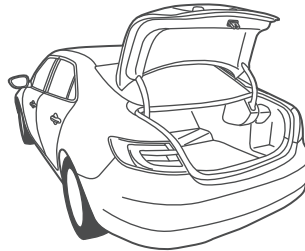
-  
Pag. 11



**Saab 9-5**

Pag. 12

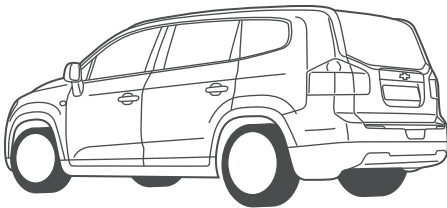
-  
Pag. 15



**Orlando**

Pag. 16

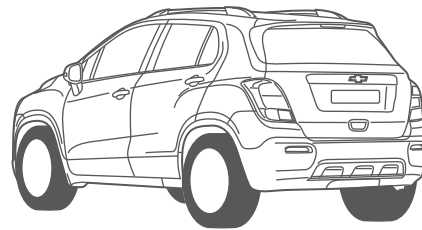
-  
Pag. 19



**Trax**

Pag. 20

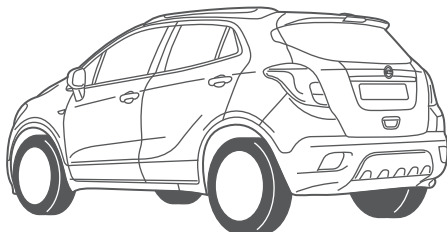
-  
Pag. 23



**Mokka**

Pag. 24

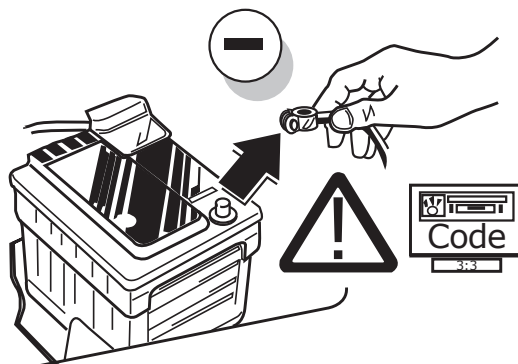
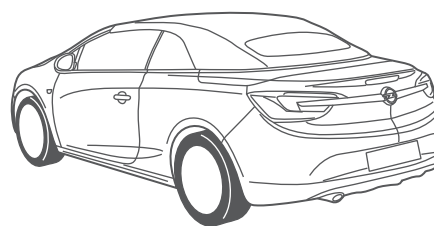
-  
Pag. 30



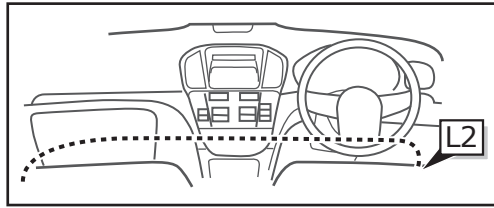
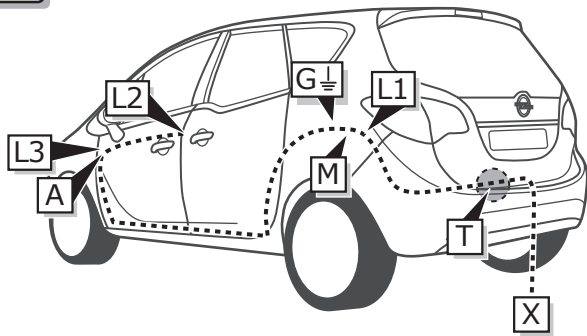
**Cascada**

Pag. 31

-  
Pag. 34



INFO

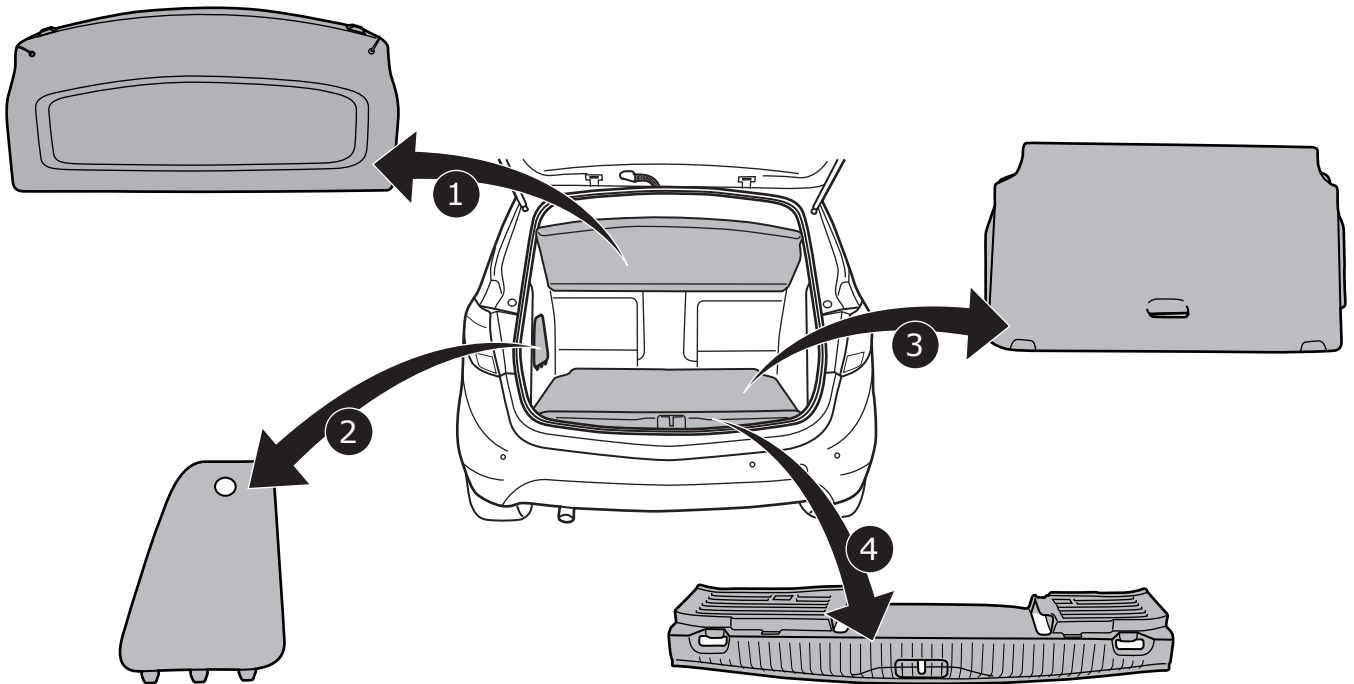


Meriva B

Pag. 4

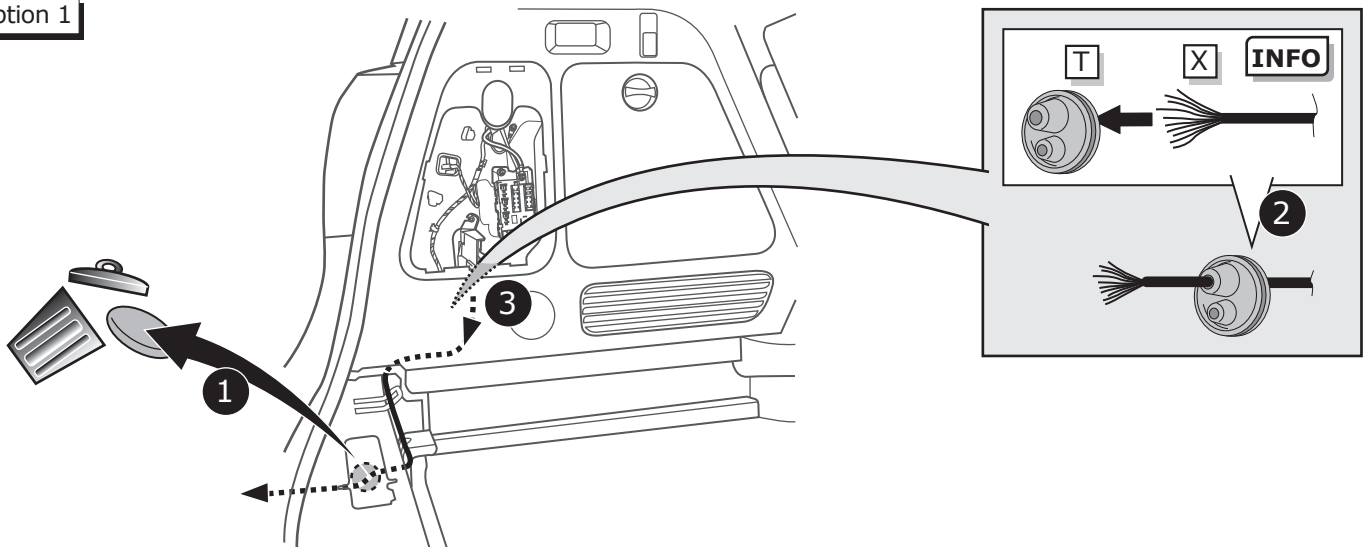
-  
Pag. 7

1



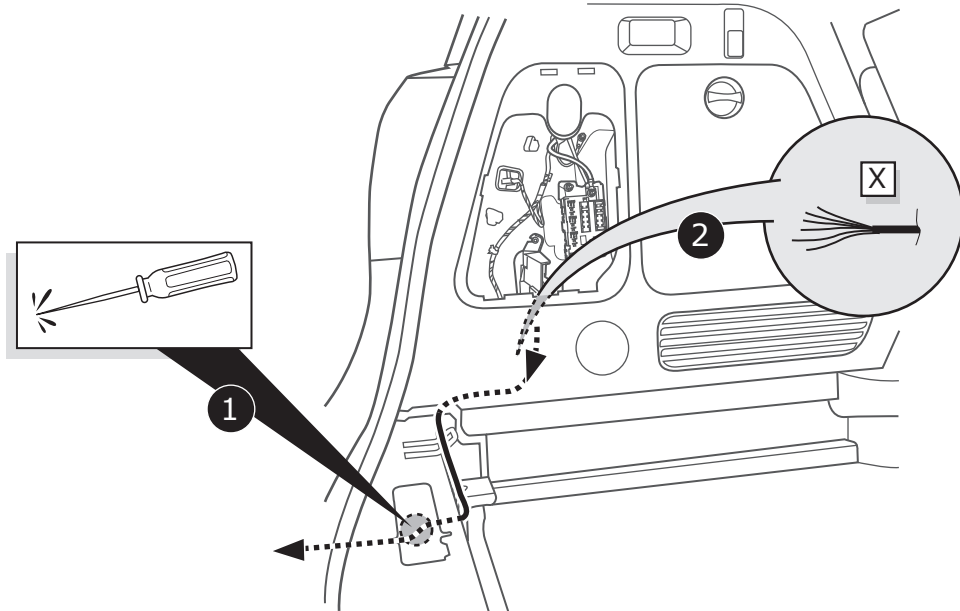
2

Option 1



3

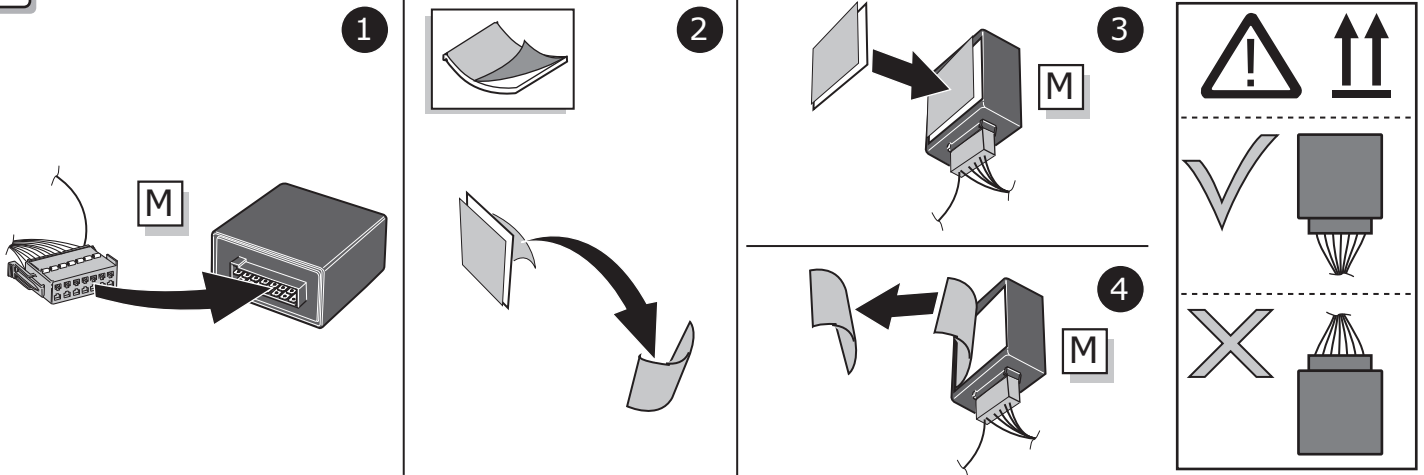
Option 2



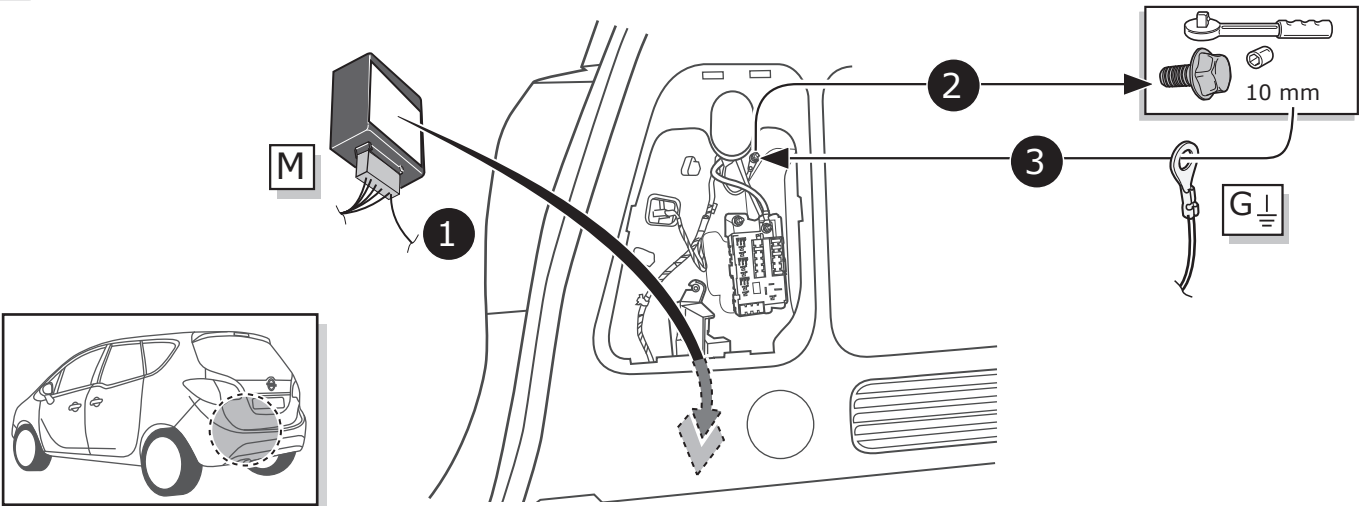
4



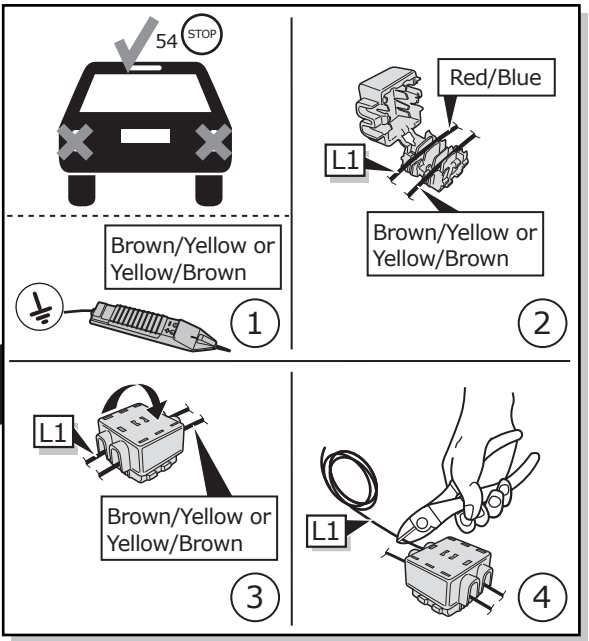
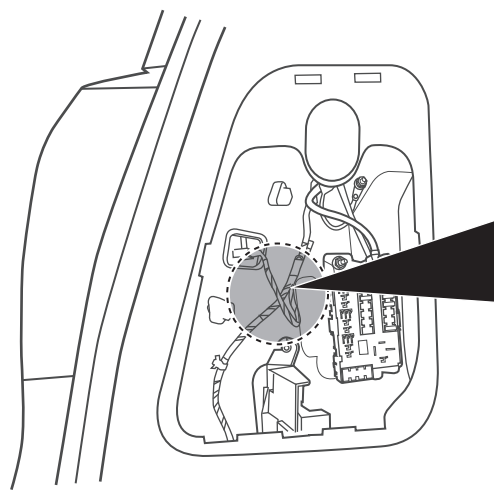
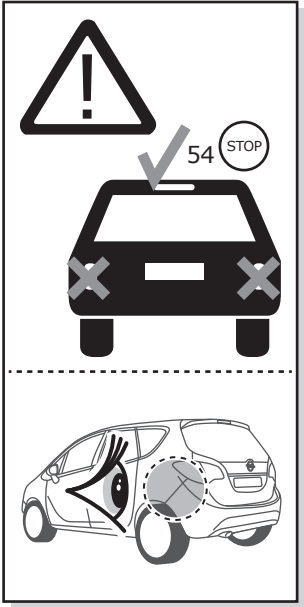
5



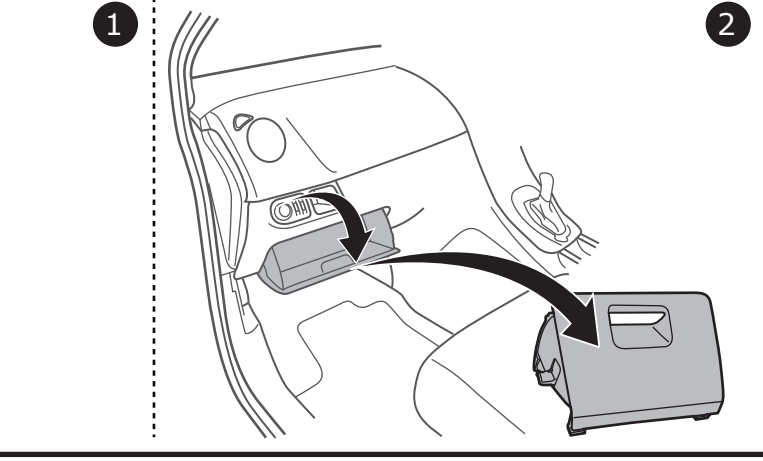
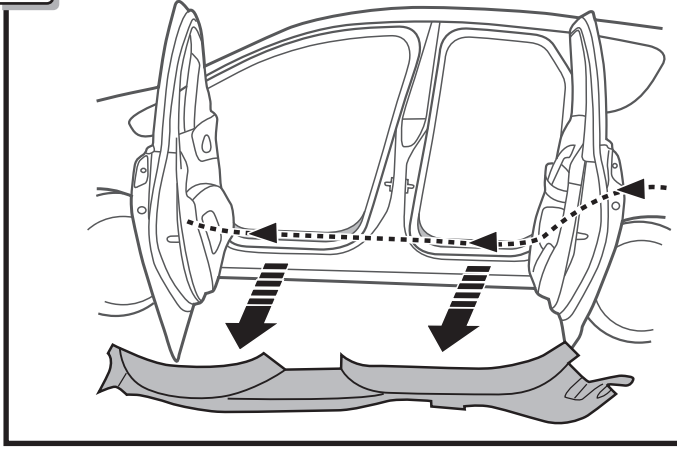
6



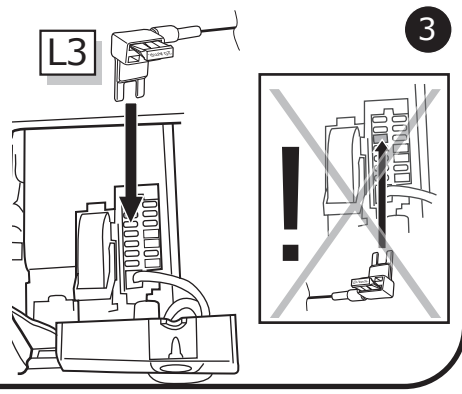
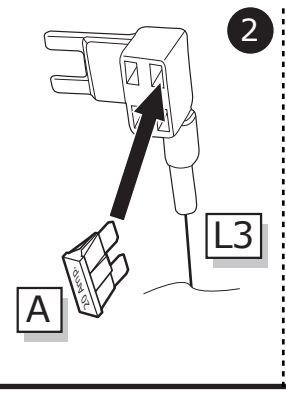
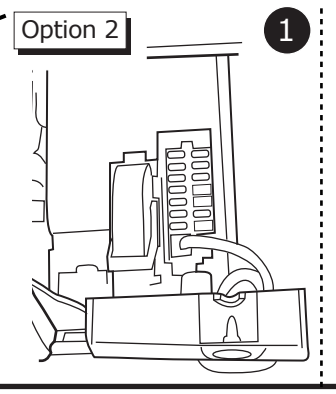
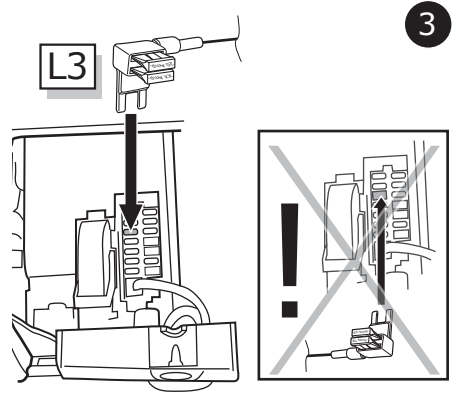
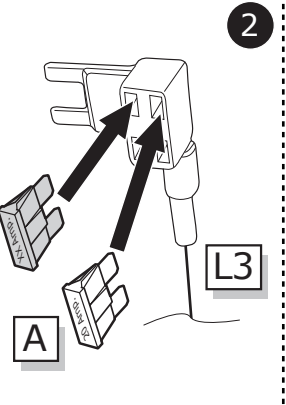
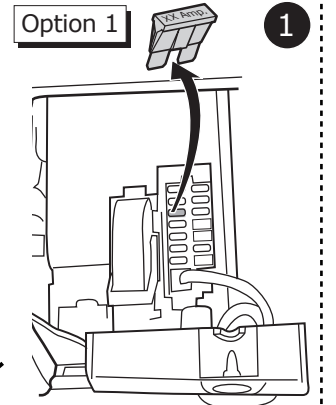
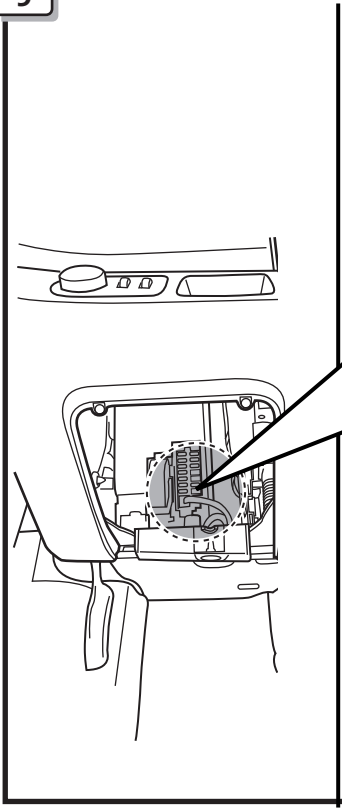
7



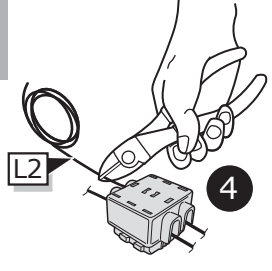
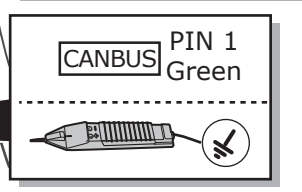
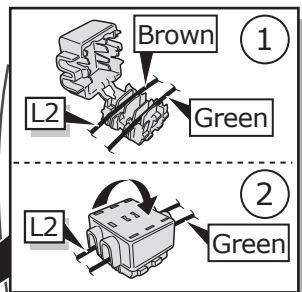
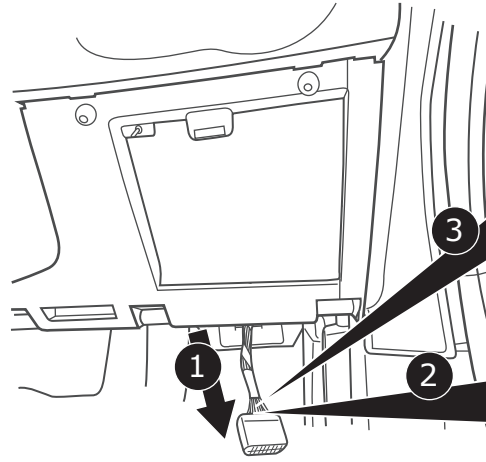
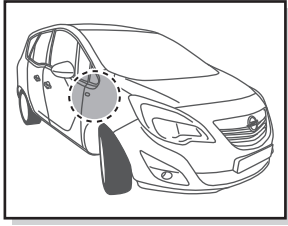
8



9



10

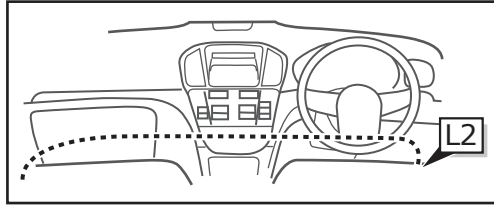
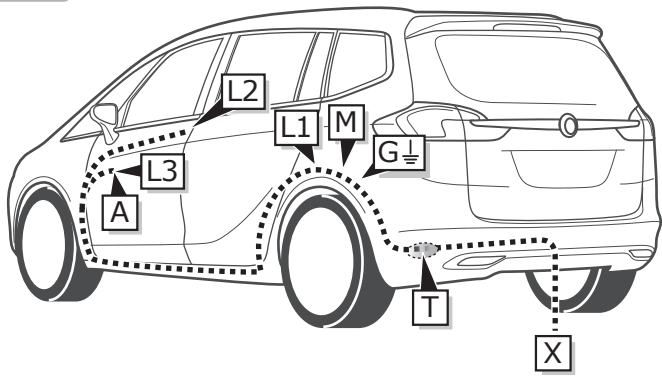


11



Pag. 36

INFO

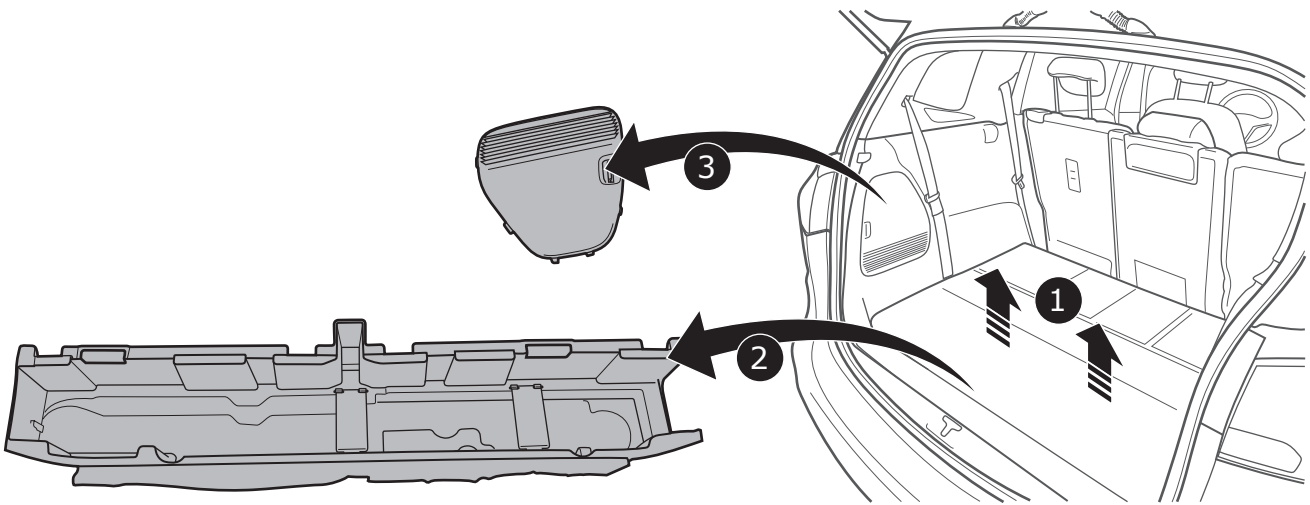


Zafira

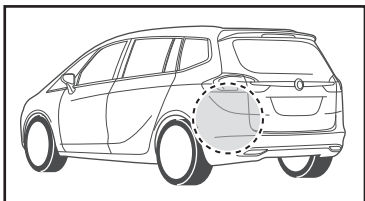
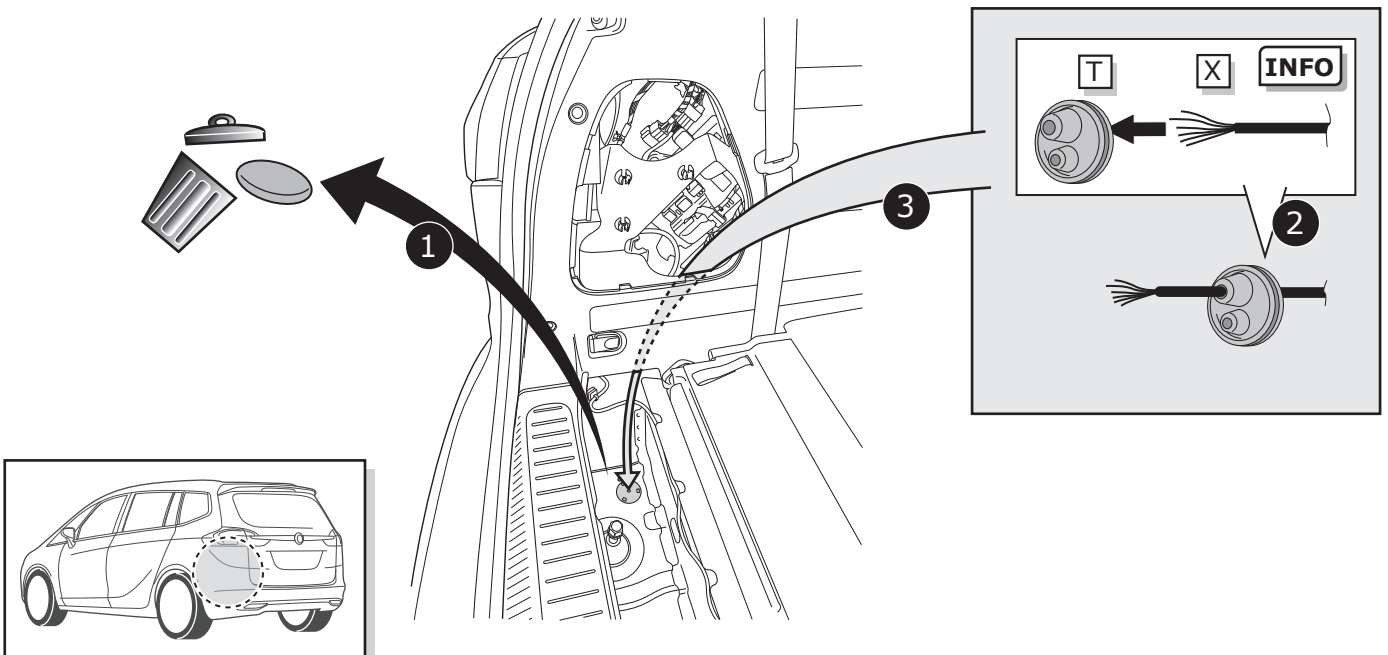
Pag. 8

Pag. 11

1



2





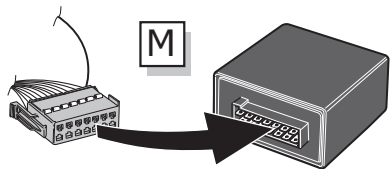
3



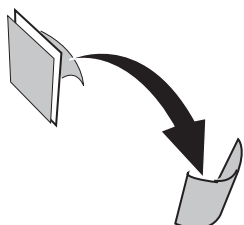
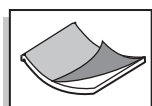
Pag. 35

4

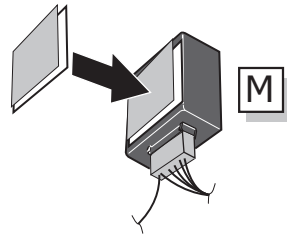
1



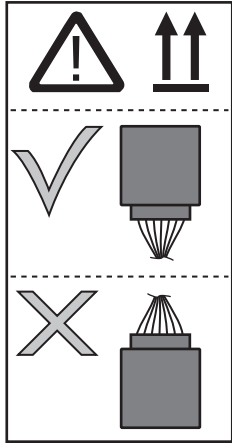
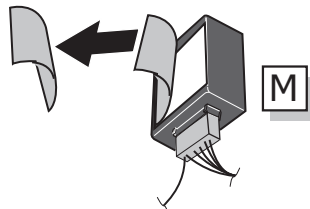
2



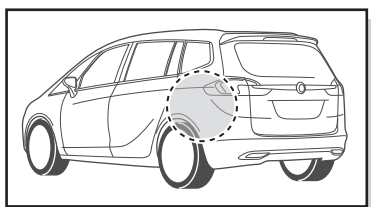
3



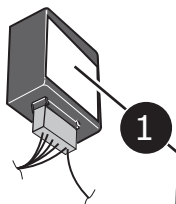
4



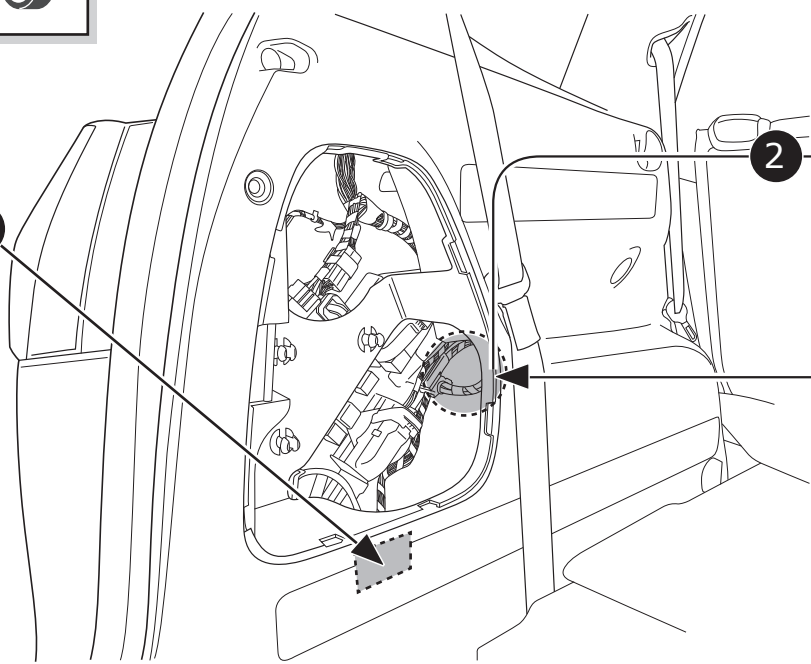
5



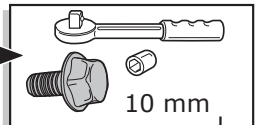
M



1



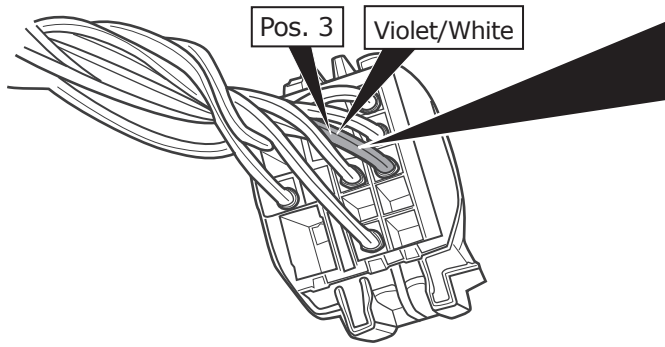
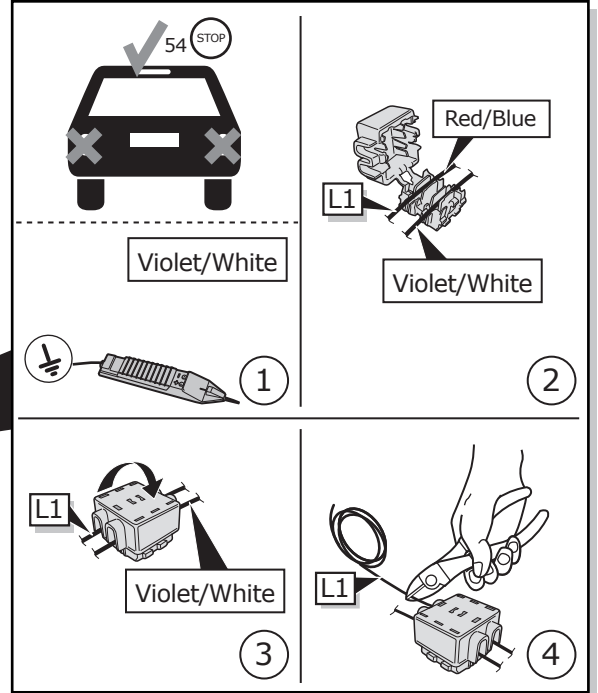
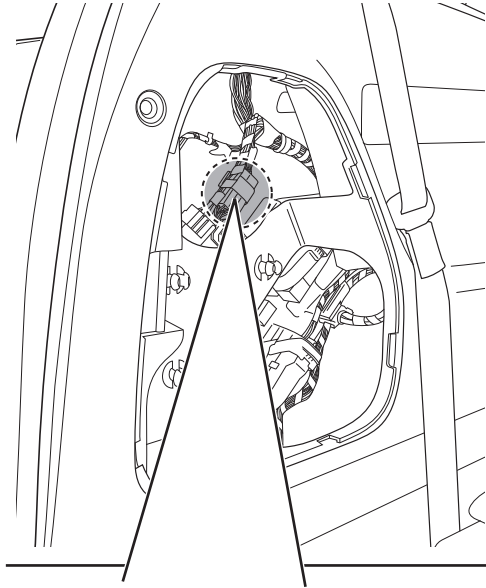
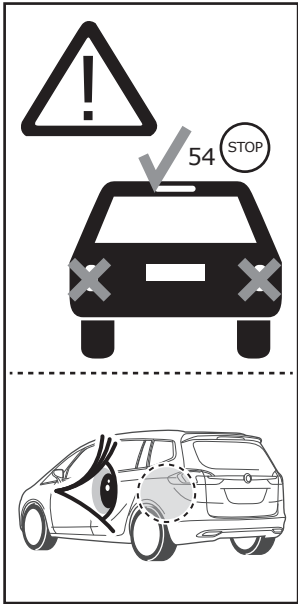
2



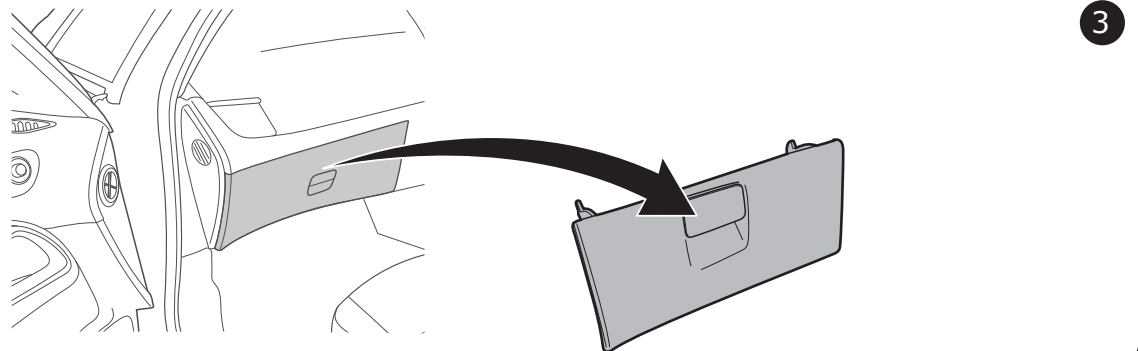
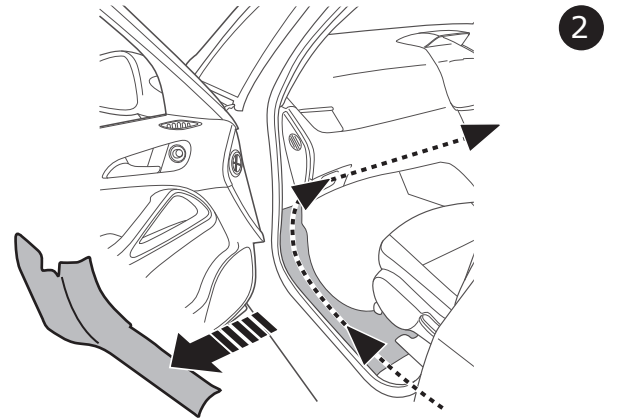
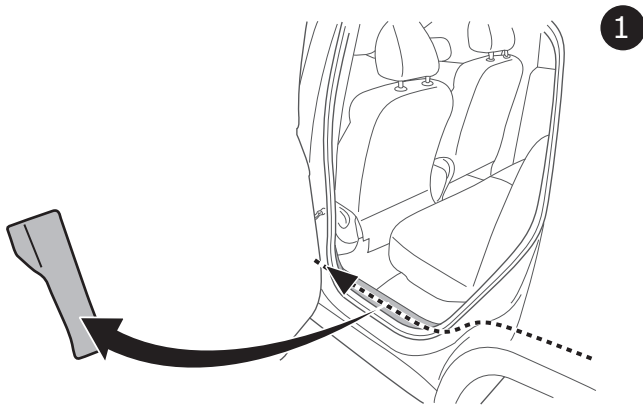
3



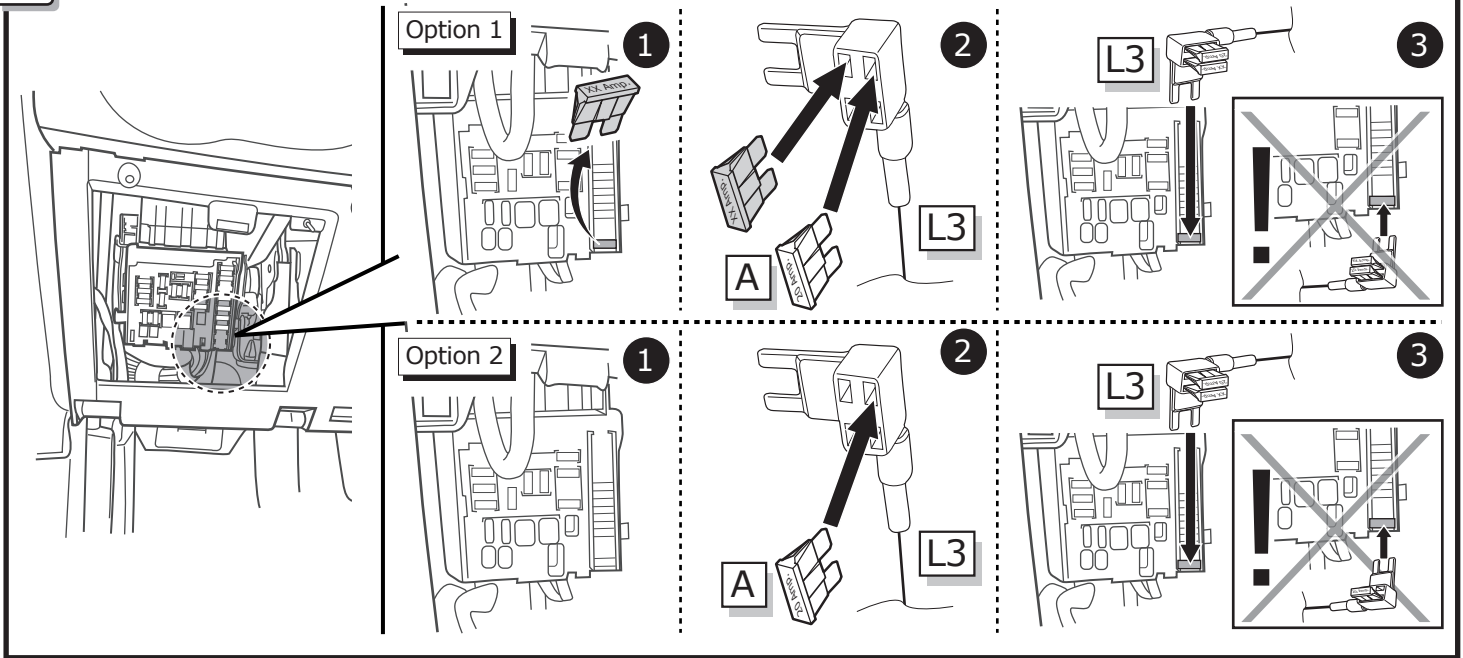
6



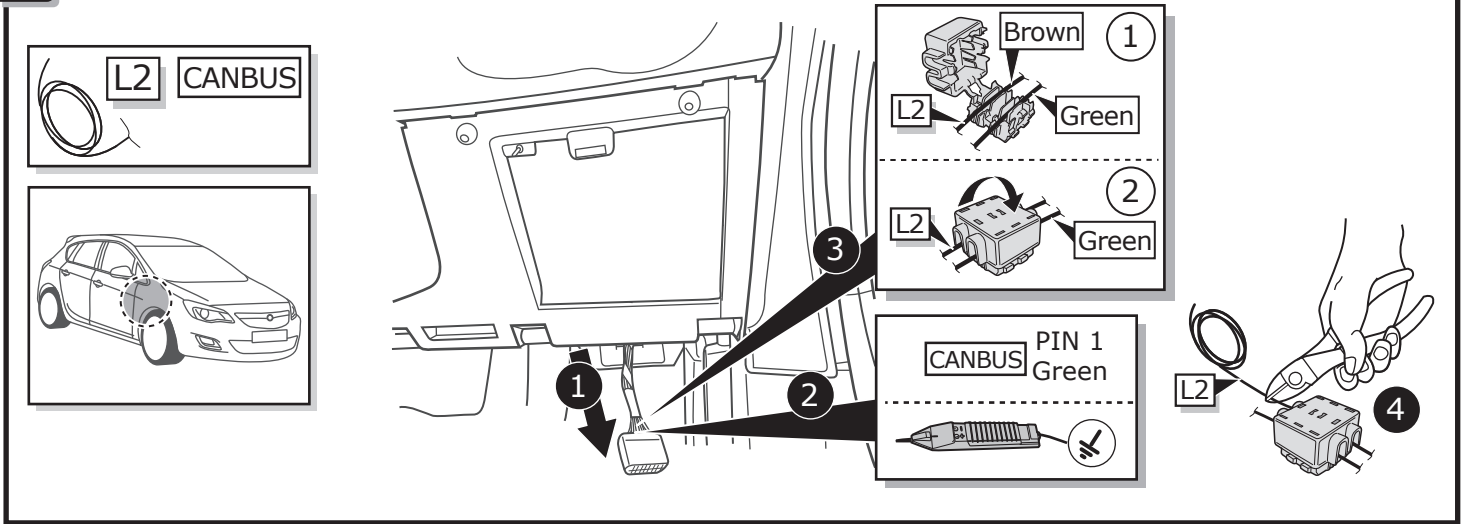
7



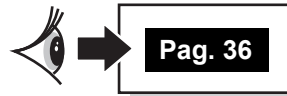
8



9



10

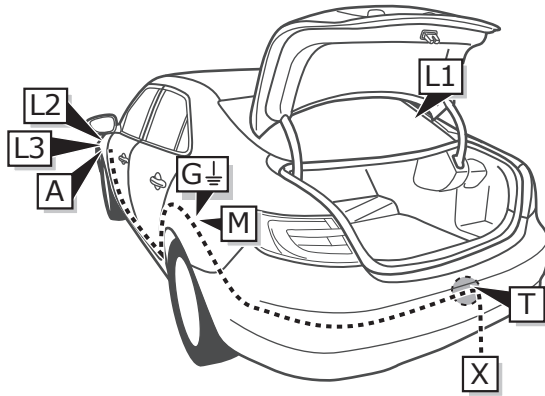


INFO

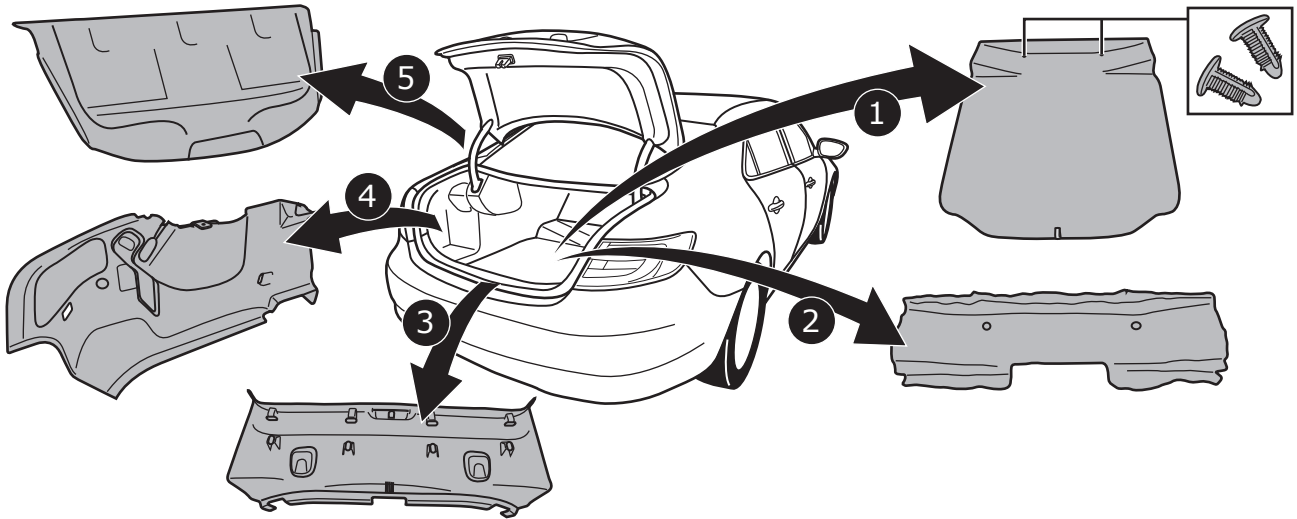
Saab 9-5

Pag. 12

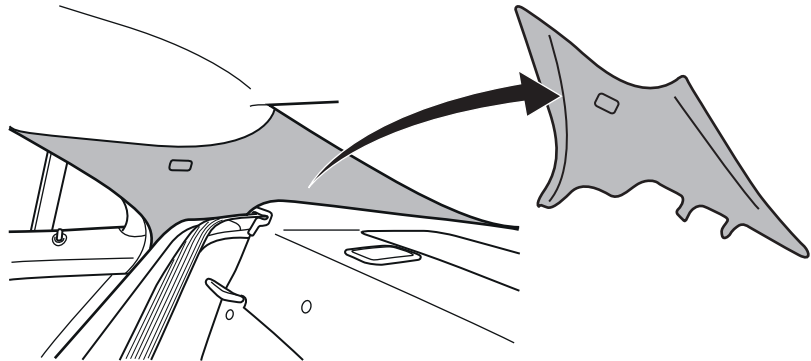
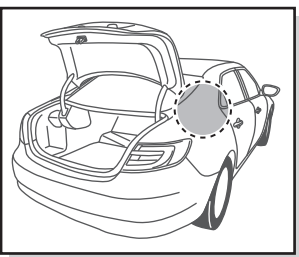
Pag. 15



1

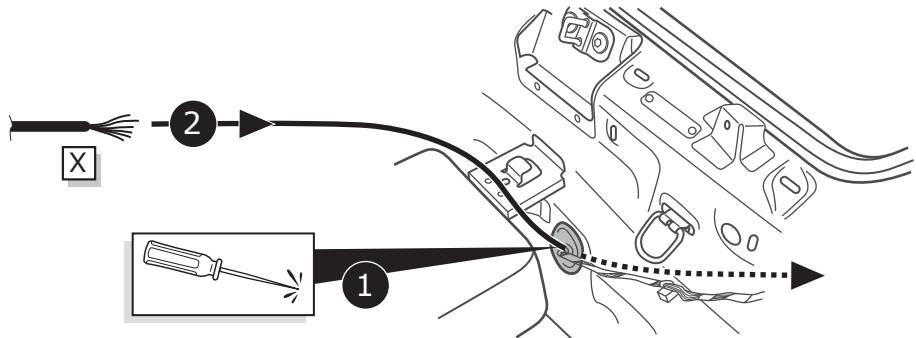
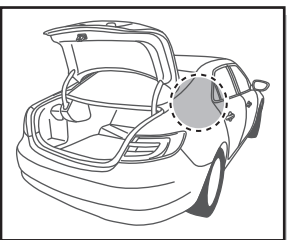


2



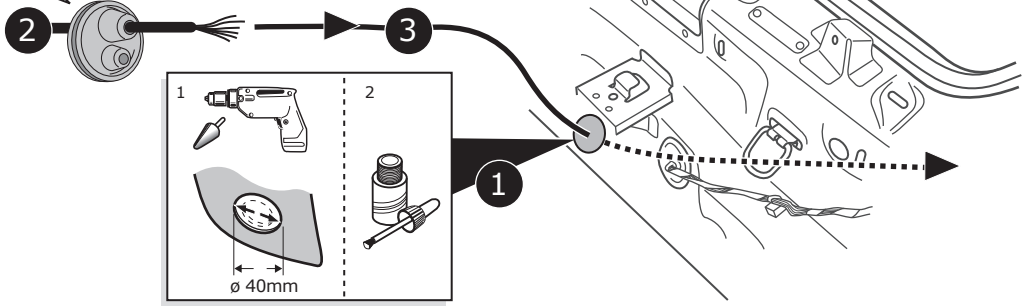
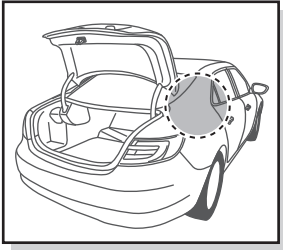
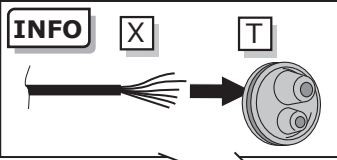
3

Option 1



4

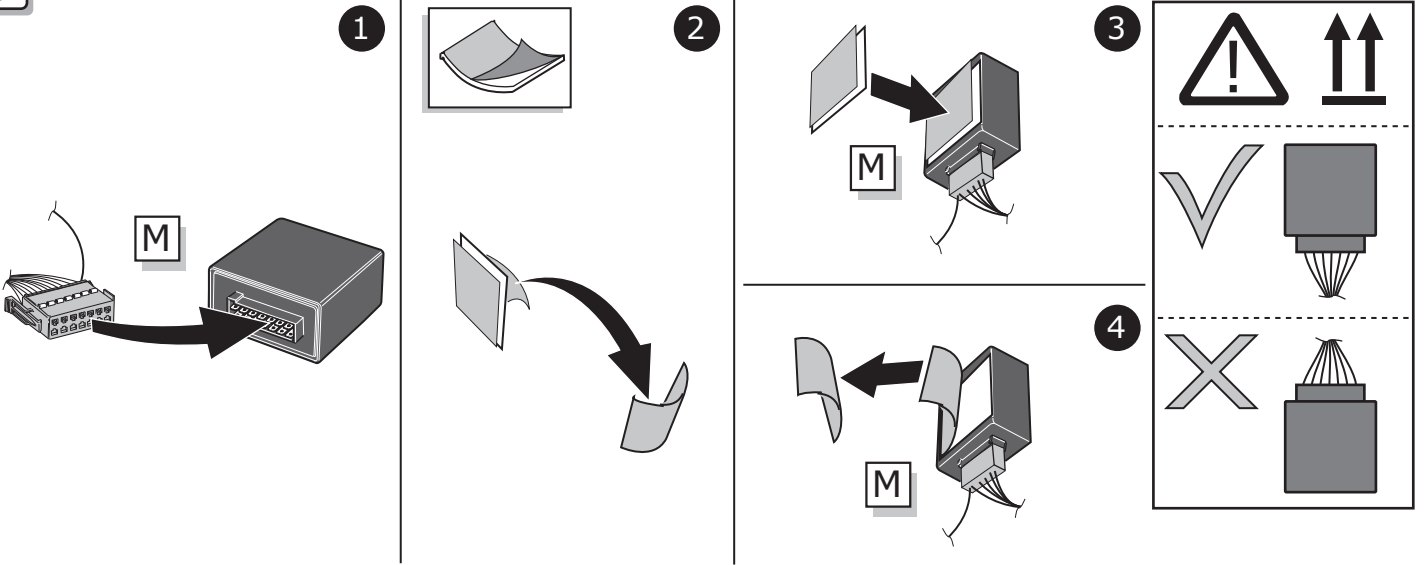
Option 2



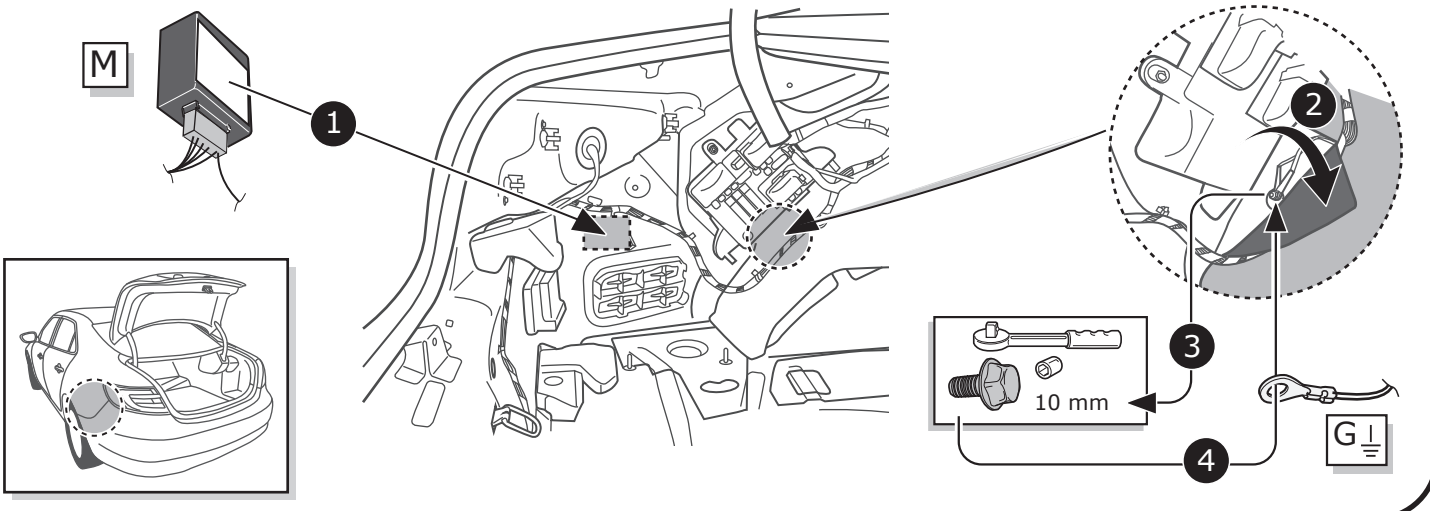
5



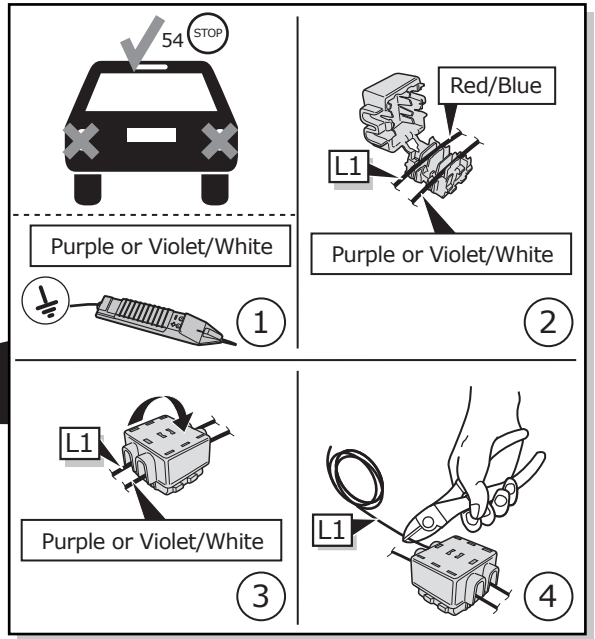
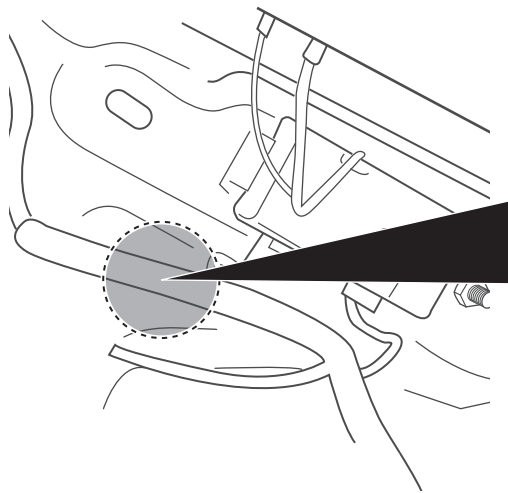
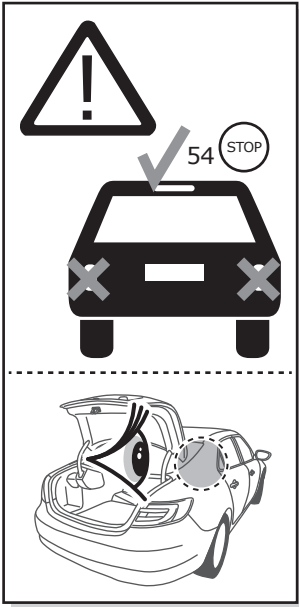
6



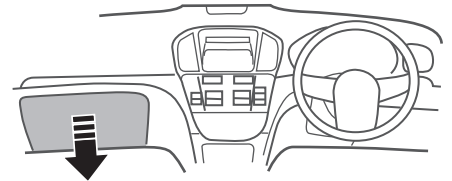
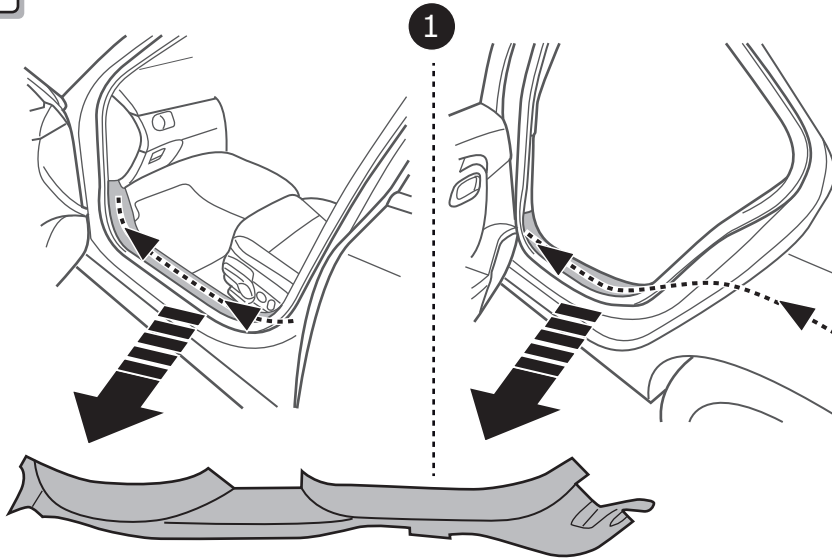
7



8

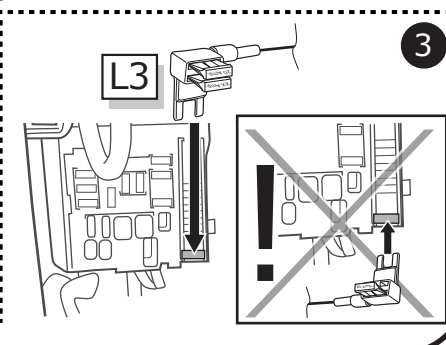
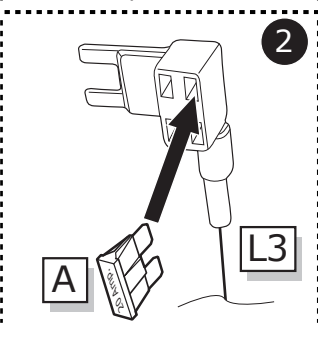
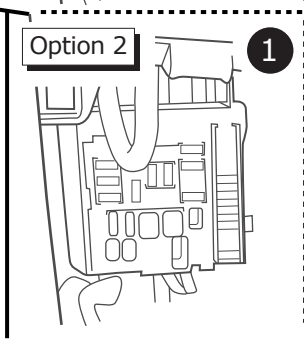
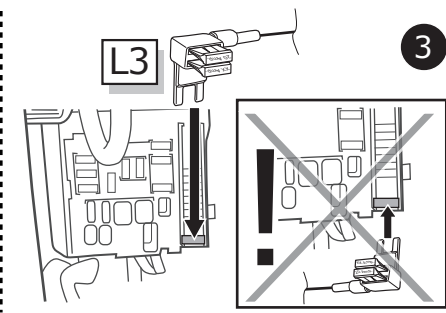
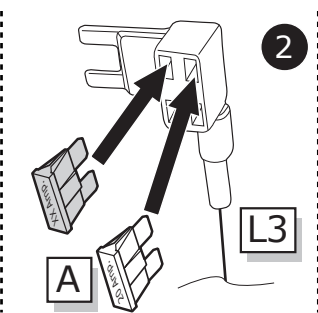
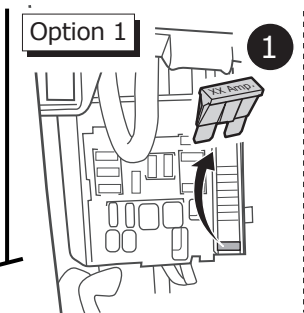
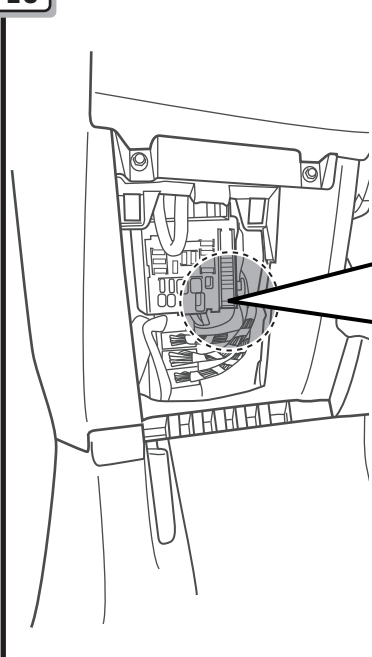


9



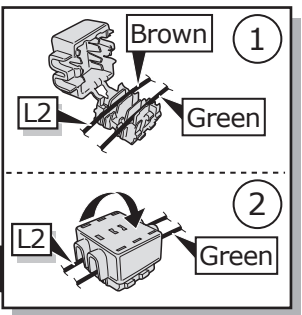
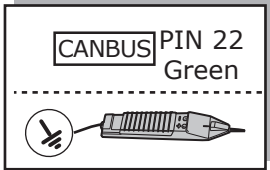
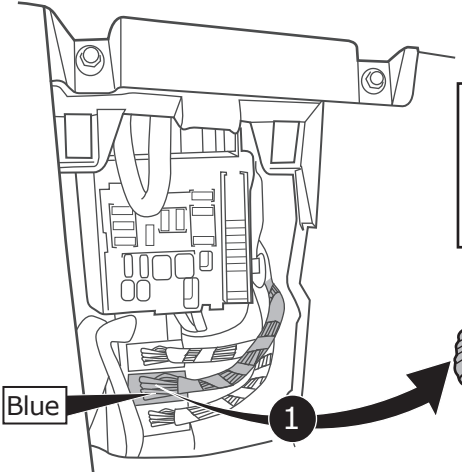
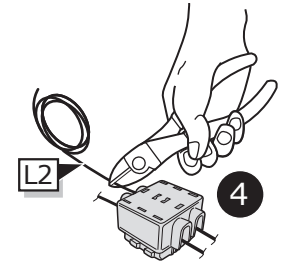
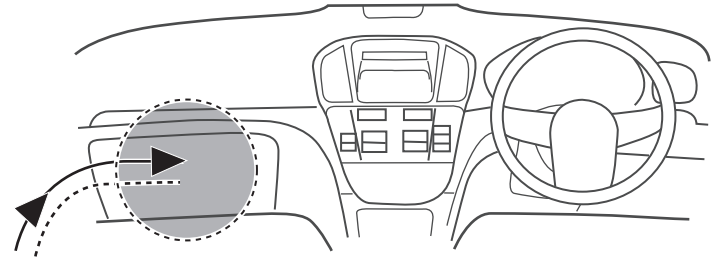
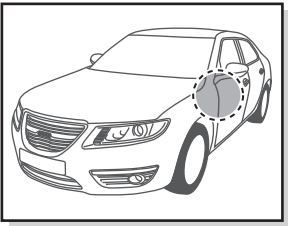
2

10



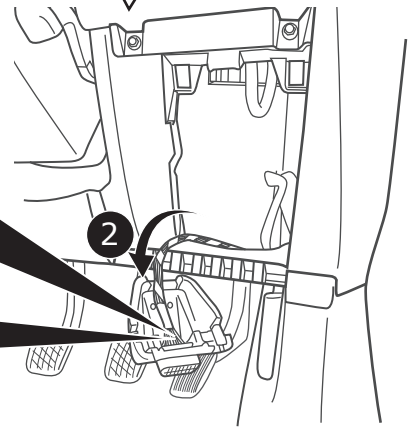
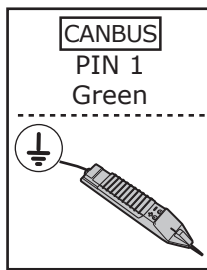
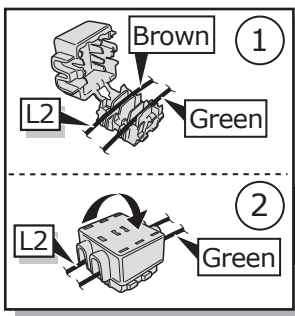
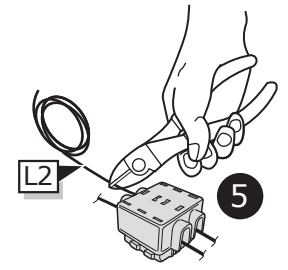
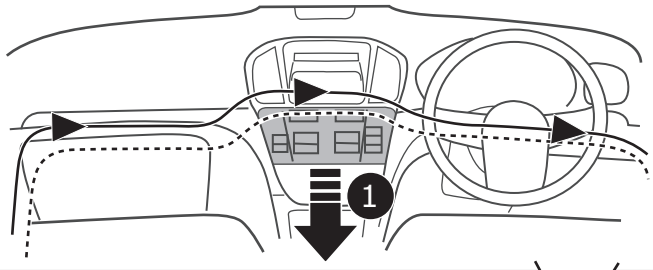
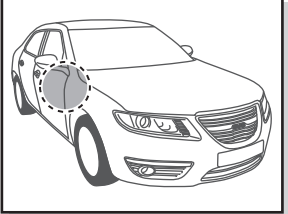
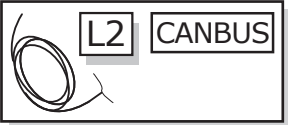
11

### Option 1



12

### Option 2



13

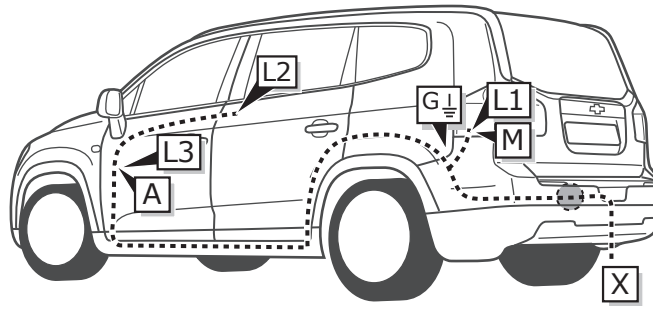


INFO

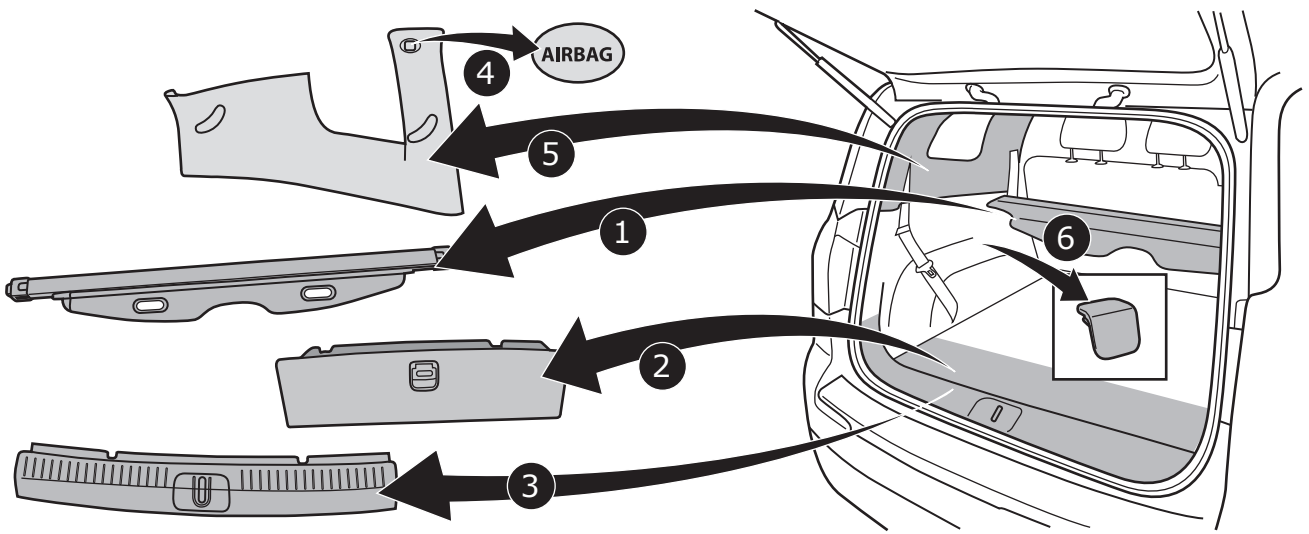
Orlando

Pag. 16

Pag. 19



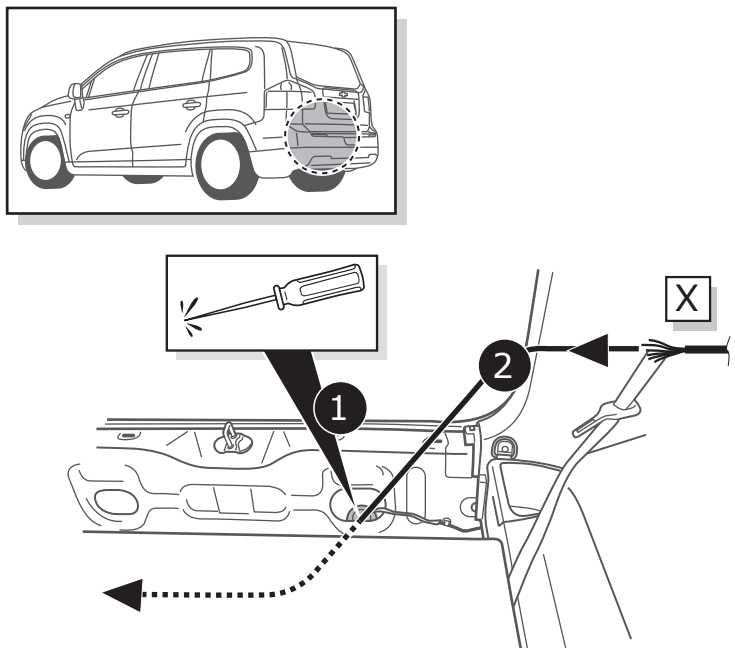
1



2



3





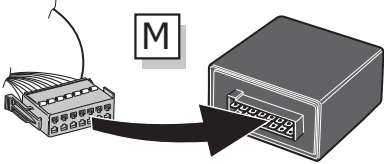
4



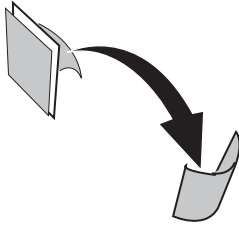
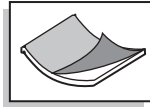
Pag. 35

5

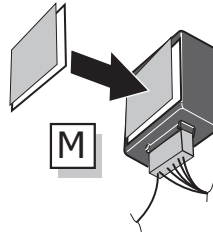
1



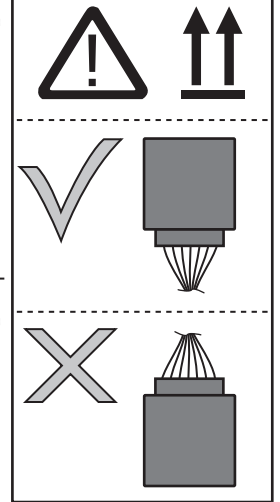
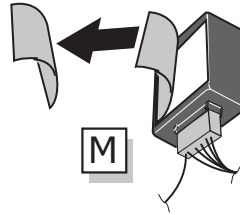
2



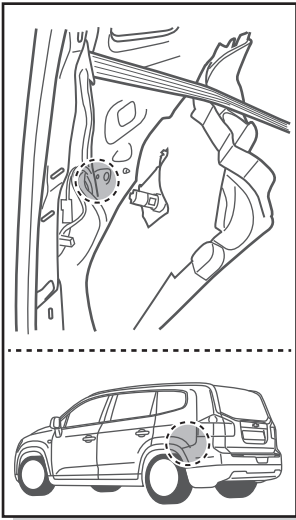
3



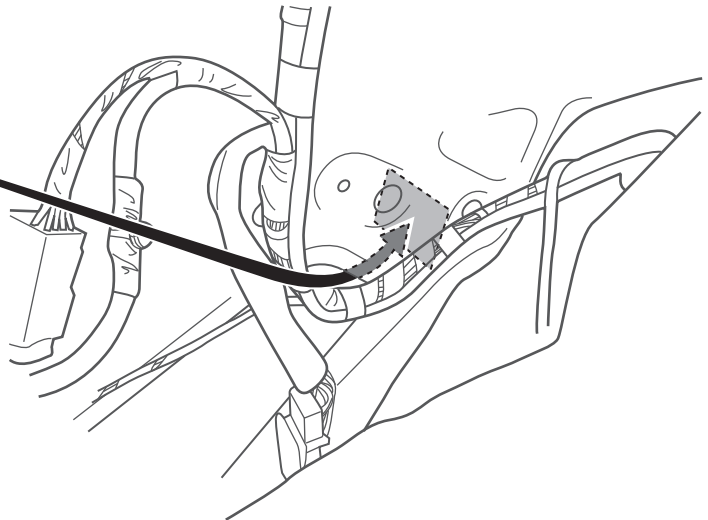
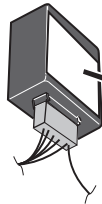
4



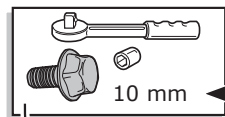
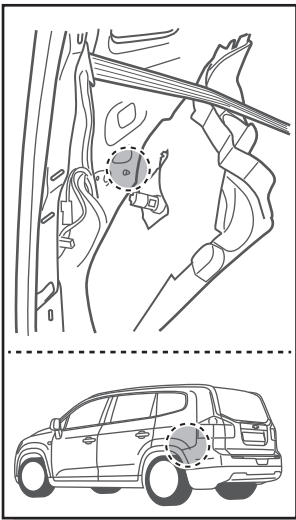
6



M



7

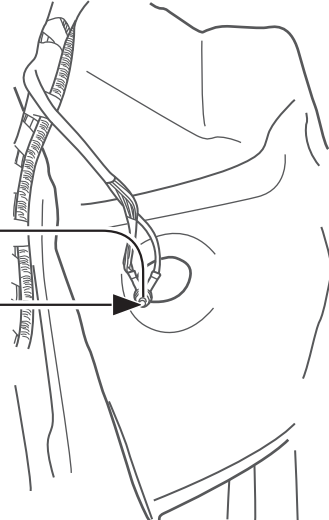


G

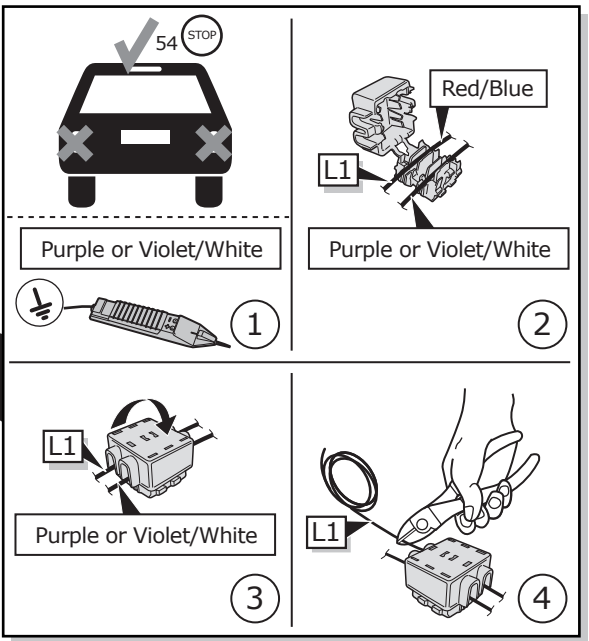
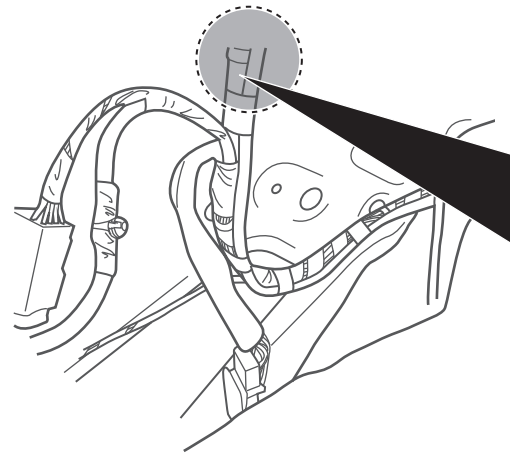
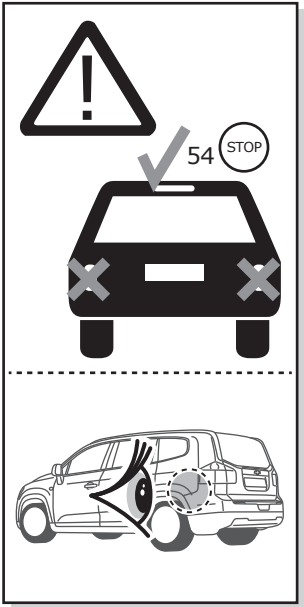


1

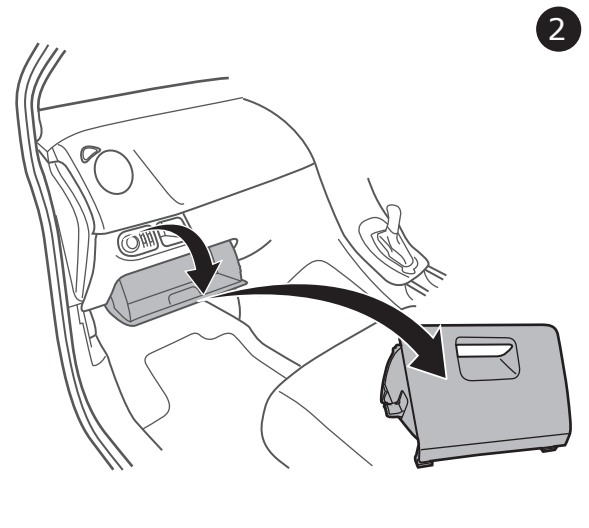
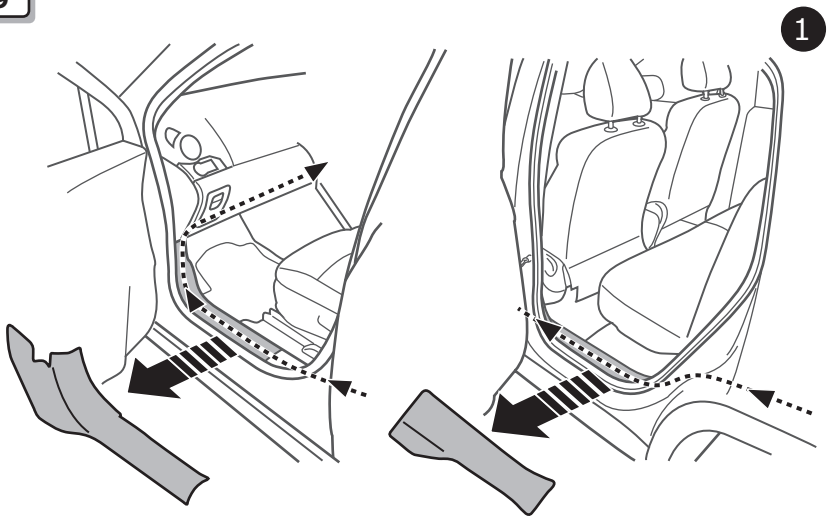
2



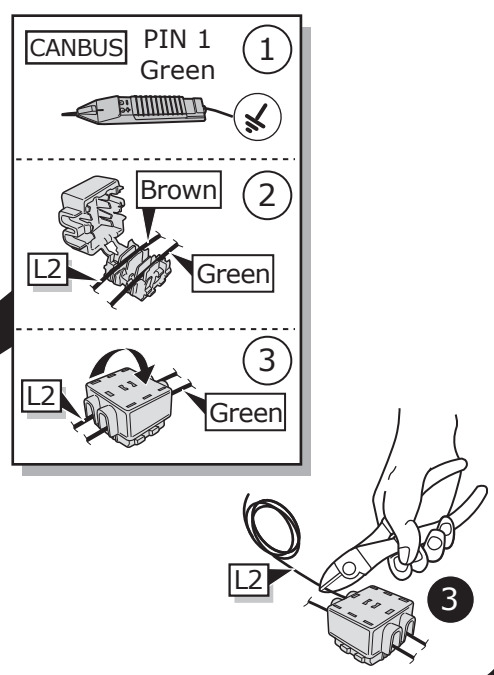
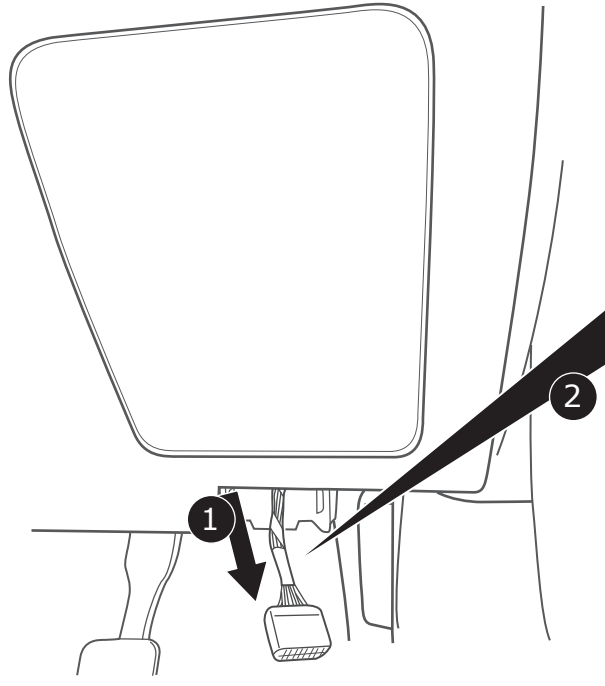
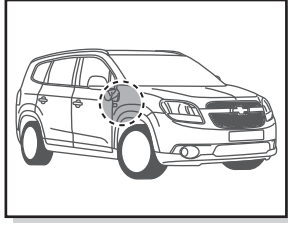
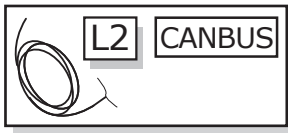
8



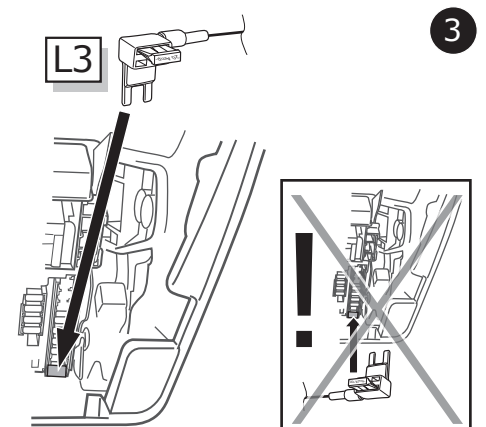
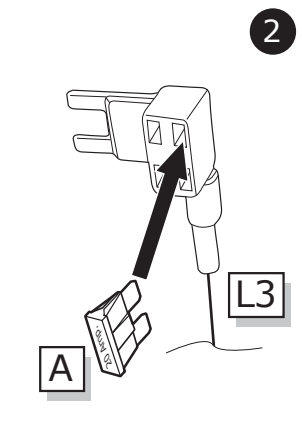
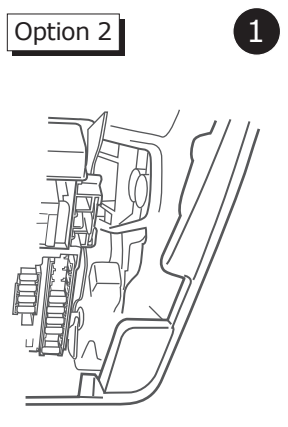
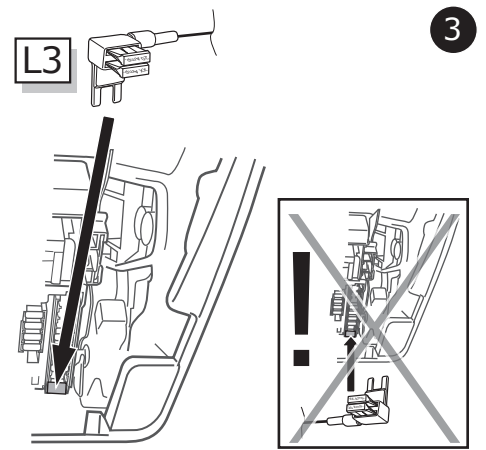
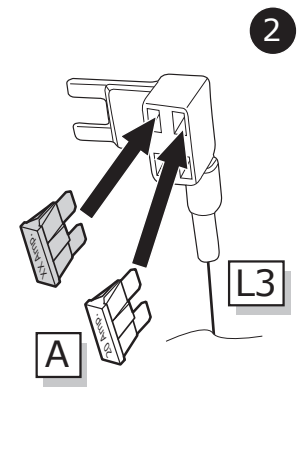
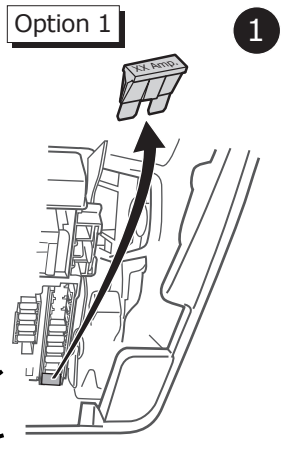
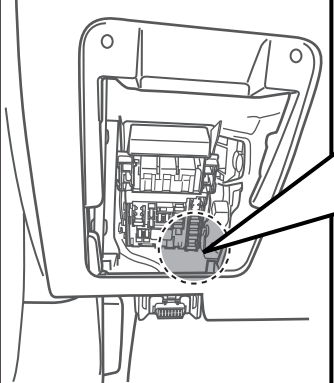
9



10



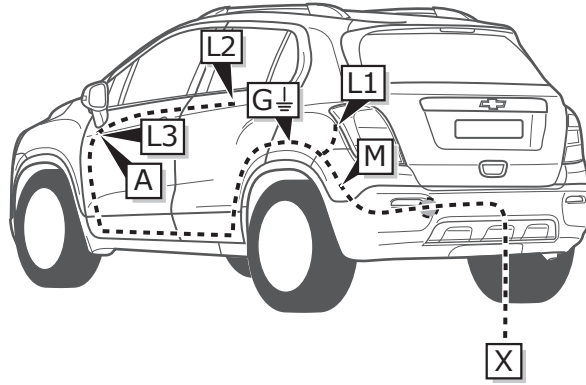
11



12

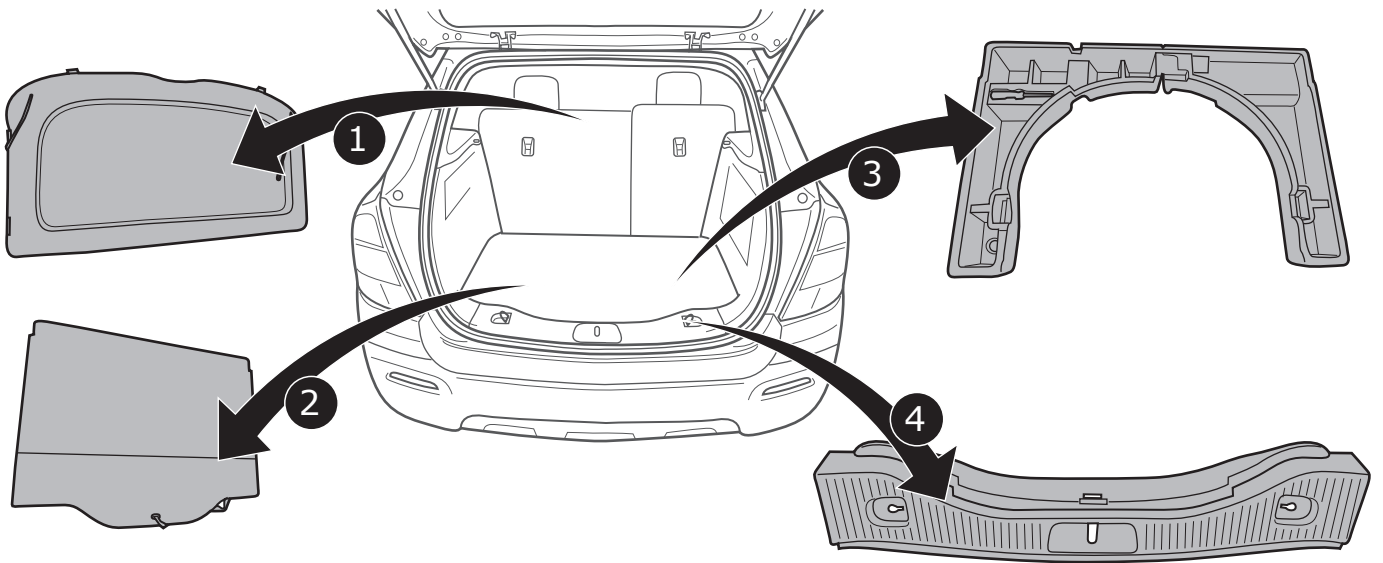


INFO

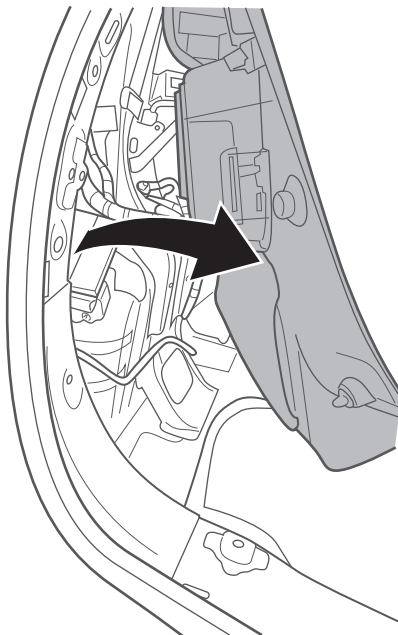


**Trax**  
Pag. 20  
-  
Pag. 23

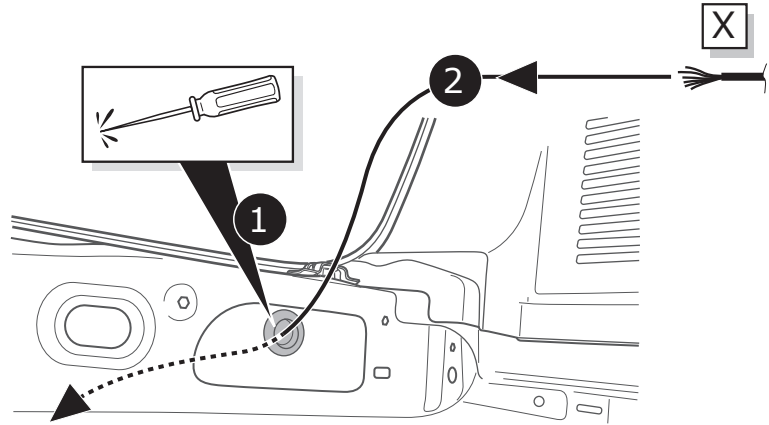
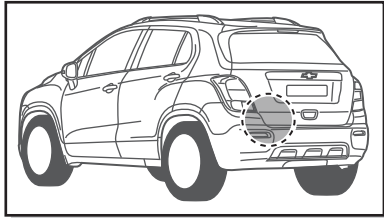
1



2



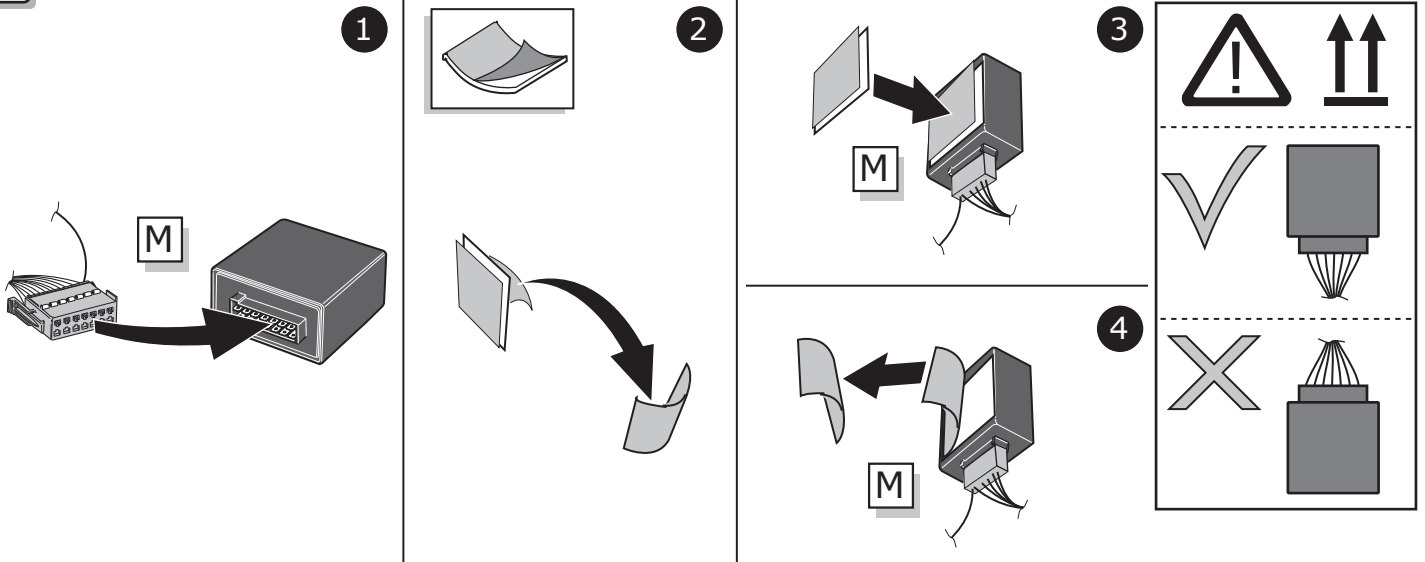
3



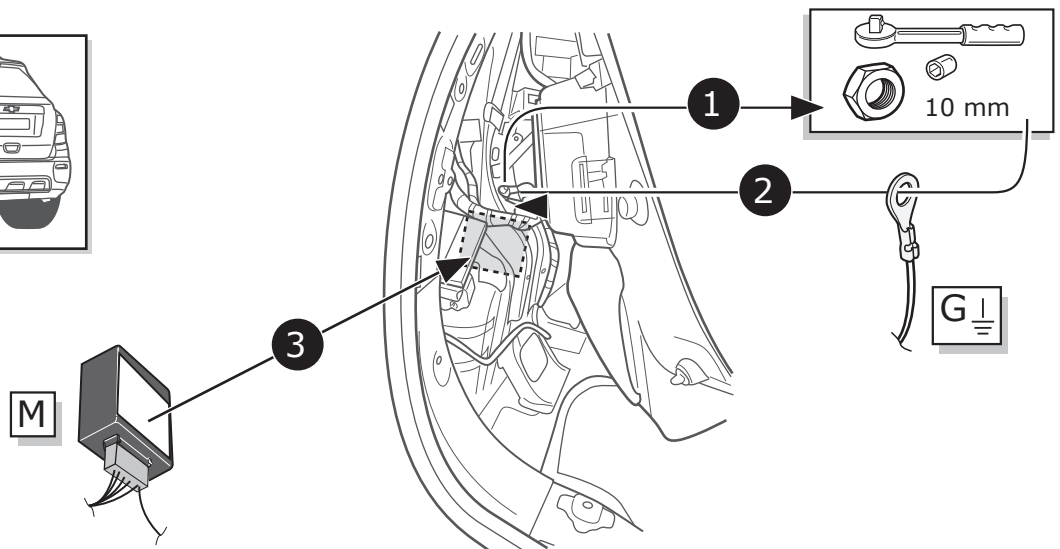
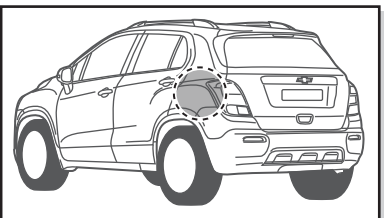
4



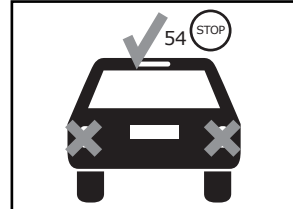
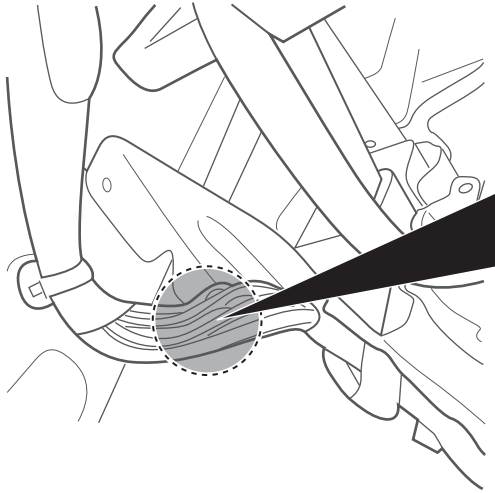
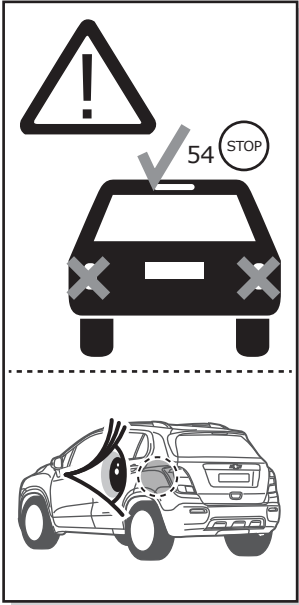
5



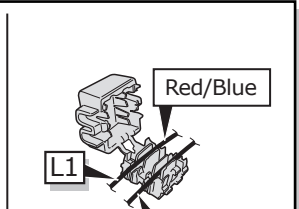
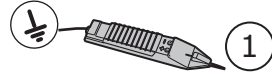
6



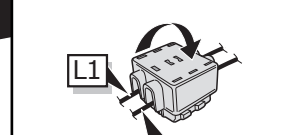
7



Purple or Violet/White



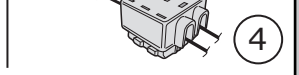
Purple or Violet/White



Purple or Violet/White

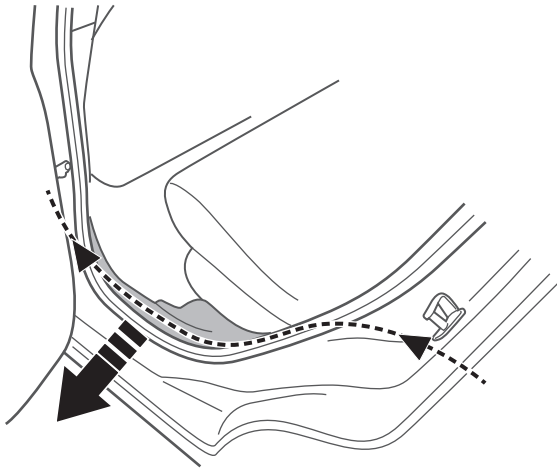


Purple or Violet/White

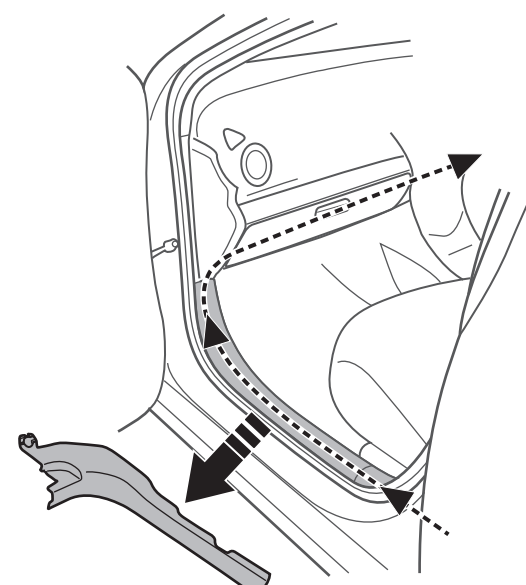


8

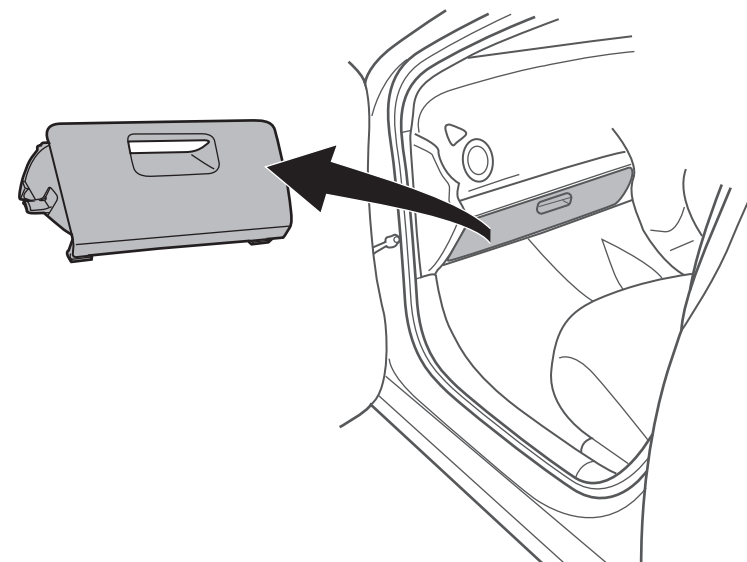
1



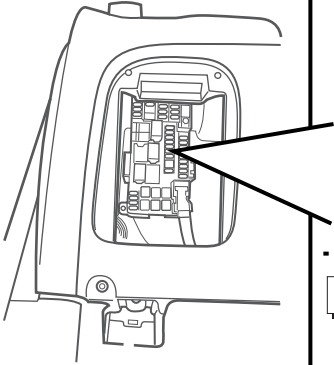
2



3

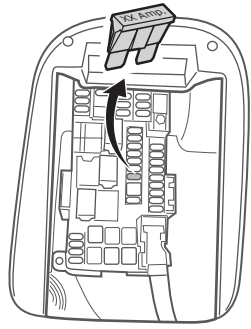


9

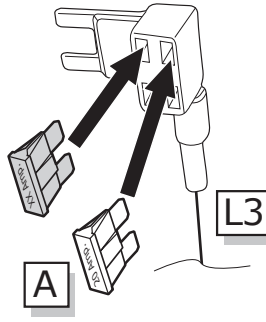


Option 1

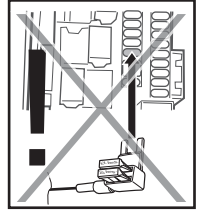
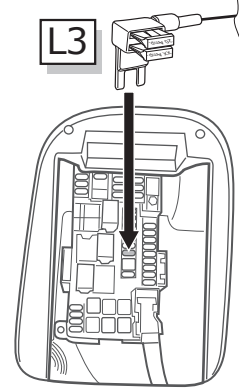
1



2

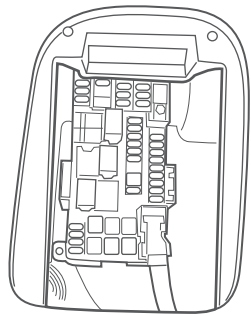


3

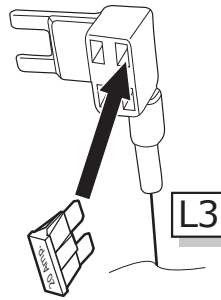


Option 2

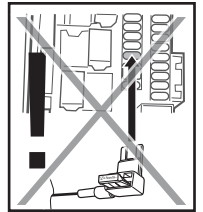
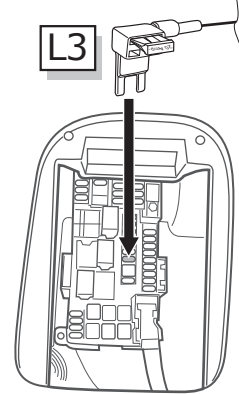
1



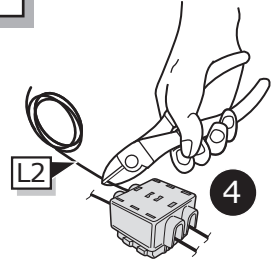
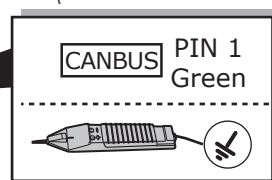
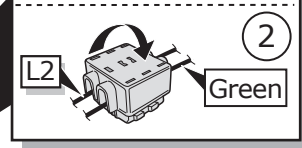
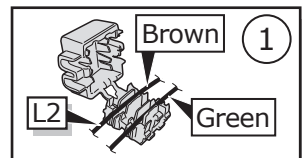
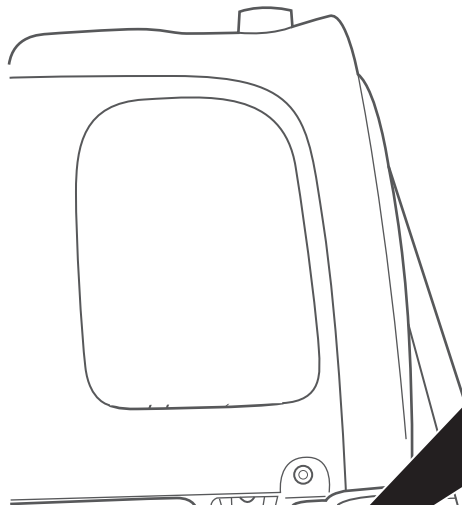
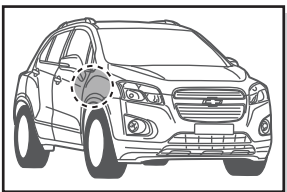
2



3



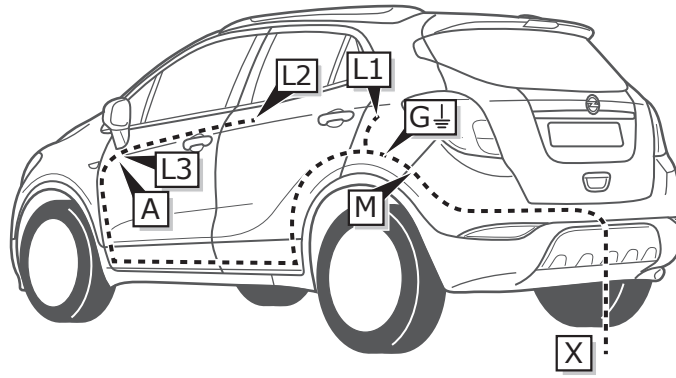
10



11



INFO

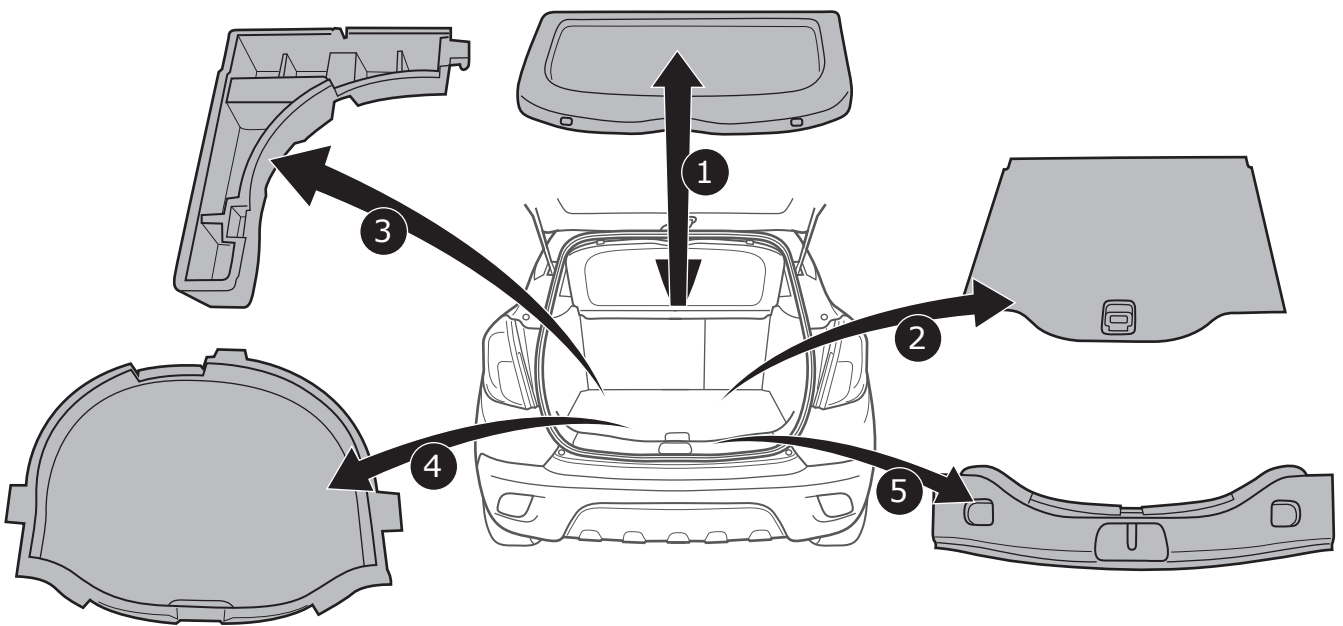


Mokka

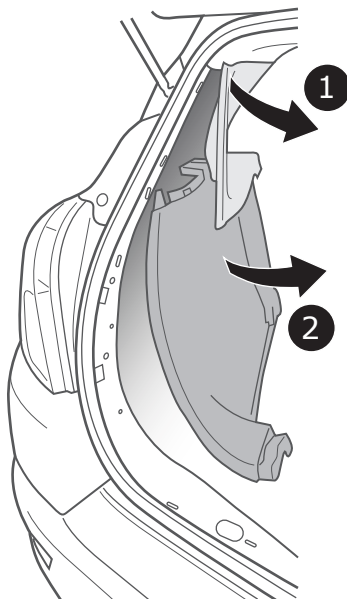
Pag. 24

-  
Pag. 30

1

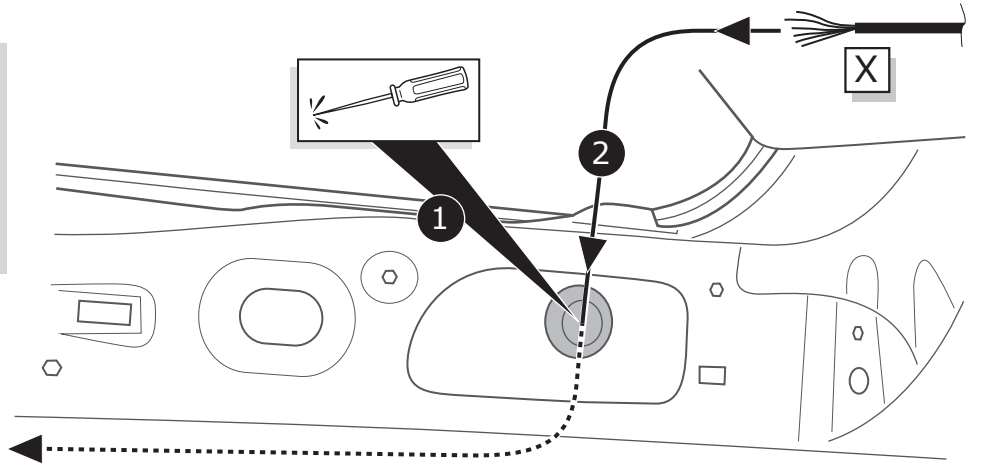
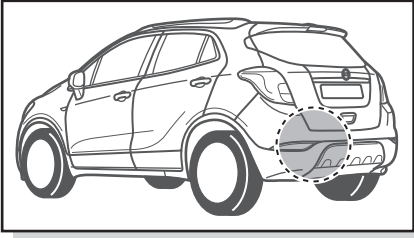


2





3

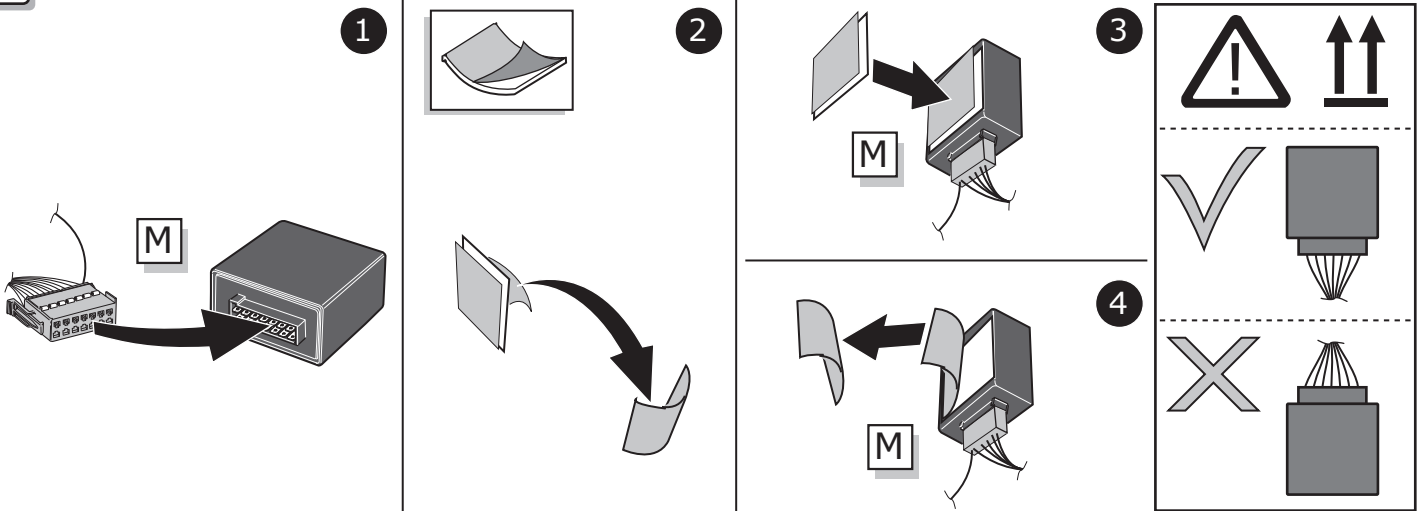


4

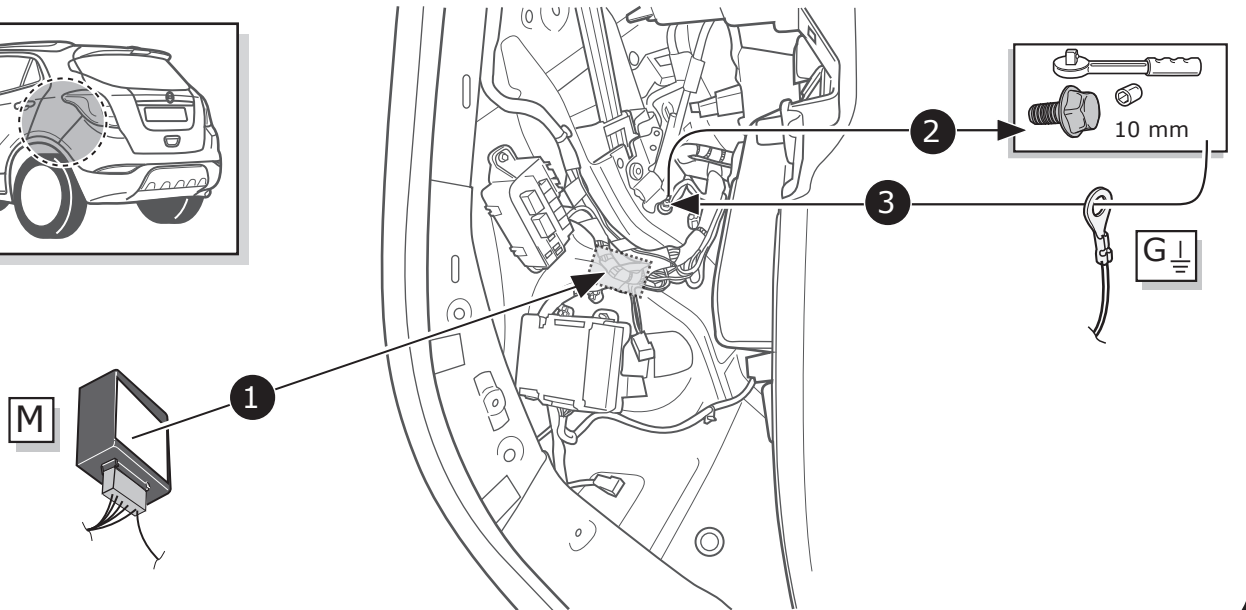
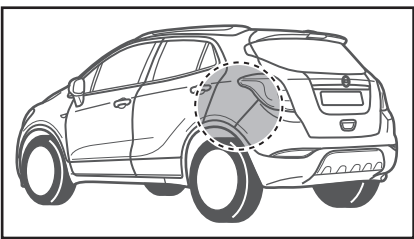


Pag. 35

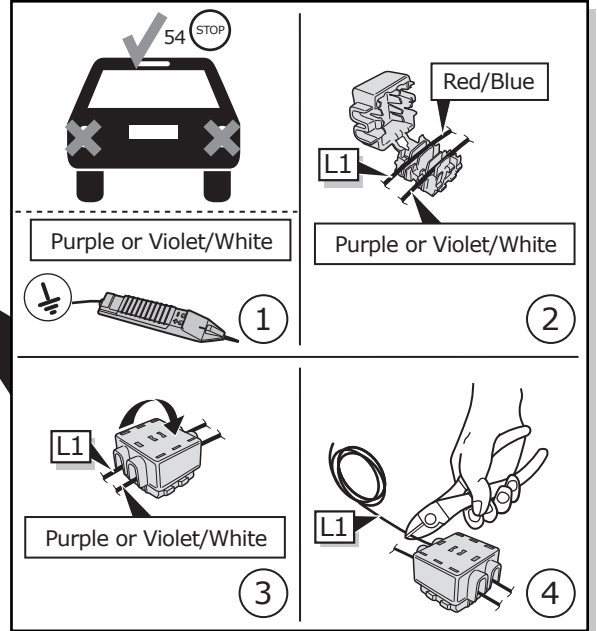
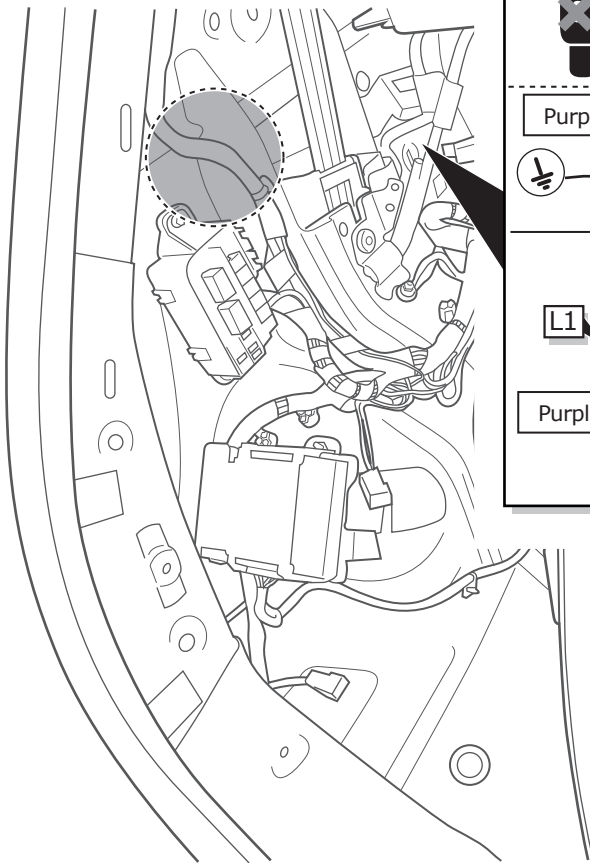
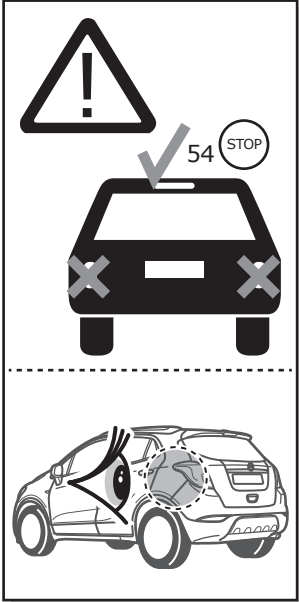
5



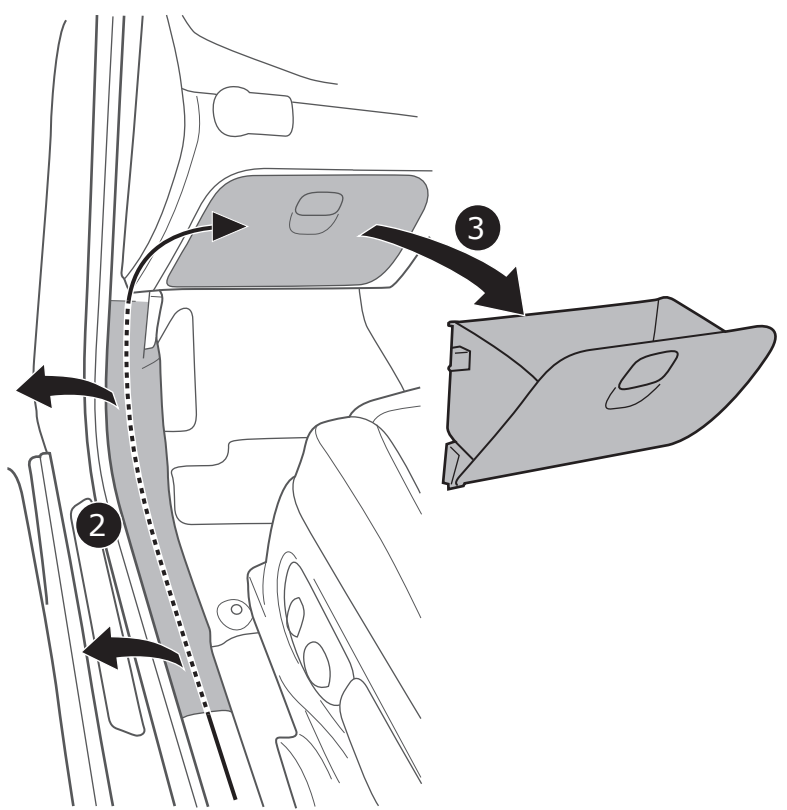
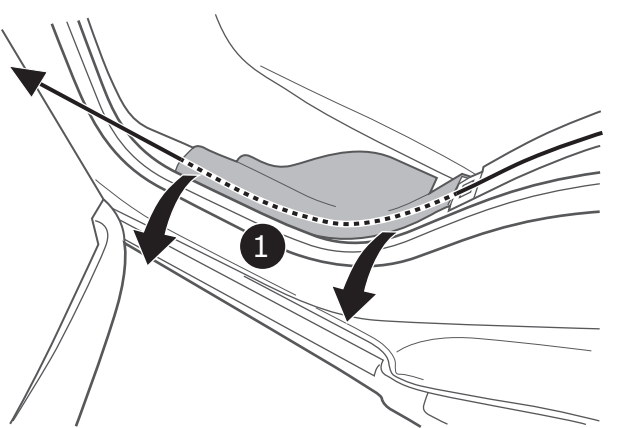
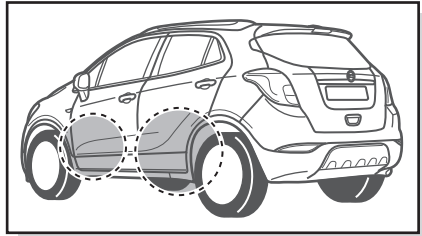
6



7



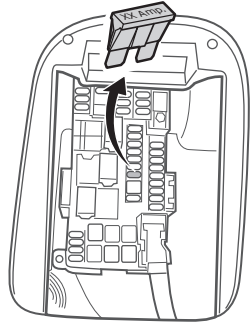
8



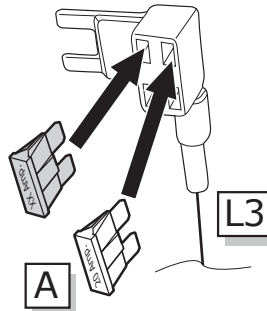
# Opel Mokka

Option 1

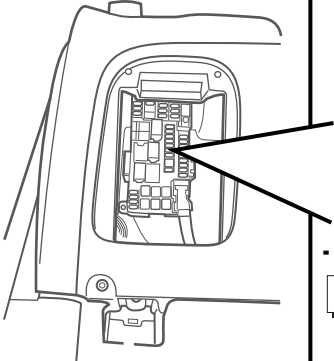
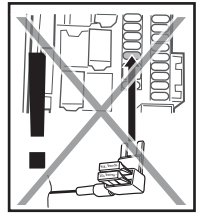
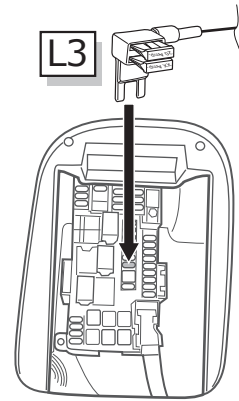
1



2

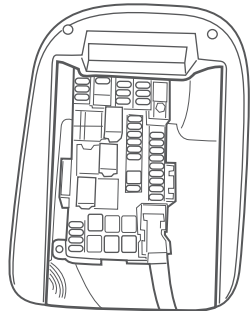


3

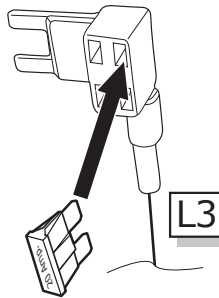


Option 2

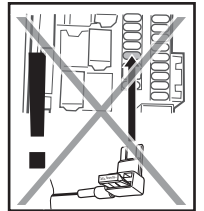
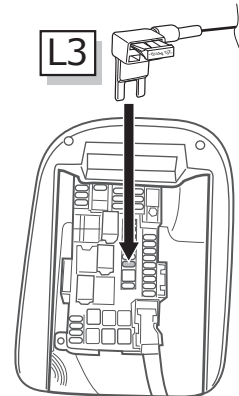
1



2



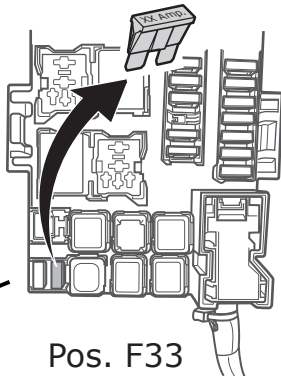
3



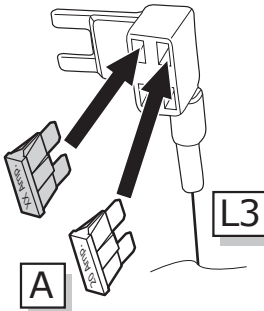
# Opel Mokka X

Option 1

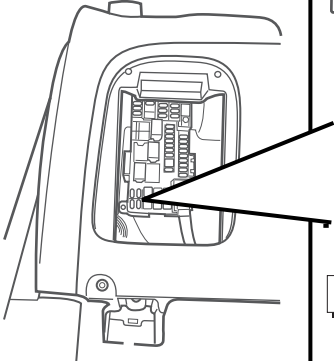
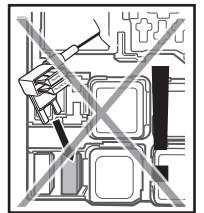
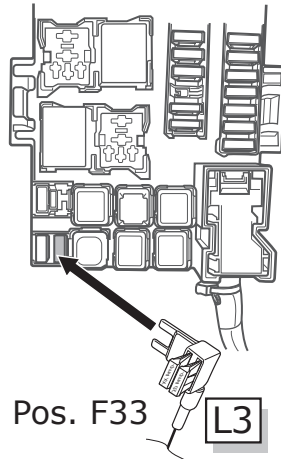
2



3

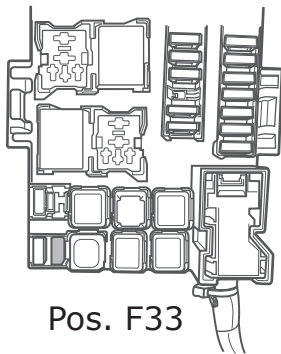


4

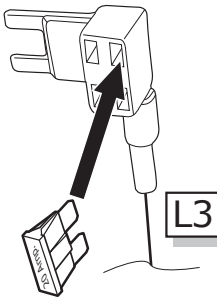


Option 2

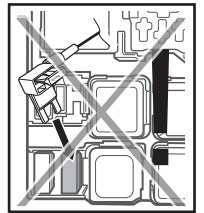
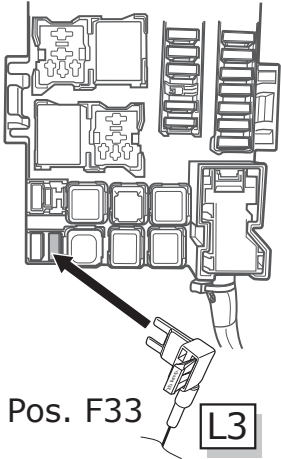
2



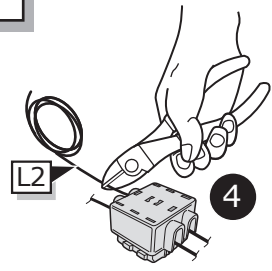
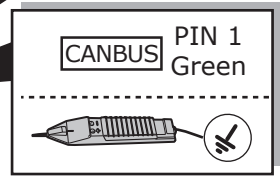
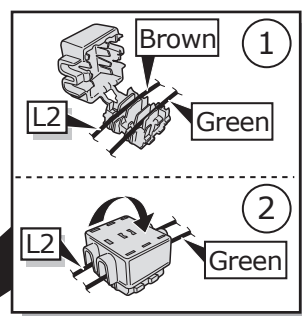
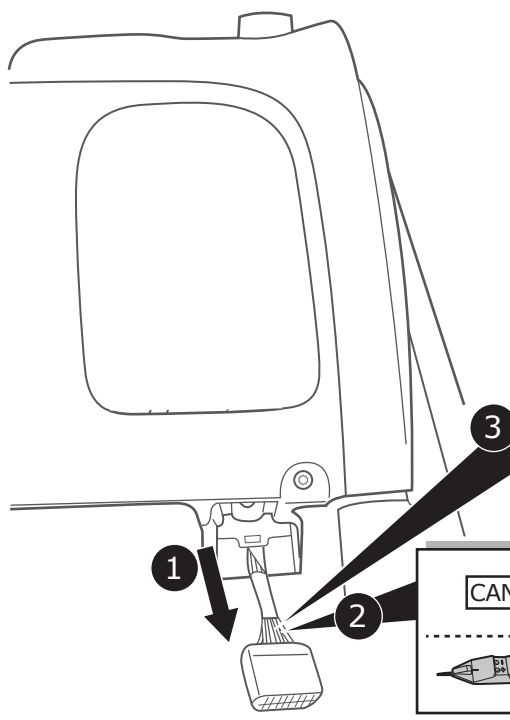
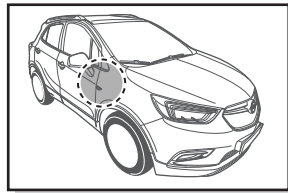
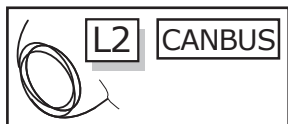
3



4



11

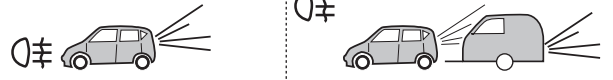
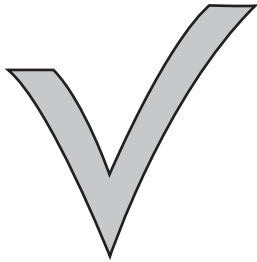
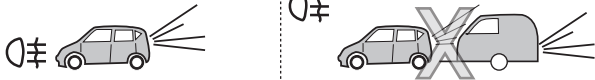


12



# SP-140-ZZ

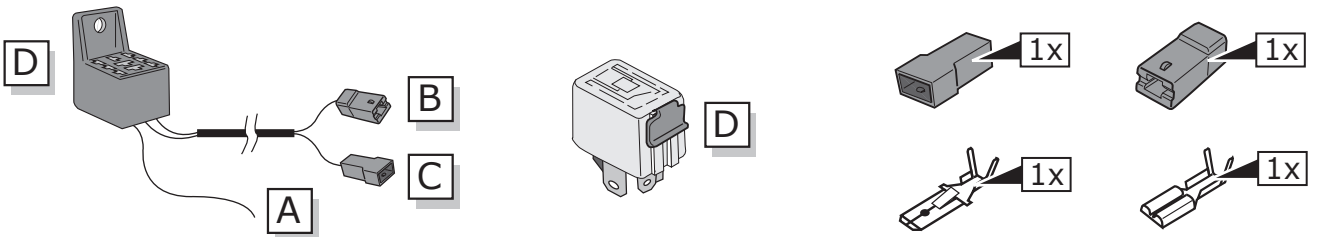
## INFO



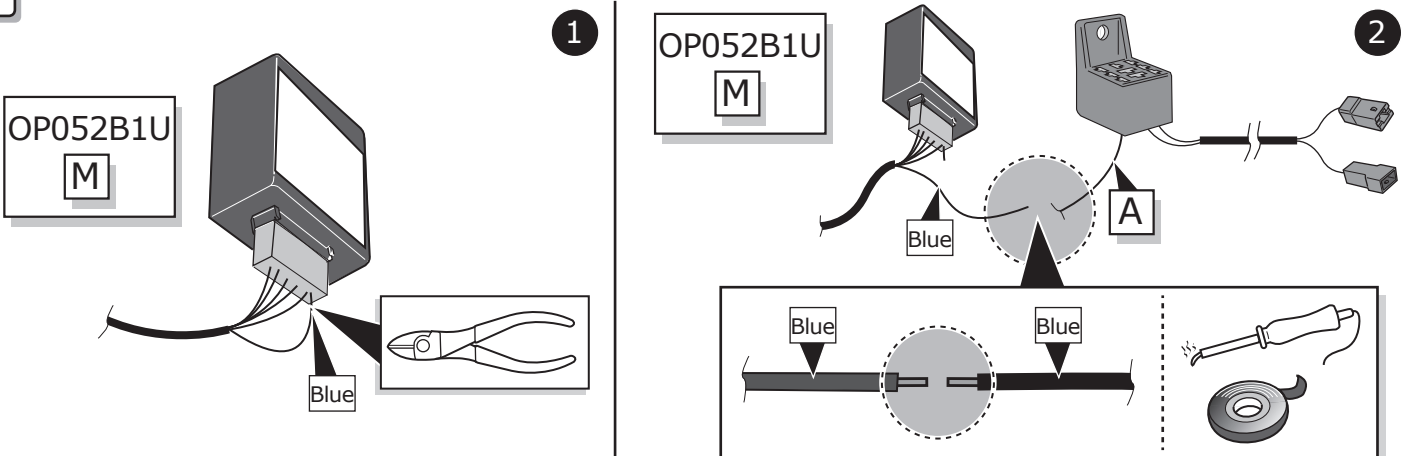
Supplier



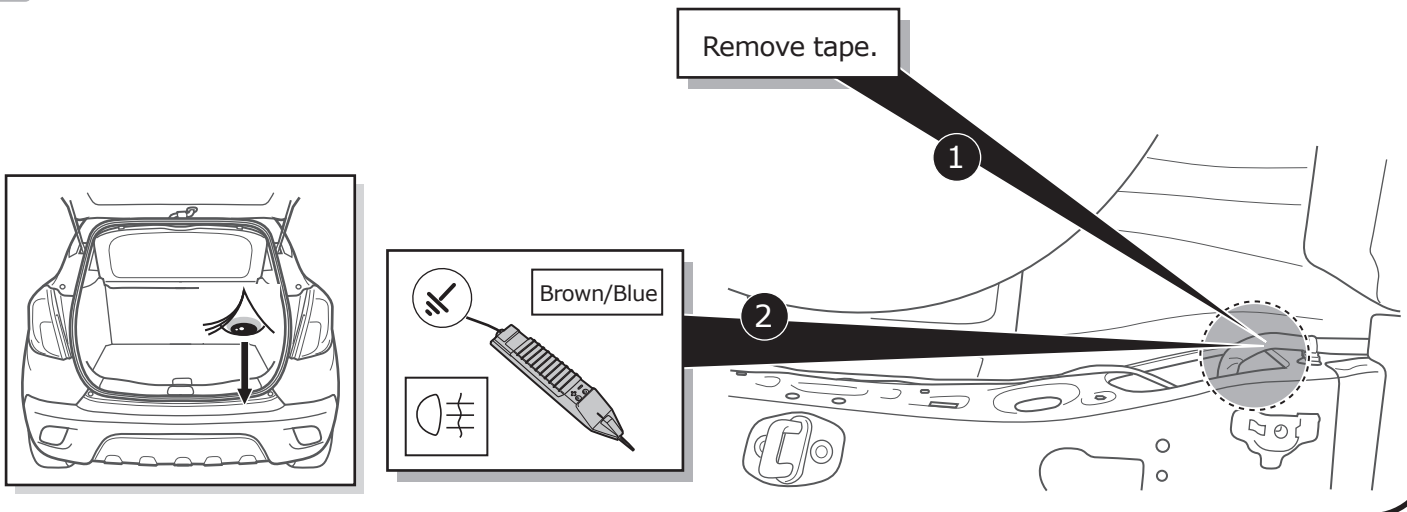
## A



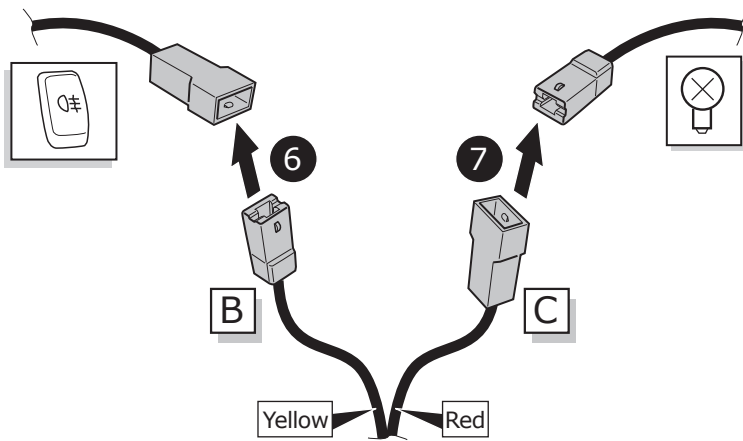
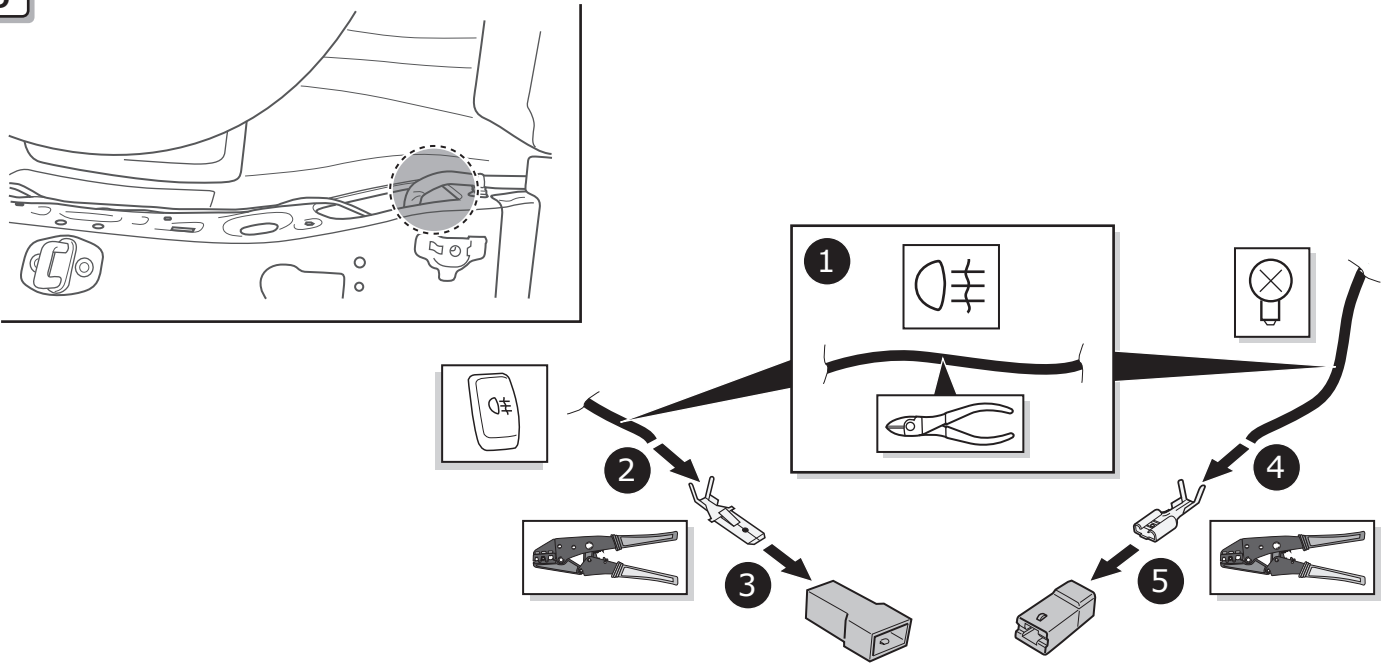
## B



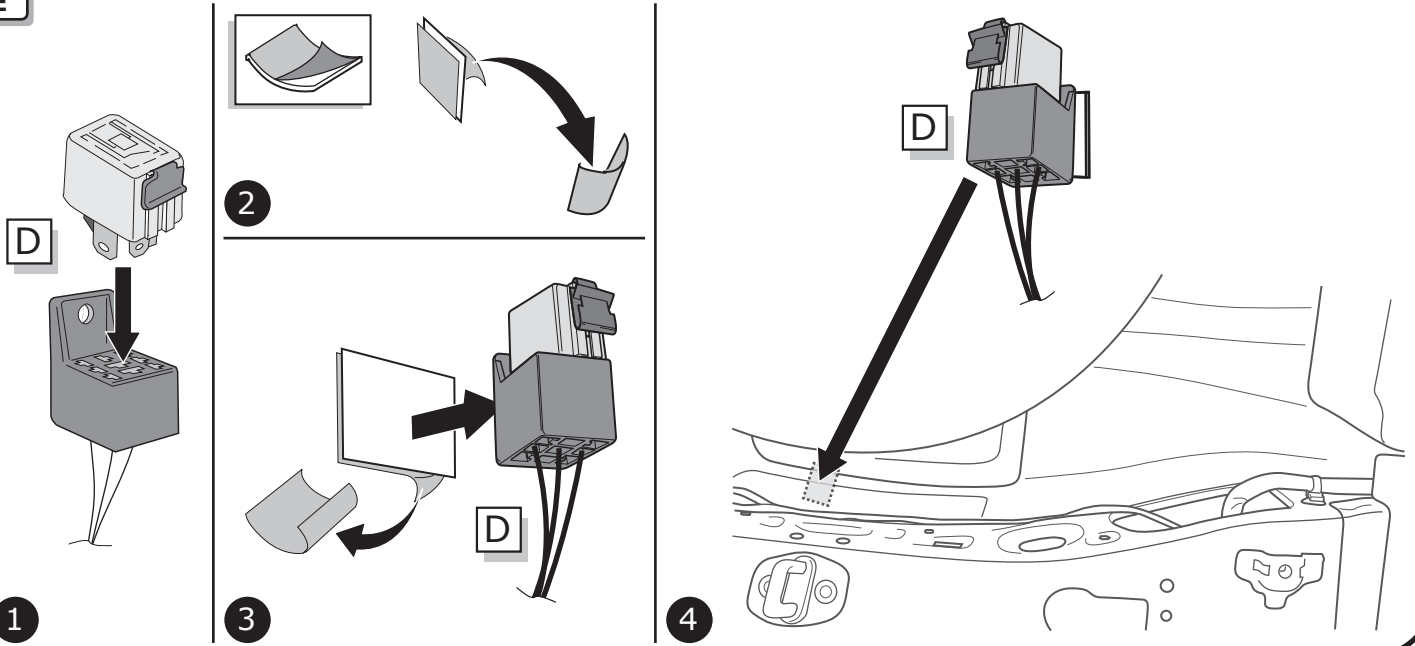
## C



D



E

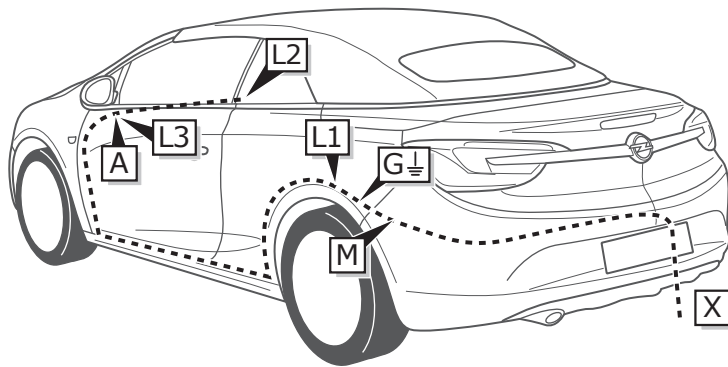


INFO

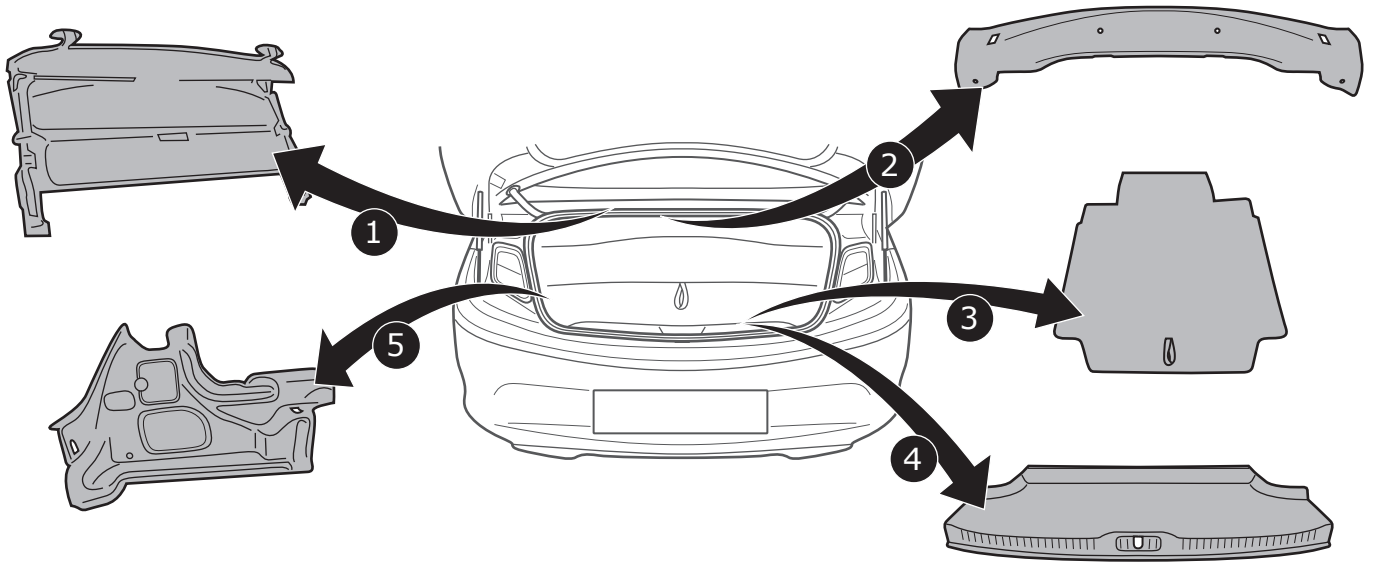
Cascada

Pag. 31

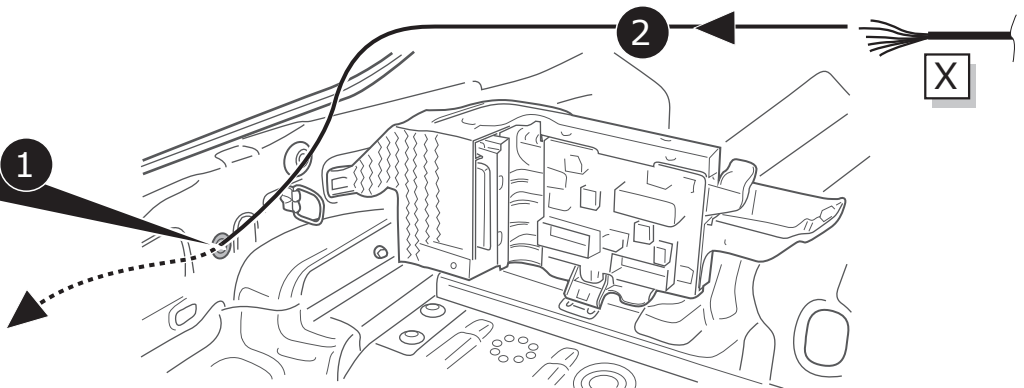
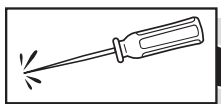
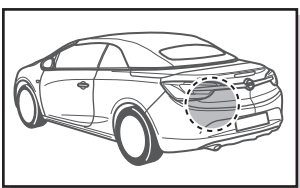
-  
Pag. 34



1



2

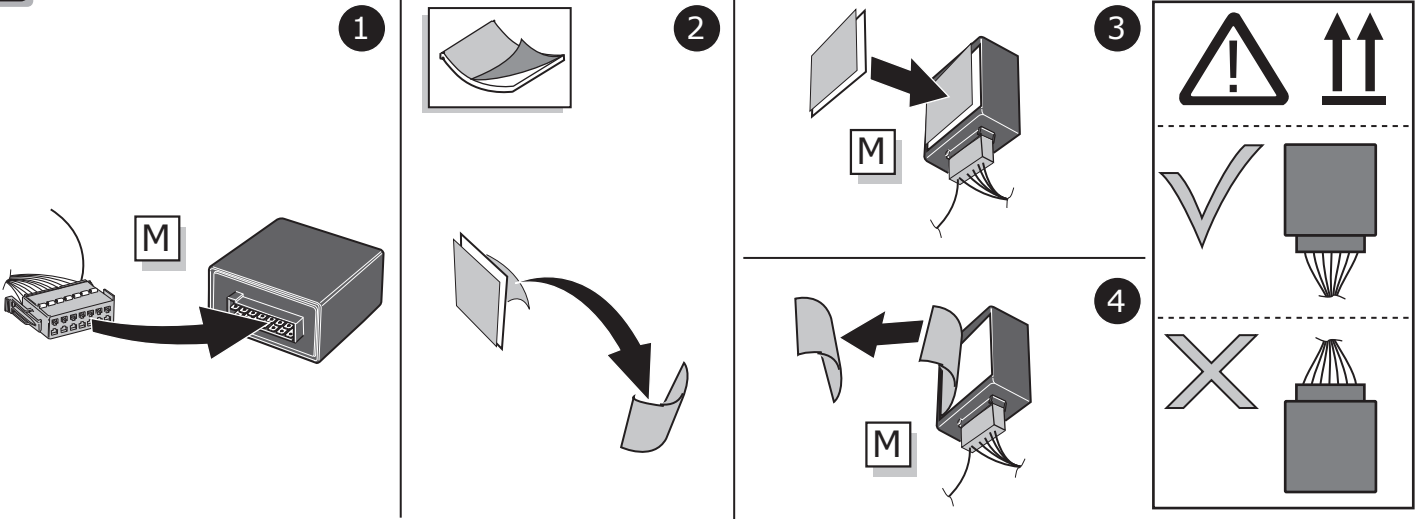


3

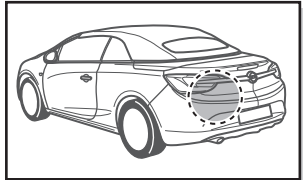
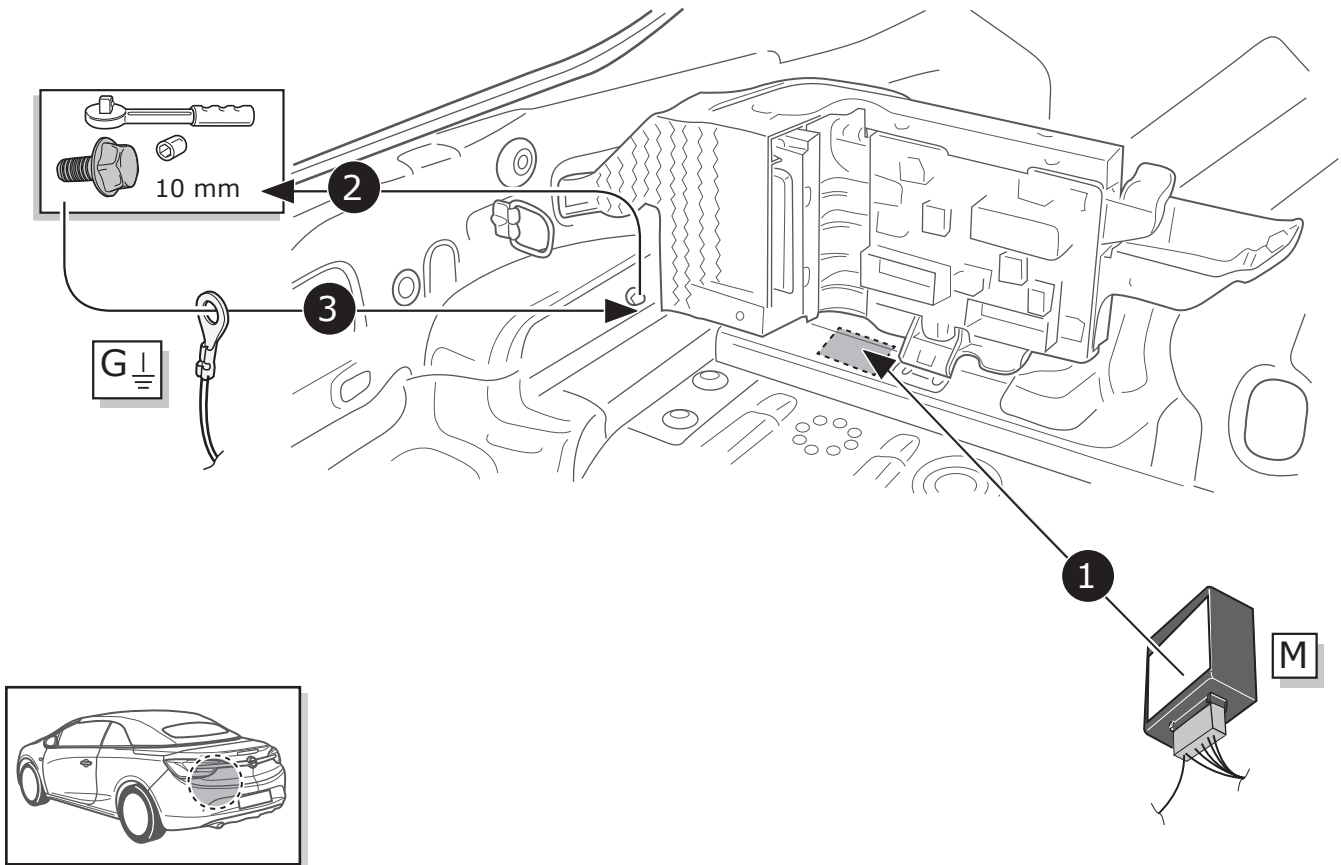


Pag. 35

4

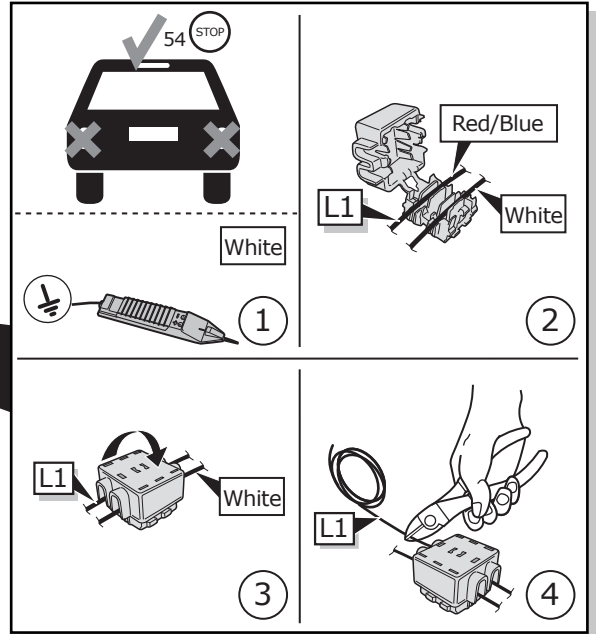
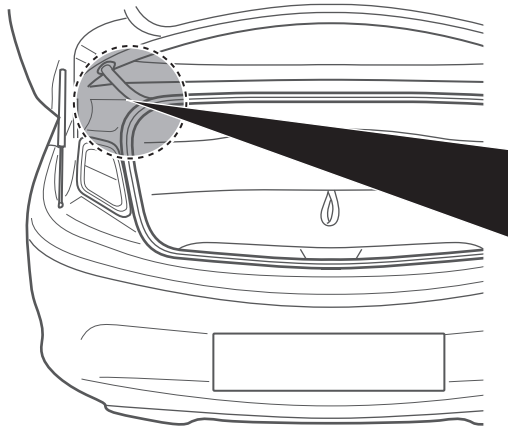
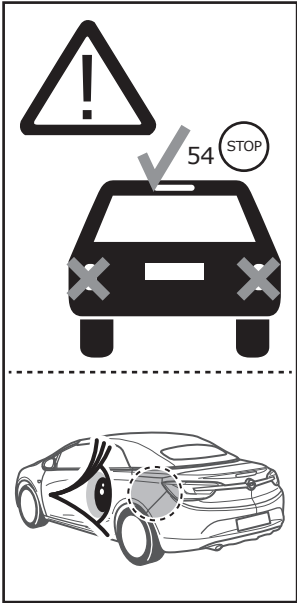


5

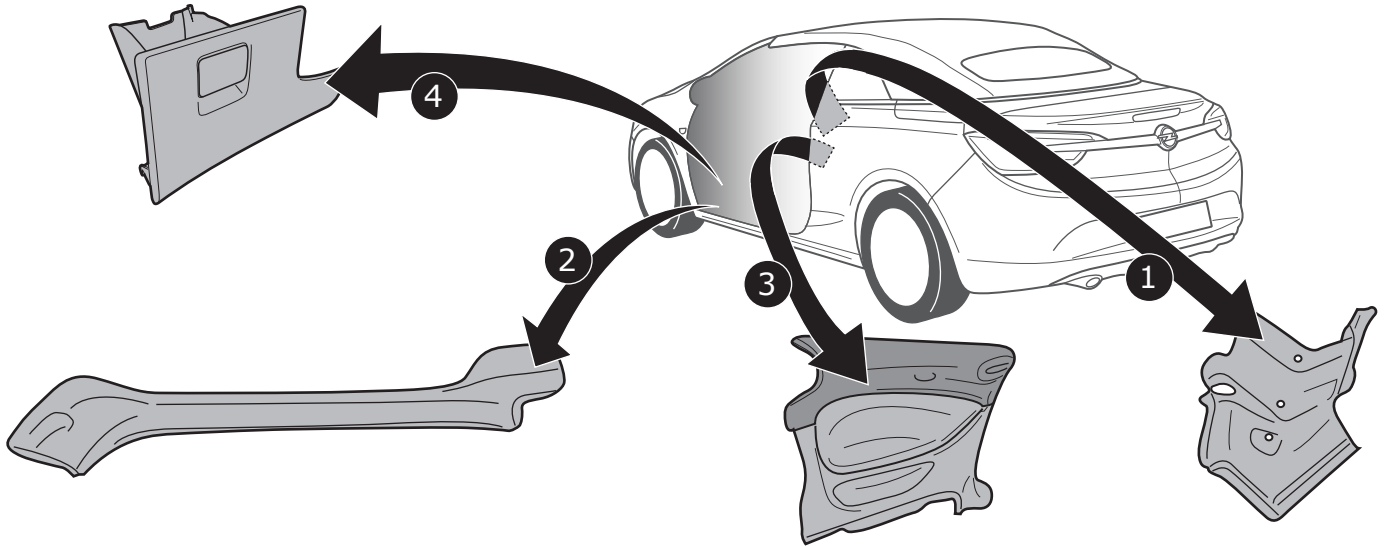




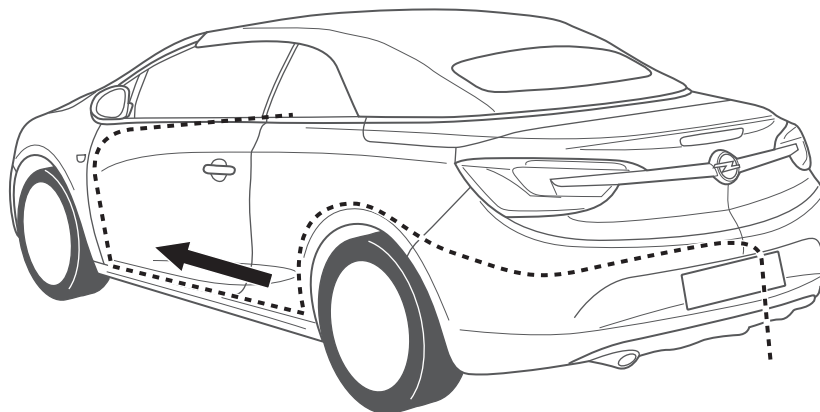
6



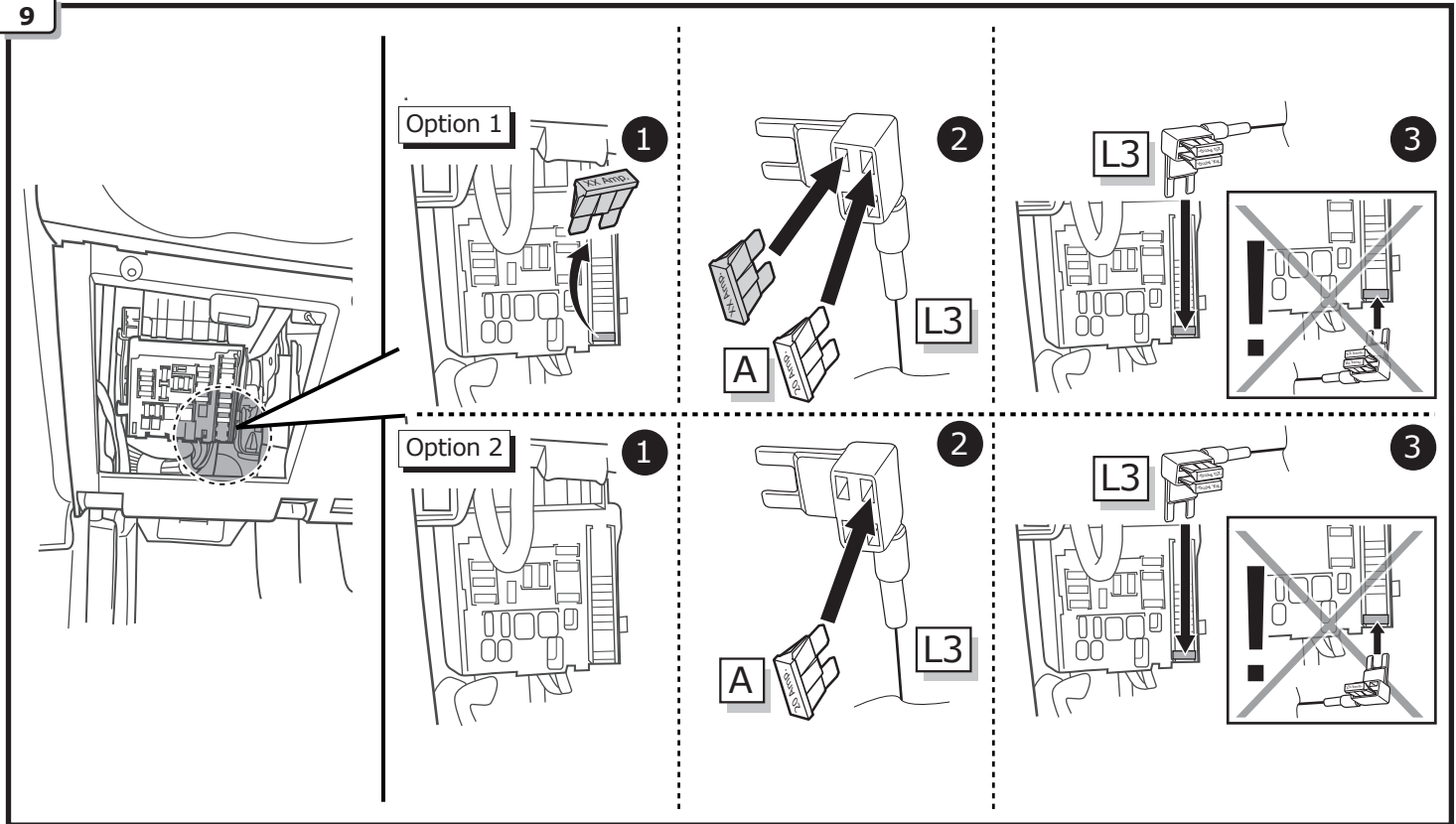
7



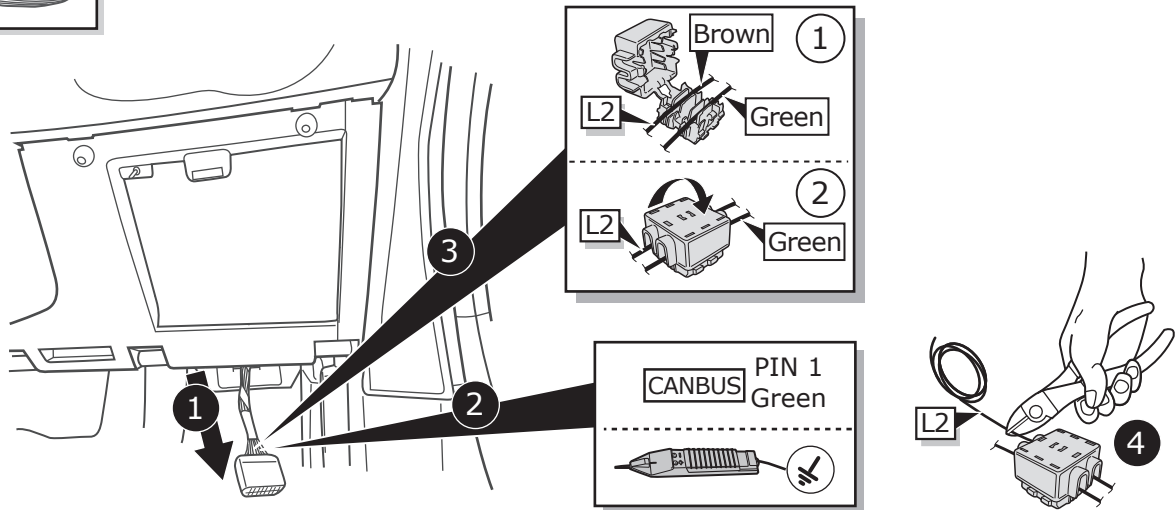
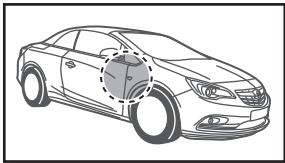
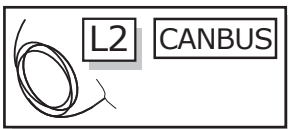
8



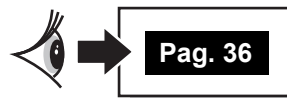
9



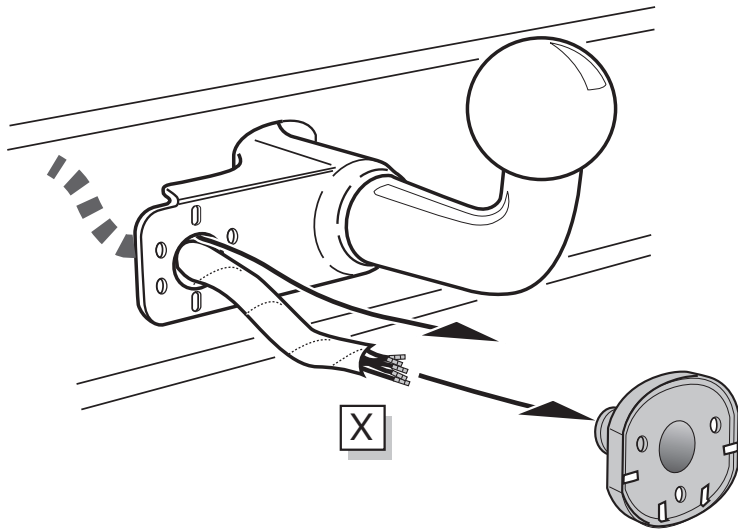
10



11



A



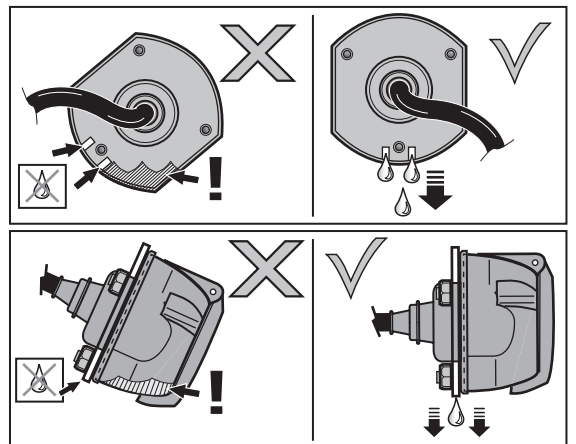
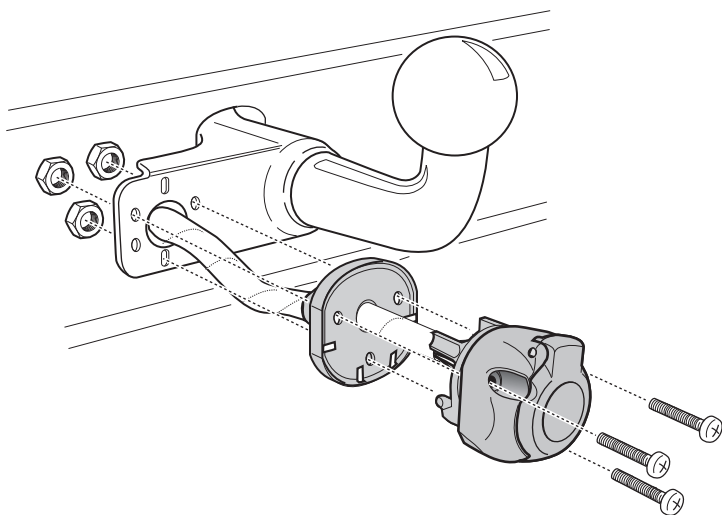
INFO

SOCKET CONNECTION

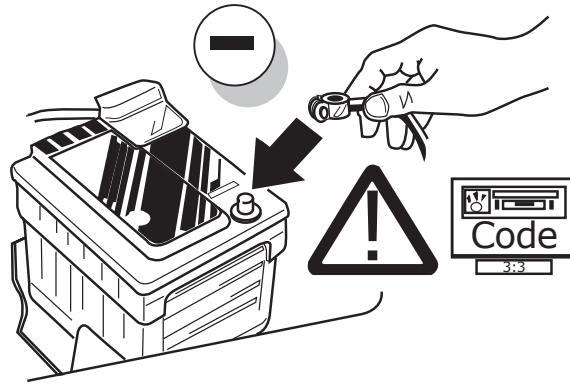


Pag. 38

B



A



B



Mokka

INFO



C

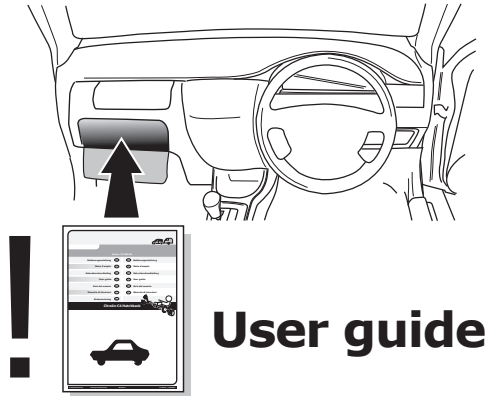


TEST ALL THE CIRCUITS WITH A TEST DEVICE WITH THE CORRECT POWER LOAD FOR EACH FUNCTION. A TEST DEVICE WITH LED'S CANNOT BE USED FOR THIS PURPOSE.

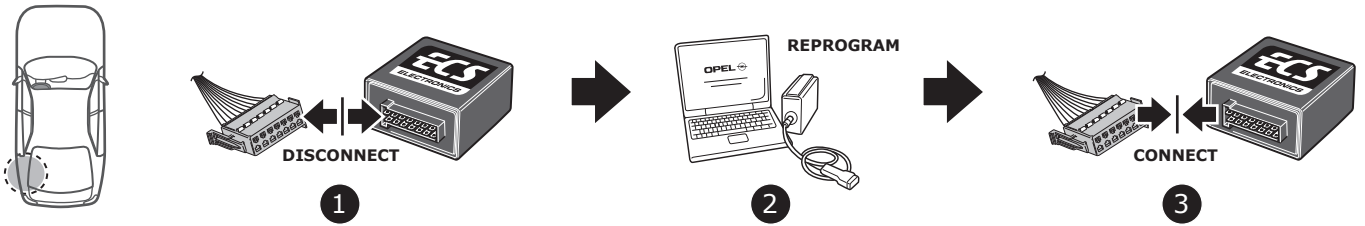
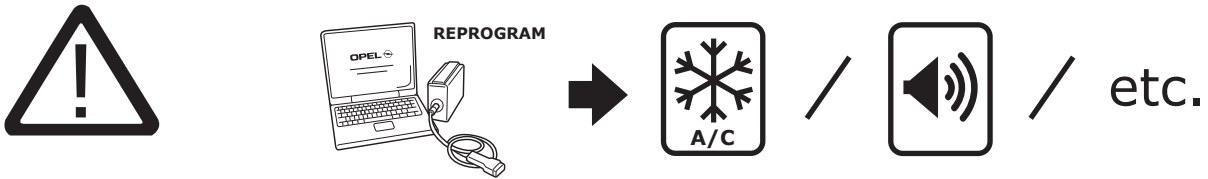
INFO

REINSTALL TRIM.

D

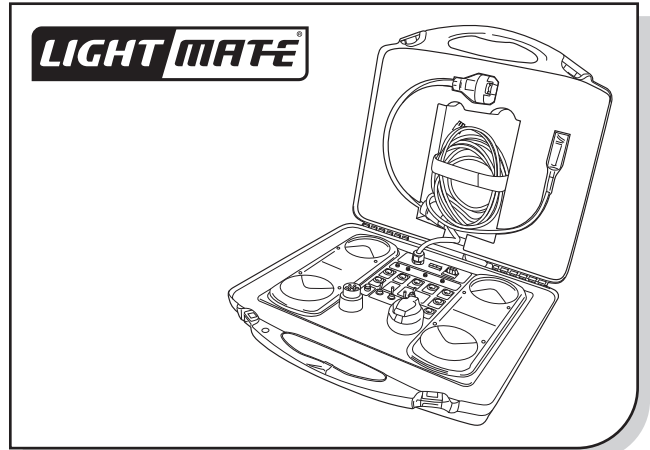
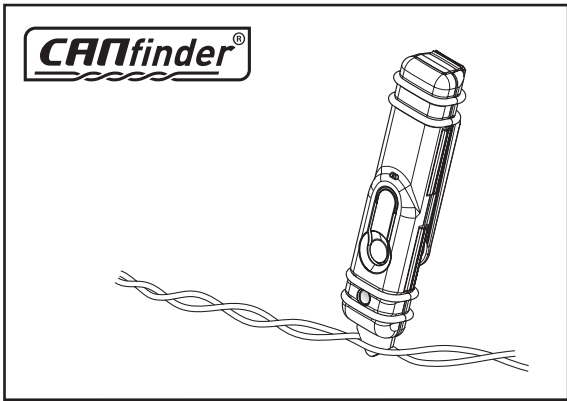


INFO





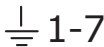




INFO

**Products & Service**



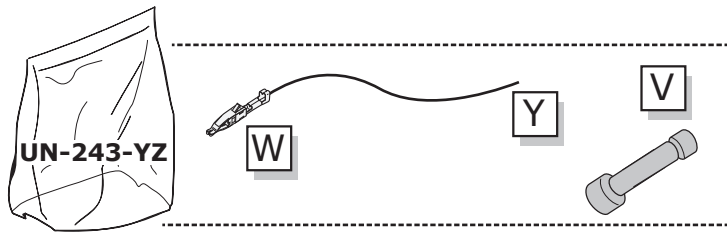
[http://www.ecs-electronics.nl/NL/catalogus/test\\_gereedschap](http://www.ecs-electronics.nl/NL/catalogus/test_gereedschap)

SOCKET CONNECTION

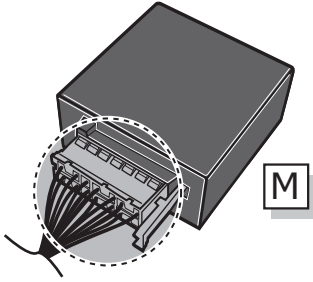
DIN/ISO 1724							
	1/L	2	3/31	4/R	5/58-R	6/54	7/58-L
Pmax	21W	21W		21W	42W	3x21W	42W
Colour	Yellow	Blue	White	Green	Brown	Red	Black

# UN-243-YZ Reverse lamp pre-wire extension

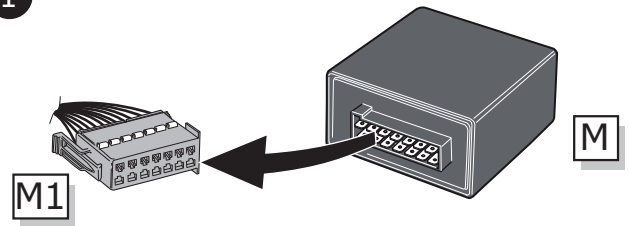
⚠ MAX = 21W



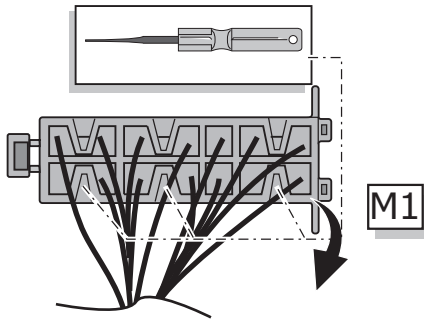
A



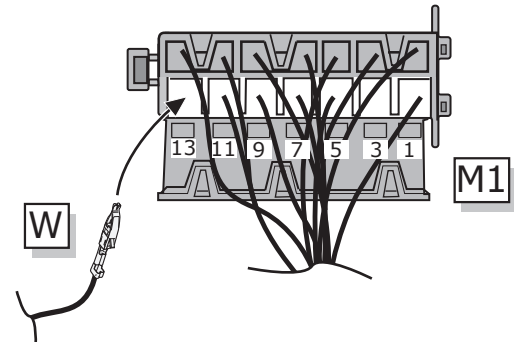
1



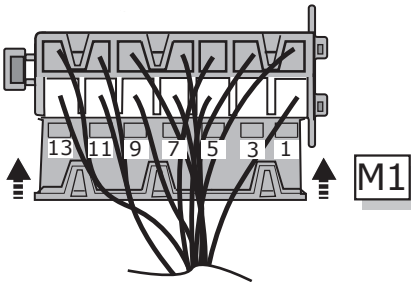
2



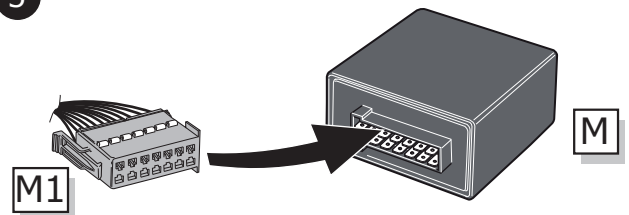
3



4



5



B

⚠ MAX = 21W

