



Part 3:

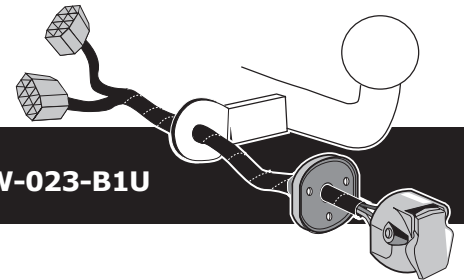
BMW X1 (F48) 10/2015-

BMW X3 (F25) 03/2014-

BMW X4 (F26) 07/2014-

BMW X5 (F15) 11/2013-

BMW X6 (F16) 12/2014-

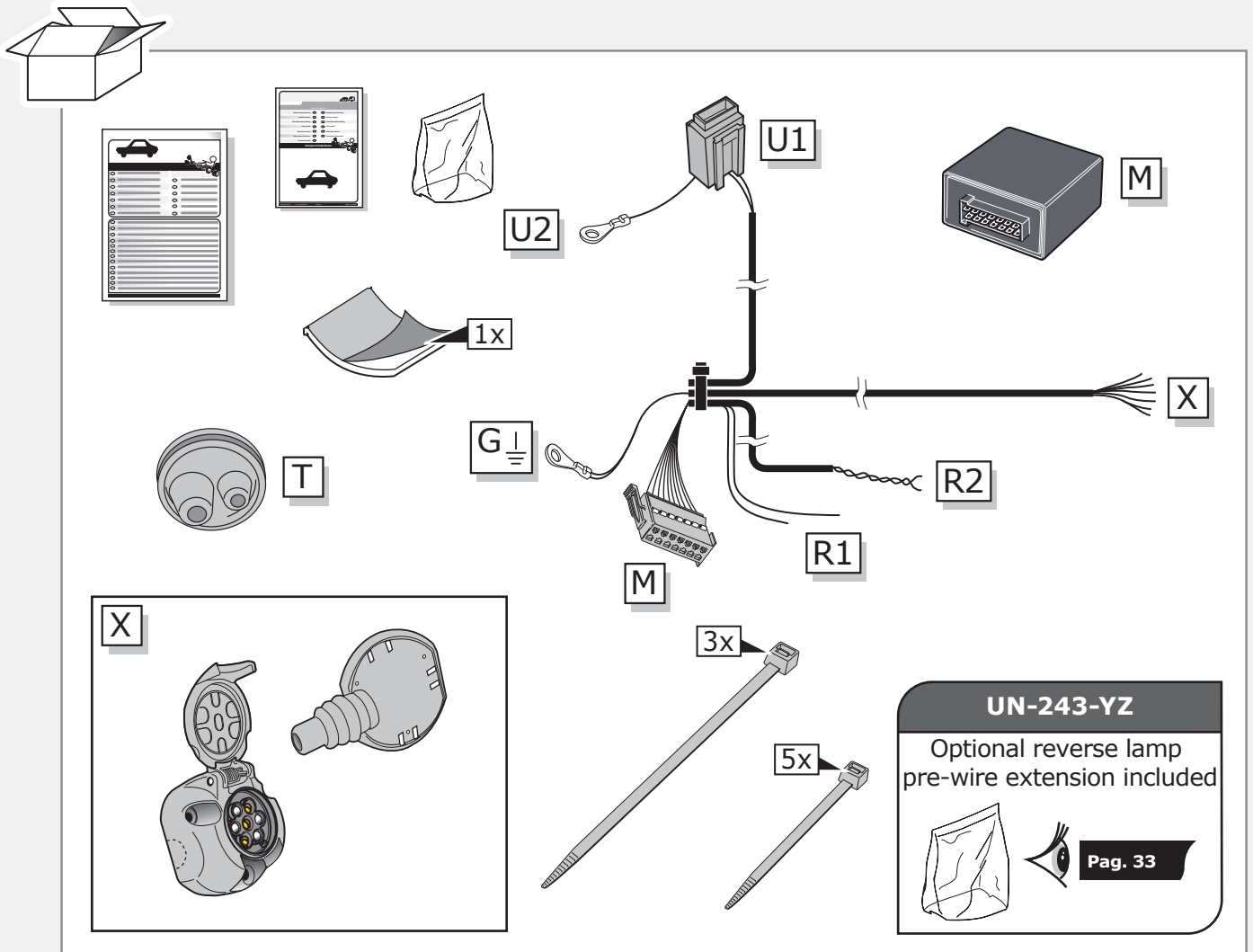


Partnr.: BW-023-B1U

- Fitting instructions electric wiring kit tow bar with 12-N socket up to DIN/ISO Norm 1724.
- We would expressly point out that assembly not carried out properly by a competent installer will result in cancellation of any right to damage compensation, in particular those arising by virtue of the product liability act.
- Contents of these kits and their fitting manuals are subject to alteration without notice, please ensure that these instructions are read and fully understood before commencing installation.
- Do not overload circuits; the maximum loads per connection are detailed in this manual.
- Attention! Before Installation, please read this manual carefully and inform your customer to consult the vehicle owners manual to check for any vehicle modifications required before towing.
- In the event of functional problems, troubleshooting must be limited to about 0.5 hours, contact the technical support:
ukts@ecs-electronics.com / 07440 202 052.

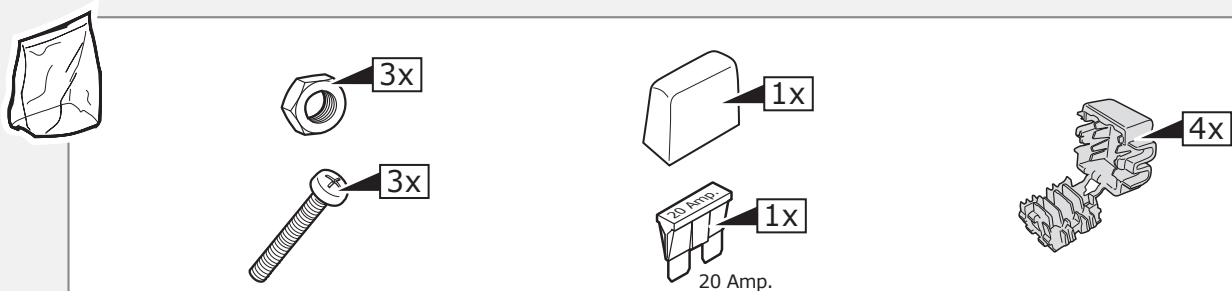


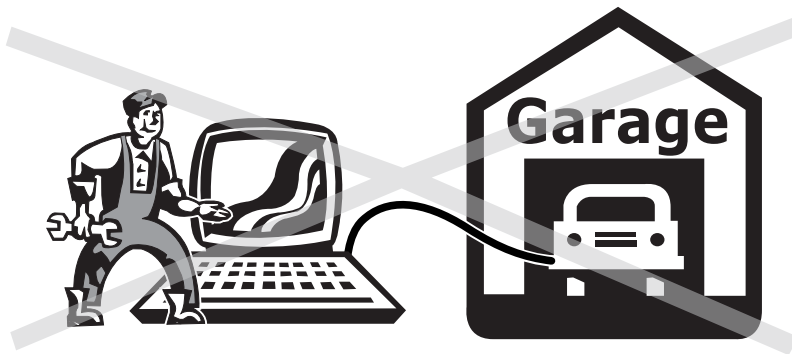
Part list



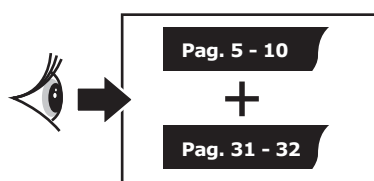
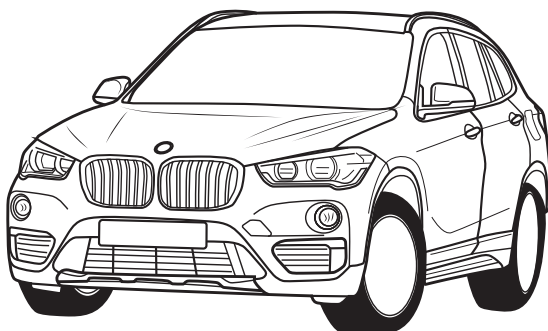
For X1 (F48).

Consult your supplier.

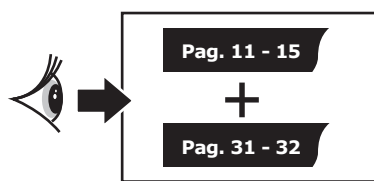
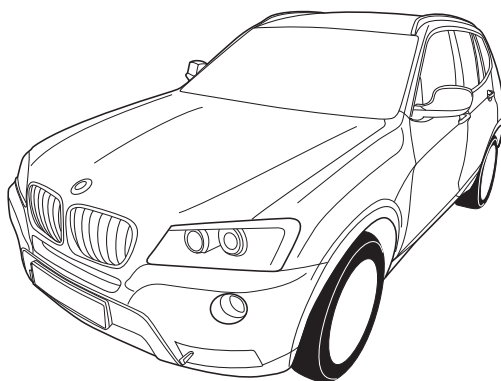




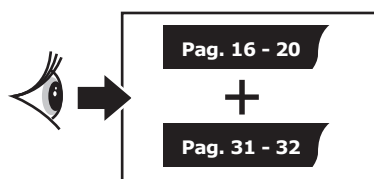
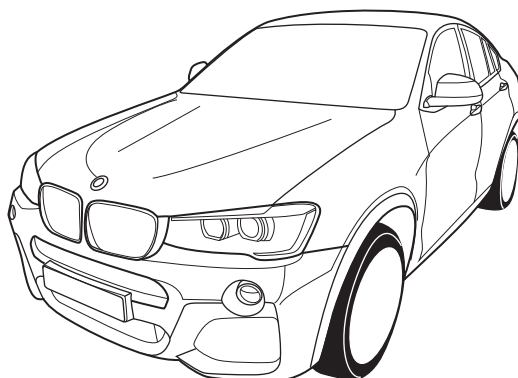
**BMW X1
(F48)
10/2015-**



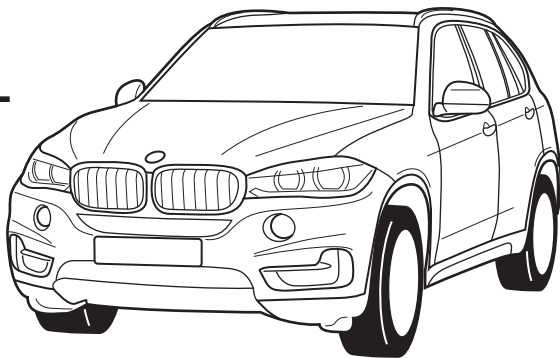
**BMW X3
(F25)
03/2014-**



**BMW X4
(F26)
07/2014-**

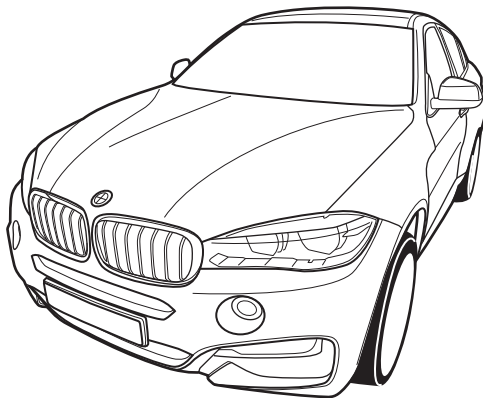


**BMW X5
(F15)
11/2013-**



Pag. 21 - 25
+
Pag. 31 - 32

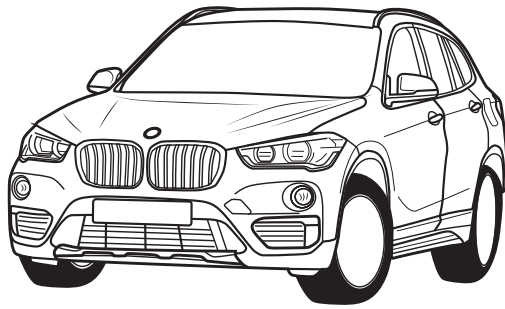
**BMW X6
(F16)
12/2014-**



Pag. 26 - 32

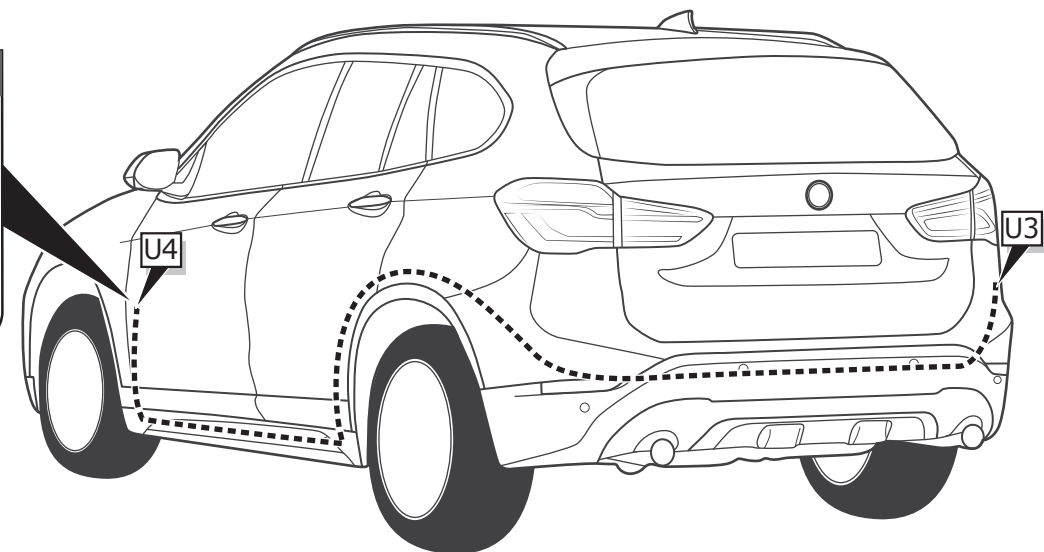
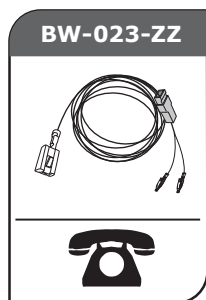
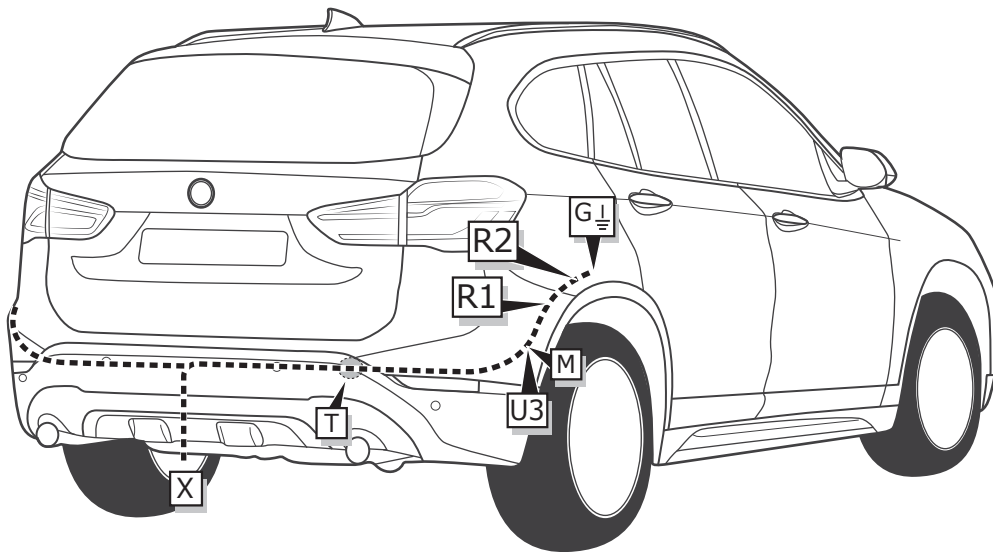
INFO

**BMW X1
(F48)
10/2015-**

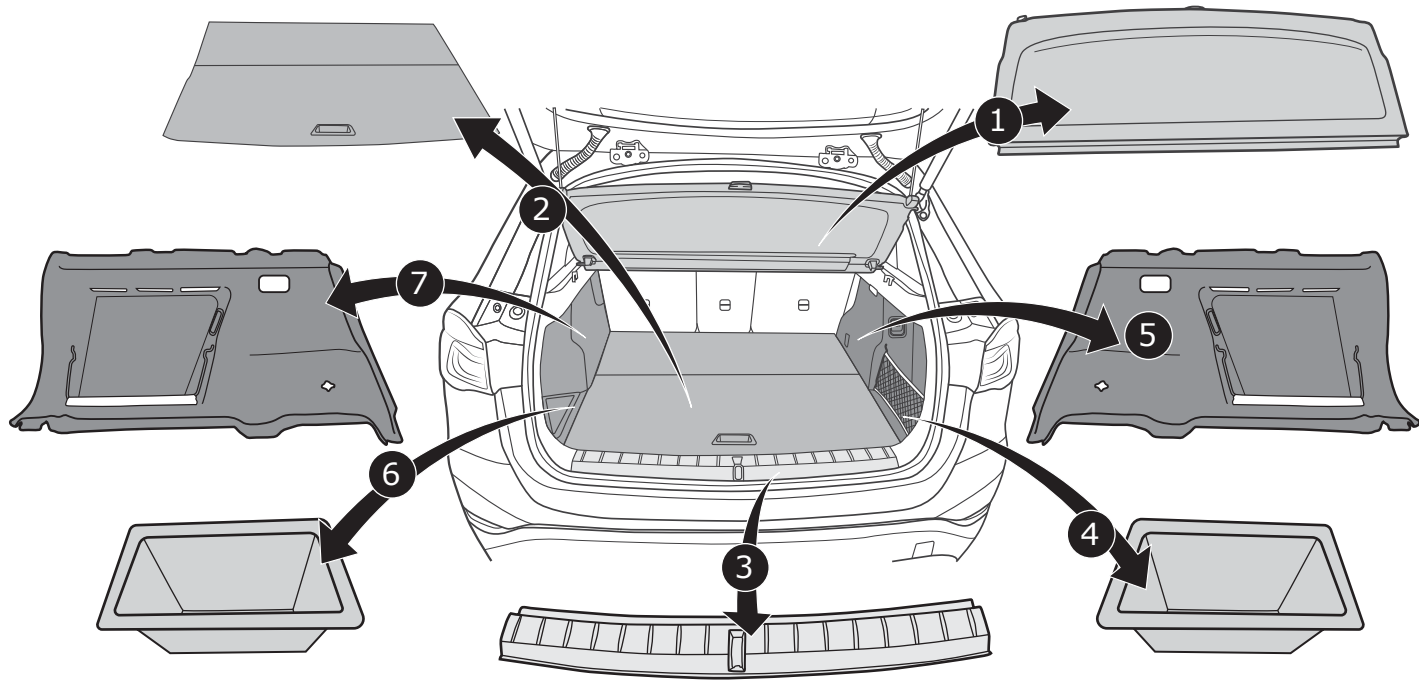


Pag. 5 - 10
+
Pag. 31 - 32

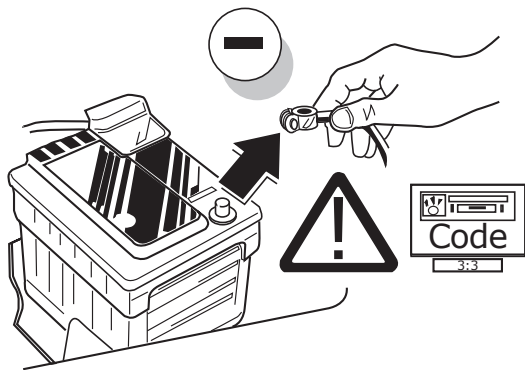
ROUTING



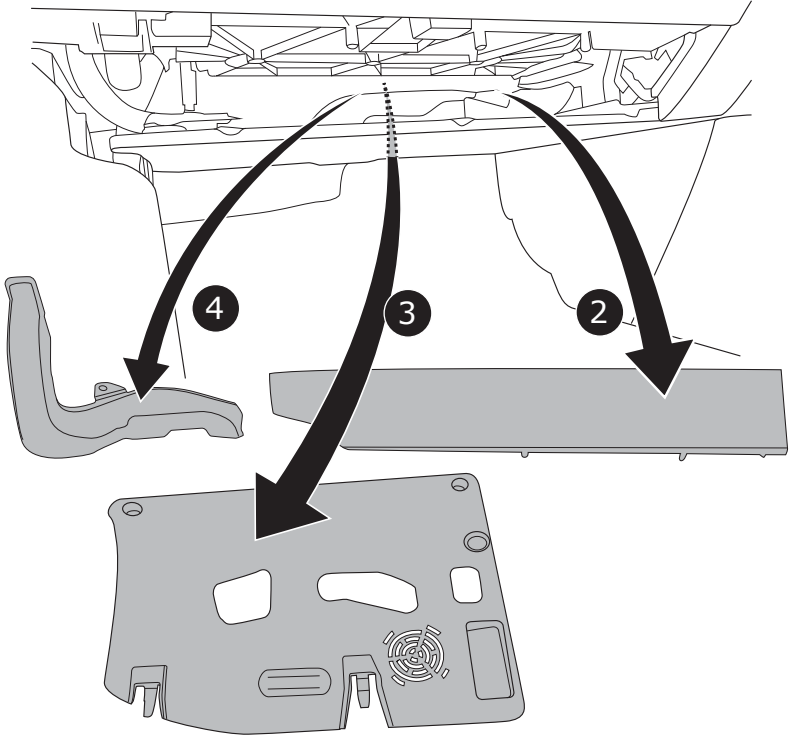
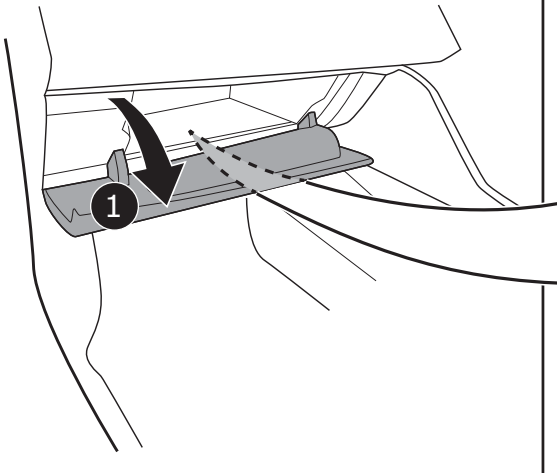
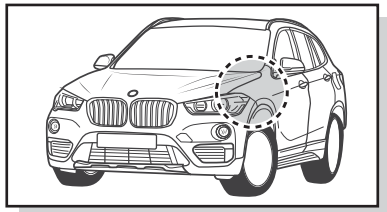
1



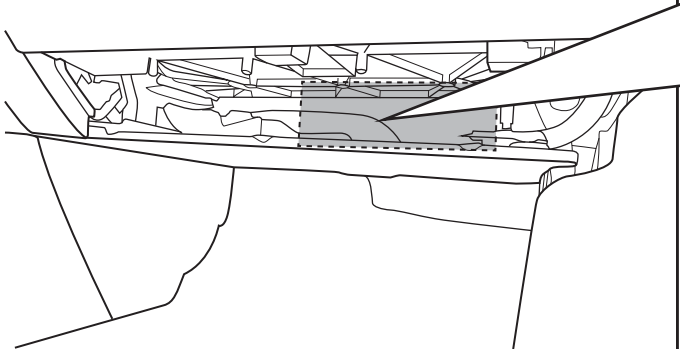
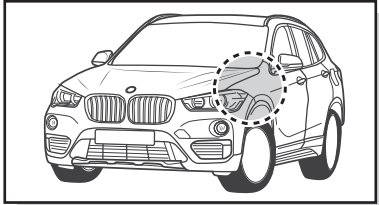
2



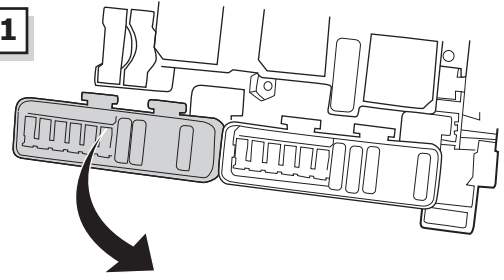
3



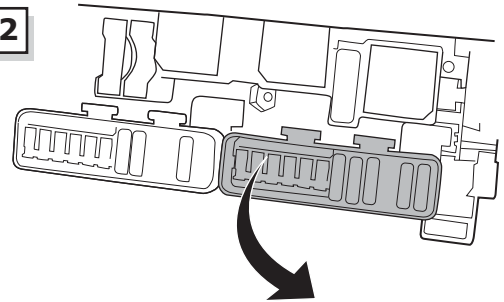
4



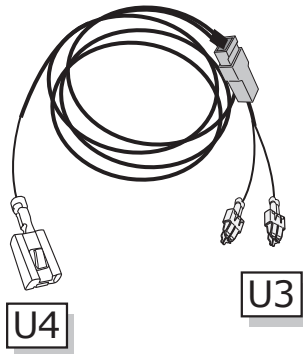
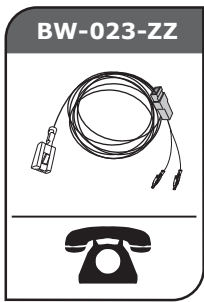
Option 1



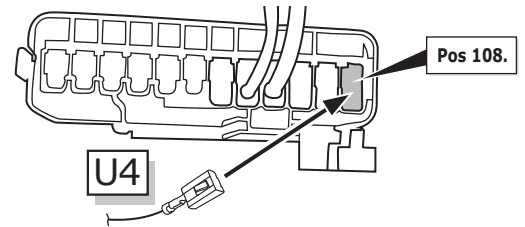
Option 2



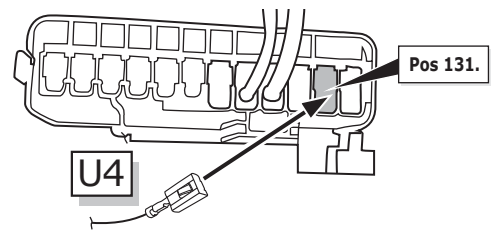
5



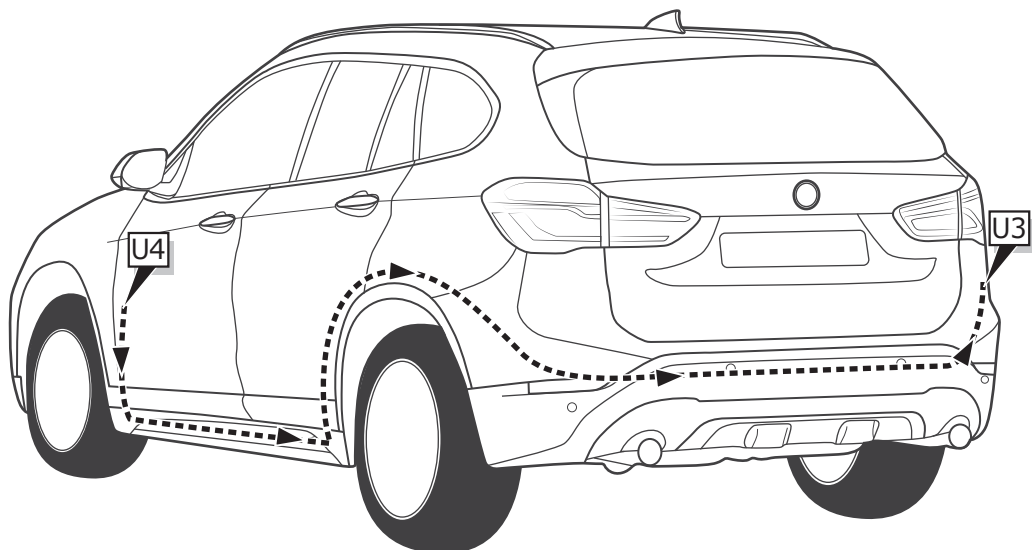
Option 1

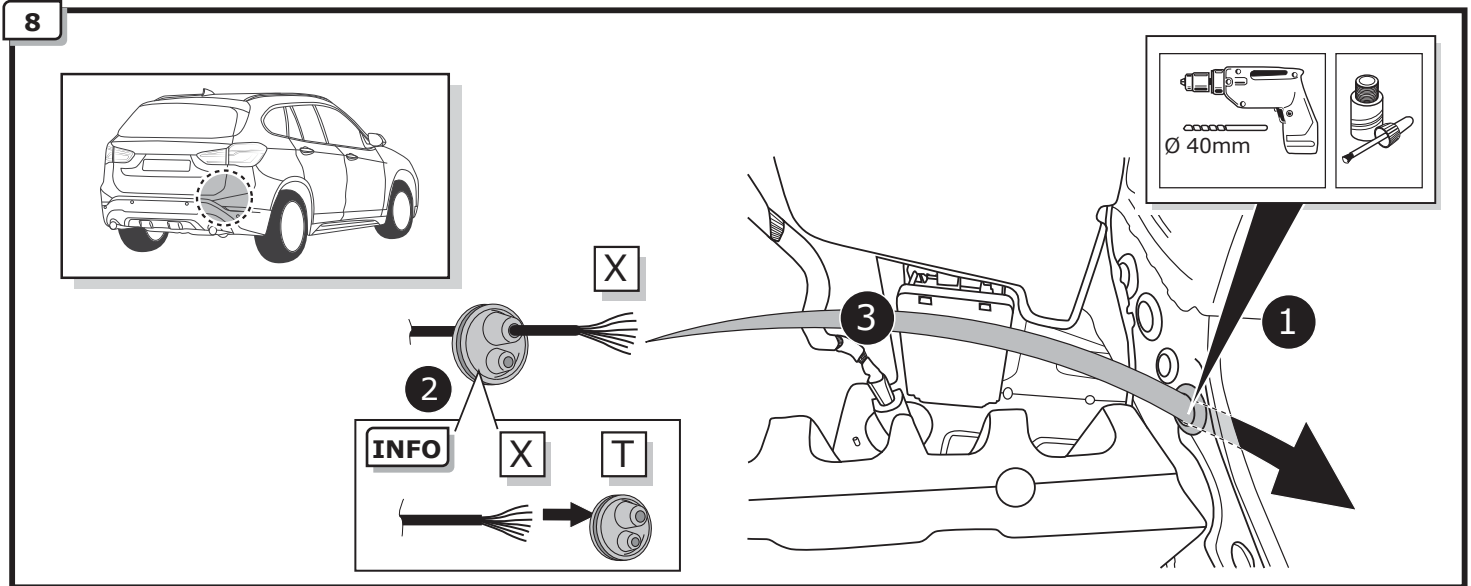
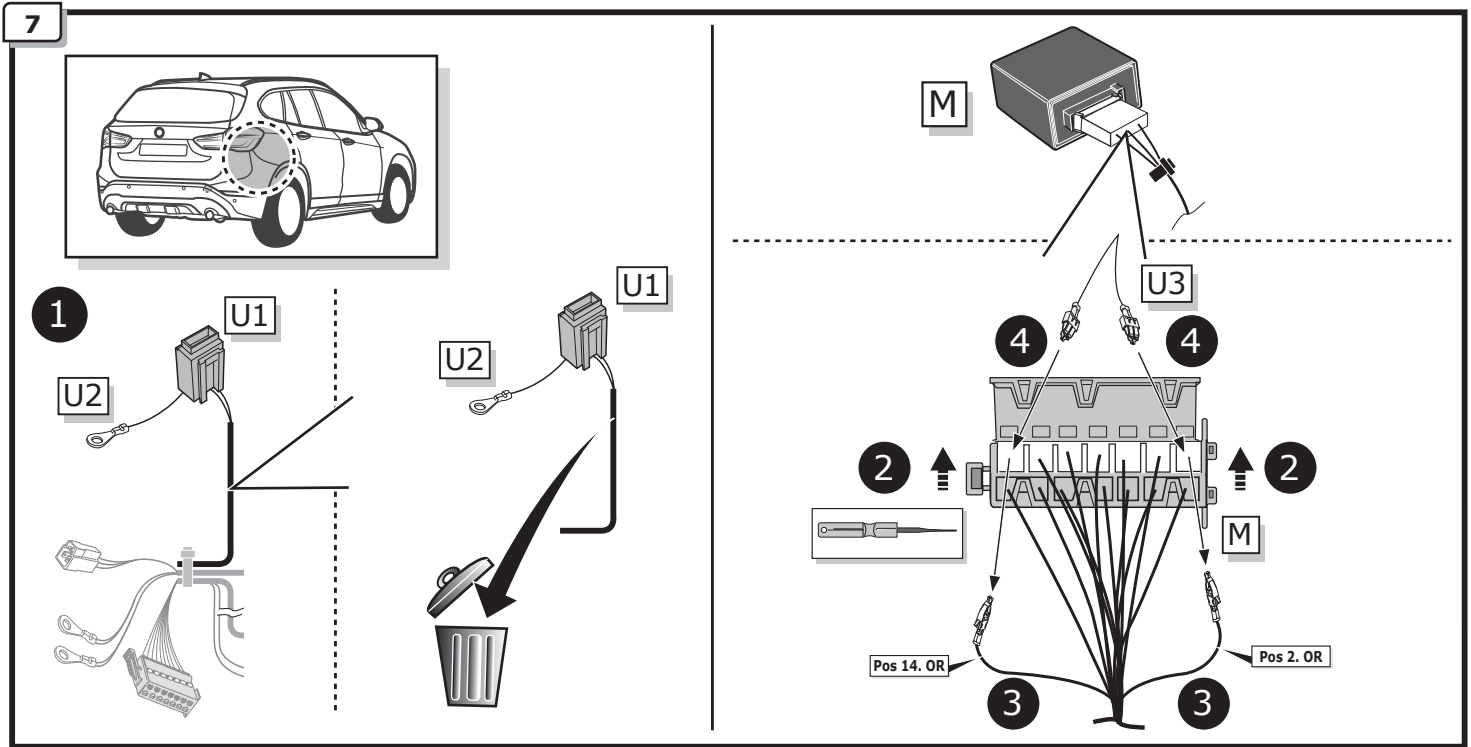


Option 2



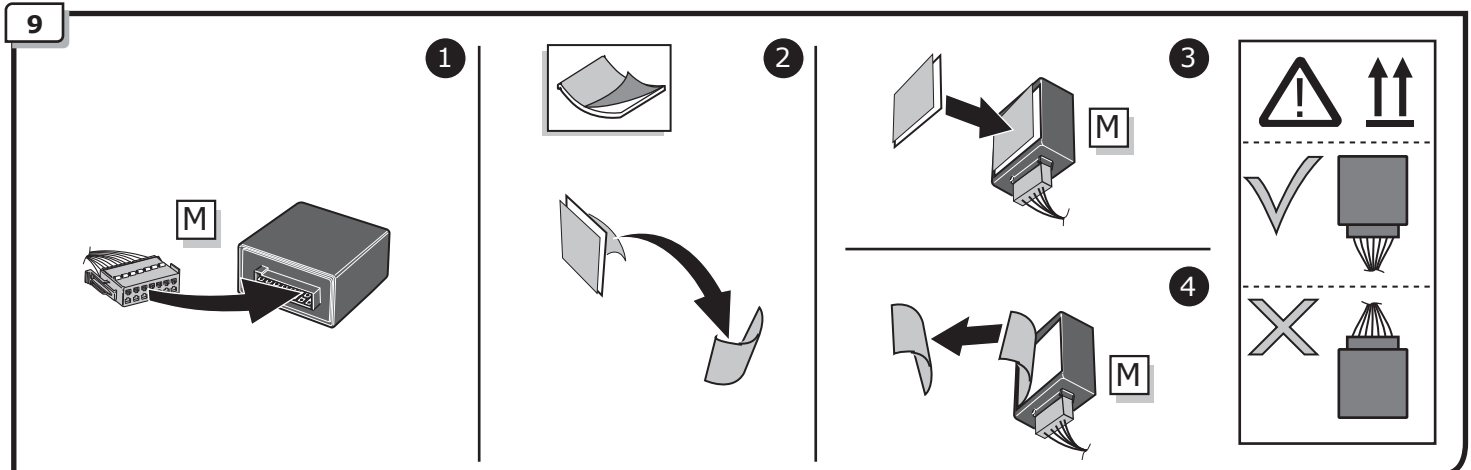
6



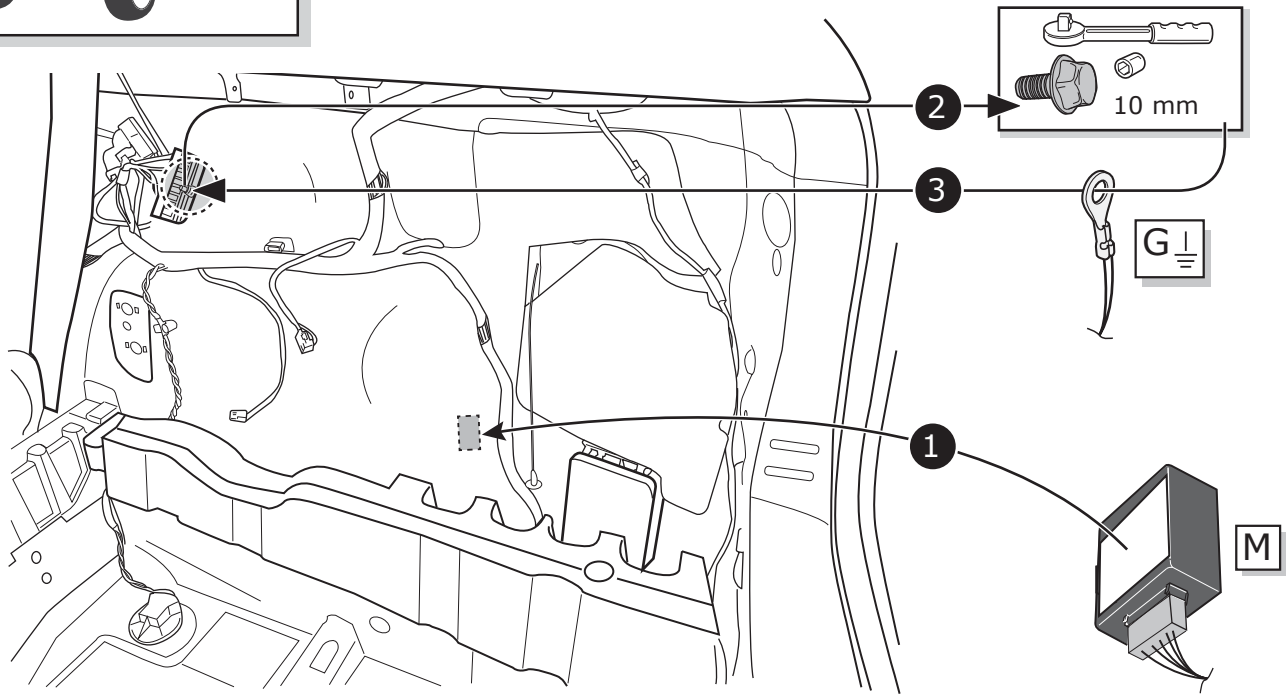
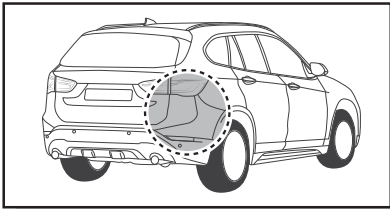


INFO

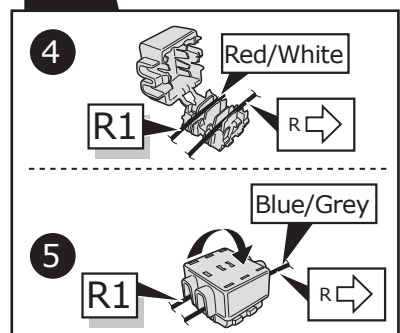
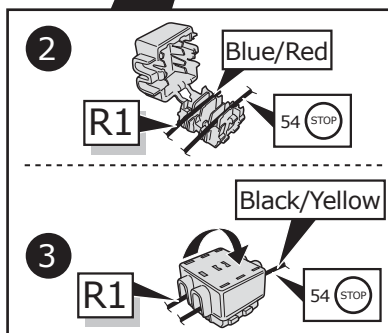
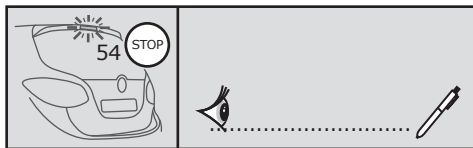
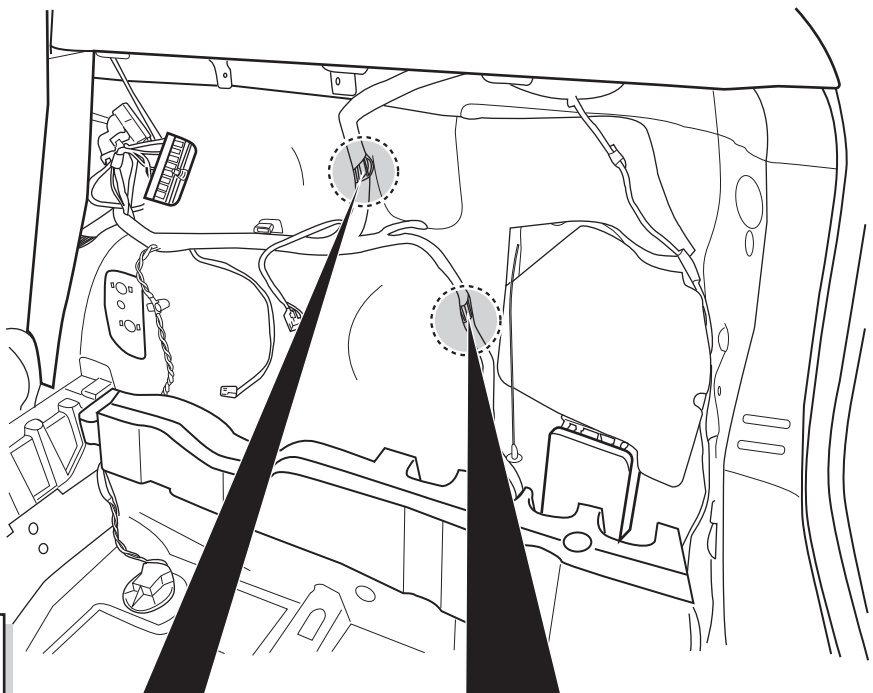
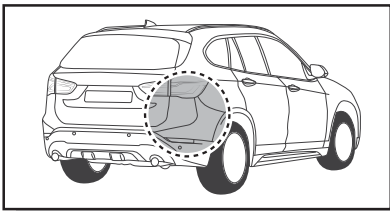
SOCKET CONNECTION  **Pag. 32**



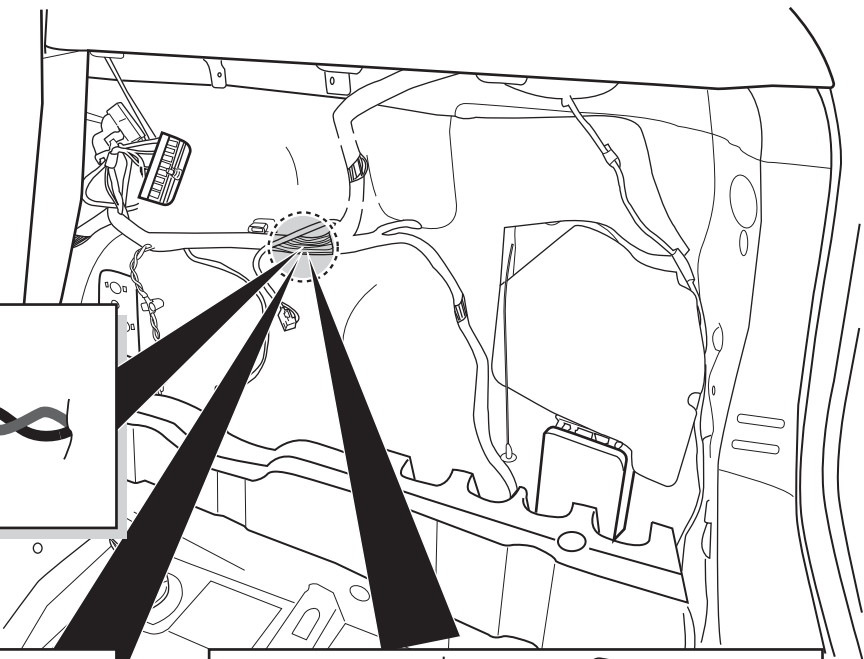
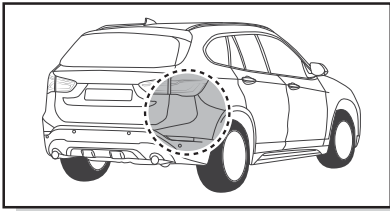
10



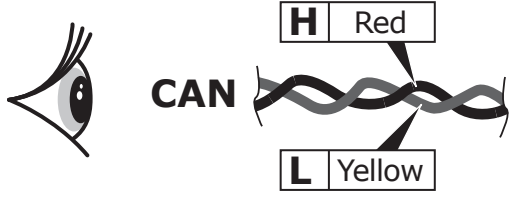
11



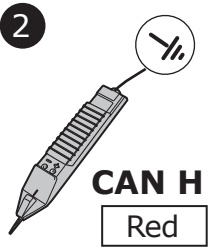
12



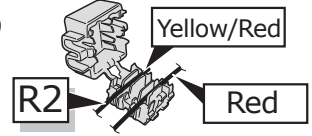
1



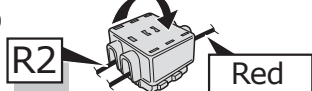
2



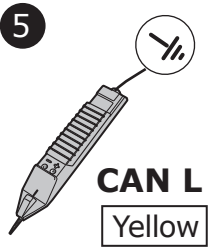
3



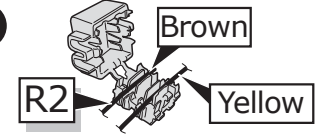
4



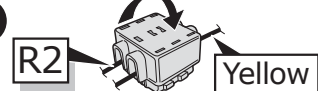
5



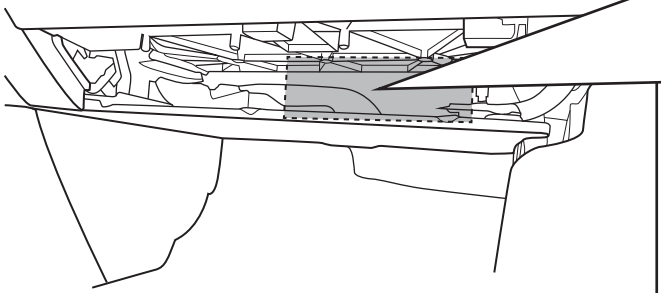
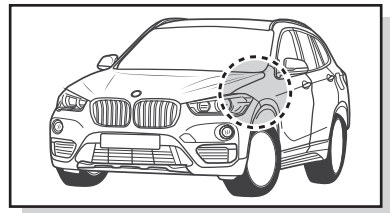
6



7

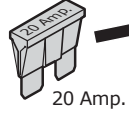


13



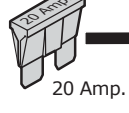
Option 1

Pos. 108

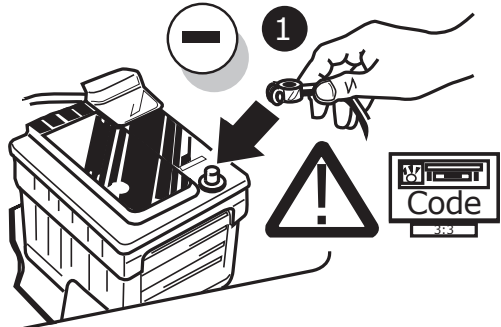


Option 2

Pos. 131



14

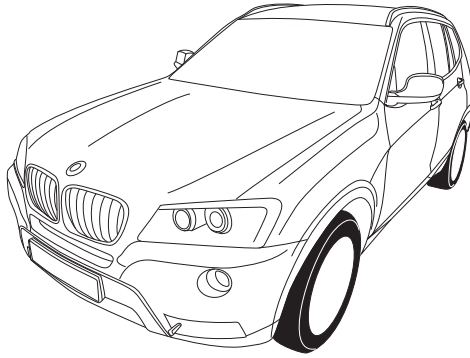


2



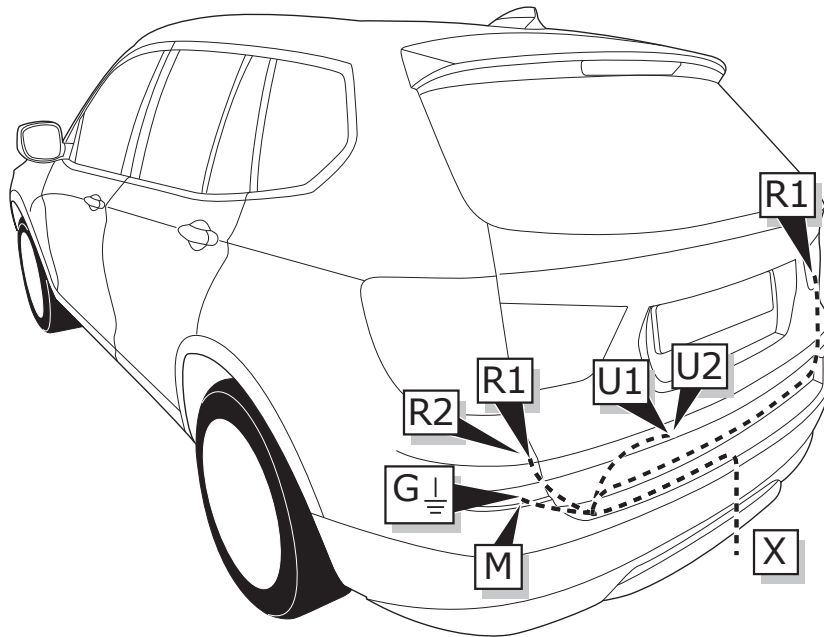
INFO

**BMW X3
(F25)
03/2014-**

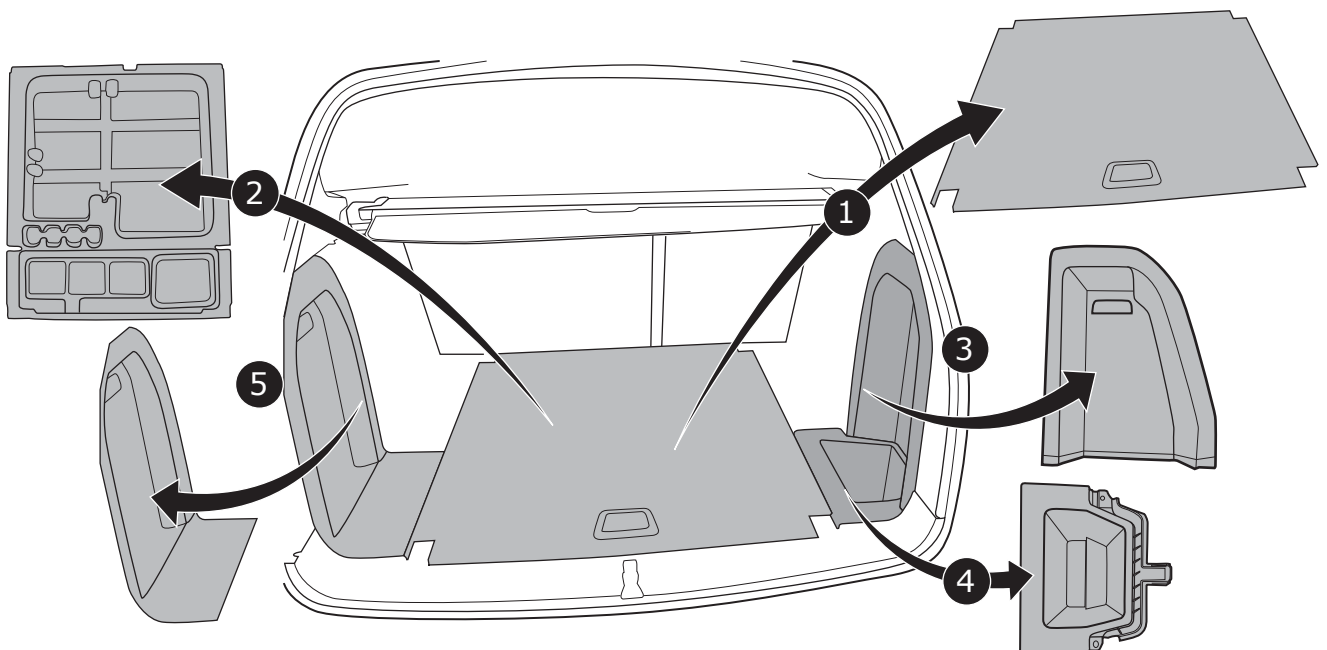


Pag. 11 - 15
+
Pag. 31 - 32

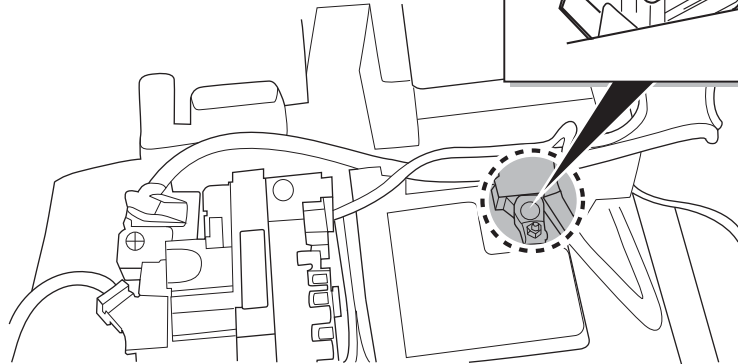
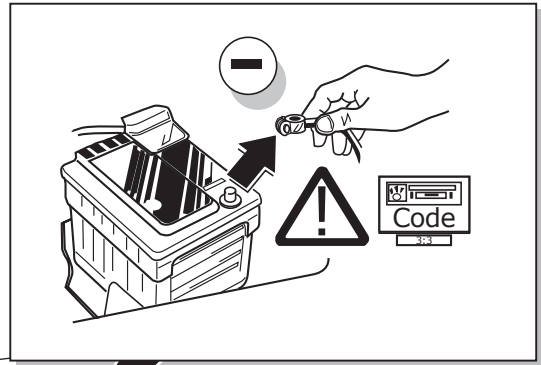
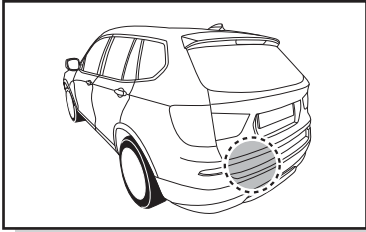
ROUTING



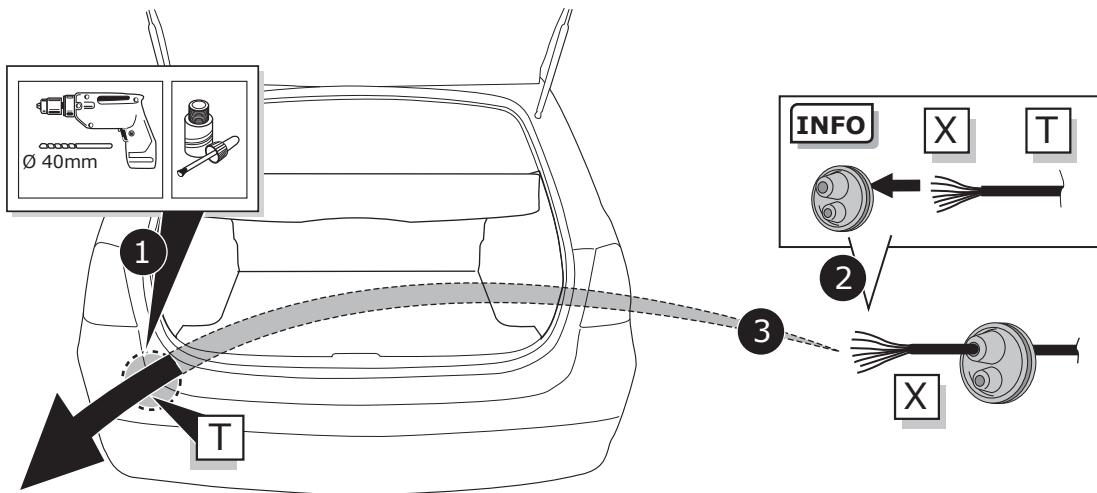
1



2



3



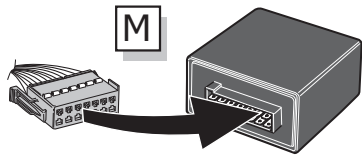
INFO

SOCKET CONNECTION

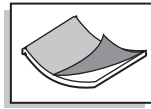


Pag. 32

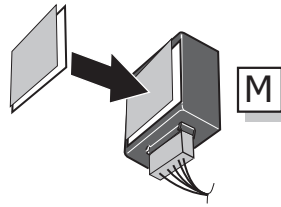
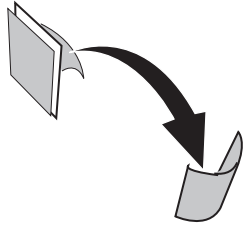
4



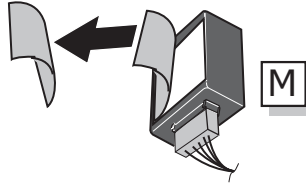
1



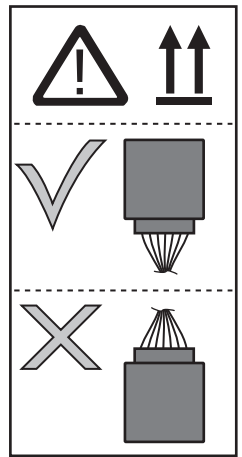
2



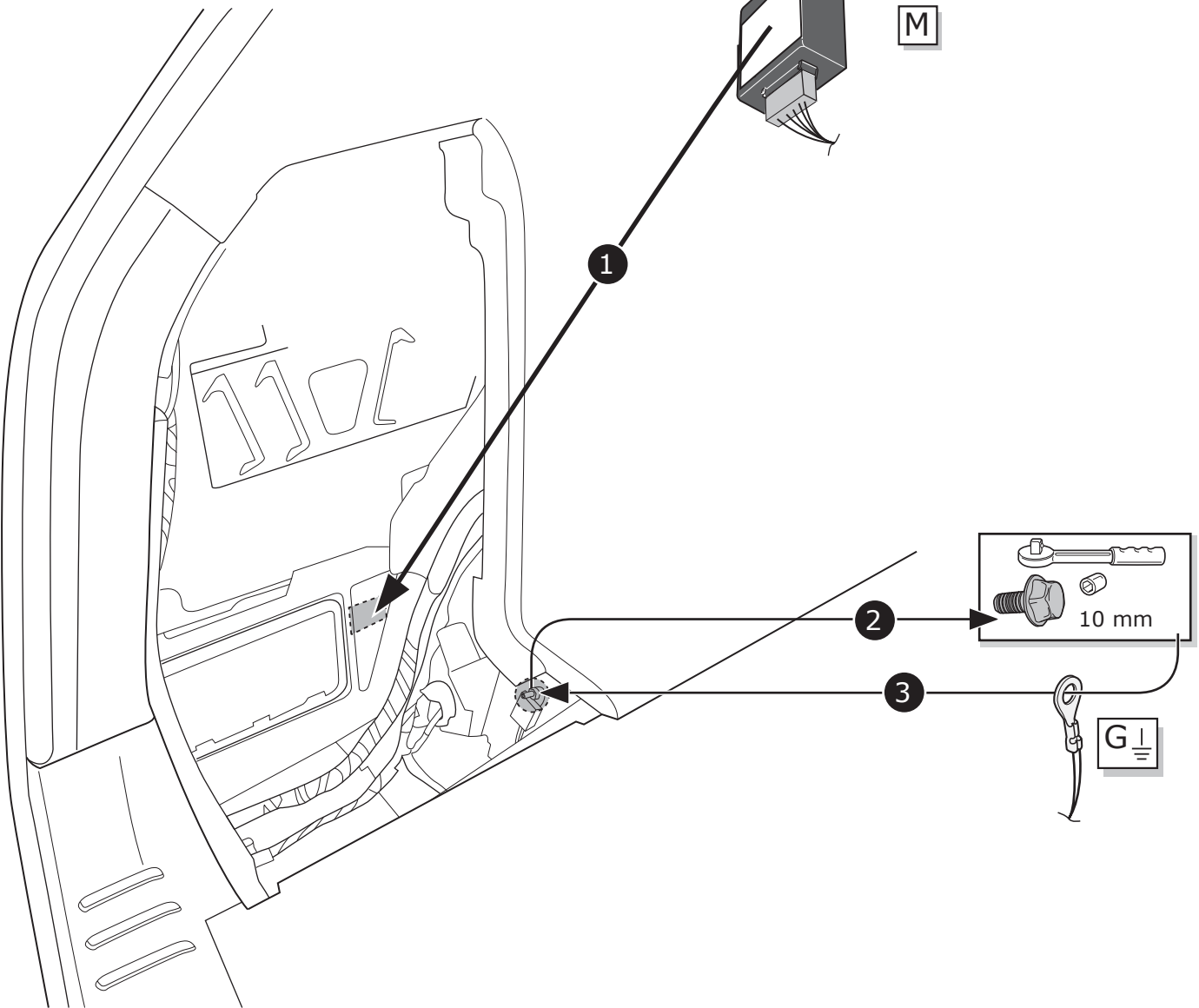
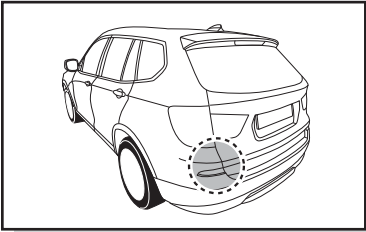
3



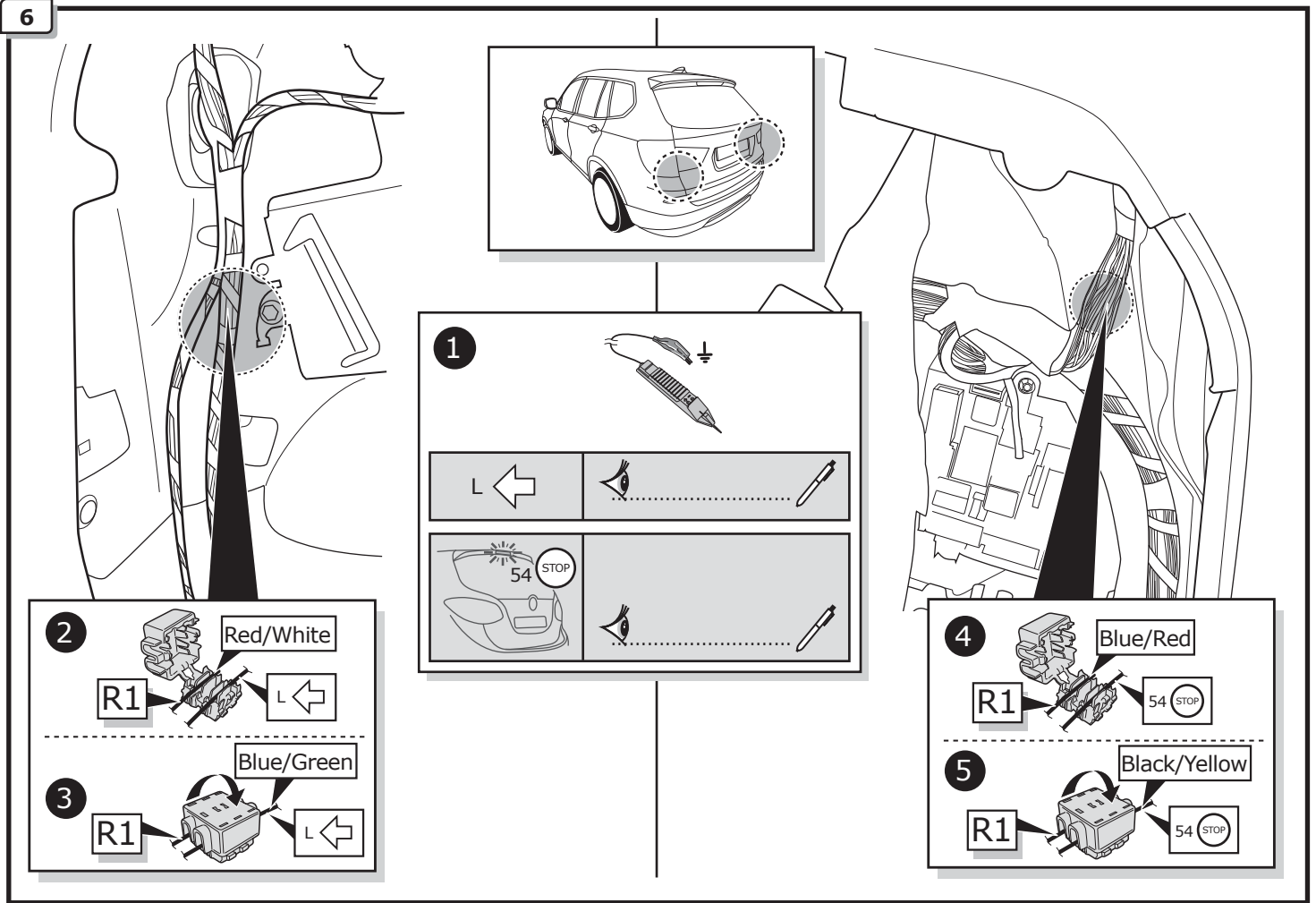
4



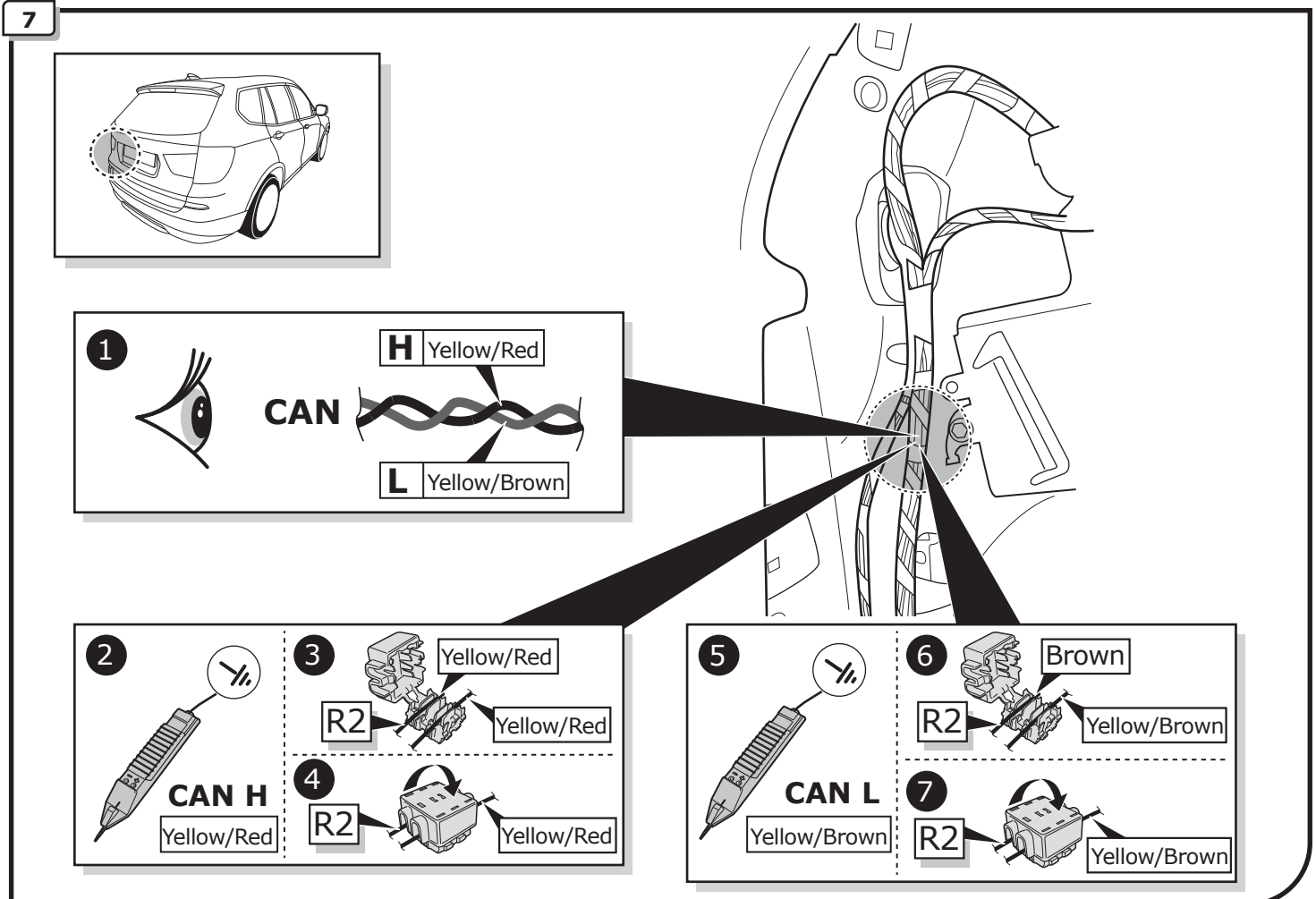
5



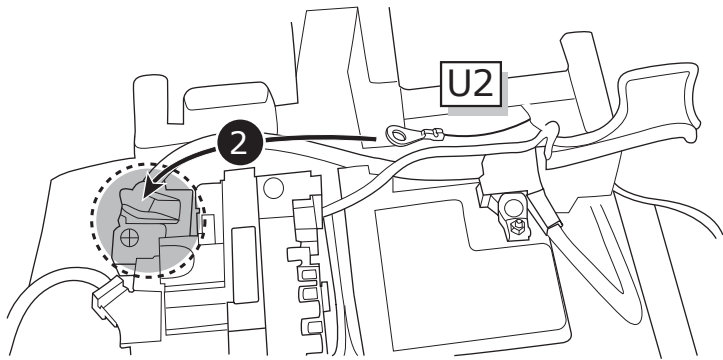
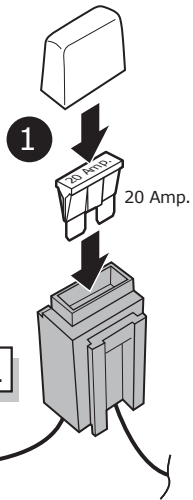
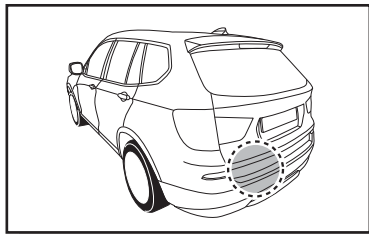
6



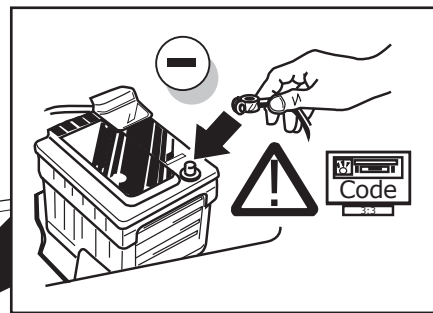
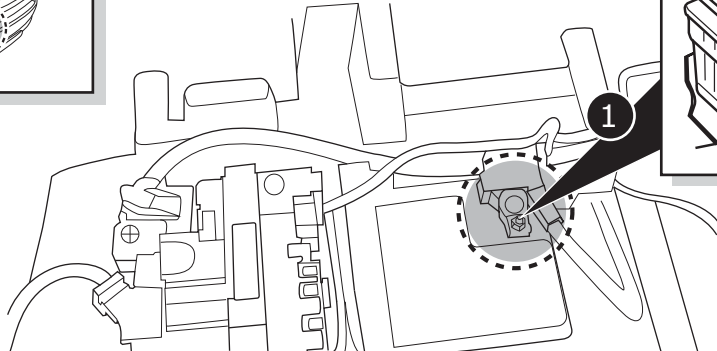
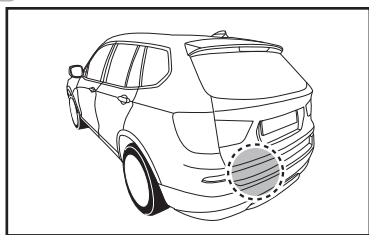
7



8

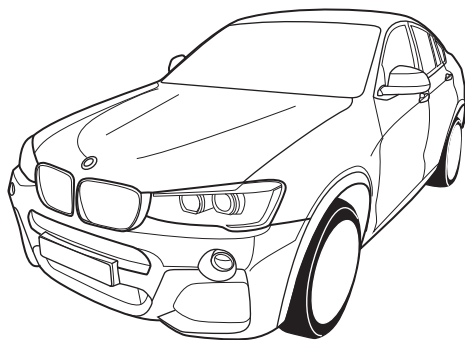


9



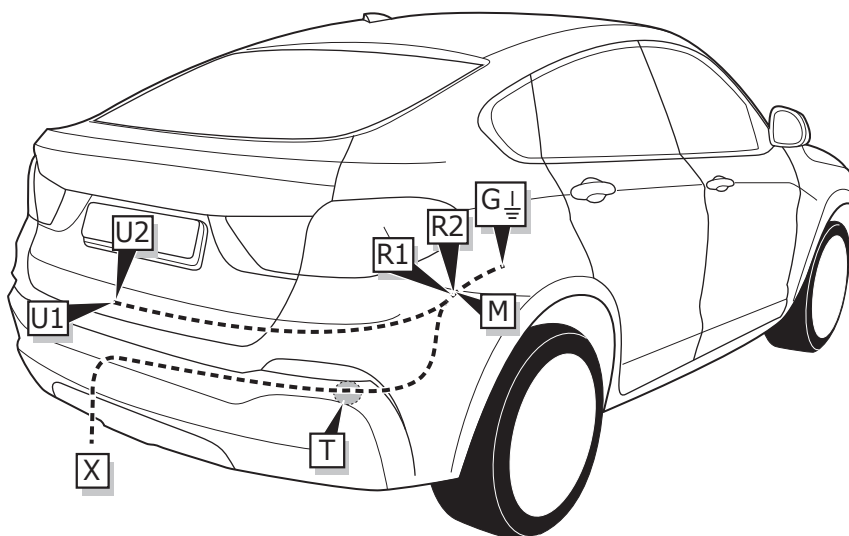
INFO

**BMW X4
(F26)
07/2014-**

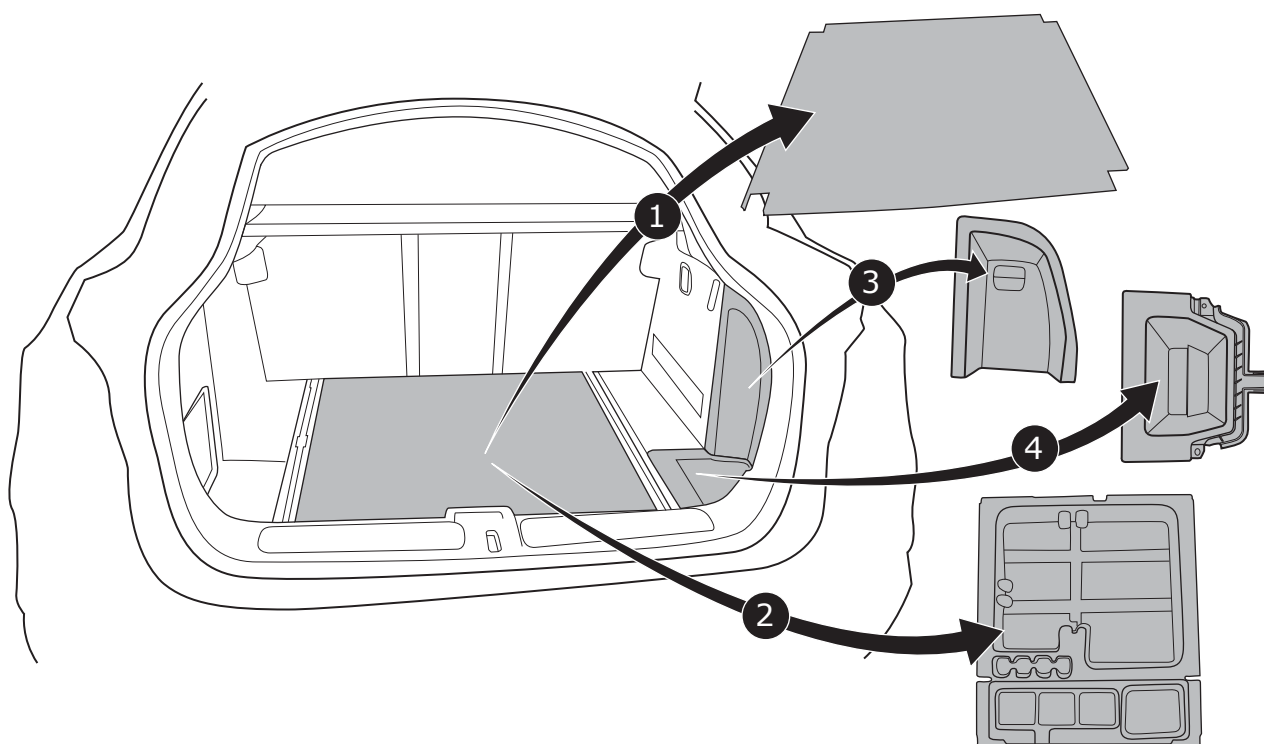


Pag. 16 - 20
+
Pag. 31 - 32

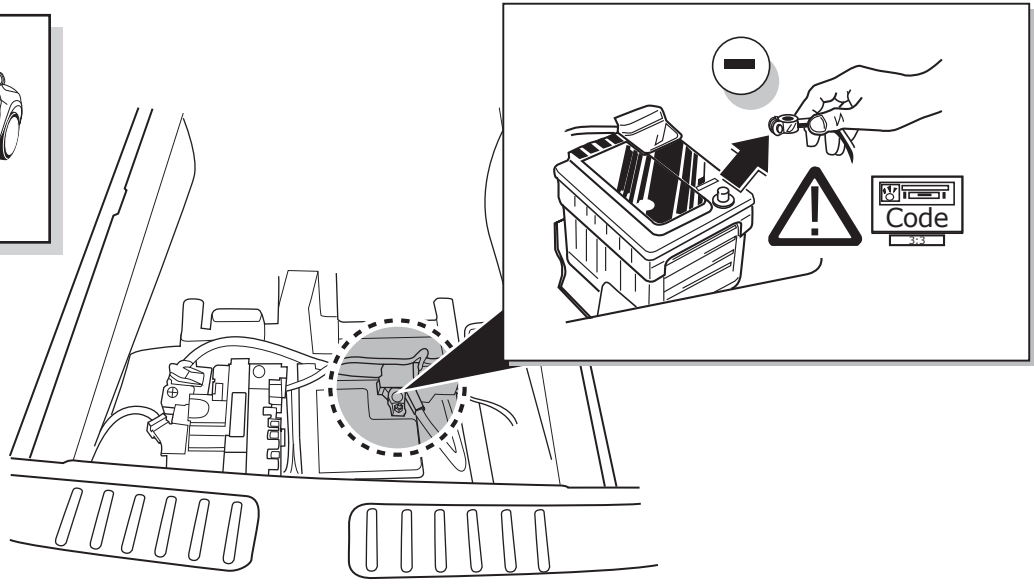
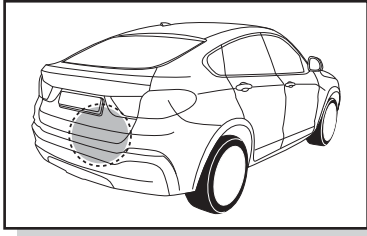
ROUTING



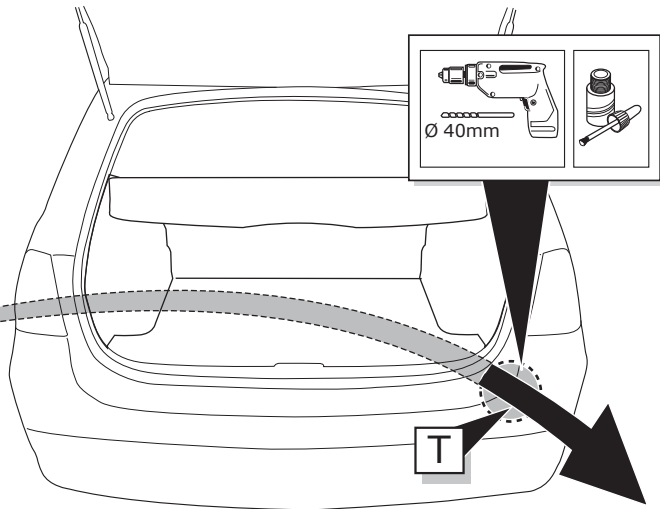
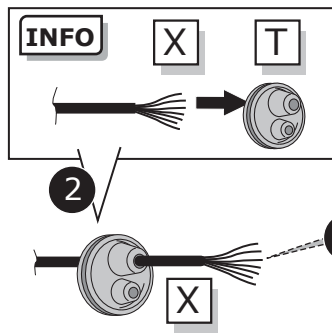
1



2



3



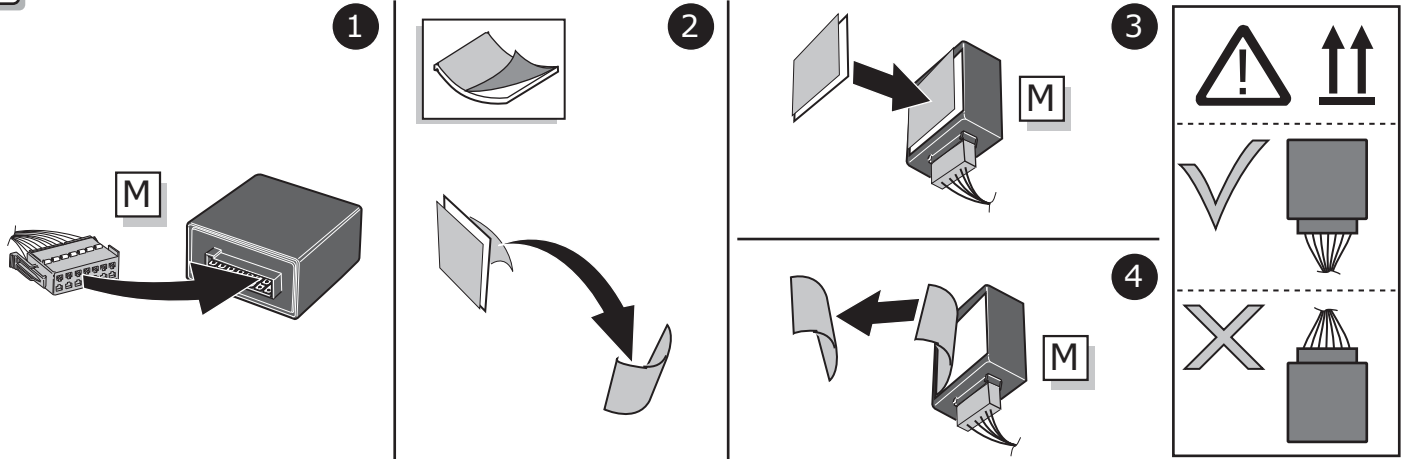
INFO

SOCKET CONNECTION

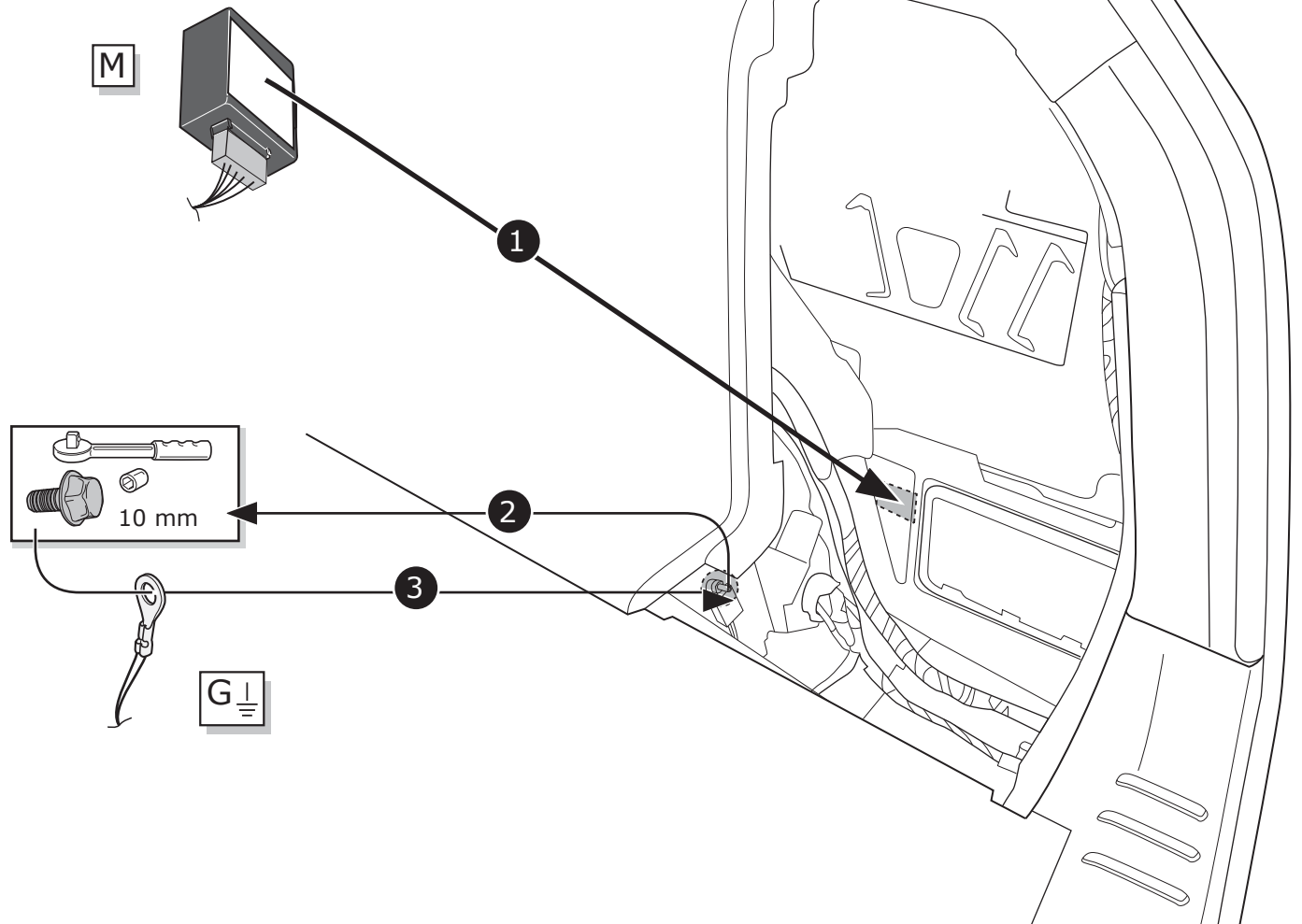
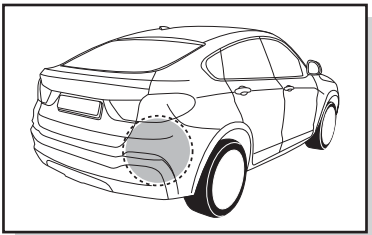


Pag. 32

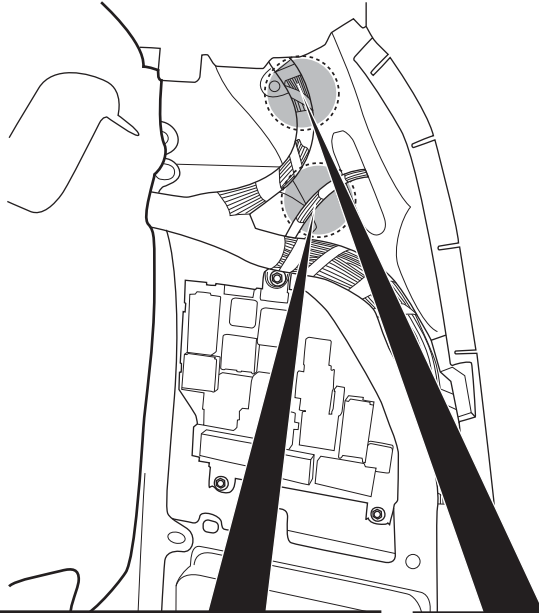
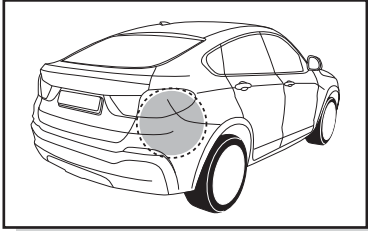
4



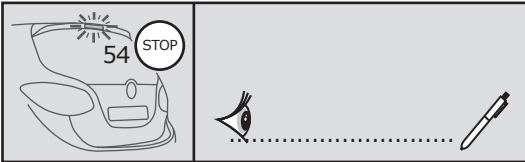
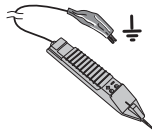
5



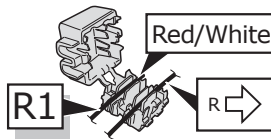
6



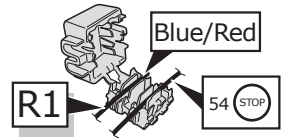
1



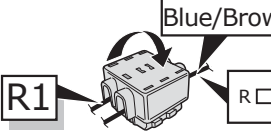
2



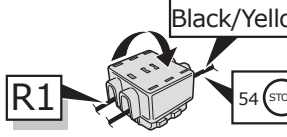
4



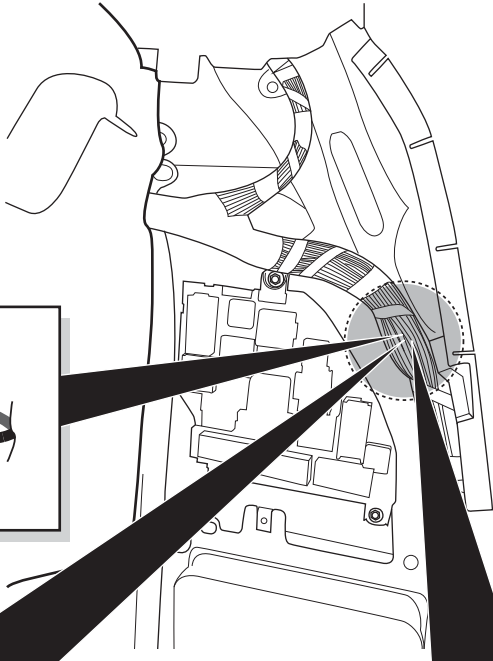
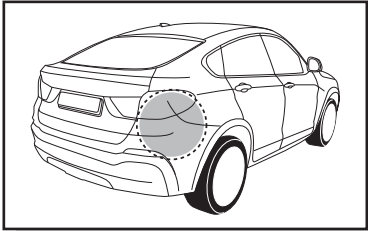
3



5



7



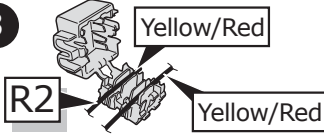
1



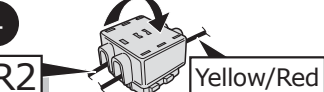
2



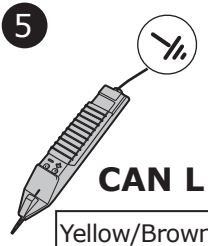
3



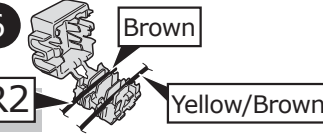
4



5



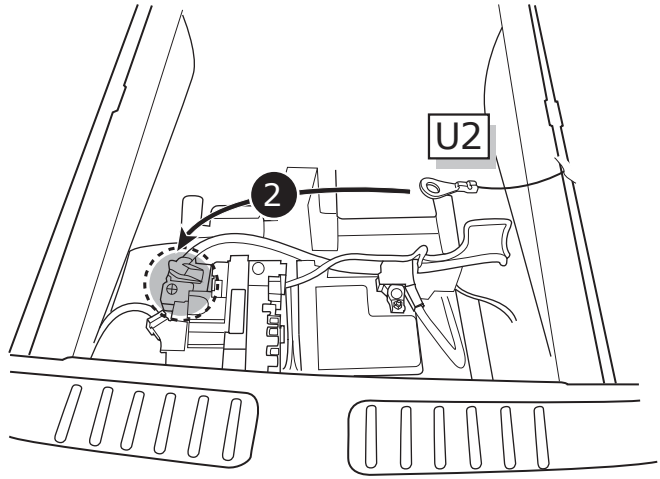
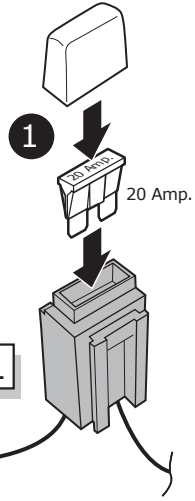
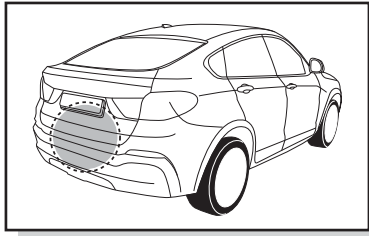
6



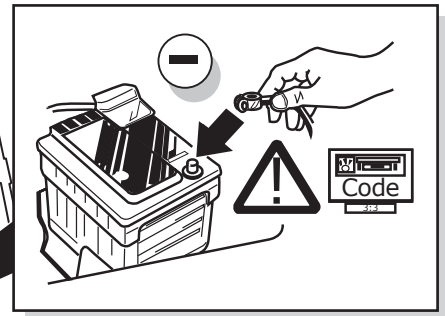
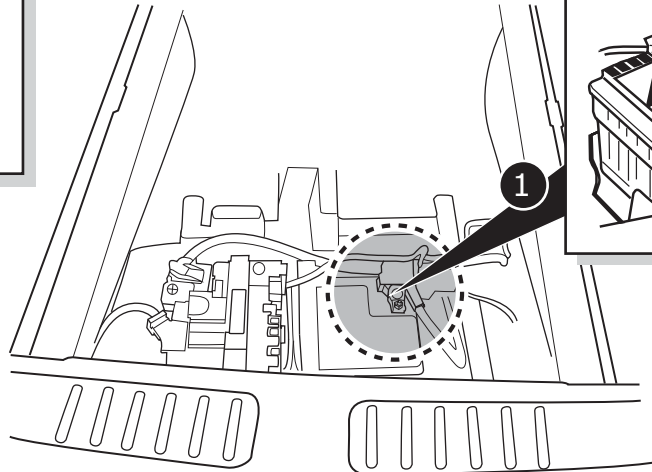
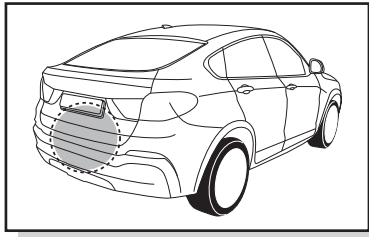
7



8

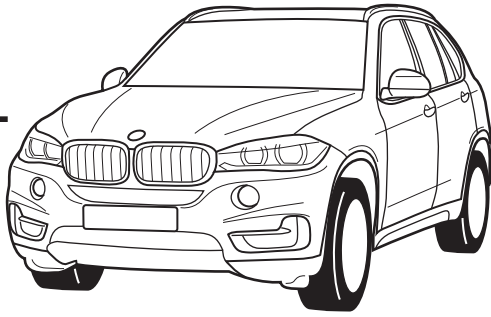


9



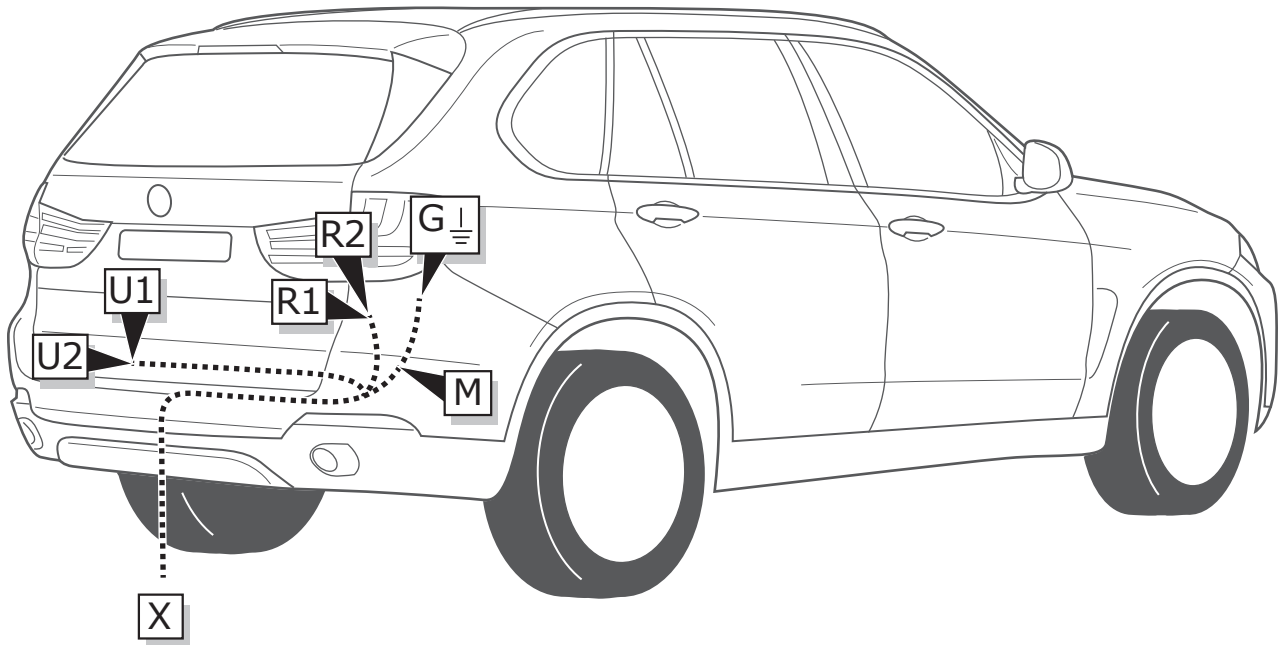
INFO

**BMW X5
(F15)
11/2013-**

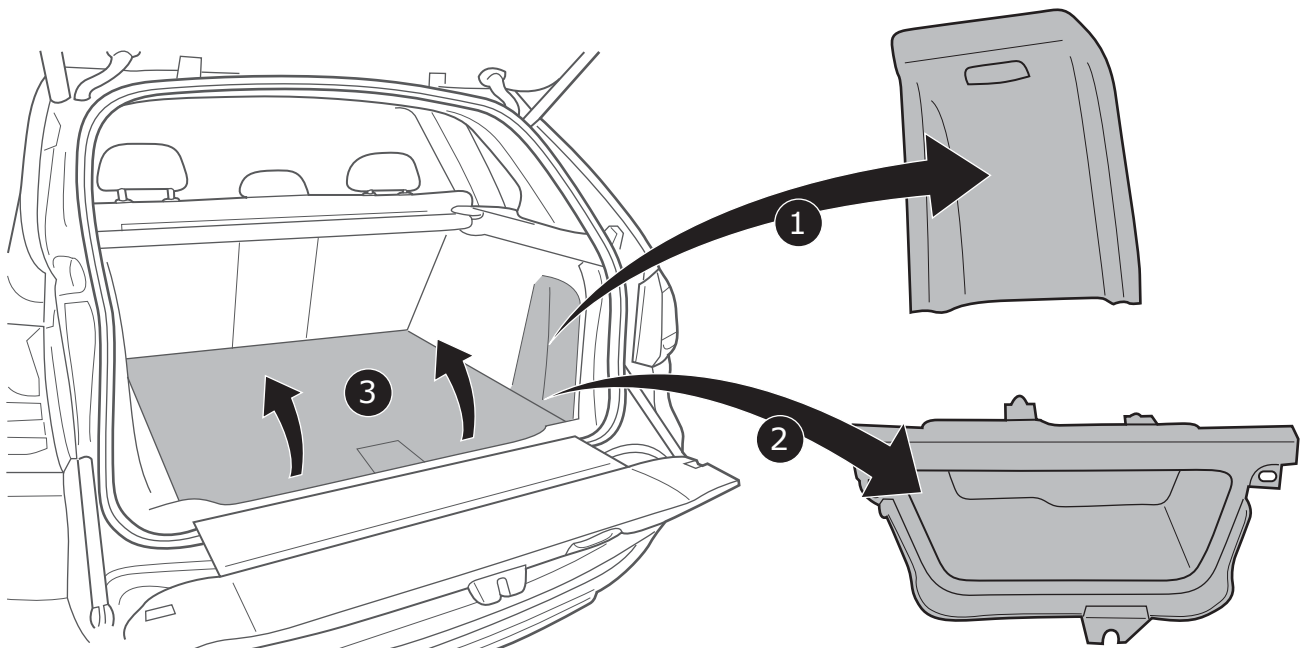


Pag. 21 - 25
+
Pag. 31 - 32

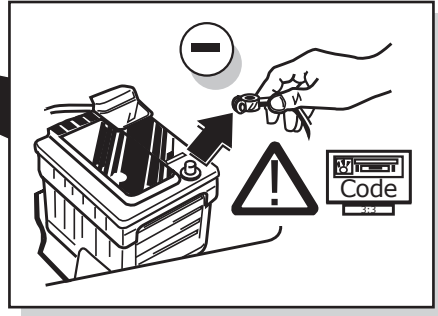
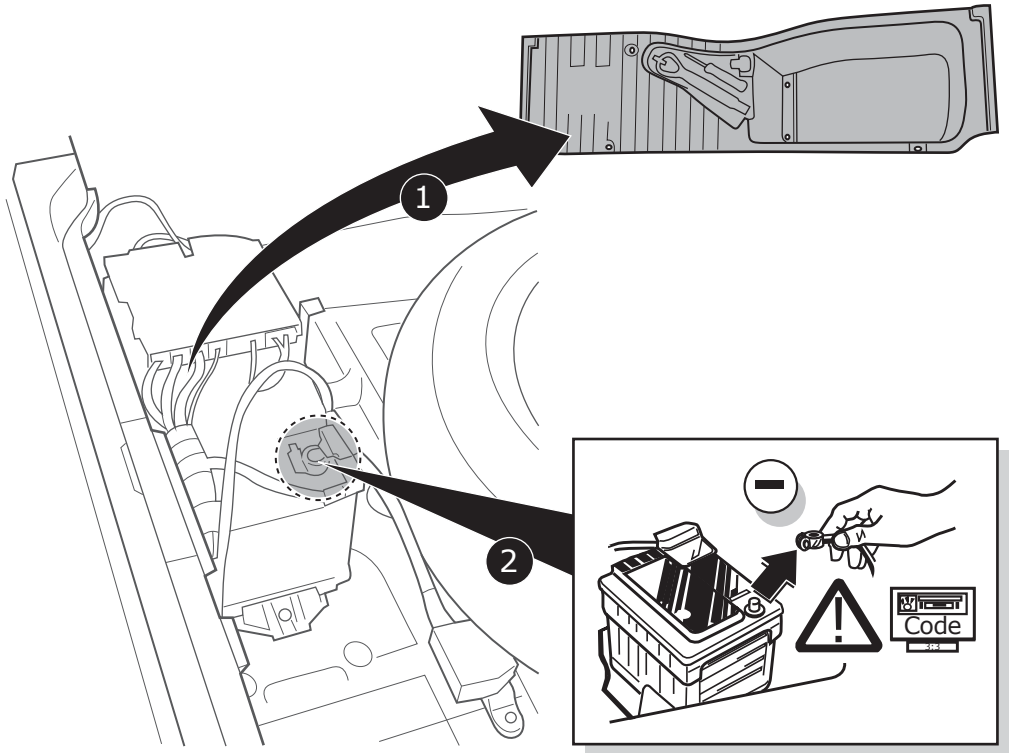
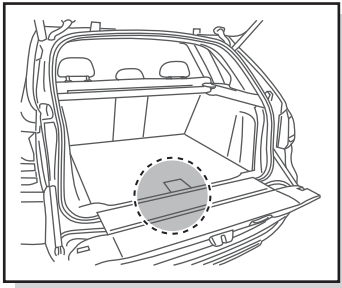
ROUTING



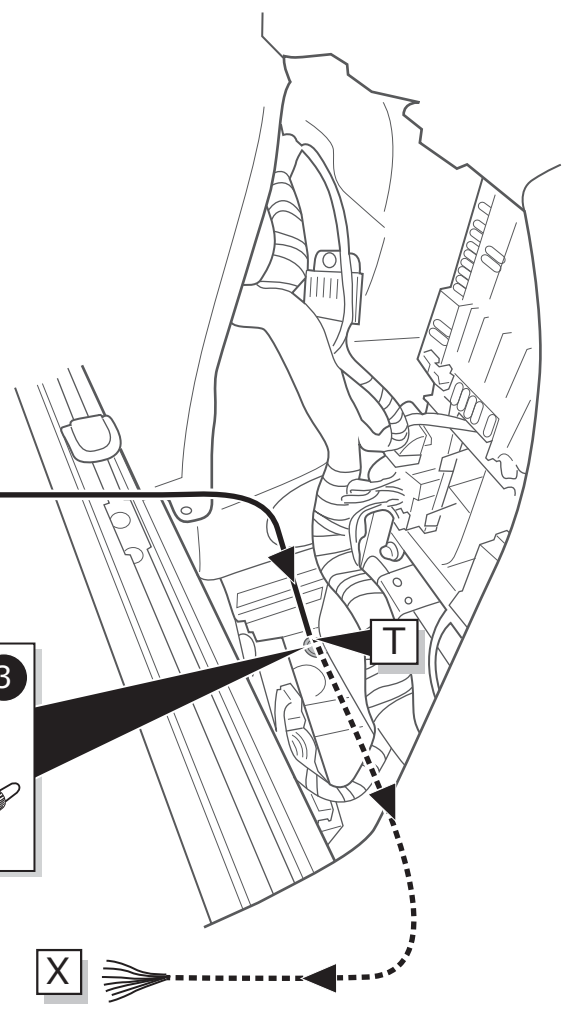
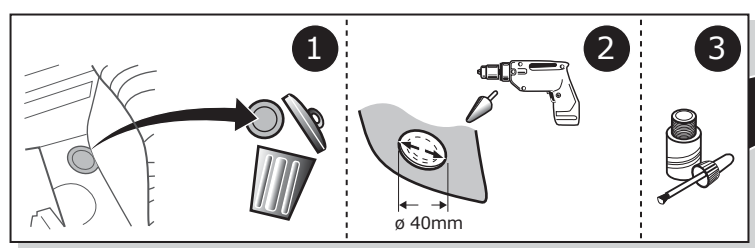
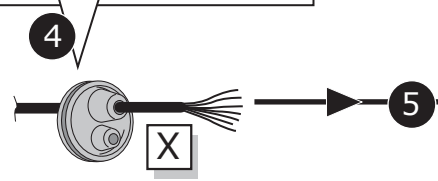
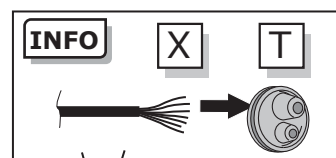
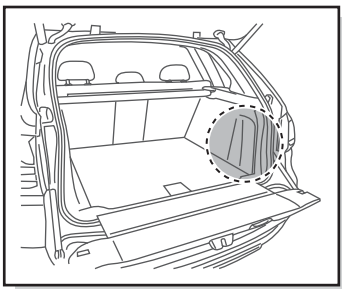
1



2

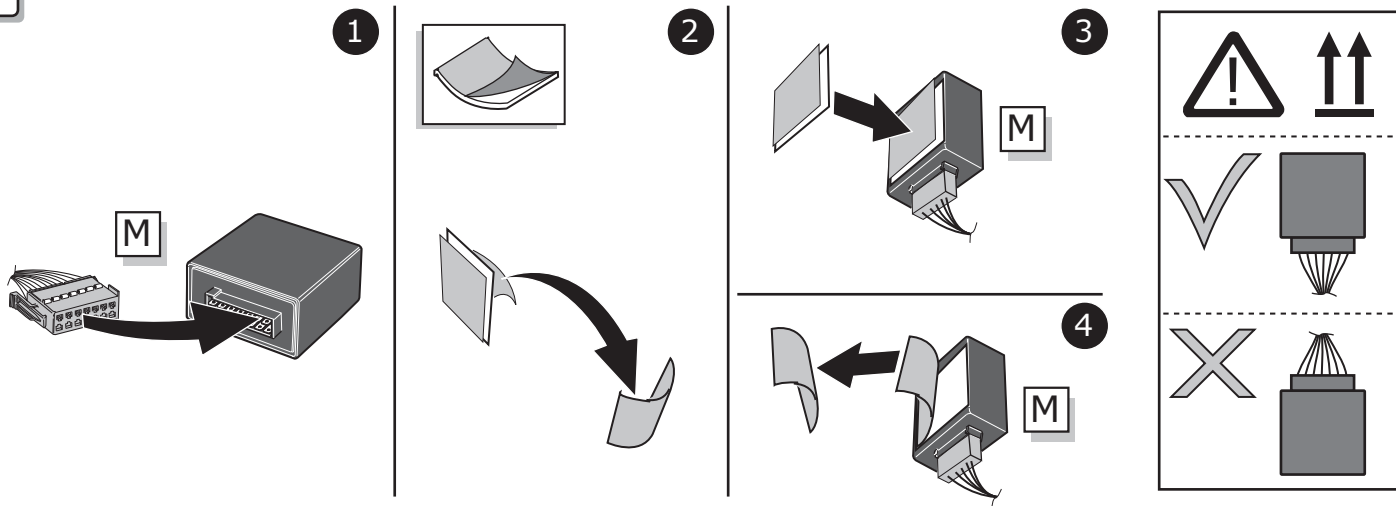


3

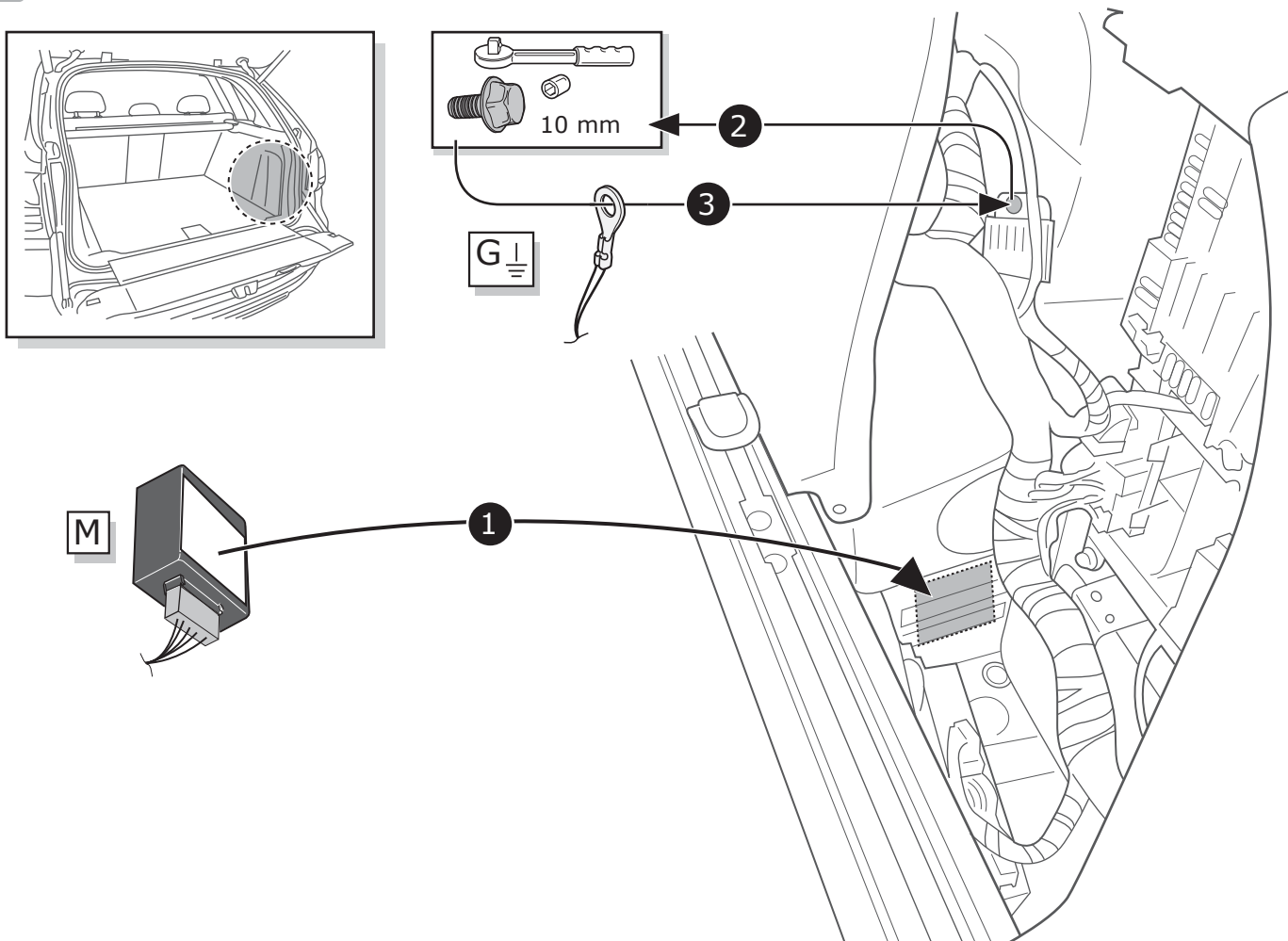


SOCKET CONNECTION

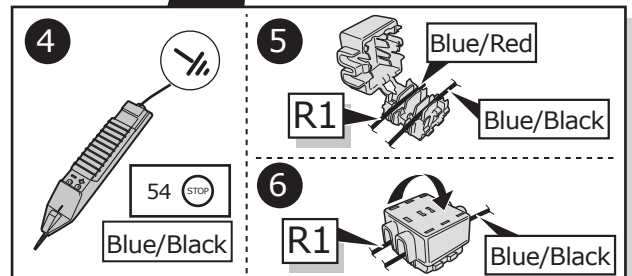
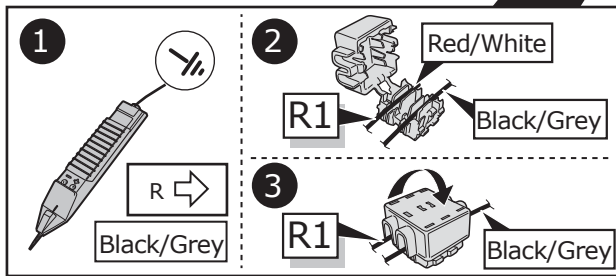
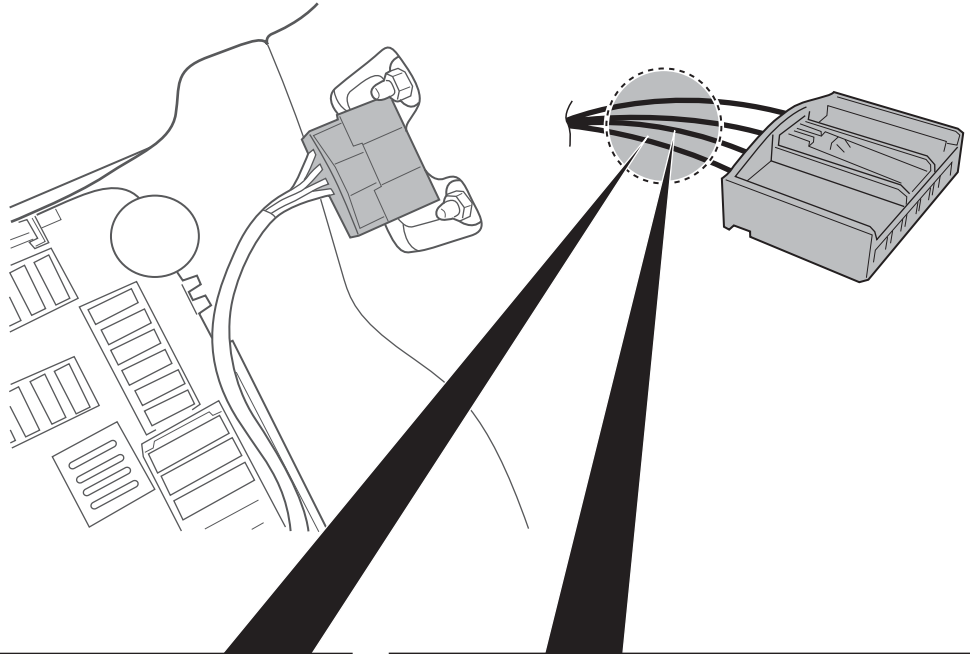
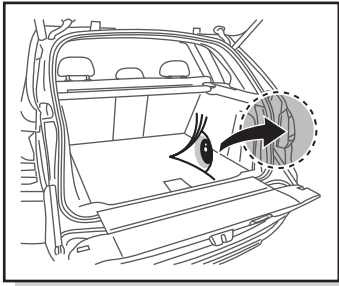
4



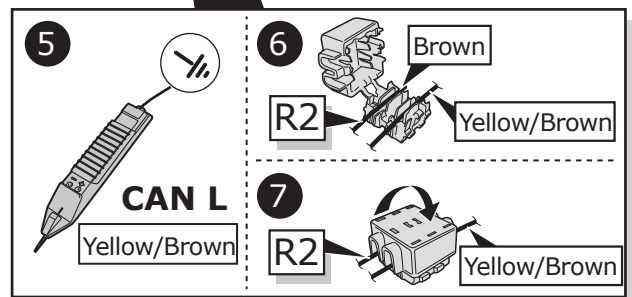
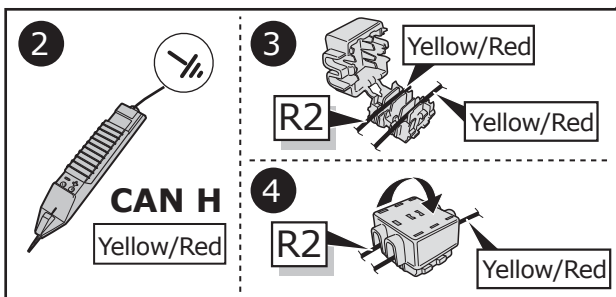
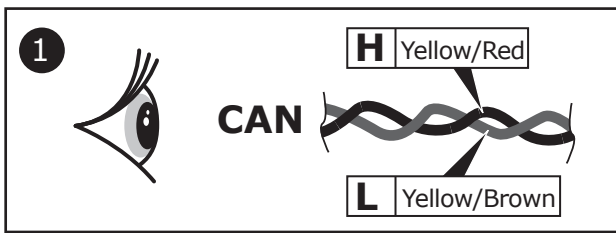
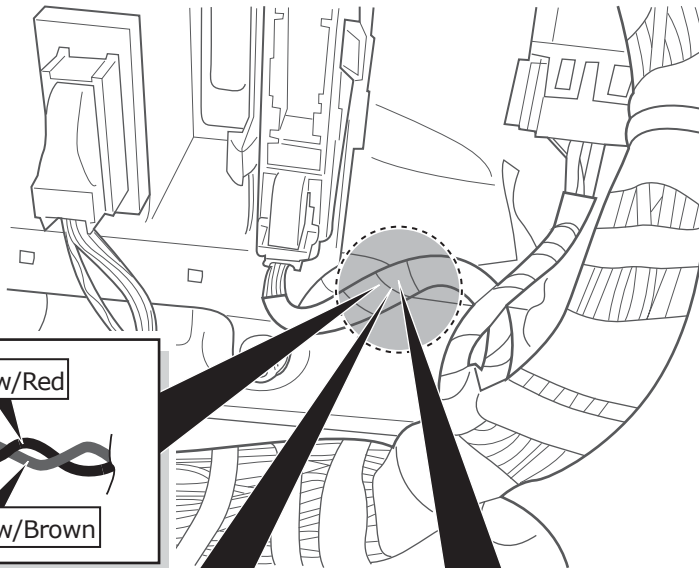
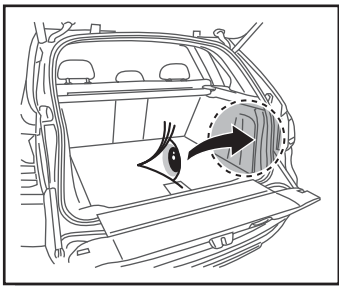
5



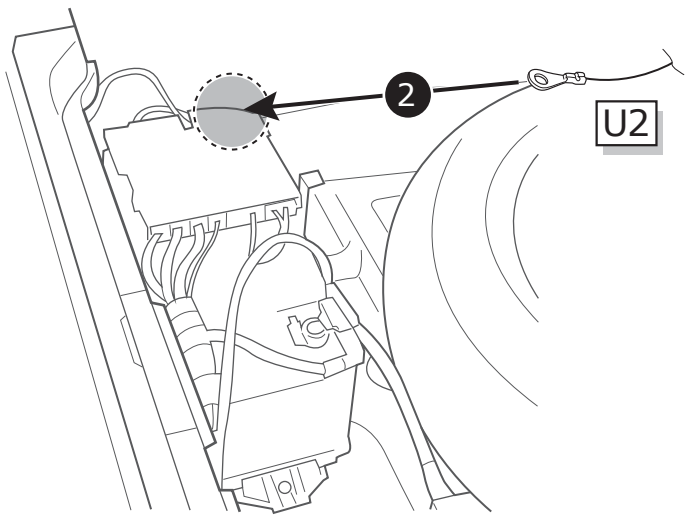
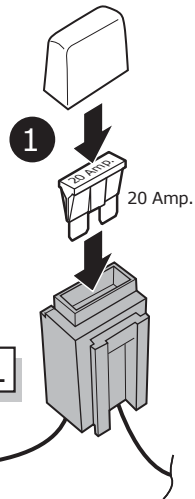
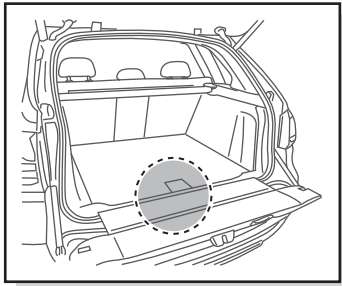
6



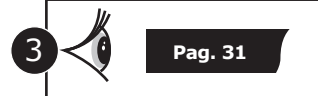
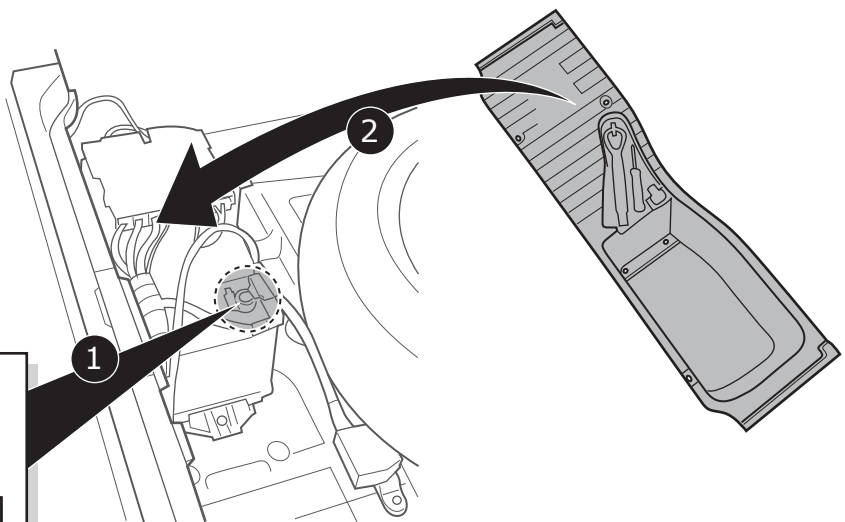
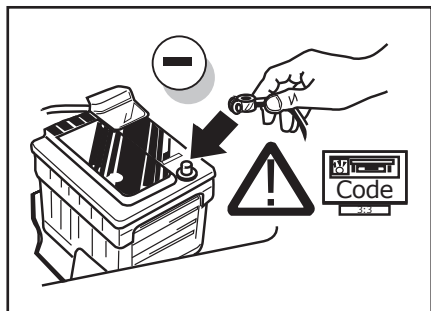
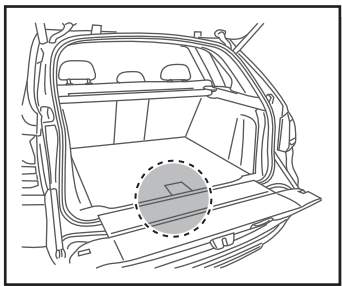
7



8

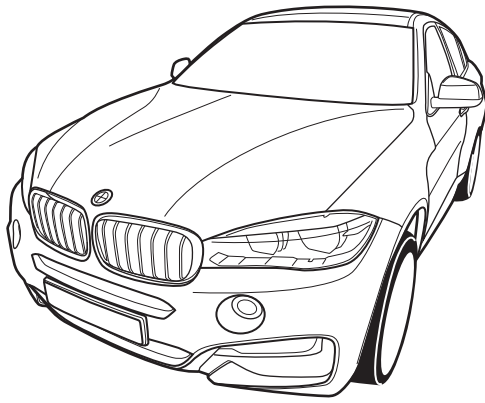


9



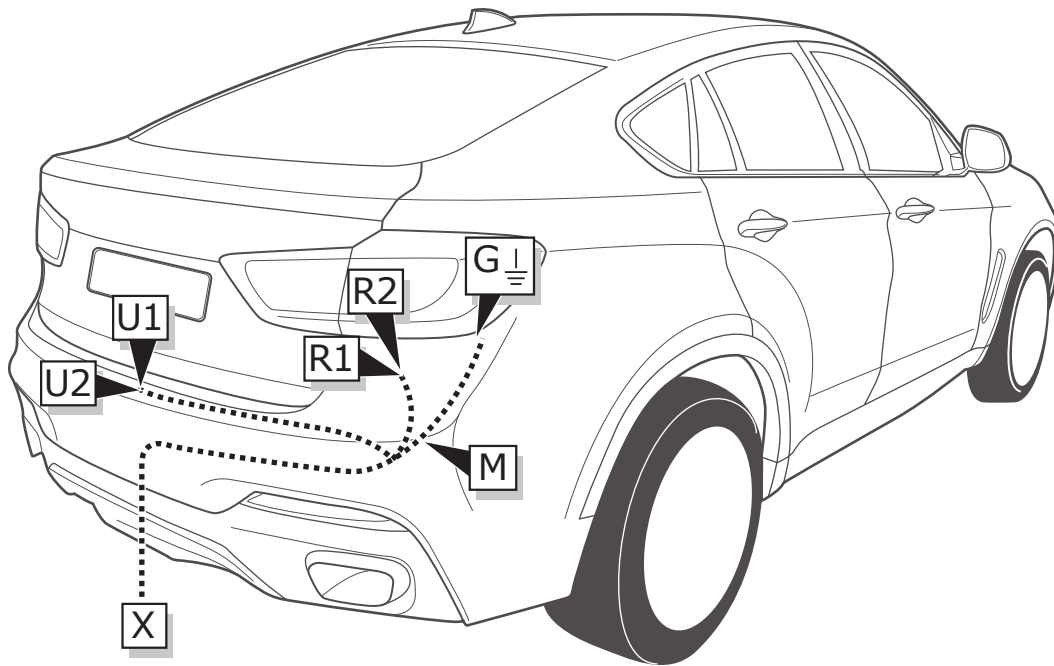
INFO

**BMW X6
(F16)
12/2014-**

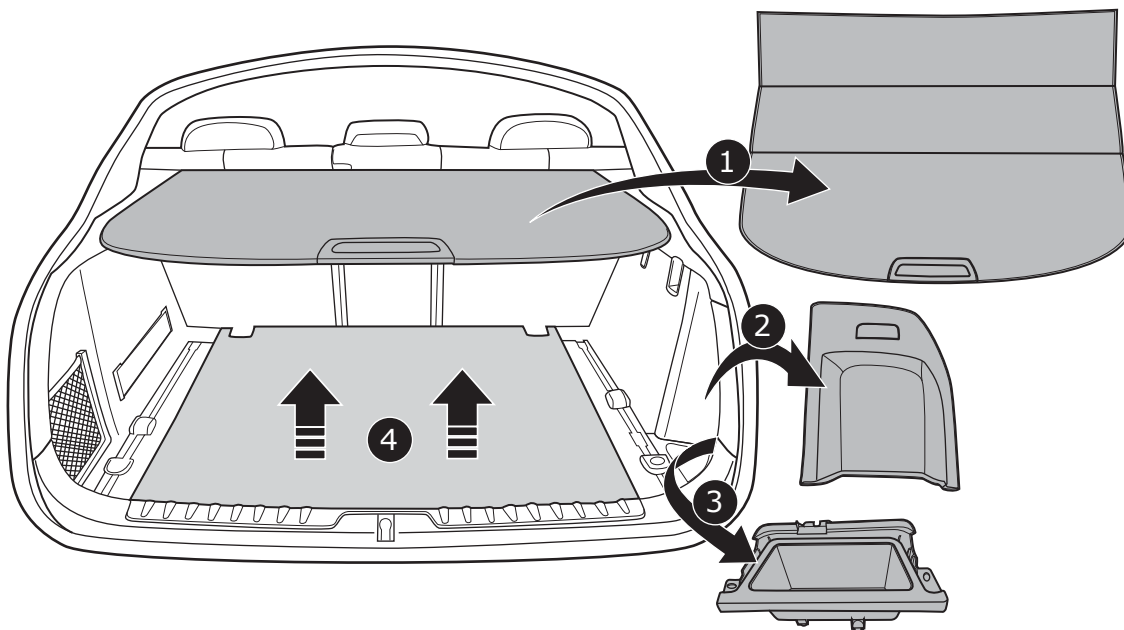


Pag. 26 - 32

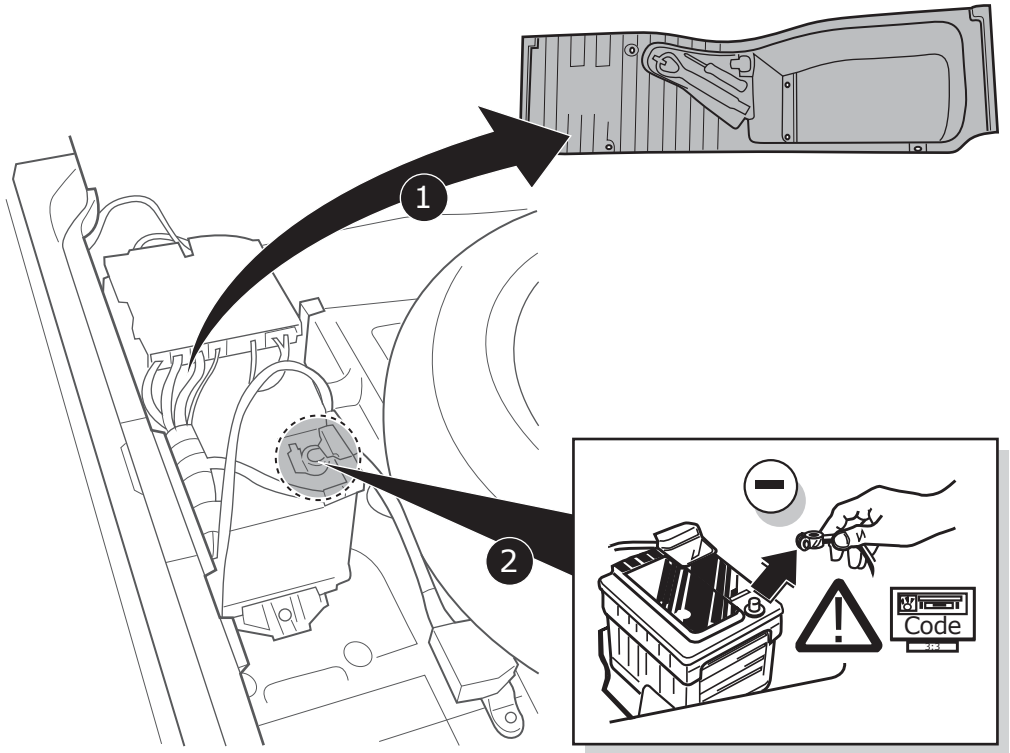
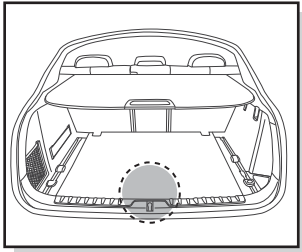
ROUTING



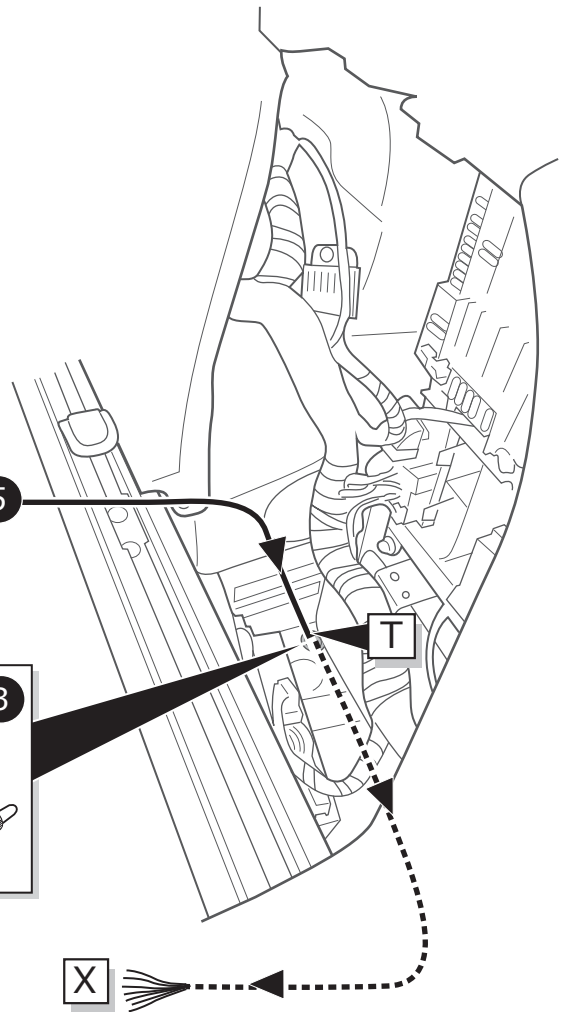
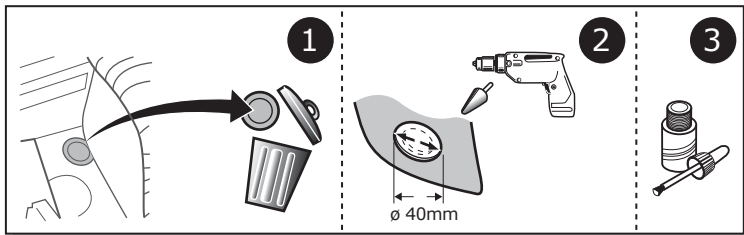
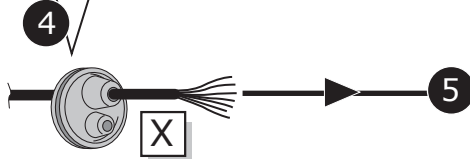
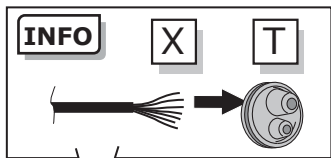
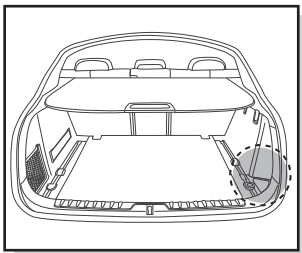
1



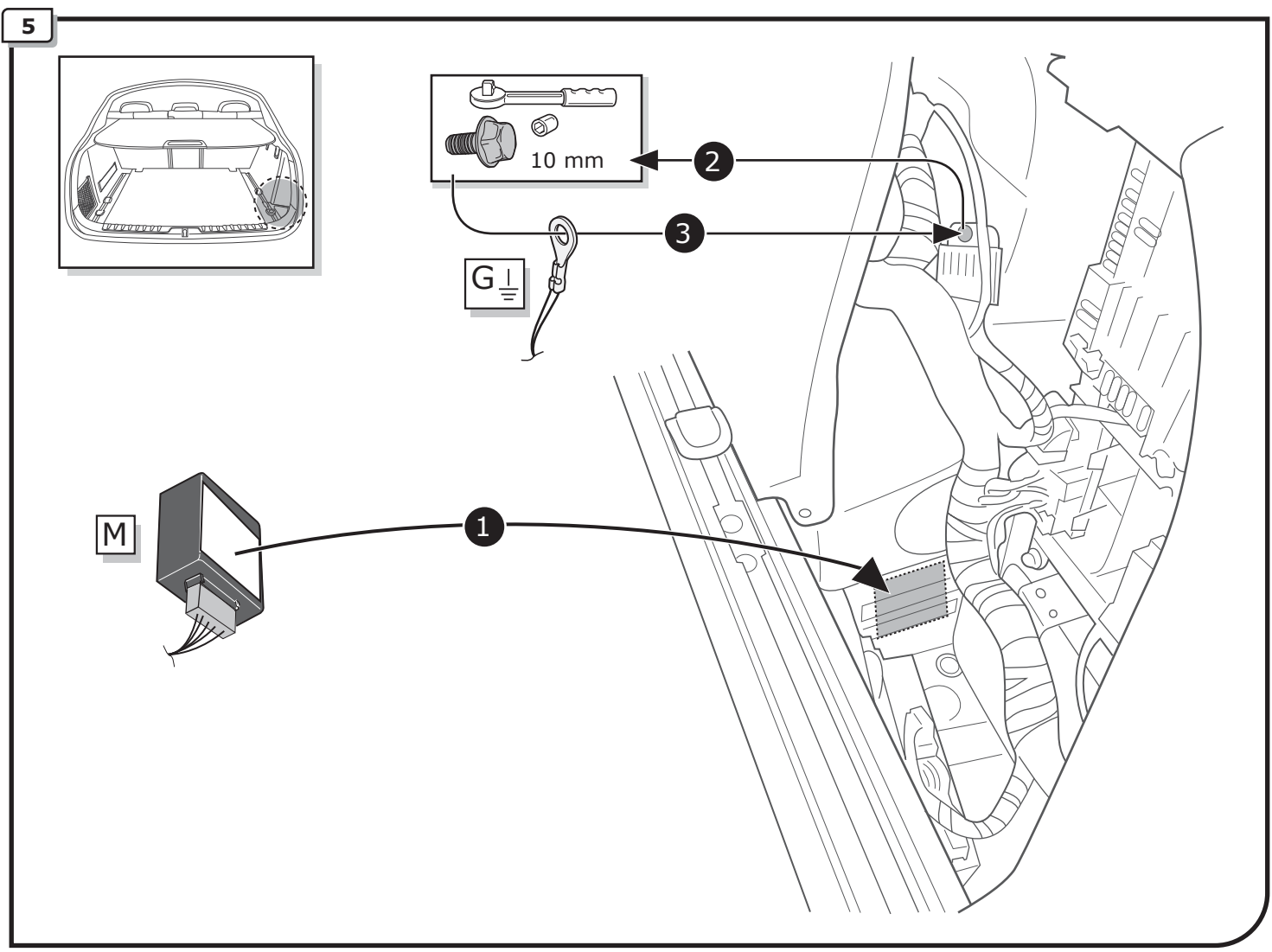
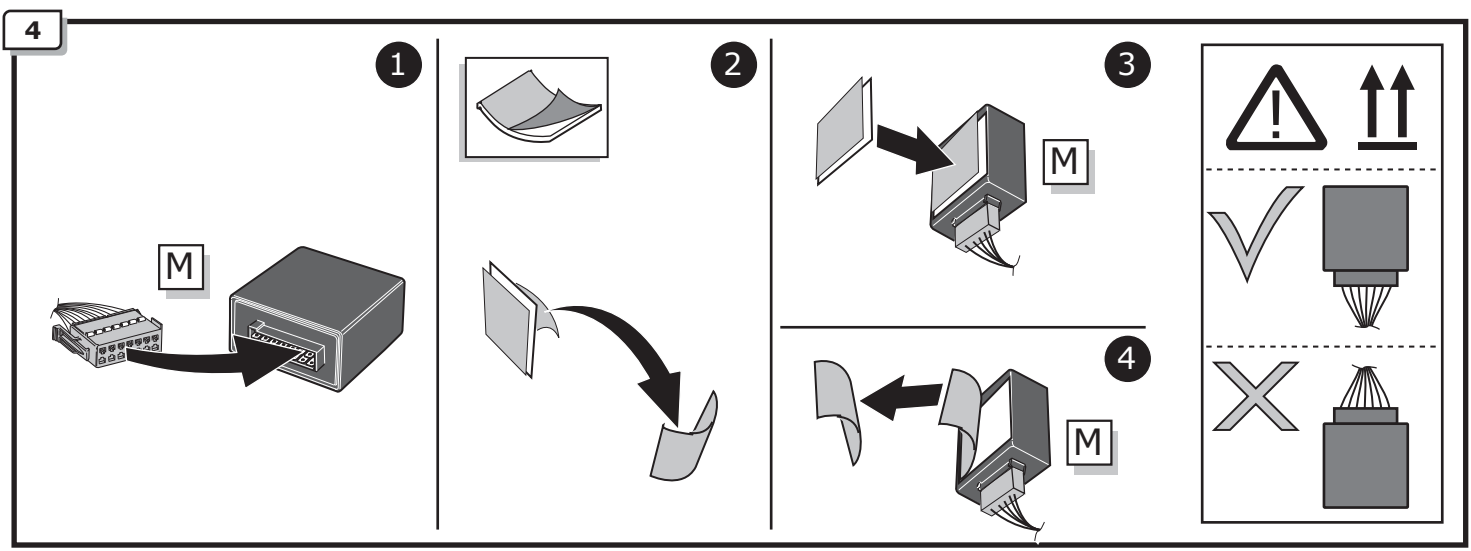
2



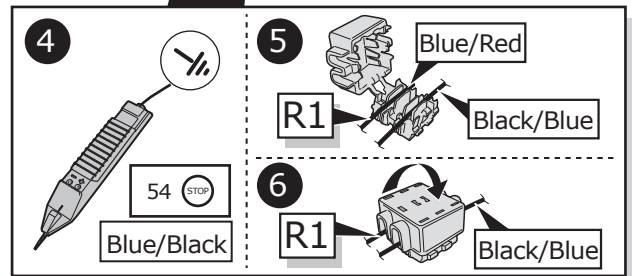
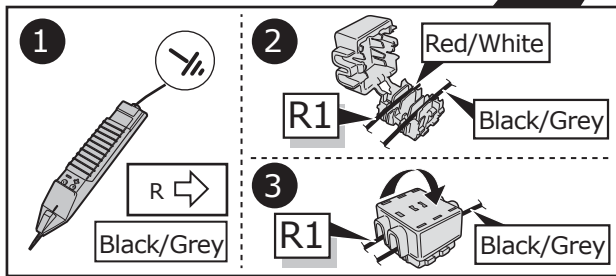
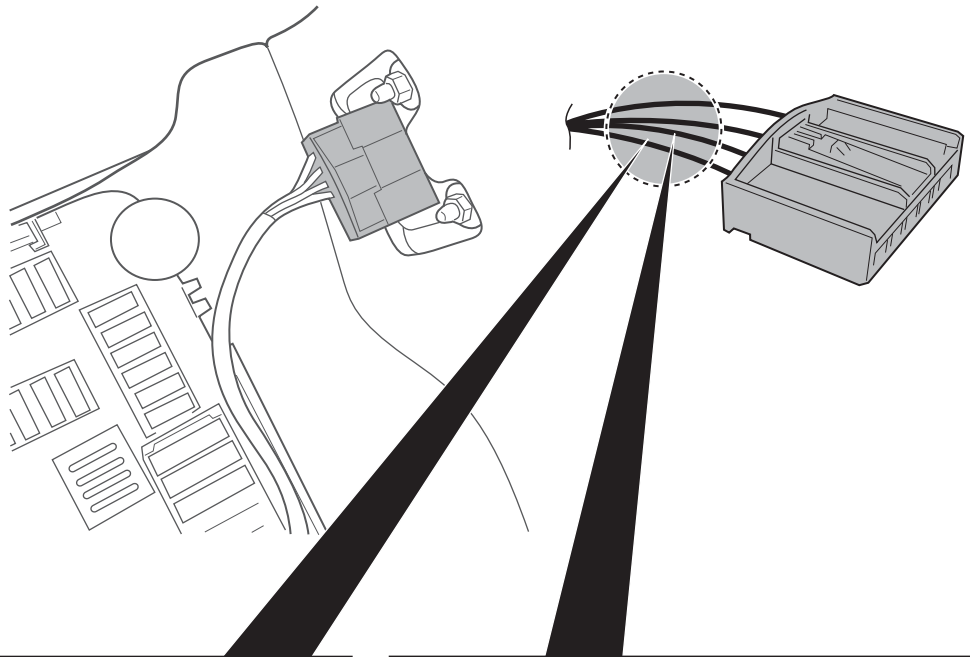
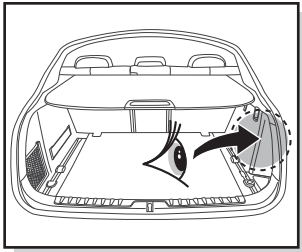
3



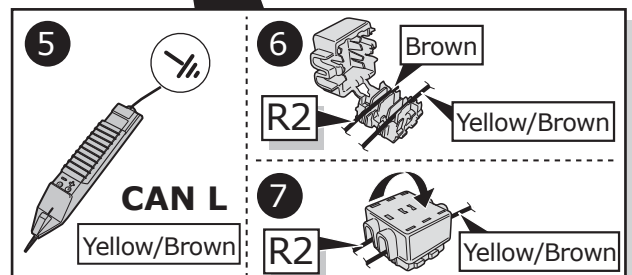
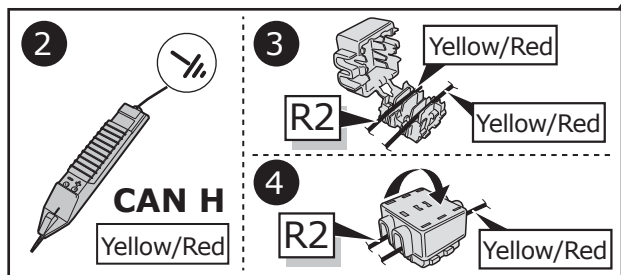
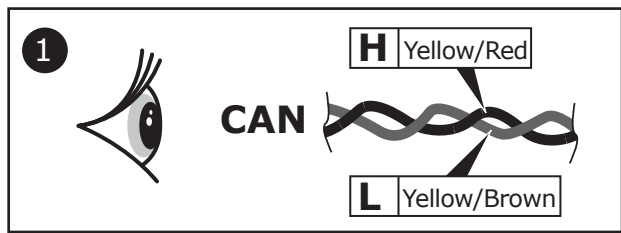
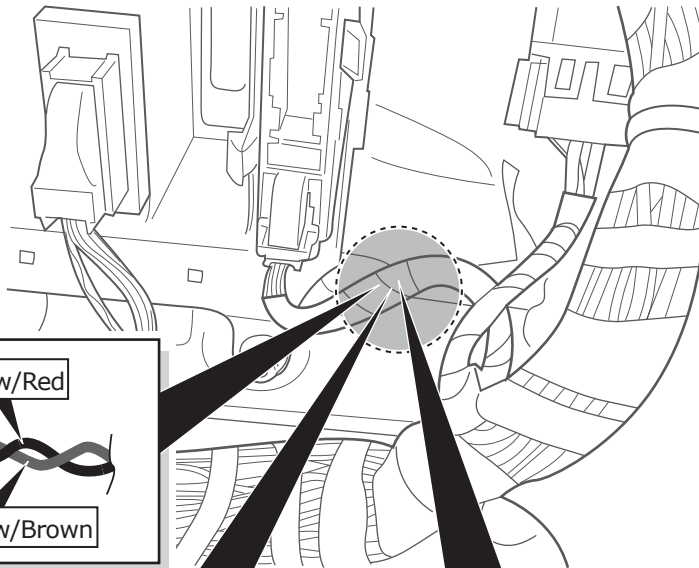
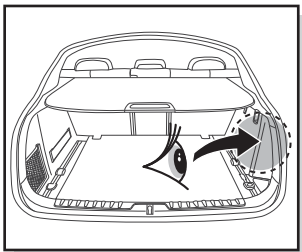
SOCKET CONNECTION



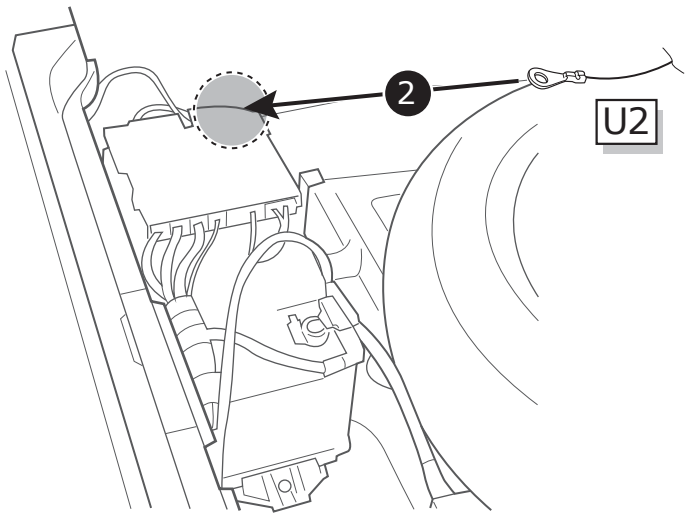
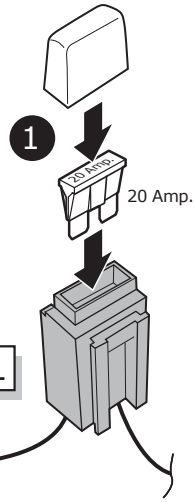
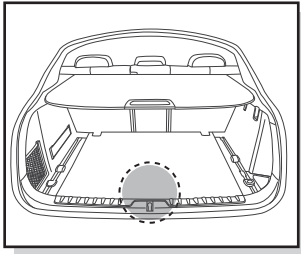
6



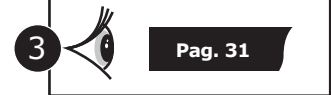
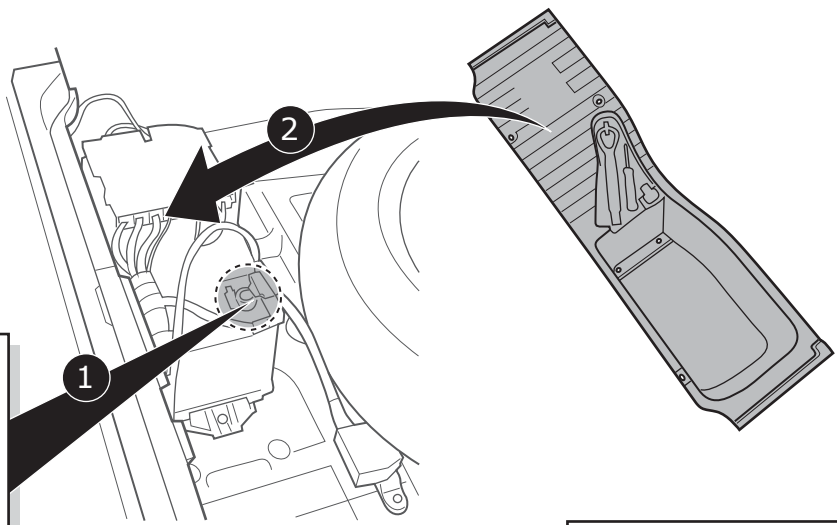
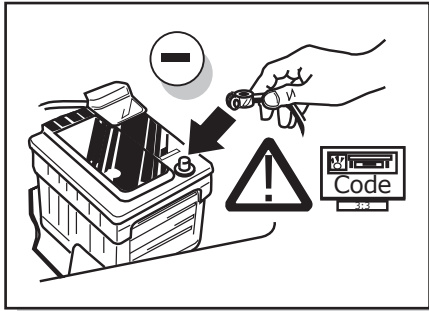
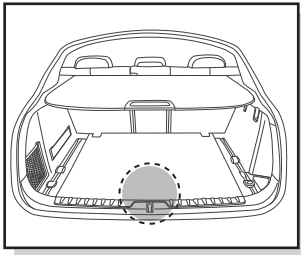
7



8



9



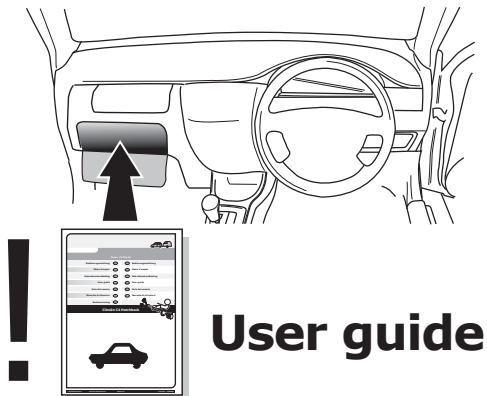
Pag. 31

A

TEST ALL THE CIRCUITS WITH A TEST DEVICE WITH THE CORRECT POWER LOAD FOR EACH FUNCTION. A TEST DEVICE WITH LED'S CANNOT BE USED FOR THIS PURPOSE.

INFO

REINSTALL TRIM.

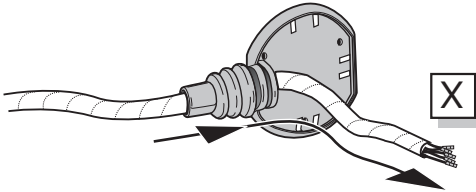
B**INFO**

SOCKET CONNECTION

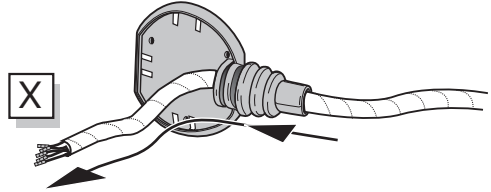
DIN/ISO 1724							
	1/L	2	3/31	4/R	5/58-R	6/54	7/58-L
Pmax	21W	21W		21W	42W	3x21W	42W
Colour	Yellow	Blue	White	Green	Brown	Red	Black

A

Option 1



Option 2



INFO

SOCKET CONNECTION

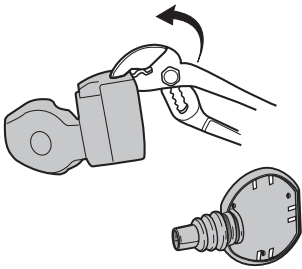


Pag. 31

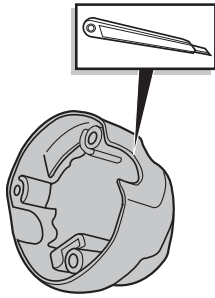
B

Option 1

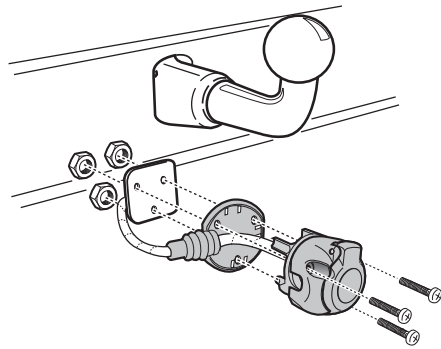
1



2



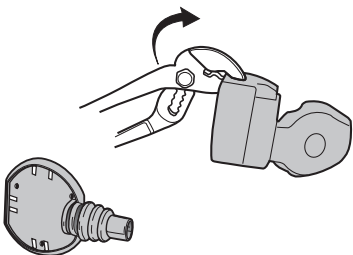
3



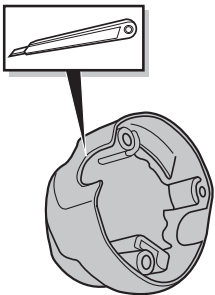
C

Option 2

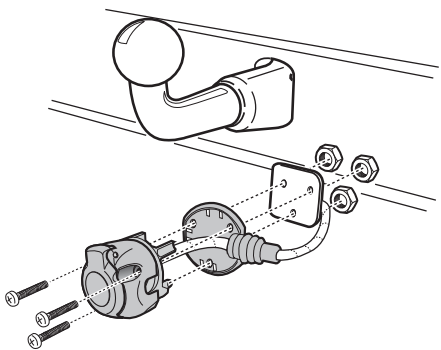
1



2

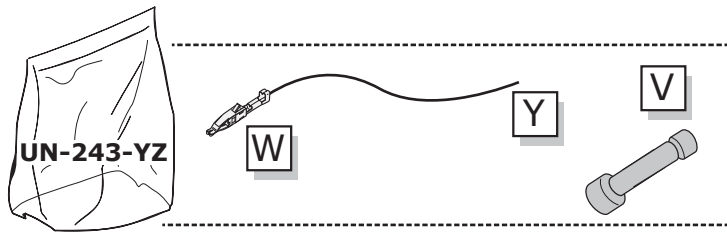


3

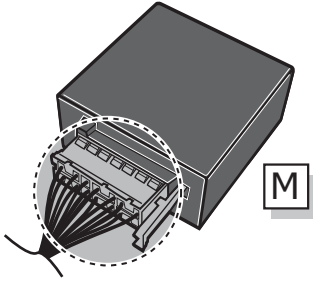


UN-243-YZ Reverse lamp pre-wire extension

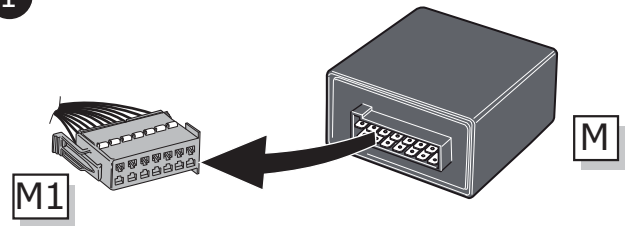
⚠ MAX = 21W



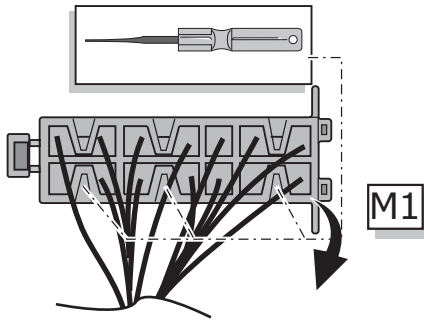
A



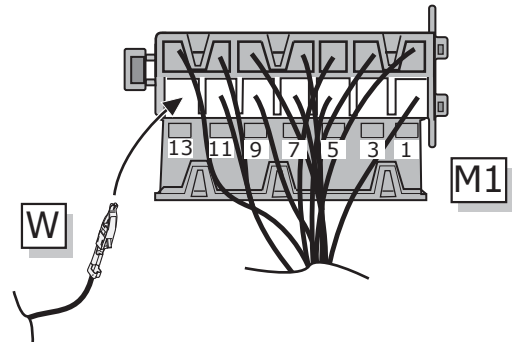
1



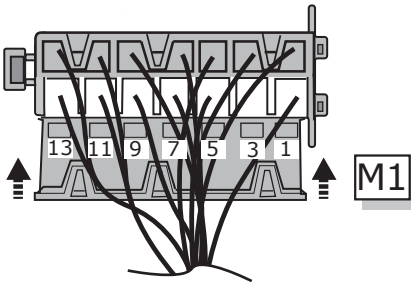
2



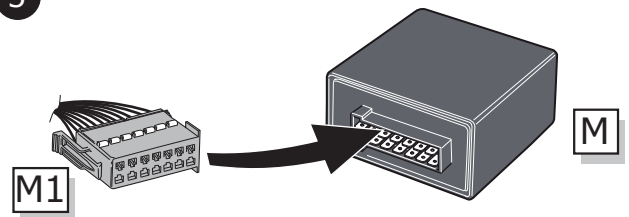
3



4



5



B

⚠ MAX = 21W

