

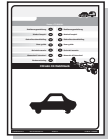
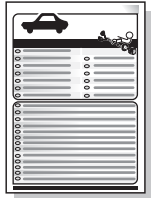
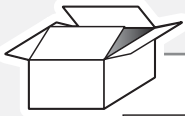
## Jeep Cherokee KL 2014-

Partnr.: CR-069-BXU

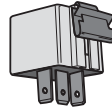
- Fitting instructions electric wiring kit tow bar with 12-N socket up to DIN/ISO Norm 1724.
- We would expressly point out that assembly not carried out properly by a competent installer will result in cancellation of any right to damage compensation, in particular those arising by virtue of the product liability act.
- Contents of these kits and their fitting manuals are subject to alteration without notice, please ensure that these instructions are read and fully understood before commencing installation.
- Do not overload circuits; the maximum loads per connection are detailed in this manual.
- Attention! Before Installation, please read this manual carefully and inform your customer to consult the vehicle owners manual to check for any vehicle modifications required before towing.
- In the event of functional problems, troubleshooting must be limited to about 0.5 hours, contact the technical support:  
[ukts@ecs-electronics.com](mailto:ukts@ecs-electronics.com) / 07440 202 052.



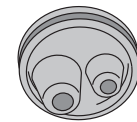
# Part list



L3

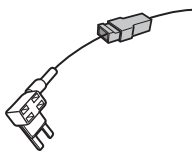


2x



T

R



L1



T

X

## Optional UN-243-YZ

Reverse lamp pre-wire extension



Pag. 13

L2

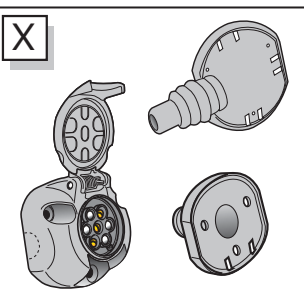
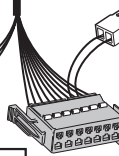


L3



B

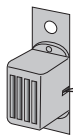
M



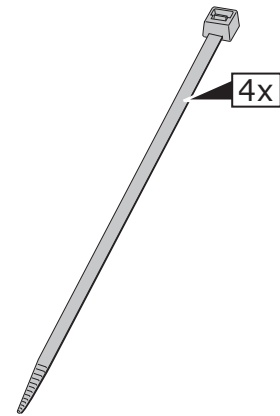
X



M



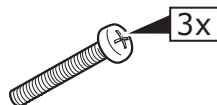
B



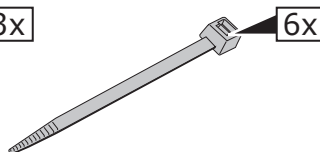
4x



3x



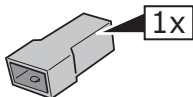
3x



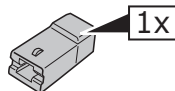
6x

1x

20 Amp. minifuse



1x



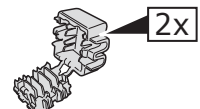
1x



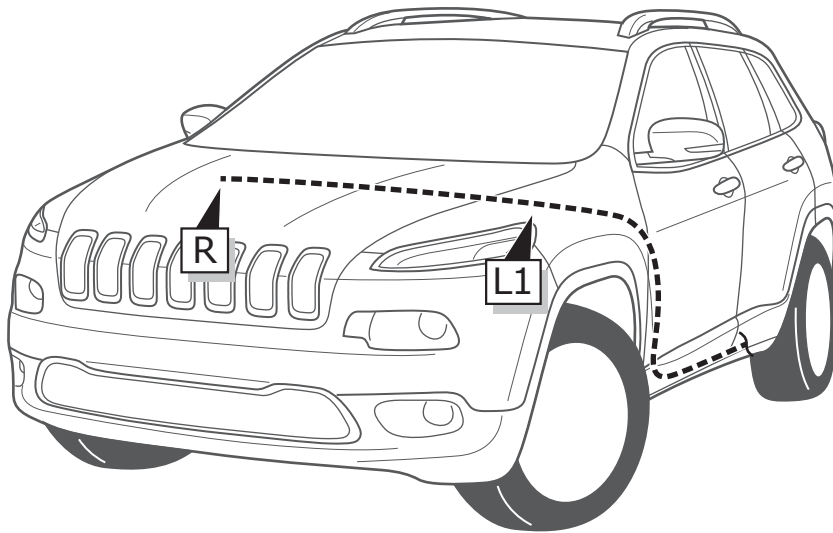
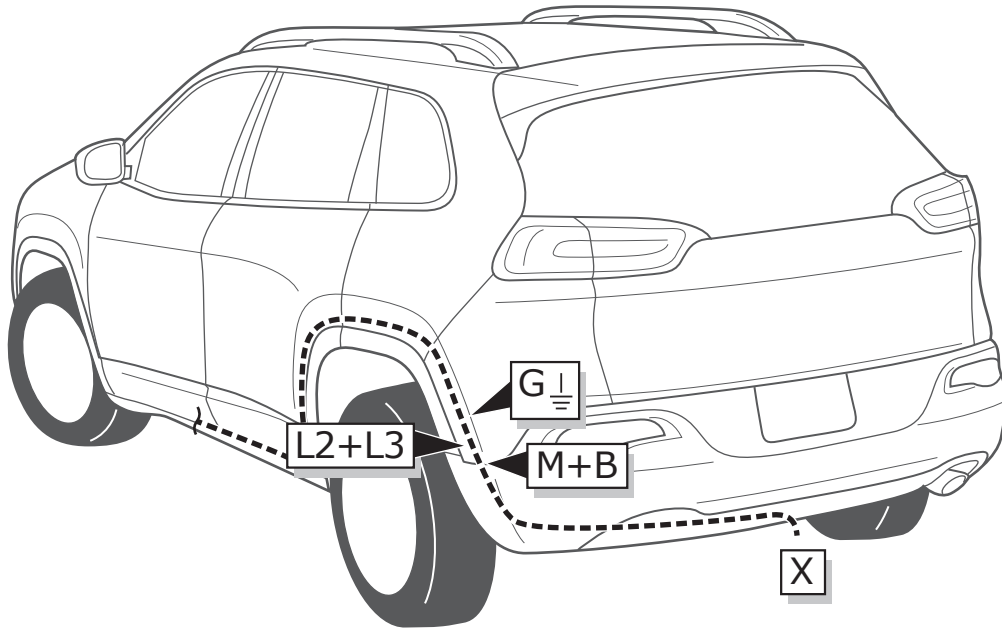
1x



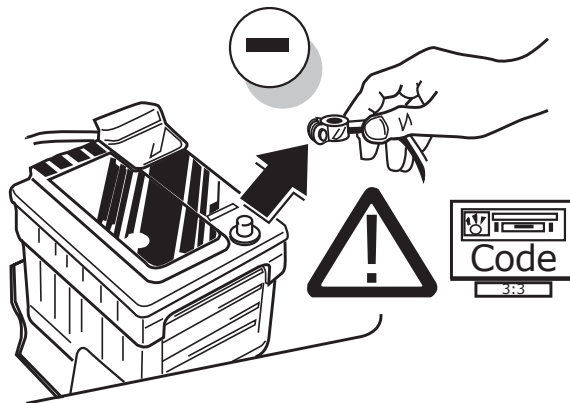
1x



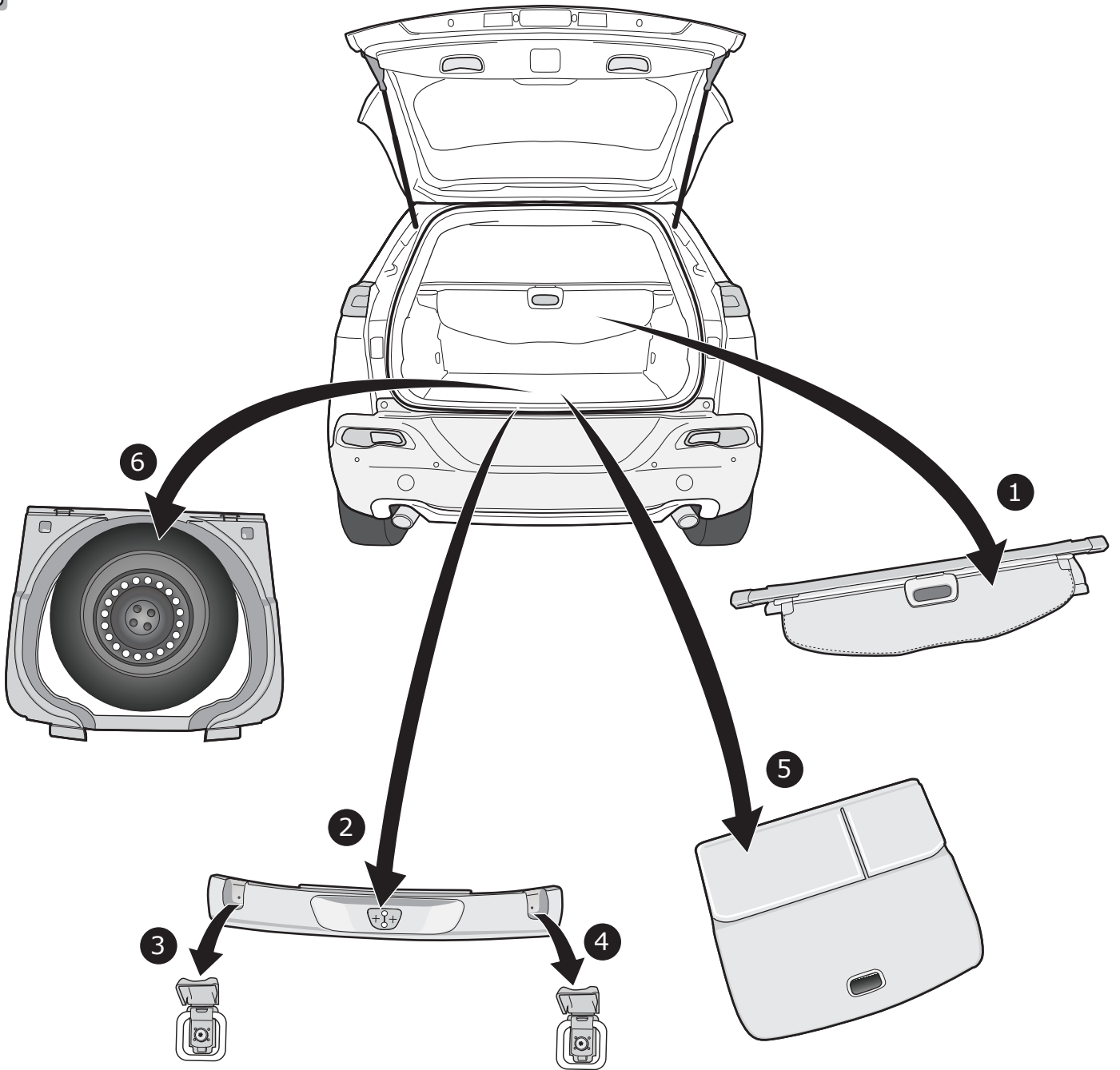
2x



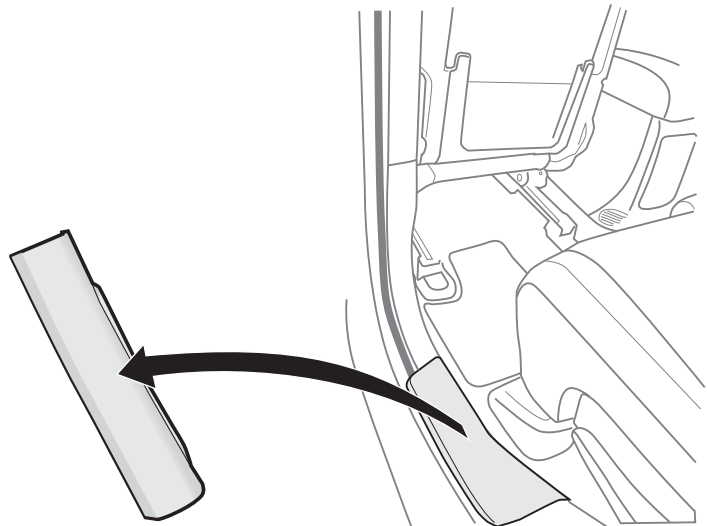
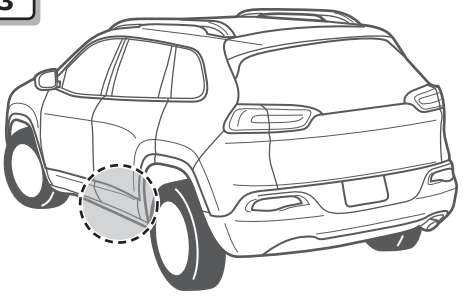
1

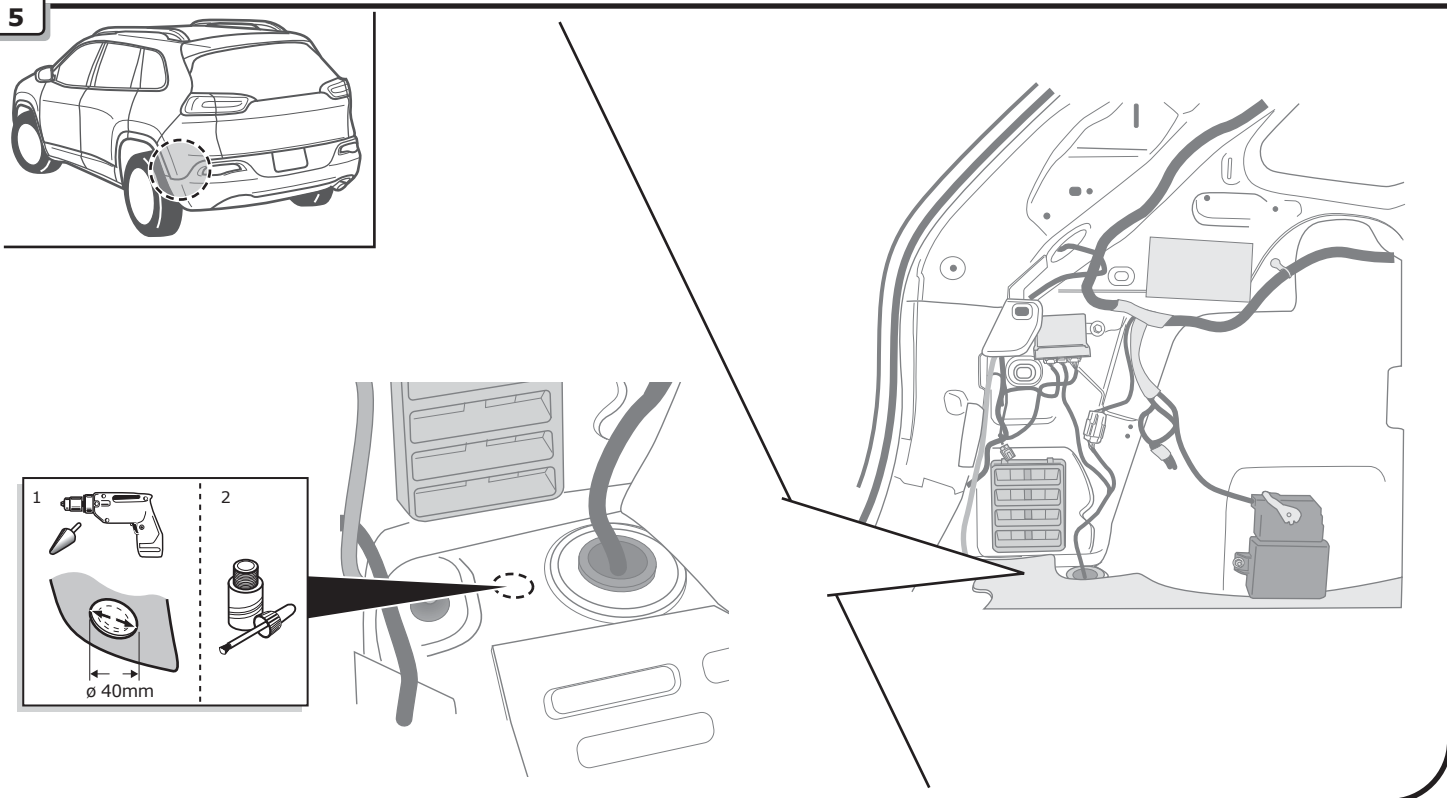
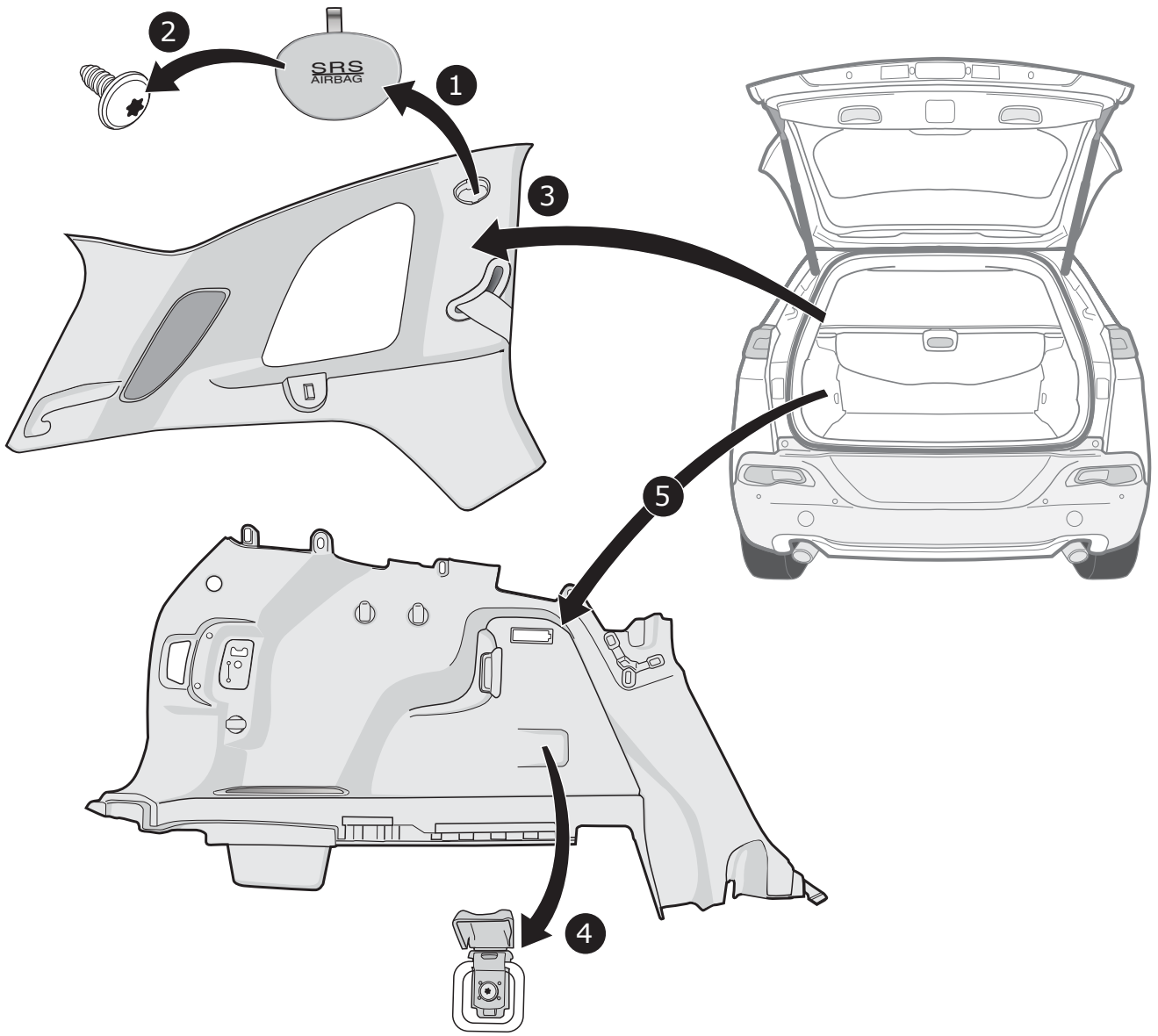


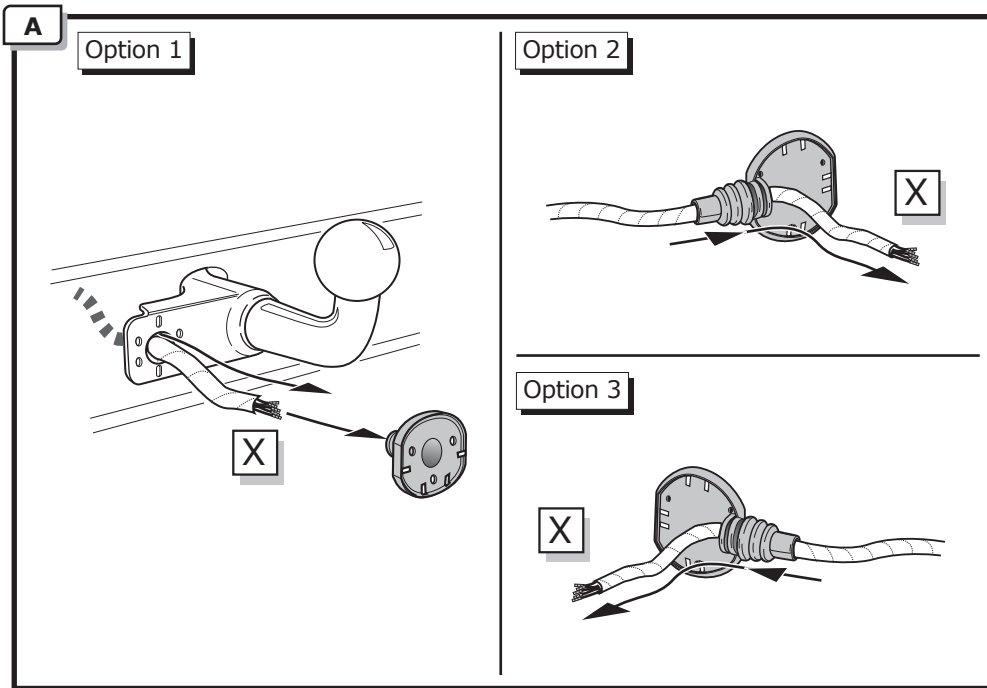
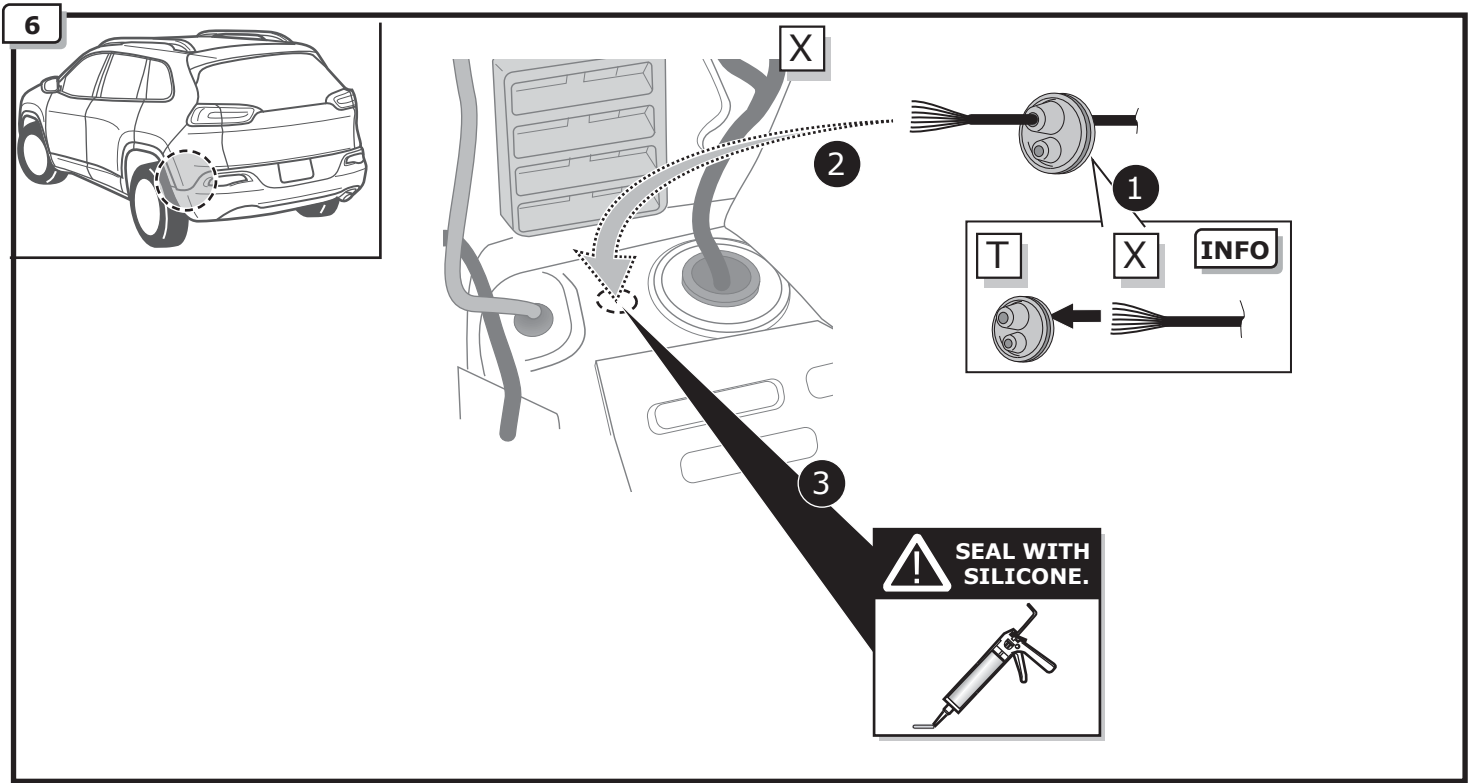
2



3




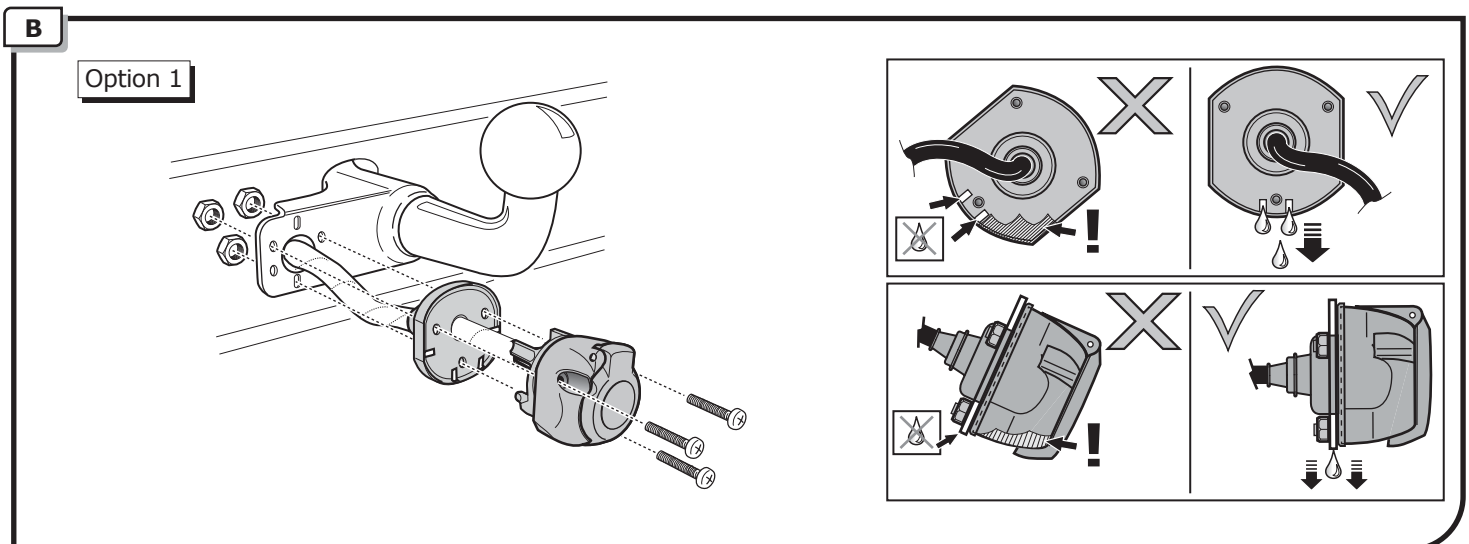


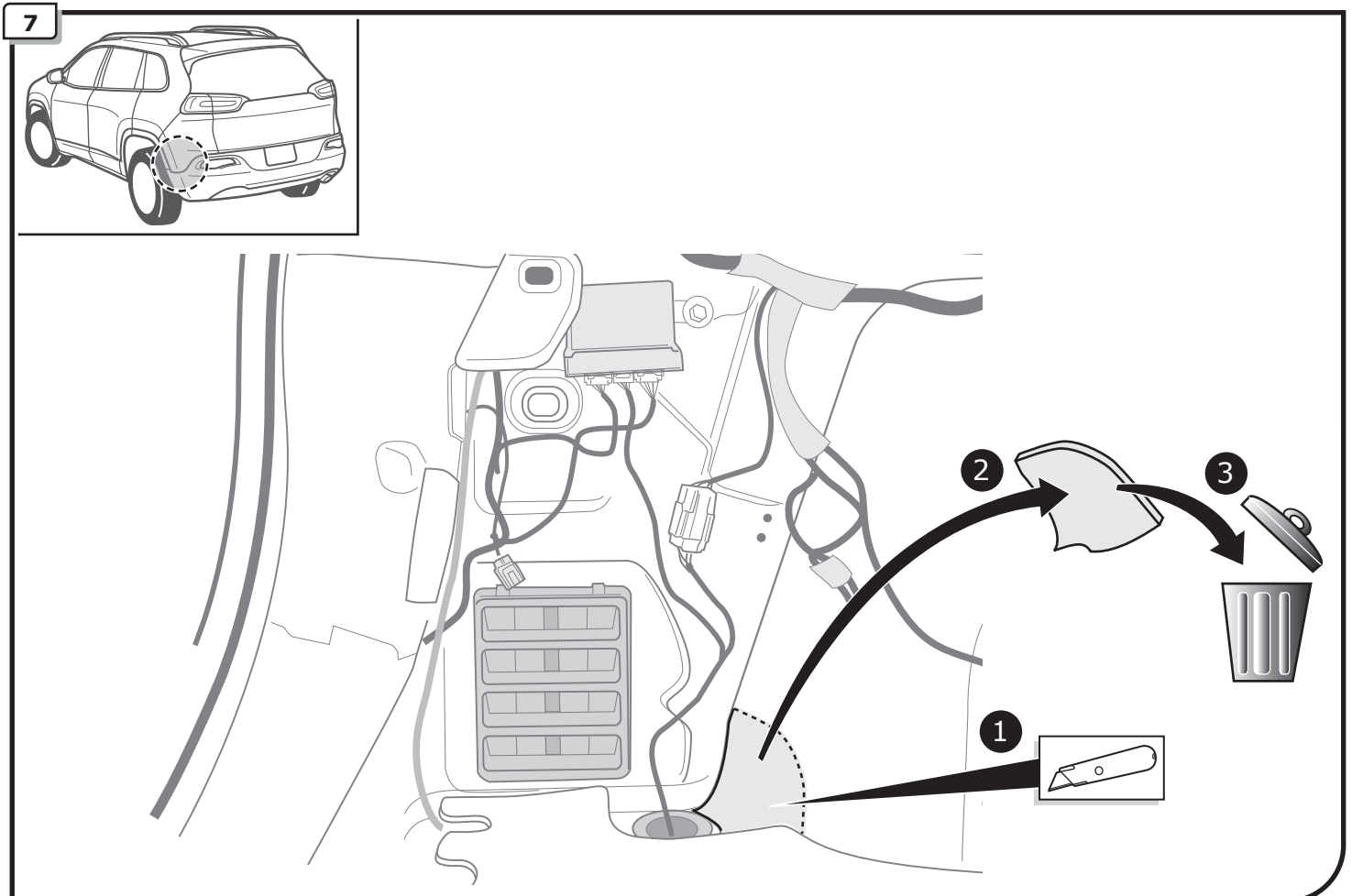
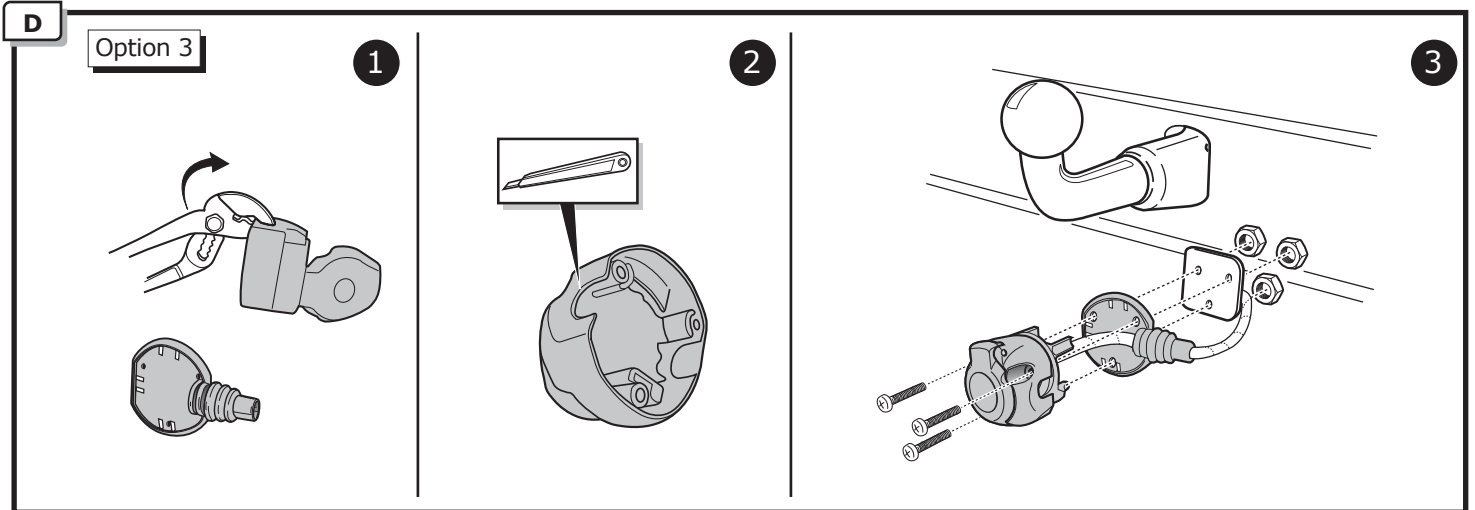
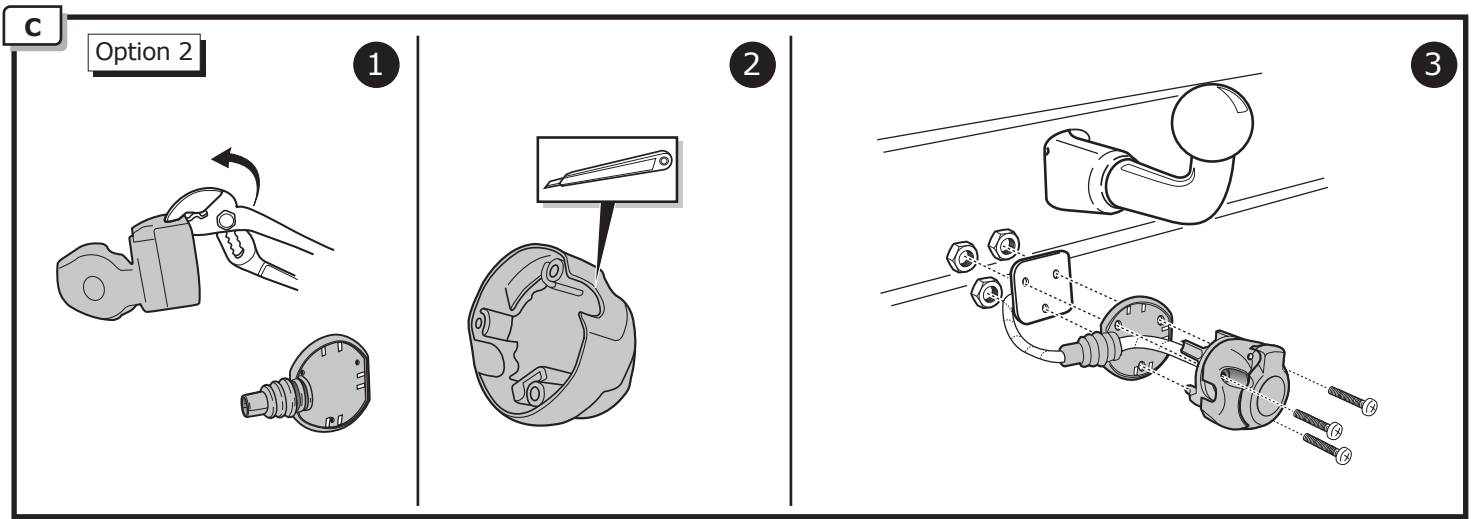


**INFO**

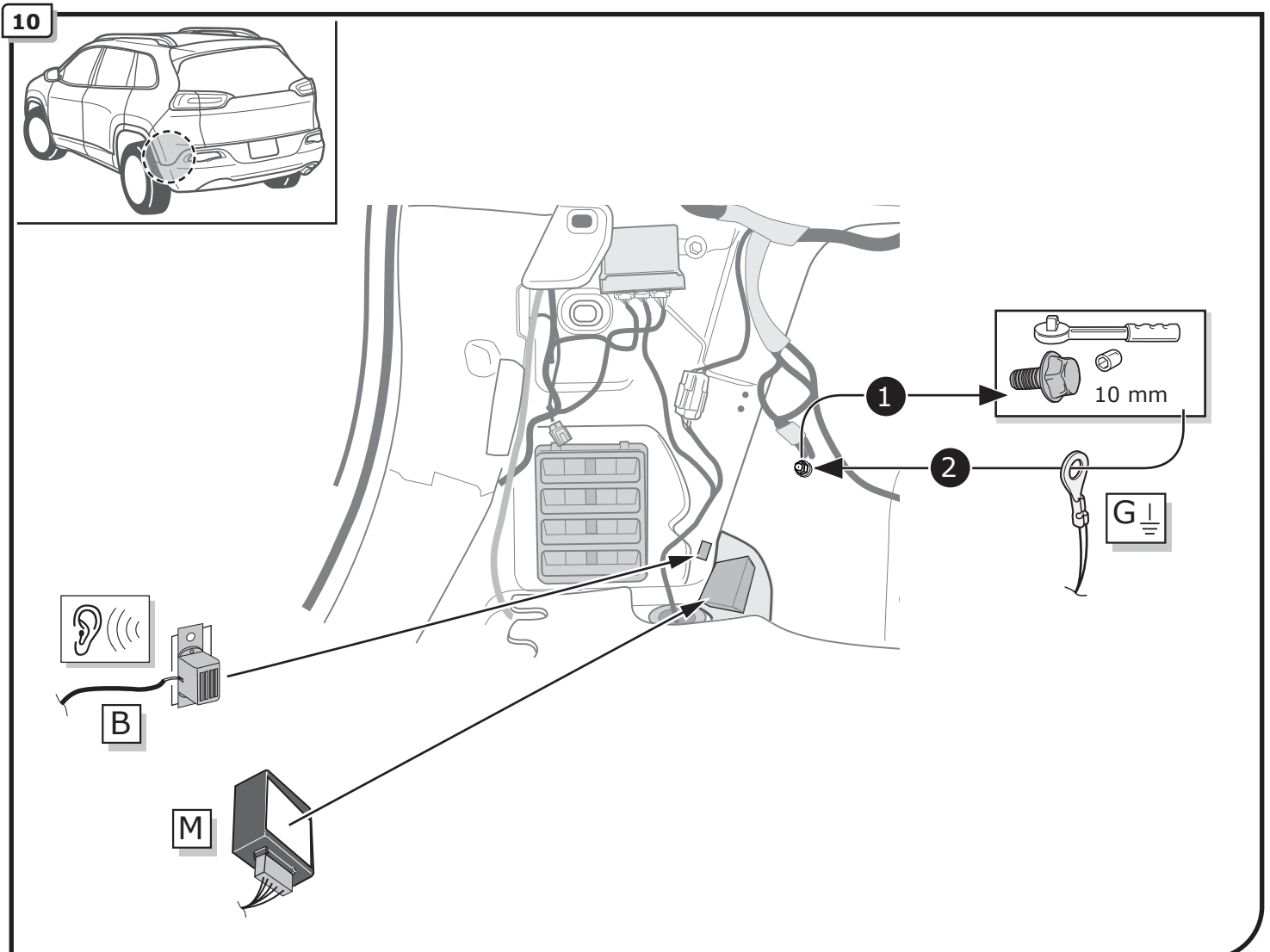
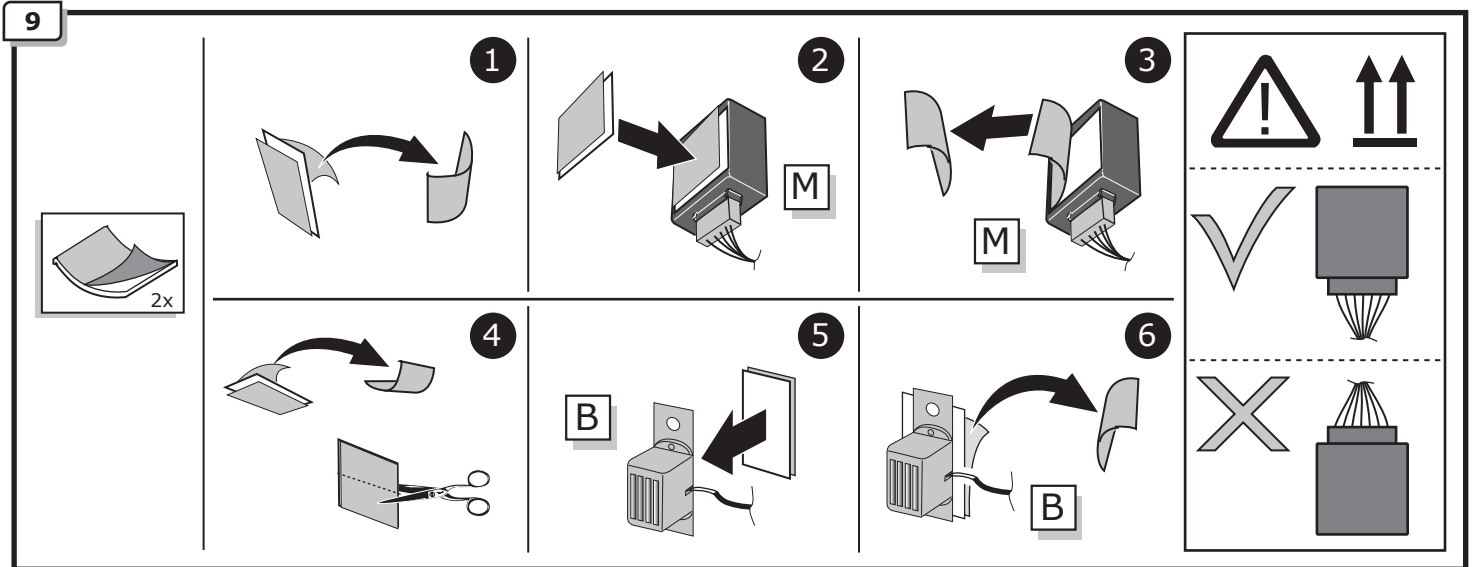
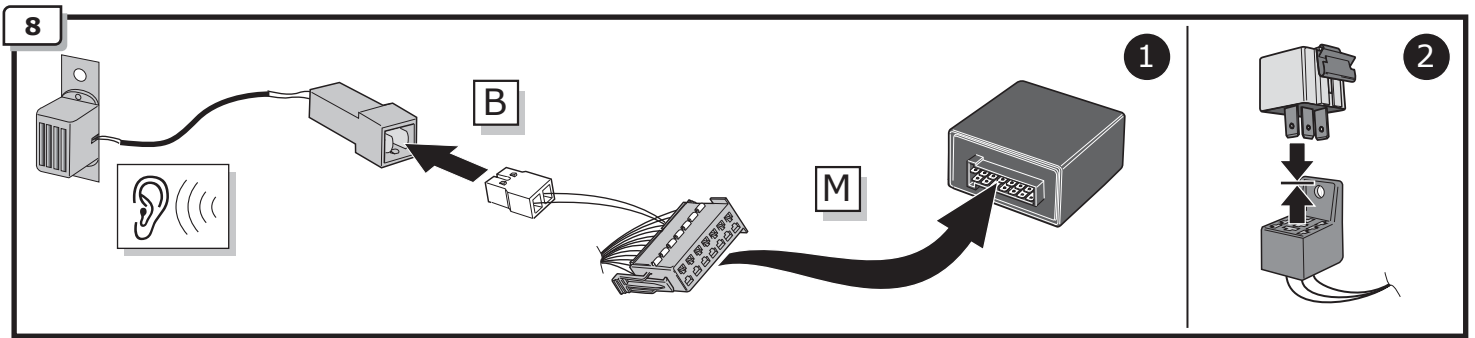
**SOCKET CONNECTION**

 **Pag. 14**



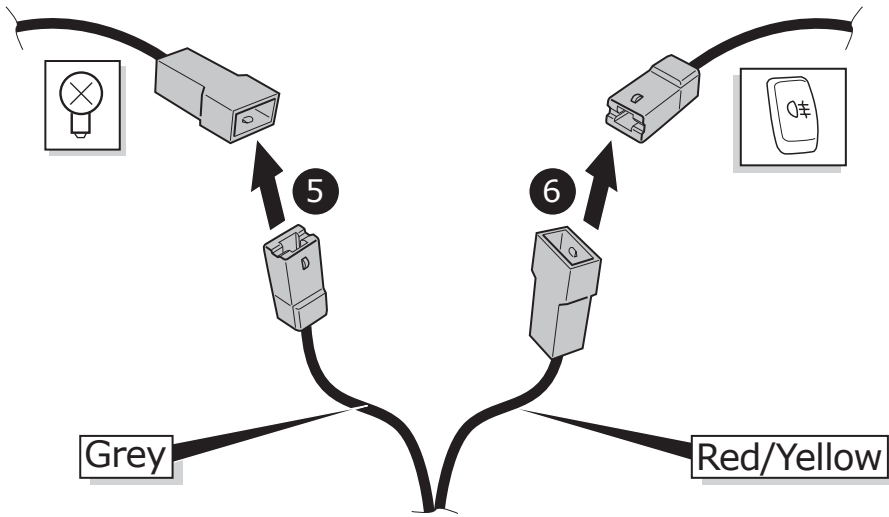
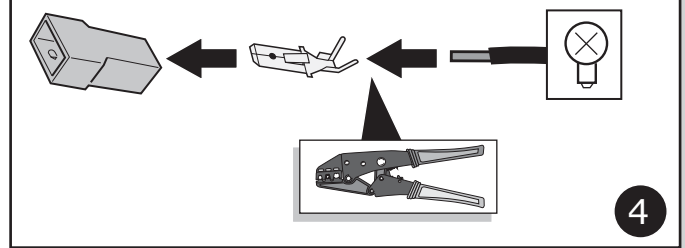
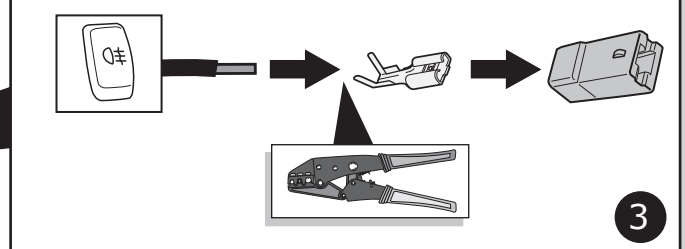
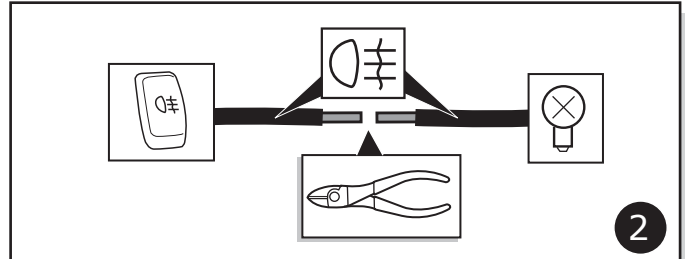
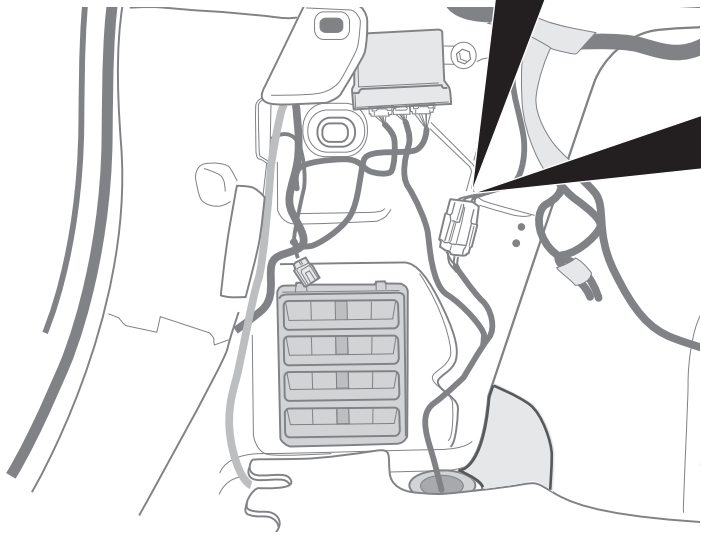
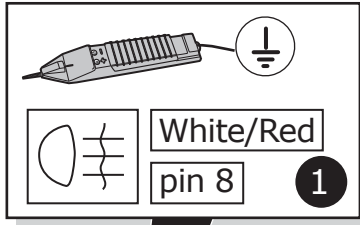




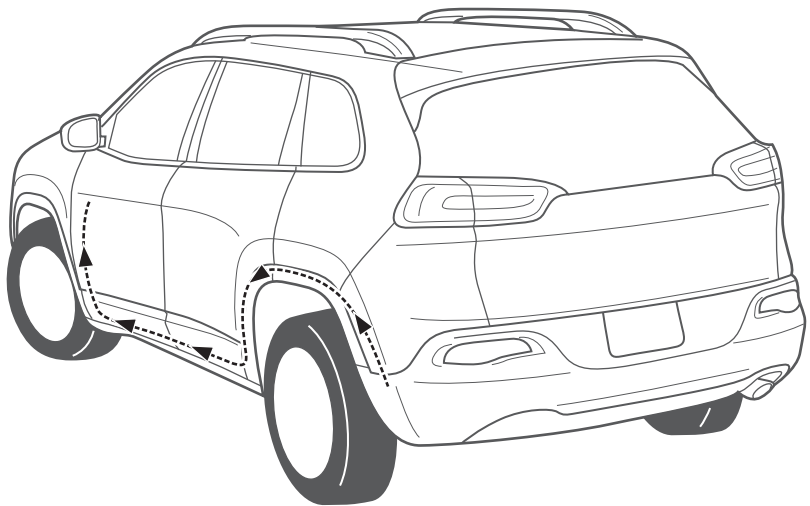




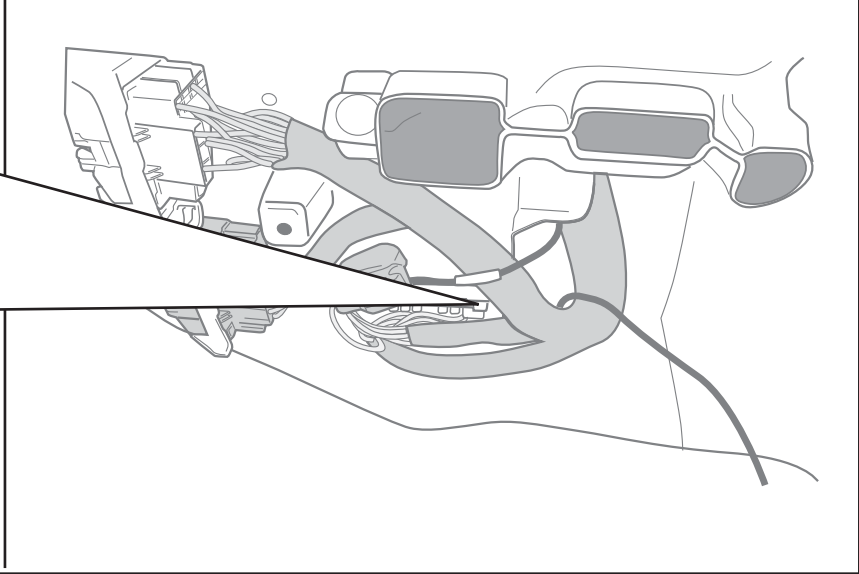
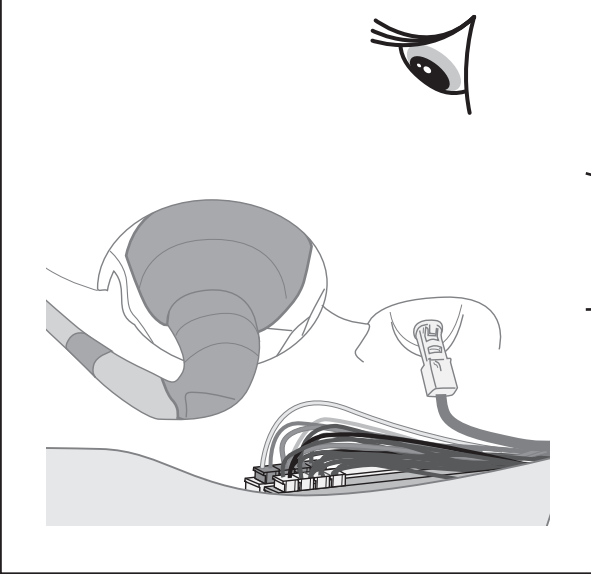
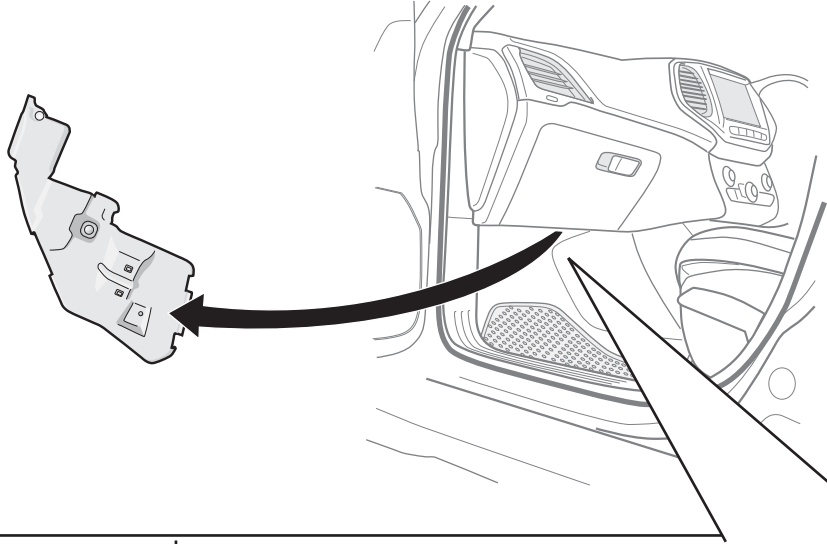
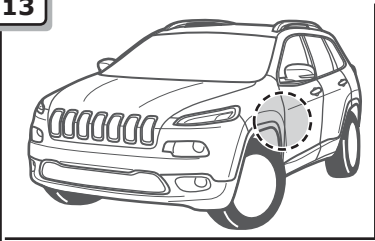
11



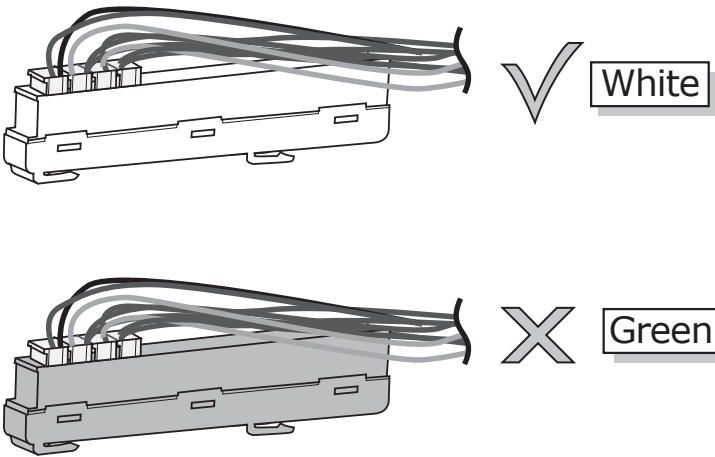
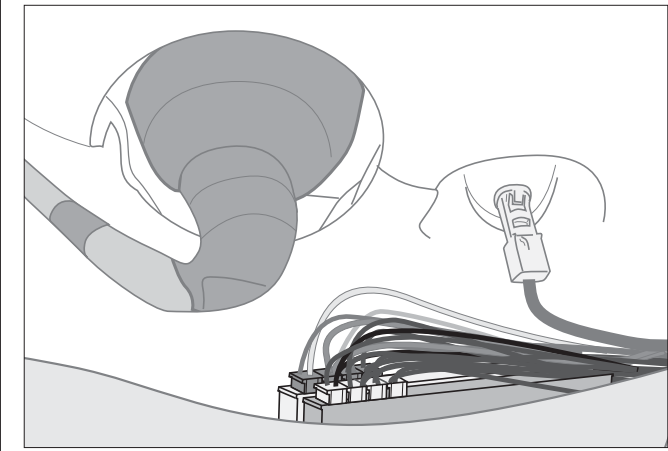
12



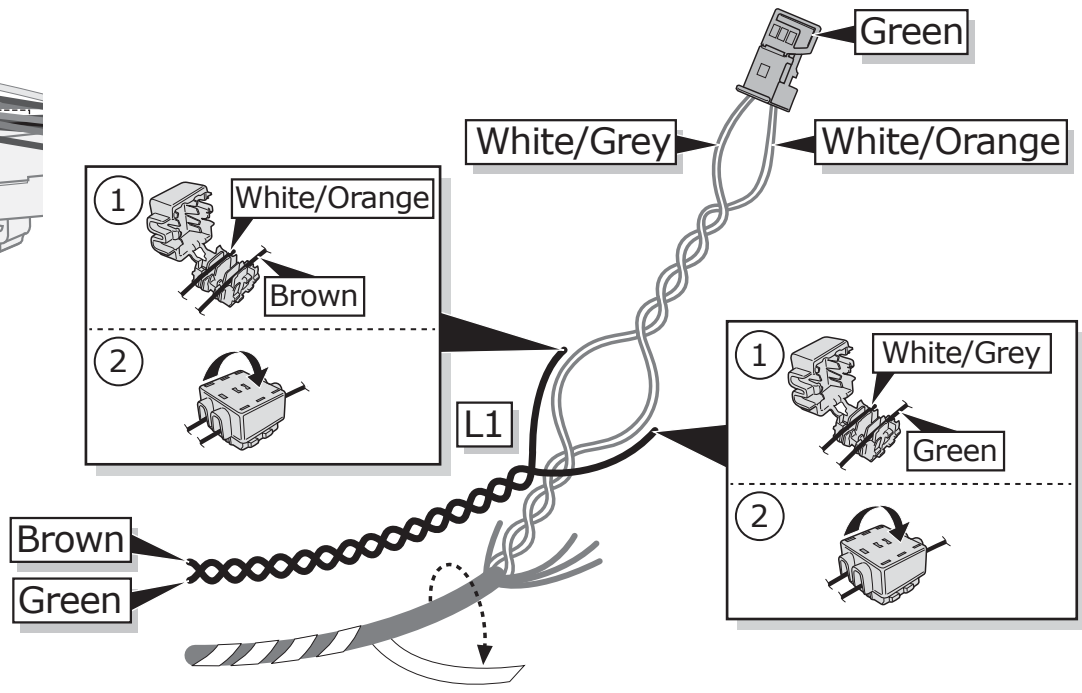
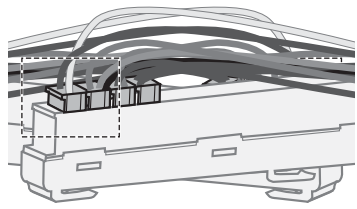
13



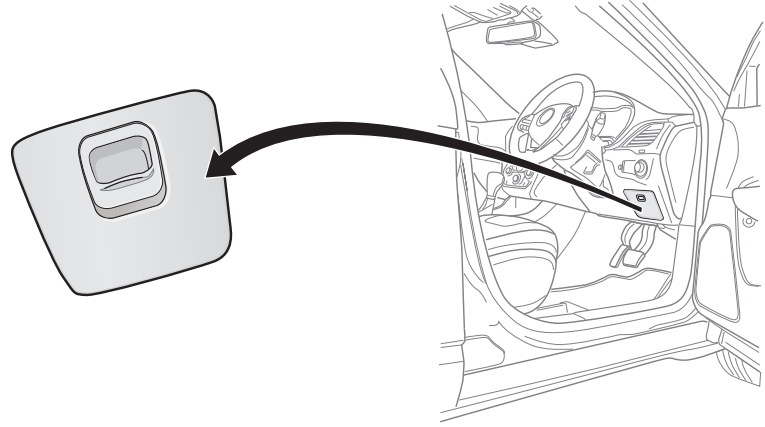
14



15



16



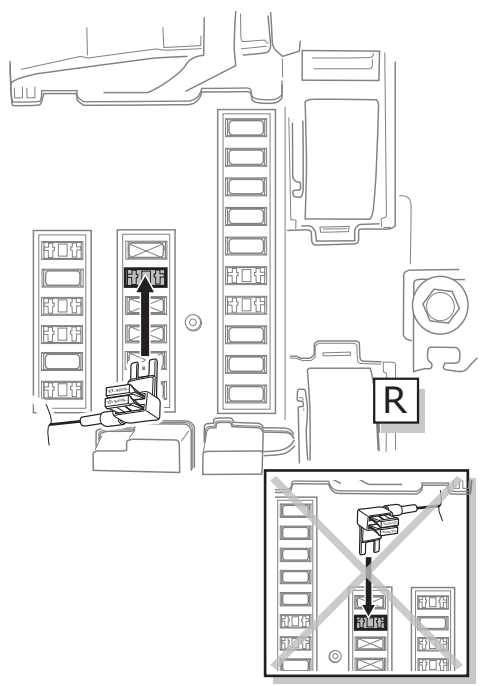
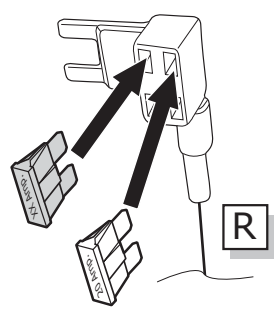
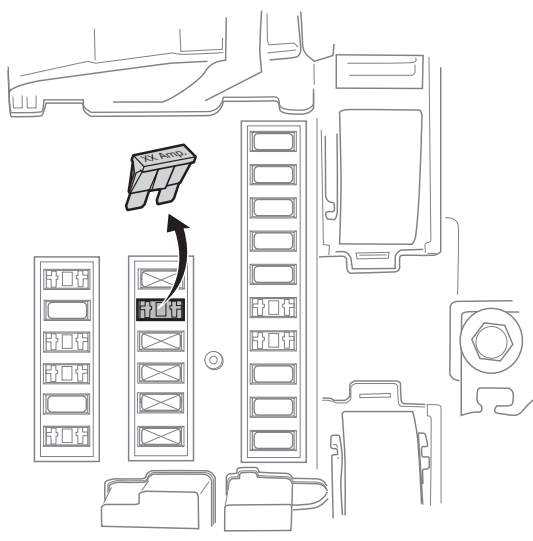
17

OPTION 1

1

2

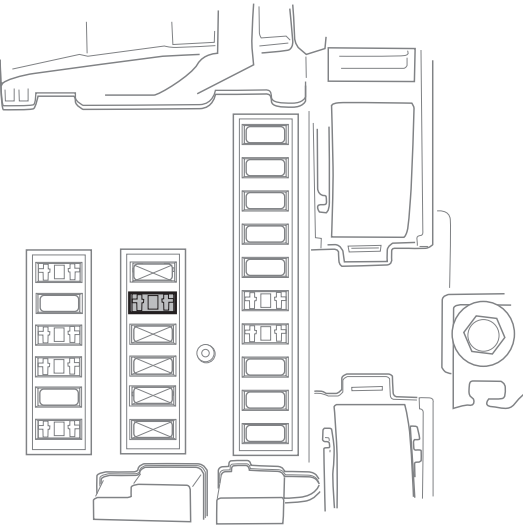
3



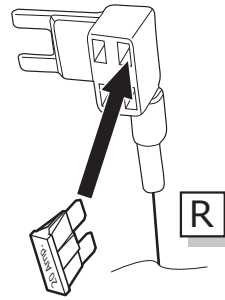
18

## OPTION 2

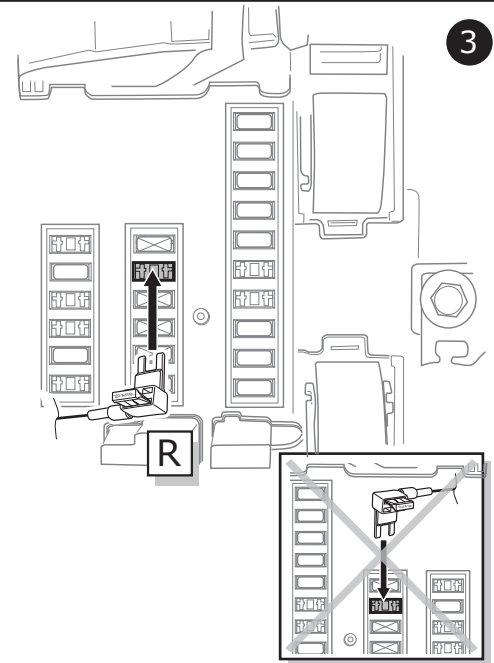
1



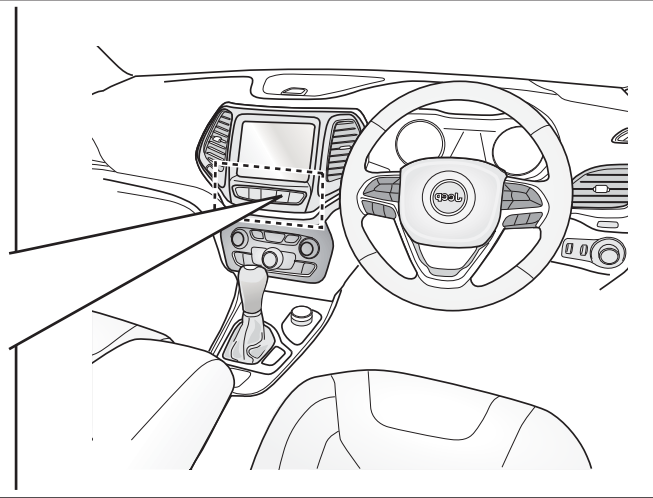
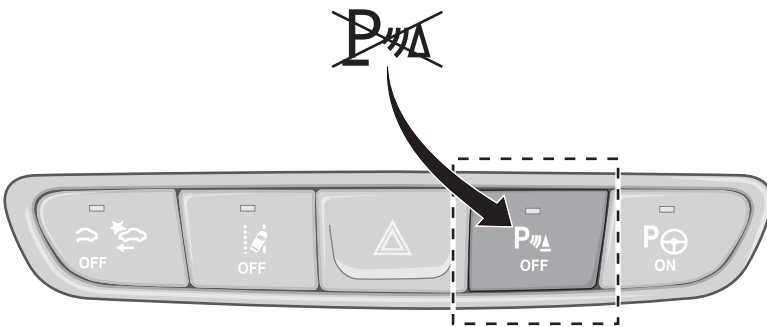
2



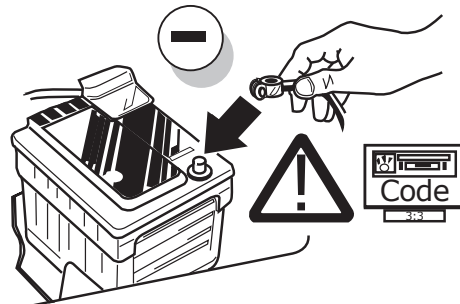
3



19



20

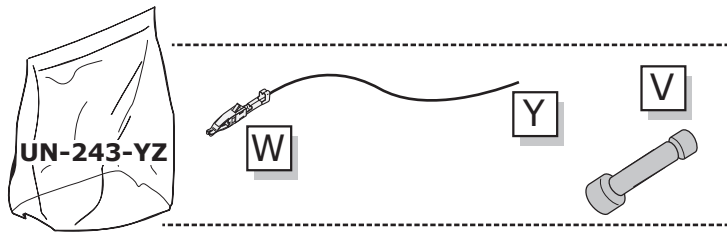


21

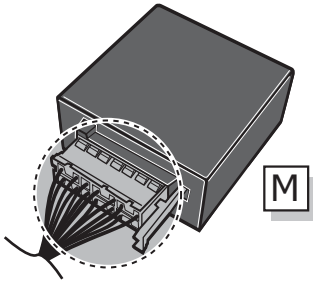
TEST ALL THE CIRCUITS WITH A TEST DEVICE WITH THE CORRECT POWER LOAD FOR EACH FUNCTION. A TEST DEVICE WITH LED'S CANNOT BE USED FOR THIS PURPOSE.

# UN-243-YZ Reverse lamp pre-wire extension

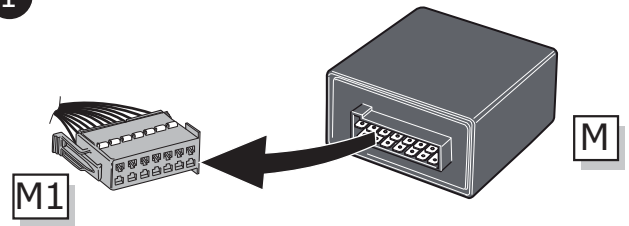
⚠ MAX = 21W



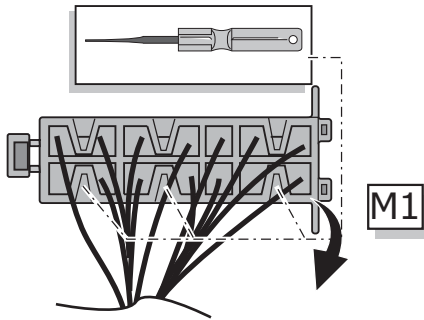
A



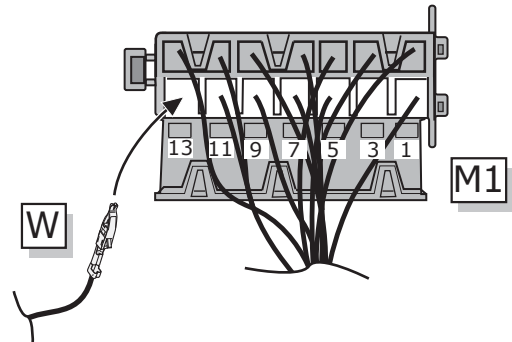
1



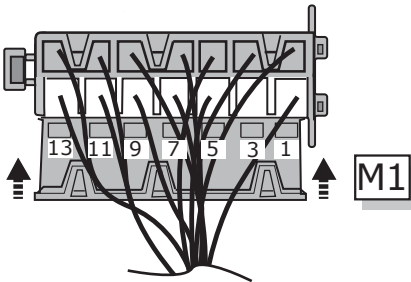
2



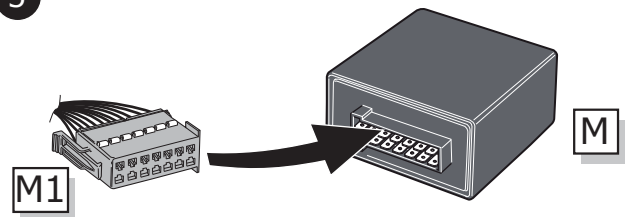
3



4

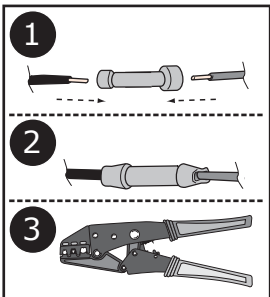


5



B

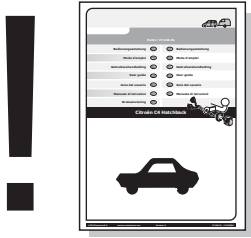
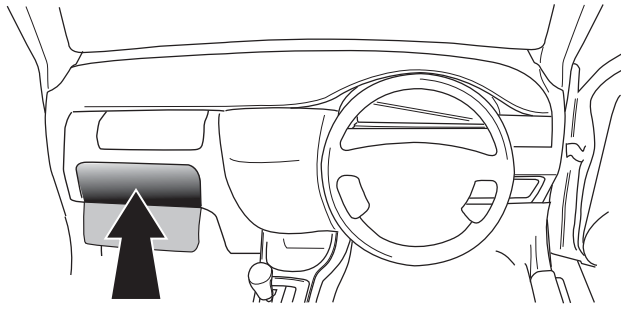
⚠ MAX = 21W



**INFO**

REINSTALL TRIM.

22



**User guide**



**INFO**

SOCKET CONNECTION

DIN/ISO 1724							
	1/L	2	3/31	4/R	5/58-R	6/54	7/58-L
Pmax	21W	21W		21W	42W	3x21W	42W
Colour	Yellow	Blue	White	Green	Brown	Red	Black