

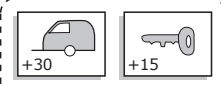
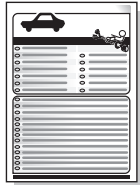
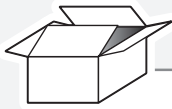
**Citroën C4 Cactus 07/2014 >> 02/2018**  
**Citroën C4 Cactus 03/2018 >>**

**Partnr.: PE-065-D1U**

- Fitting instructions electric wiring kit tow bar with 13-P socket up to DIN/ISO Norm 11446.
- We would expressly point out that assembly not carried out properly by a competent installer will result in cancellation of any right to damage compensation, in particular those arising by virtue of the product liability act.
- Contents of these kits and their fitting manuals are subject to alteration without notice, please ensure that these instructions are read and fully understood before commencing installation.
- Do not overload circuits; the maximum loads per connection are detailed in this manual.
- Attention! Before Installation, please read this manual carefully and inform your customer to consult the vehicle owners manual to check for any vehicle modifications required before towing.
- In the event of functional problems, troubleshooting must be limited to about 0.5 hours, contact the technical support:  
[ukts@ecs-electronics.com](mailto:ukts@ecs-electronics.com) / 07440 202 052.



# Part list



Additional Power Supply PE-064-ZZ



L1



1x



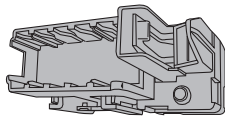
1x

M



X

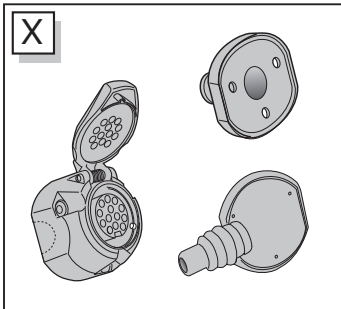
E



L2

L2

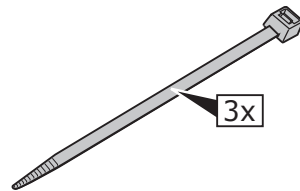
L1



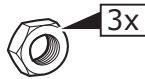
X



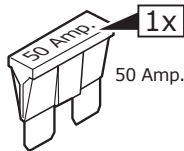
M



3x



3x

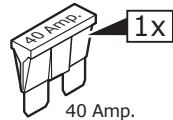


1x

50 Amp. MAXIFUSE

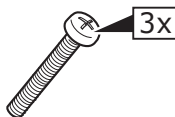


1x

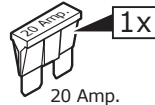


1x

40 Amp.

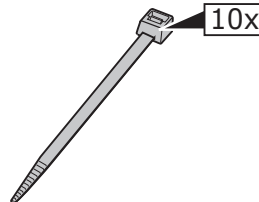


3x



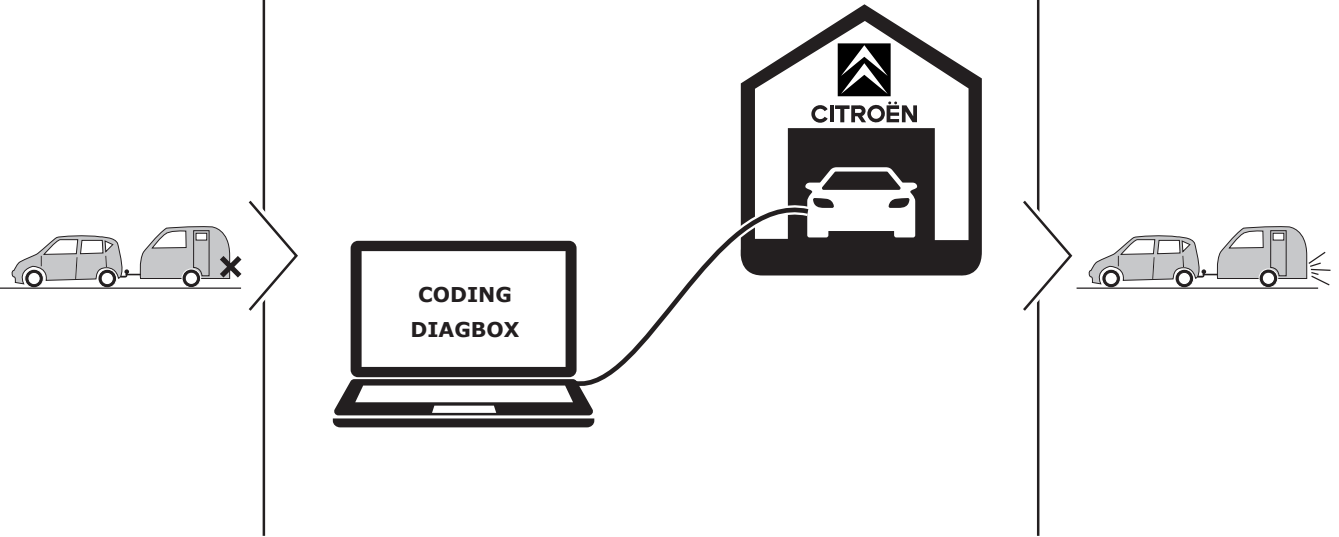
1x

20 Amp.



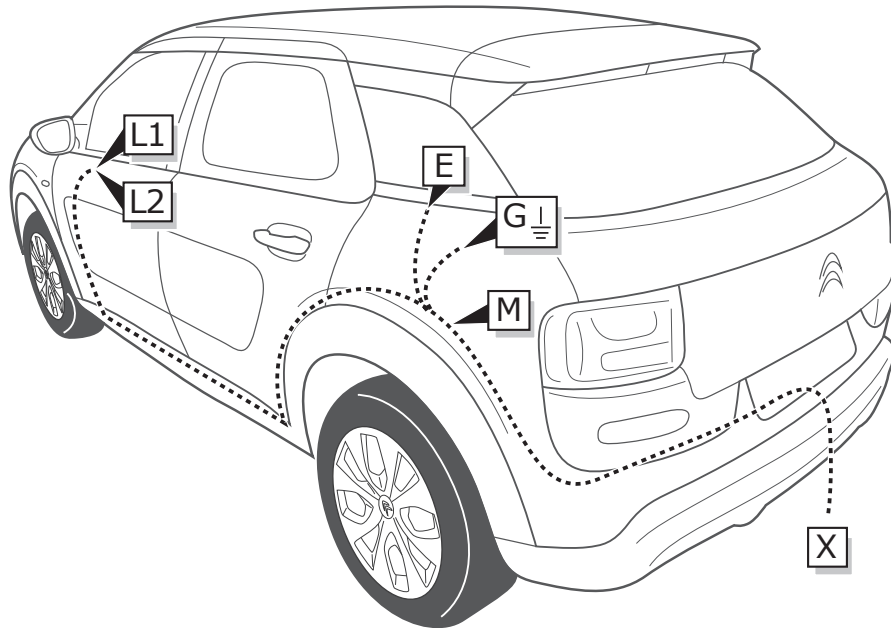
10x

**INFO**

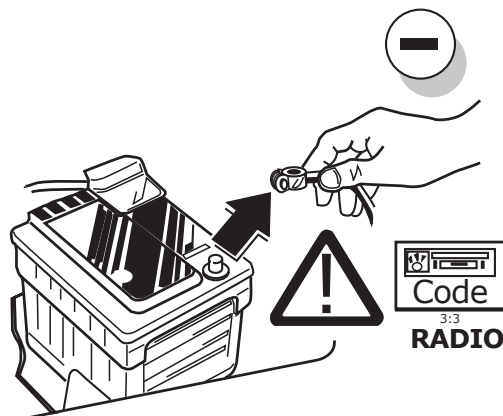


**Coding required for trailer lighting functions**

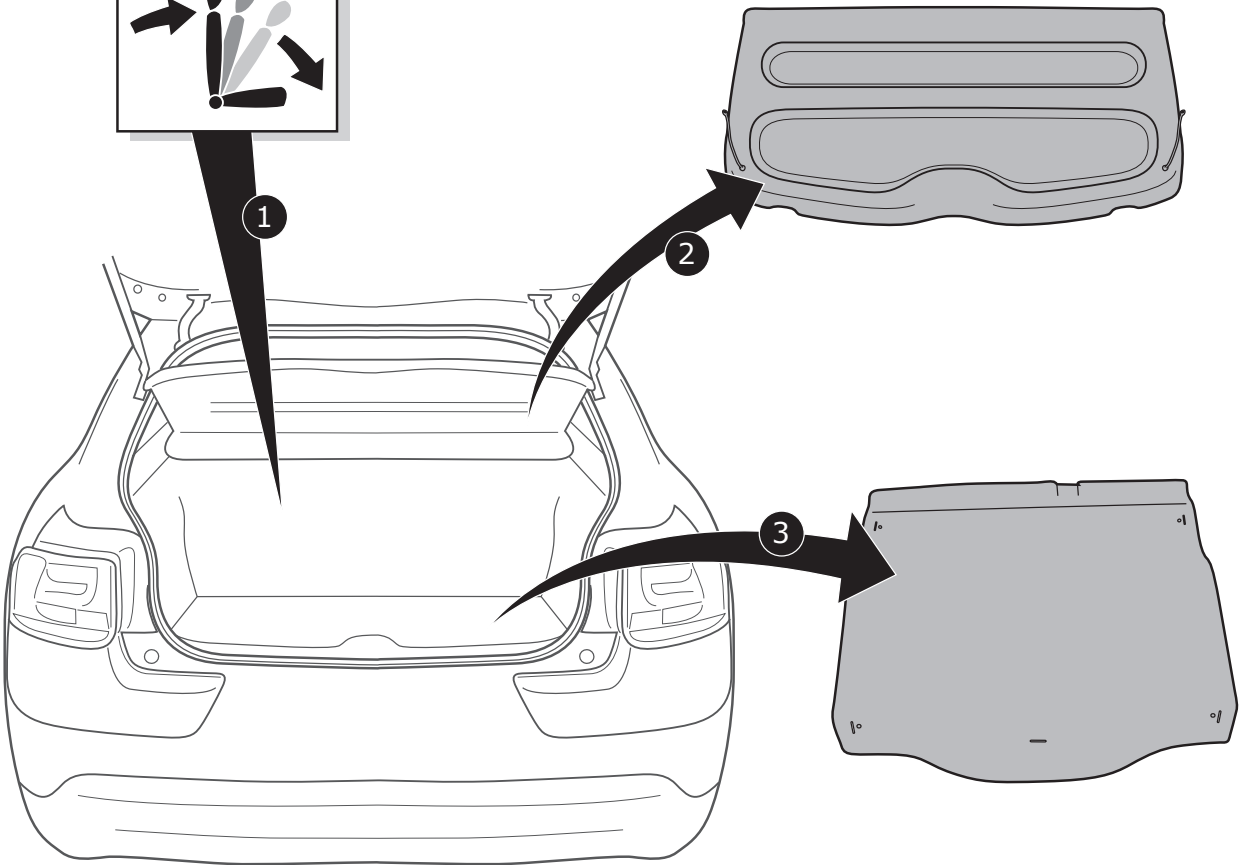
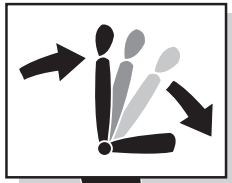
**ROUTING**



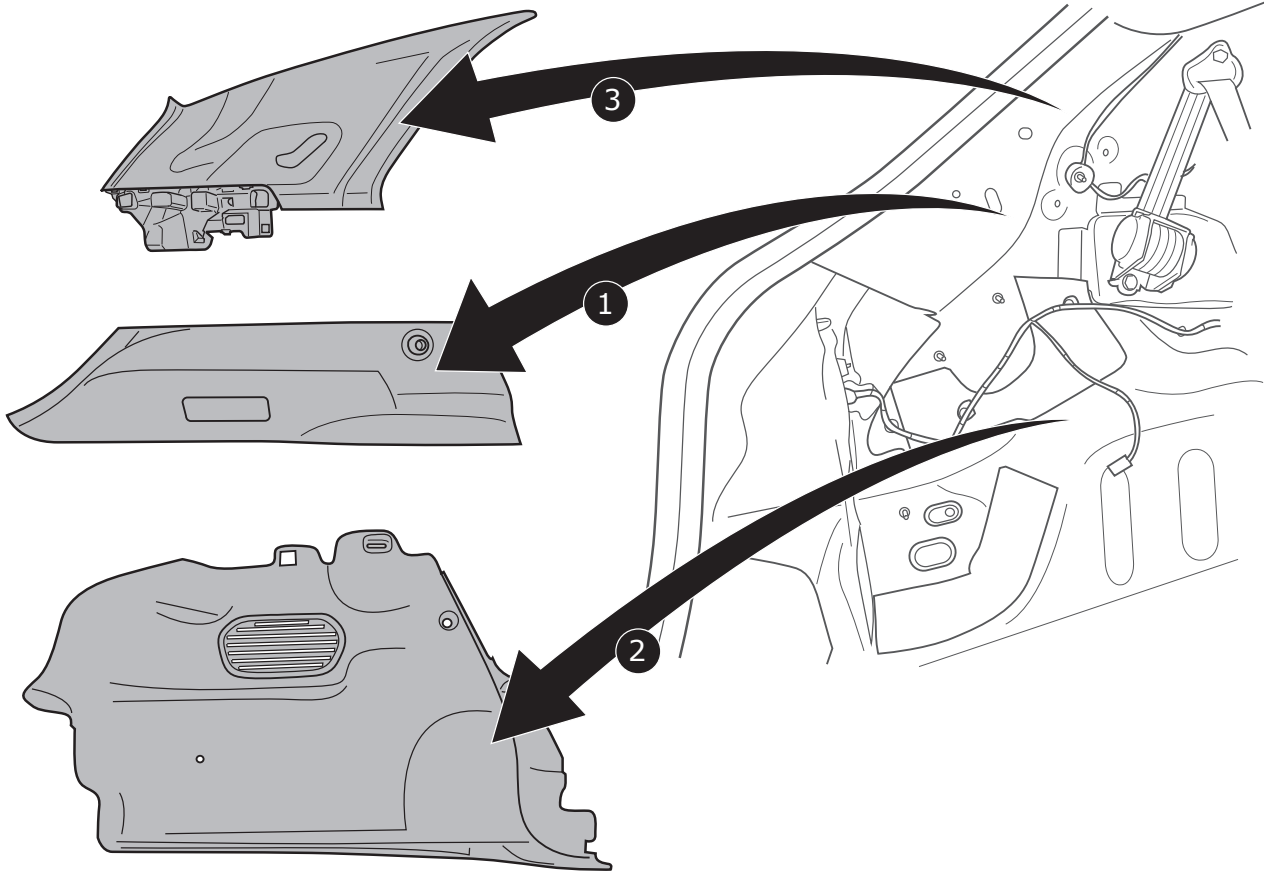
**1**



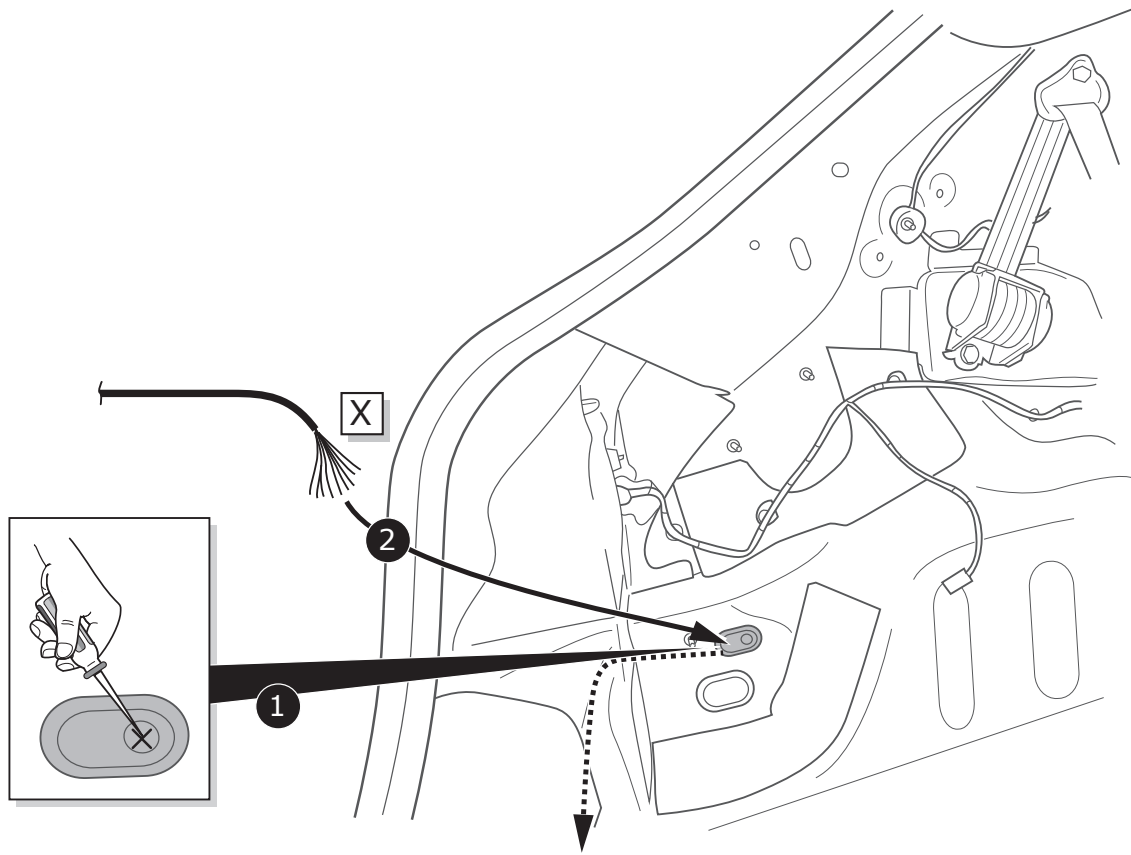
2



3

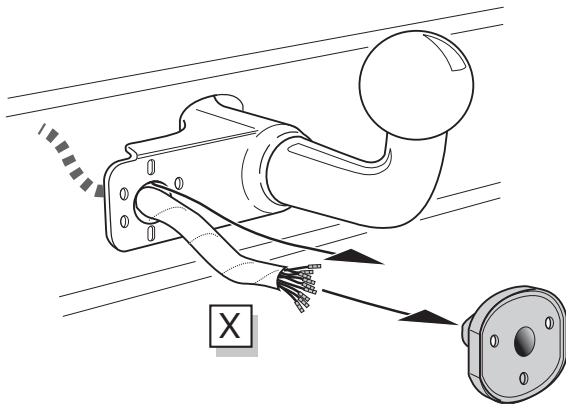


4

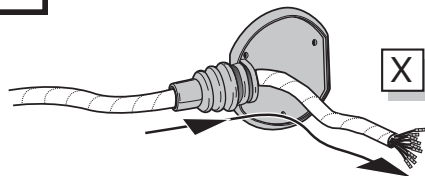


A

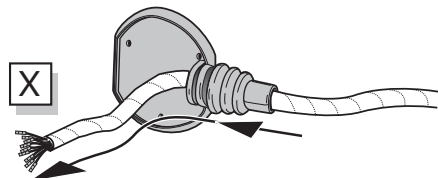
Option 1



Option 2



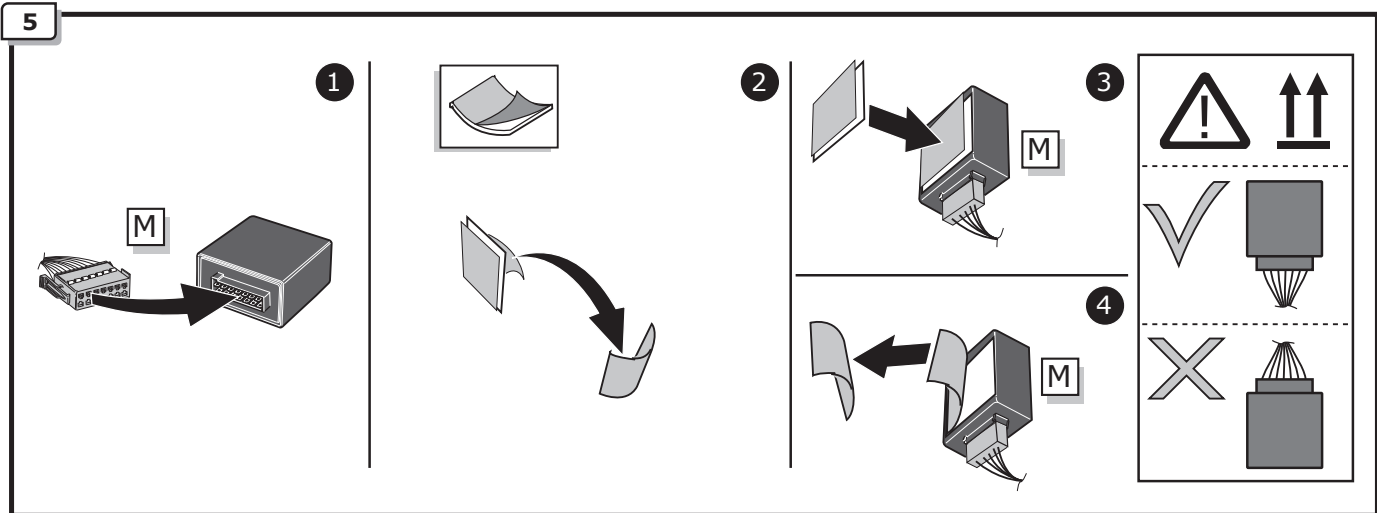
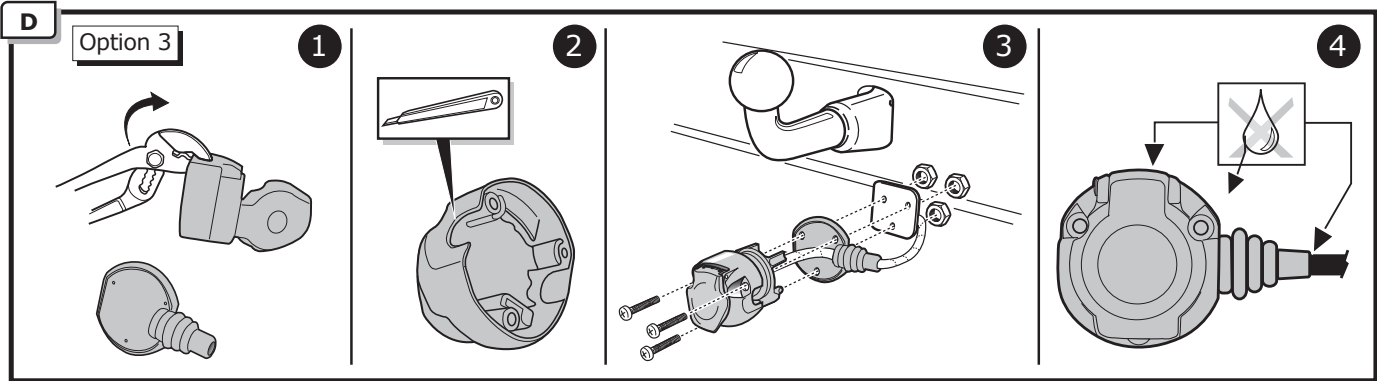
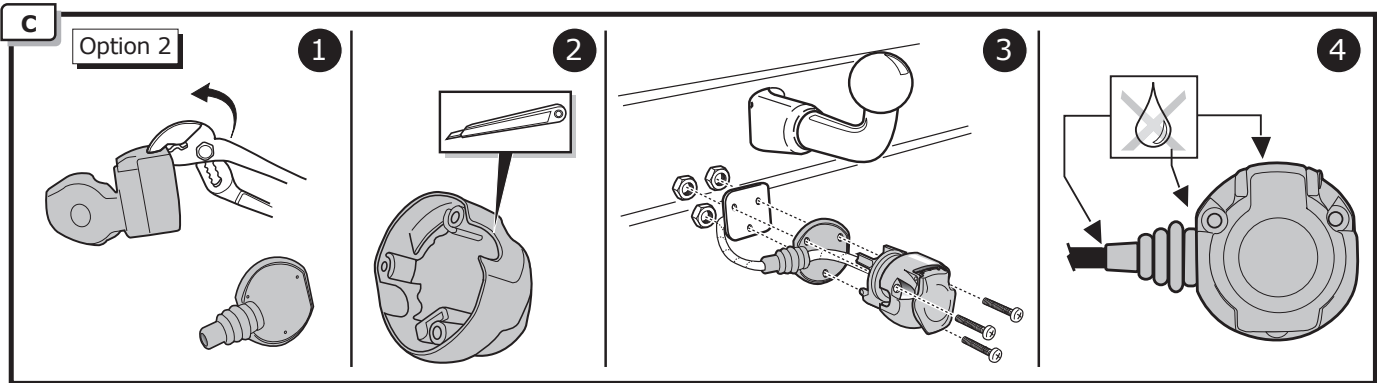
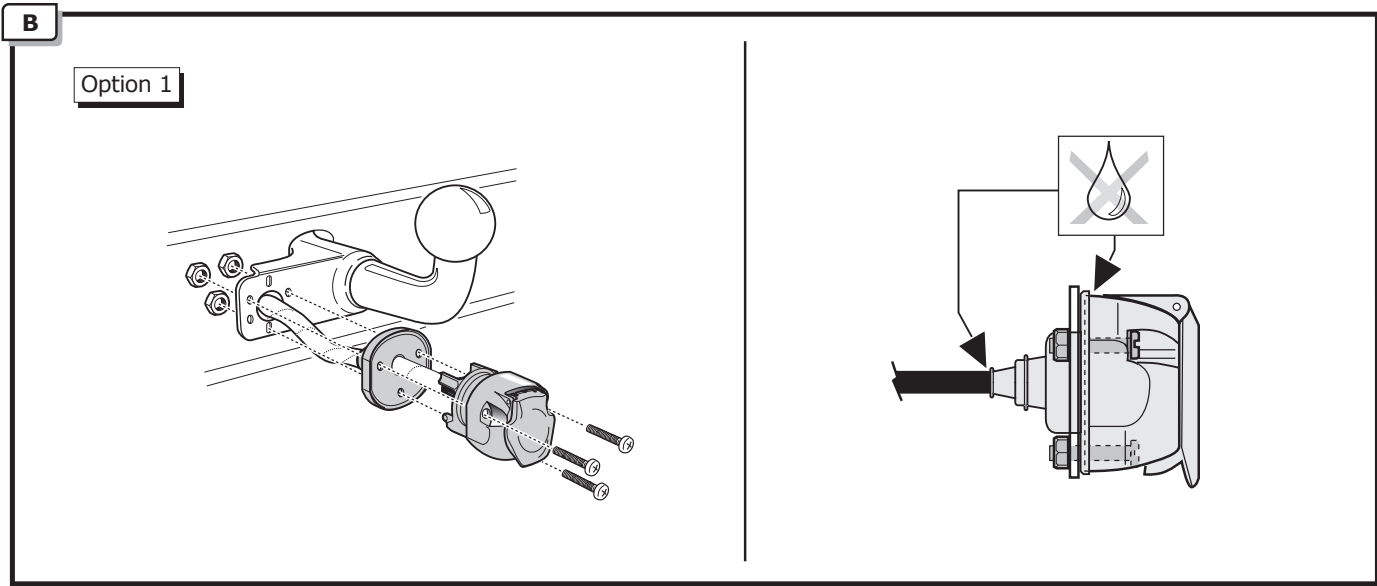
Option 3



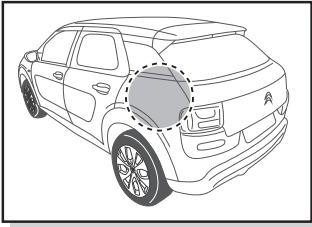
INFO

SOCKET CONNECTION 

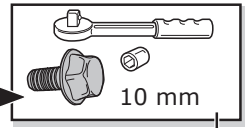
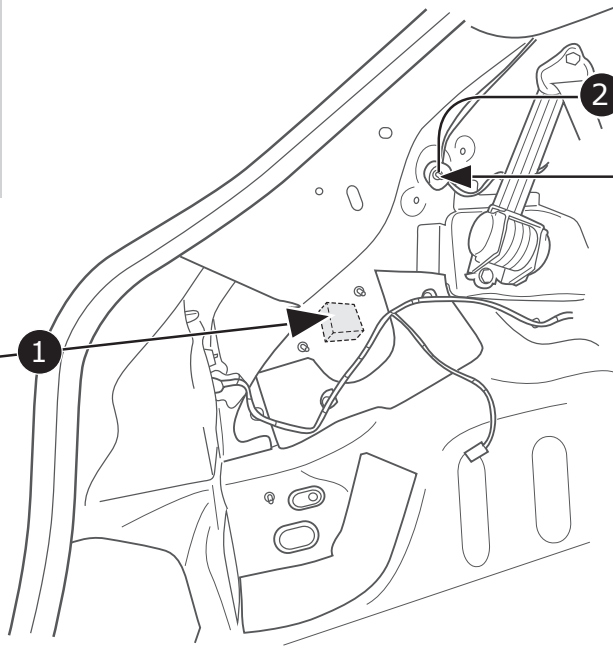
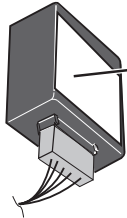
Page 21



6

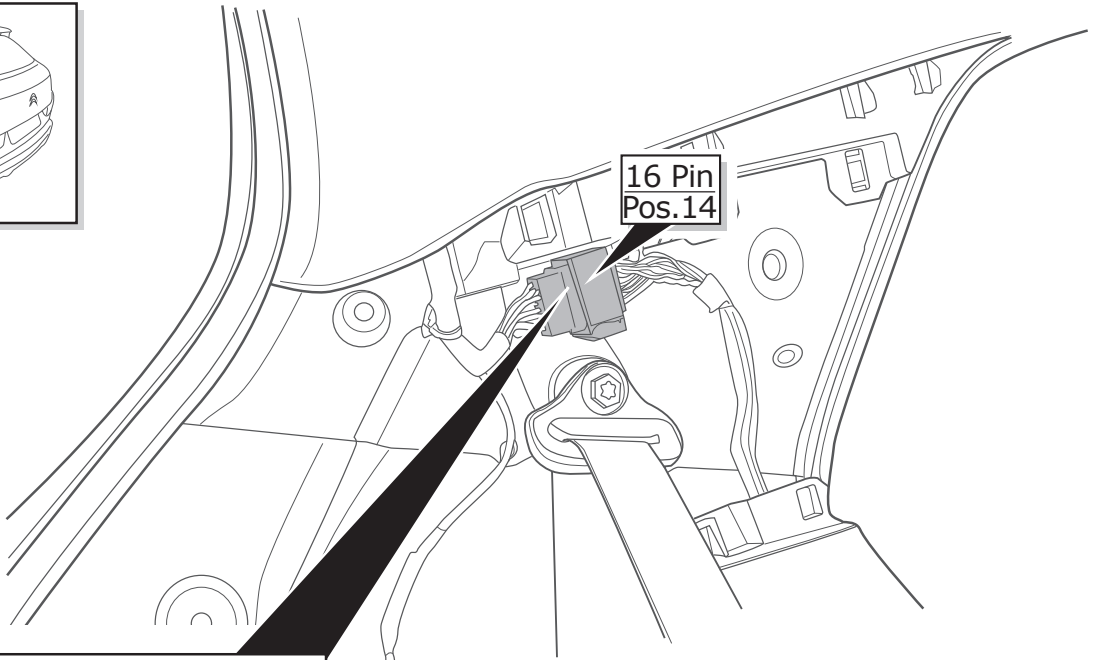
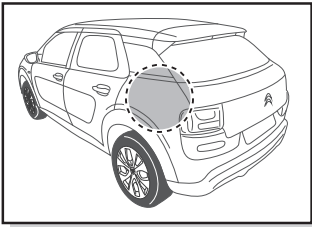


M

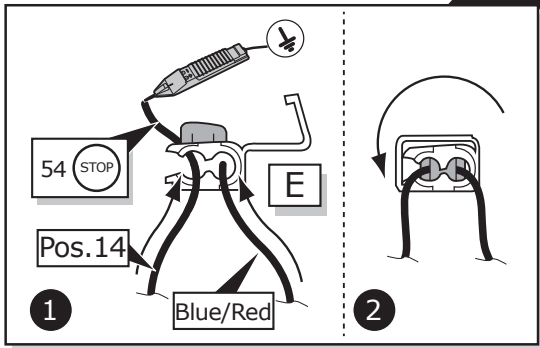


G

7

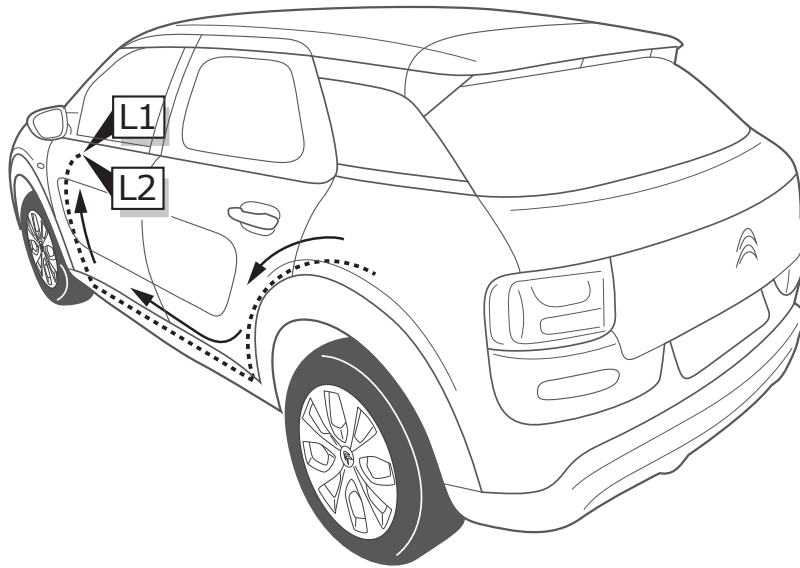


16 Pin  
Pos. 14

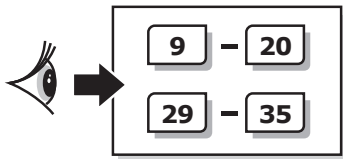


1

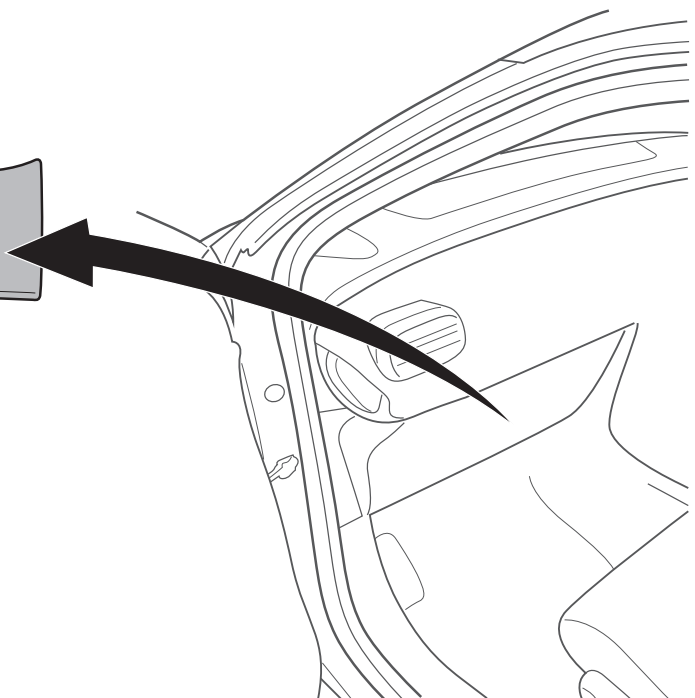
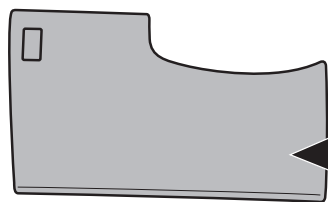
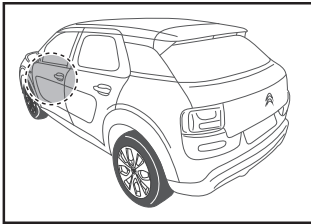
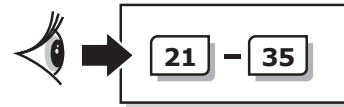
2



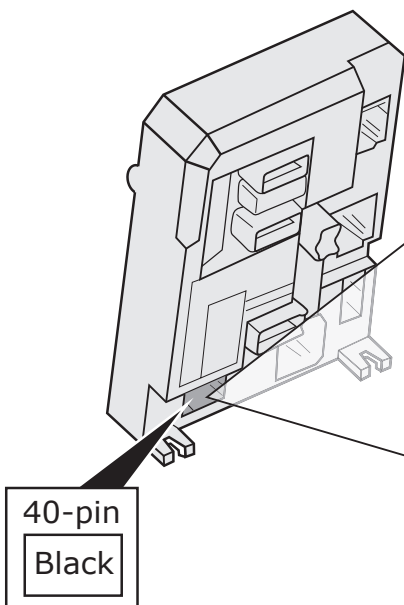
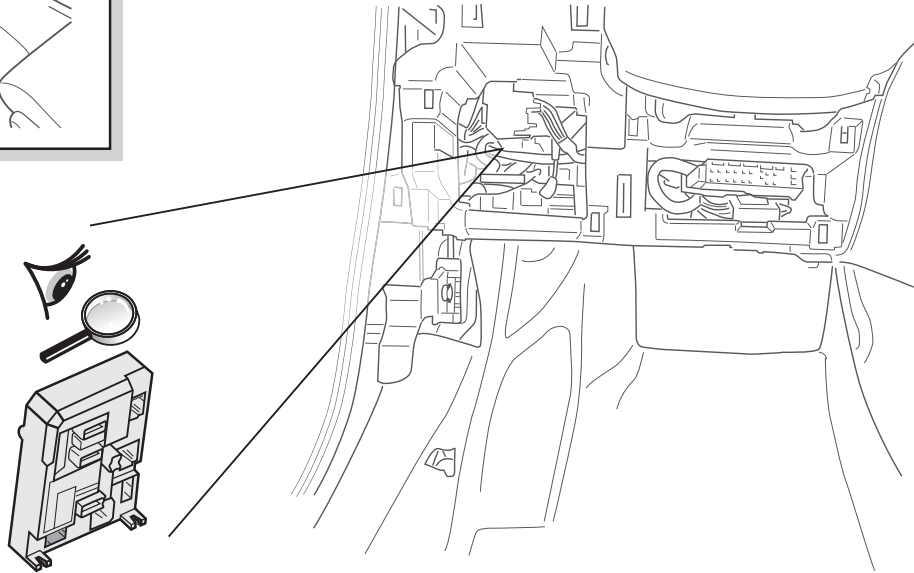
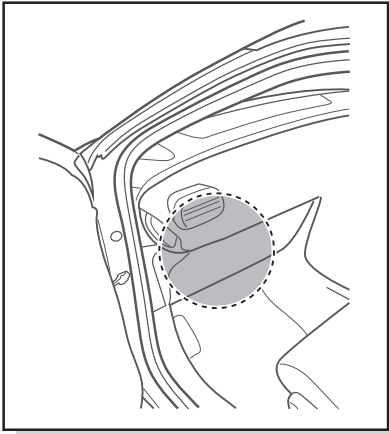
Citroën C4 Cactus 07/2014 >> 02/2018



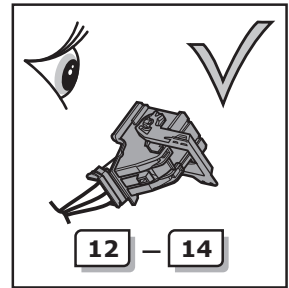
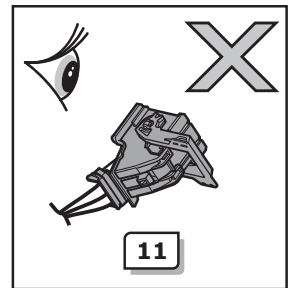
Citroën C4 Cactus 03/2018 >>



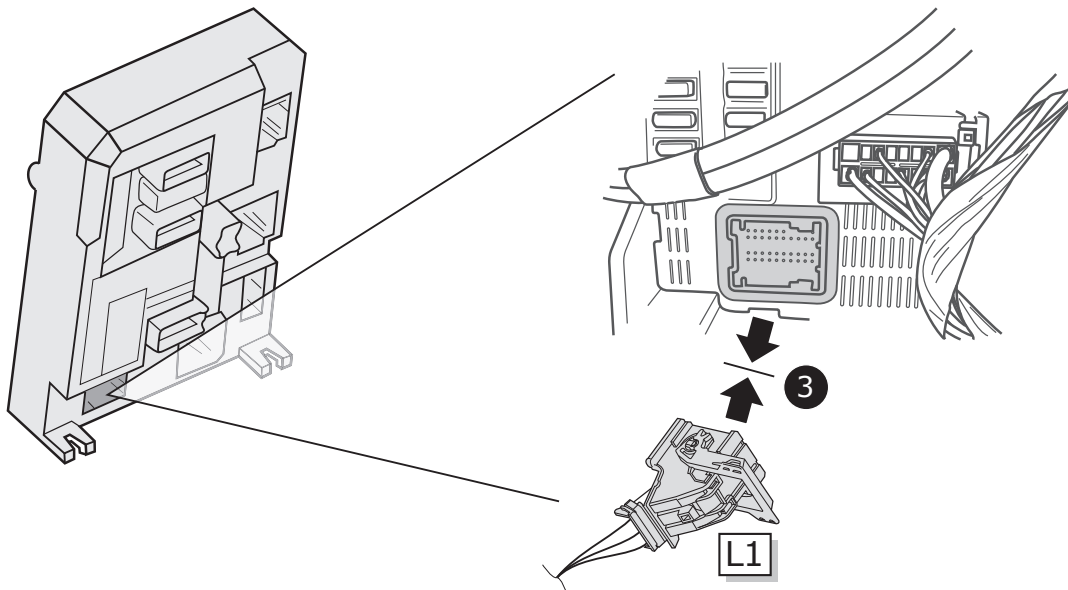
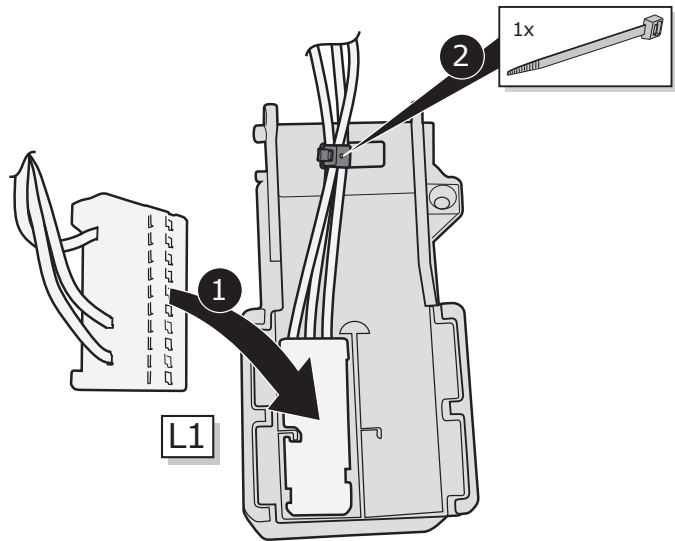
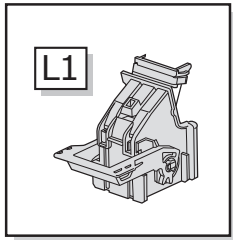
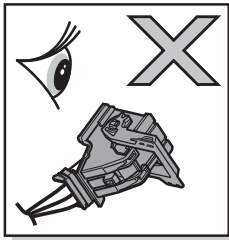




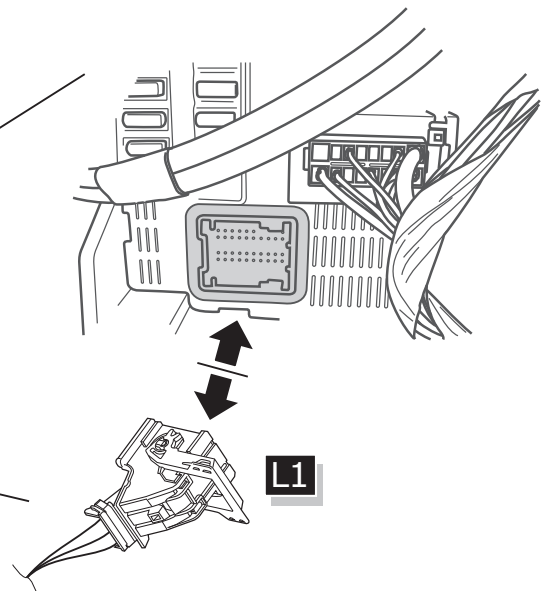
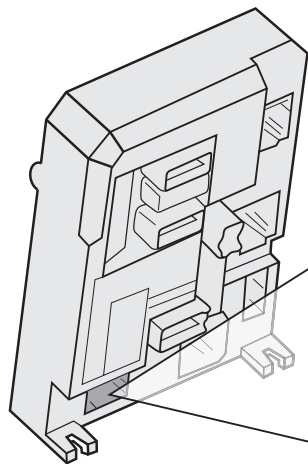
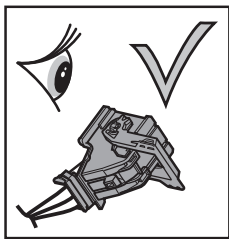
40-pin  
Black

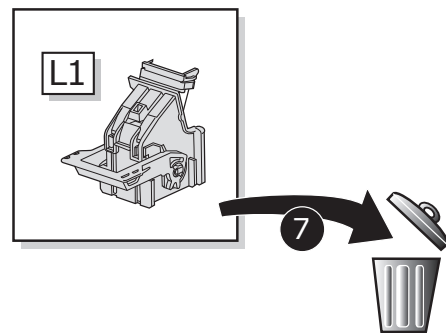
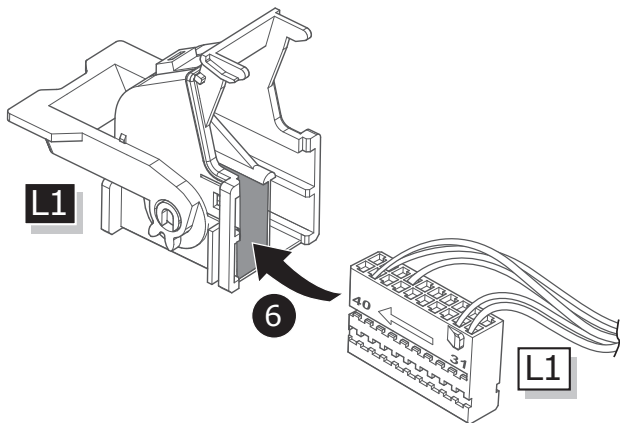
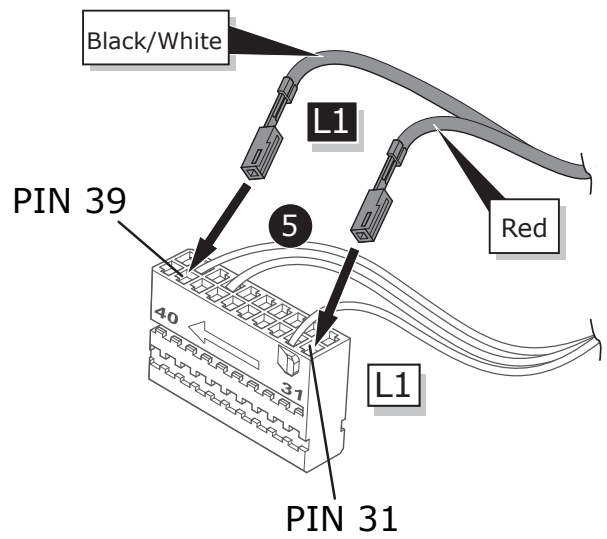
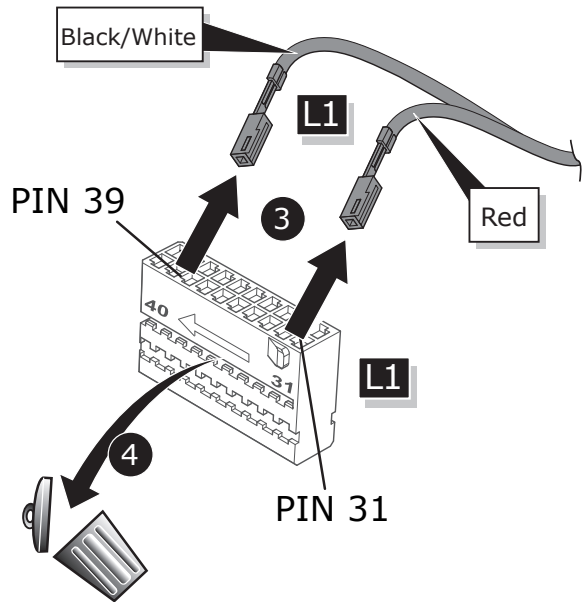
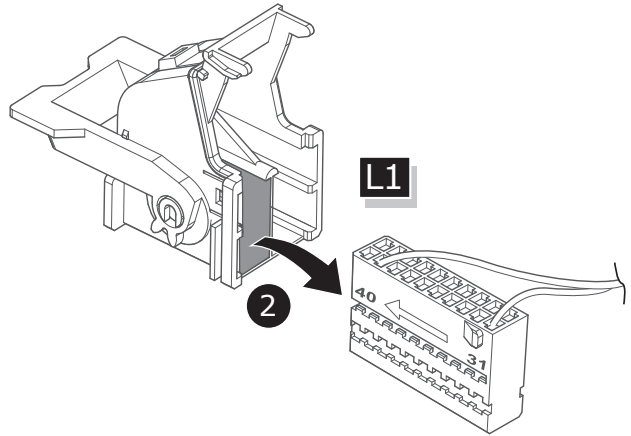
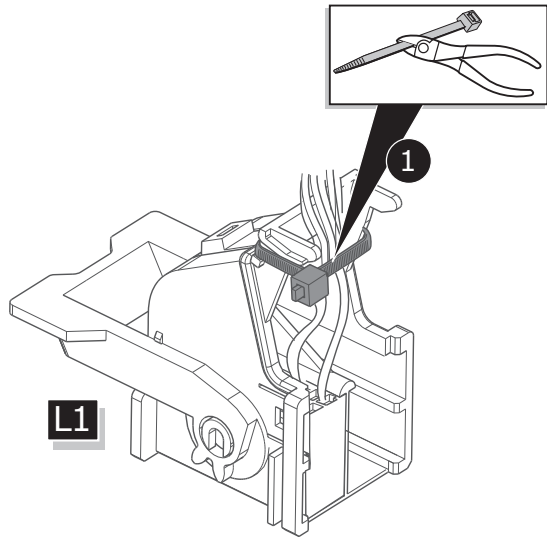


11

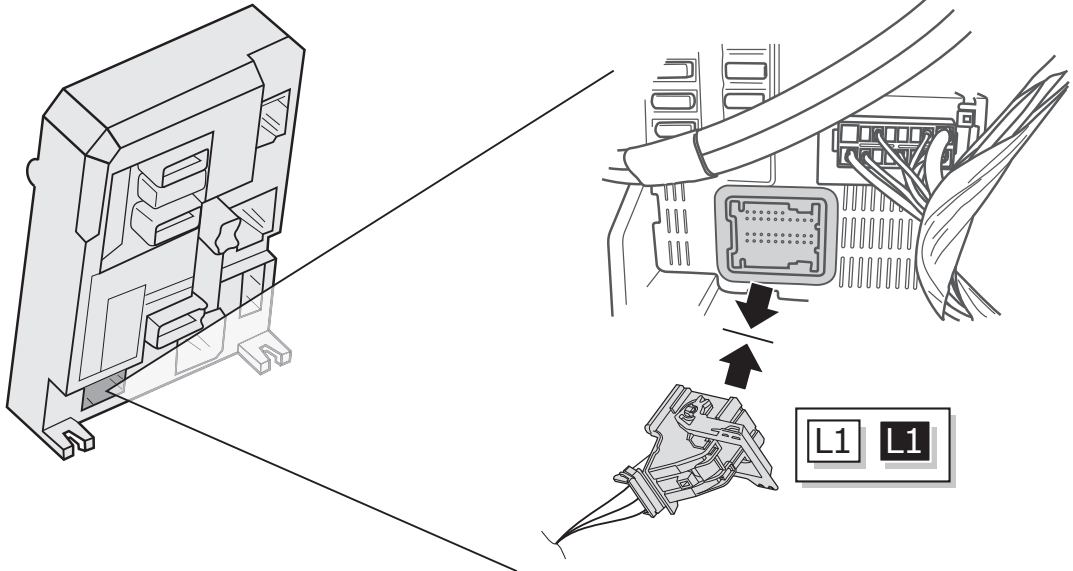


12

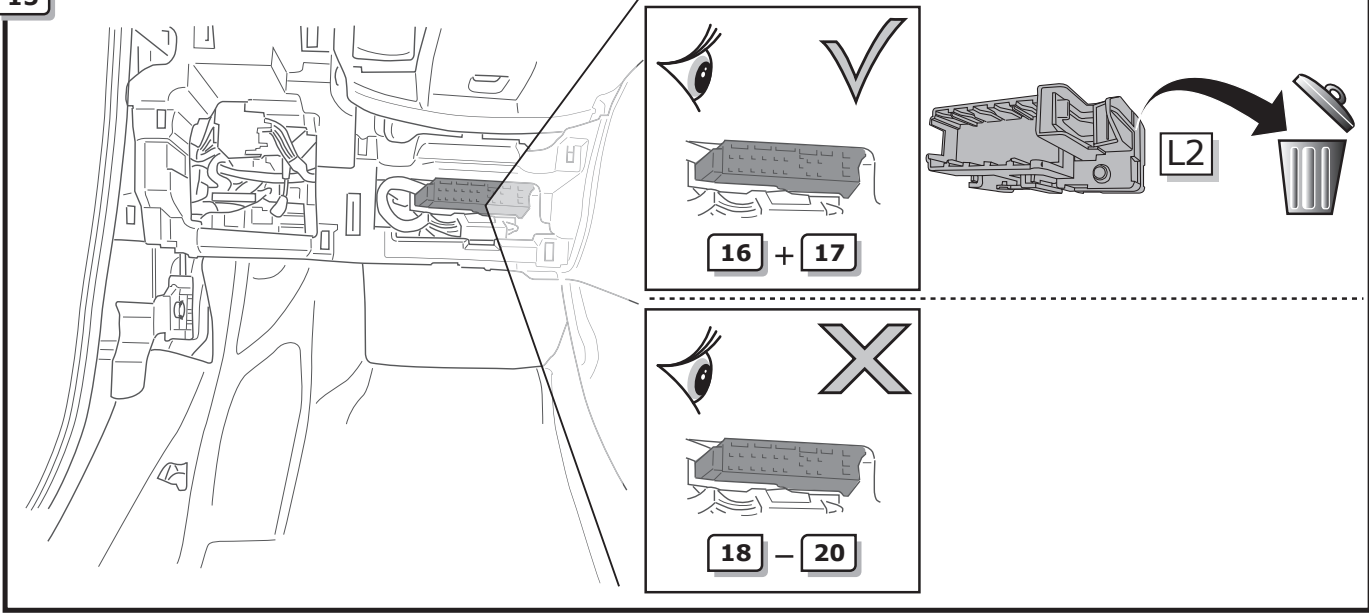




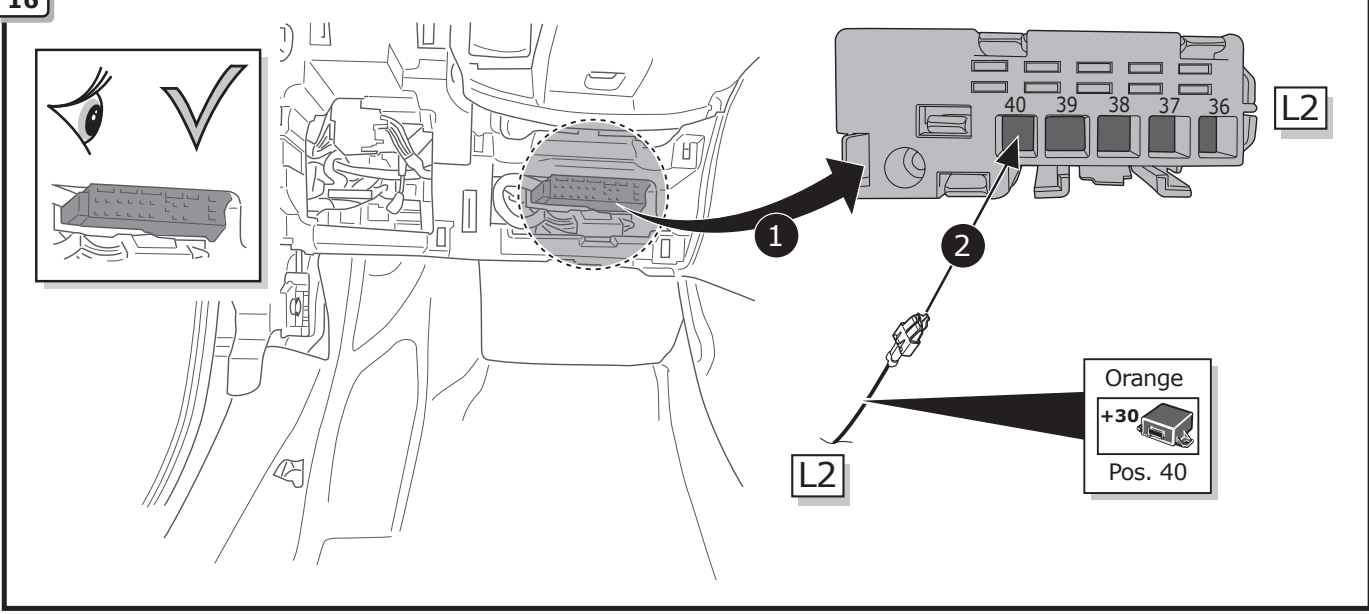
14



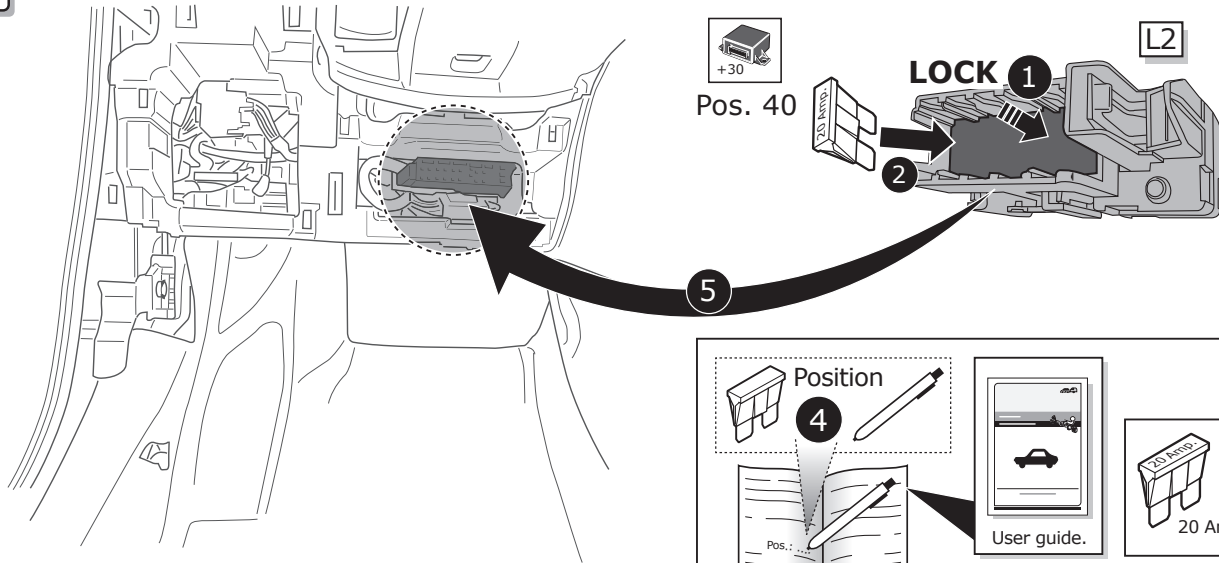
15



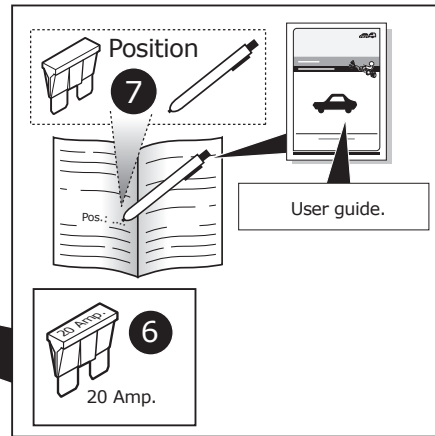
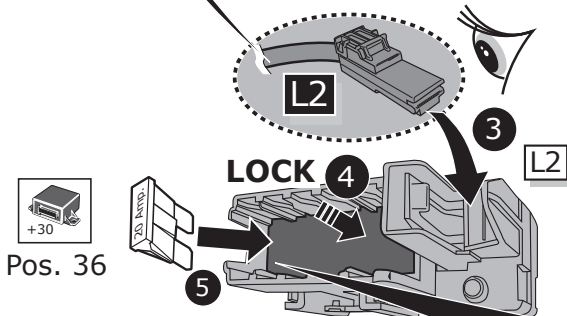
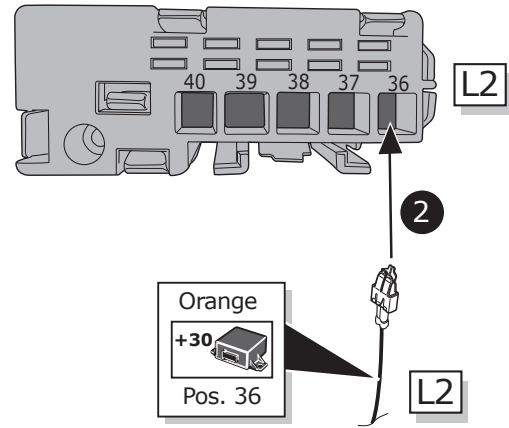
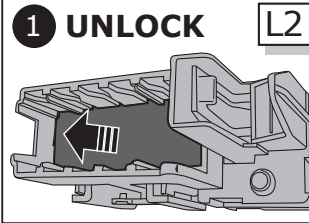
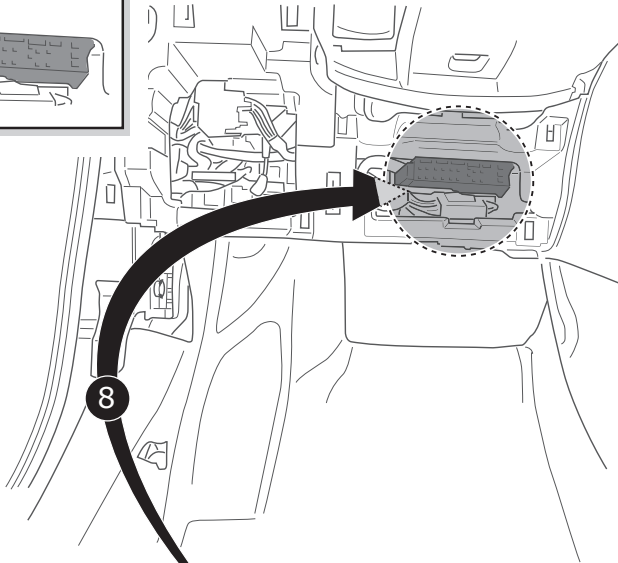
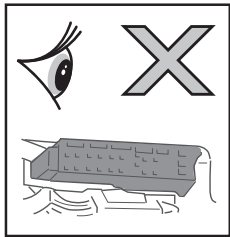
16



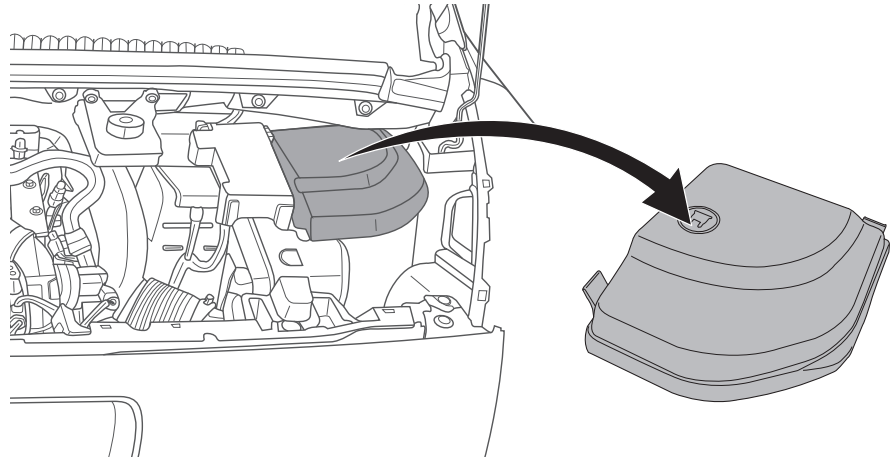
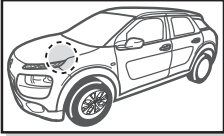
17



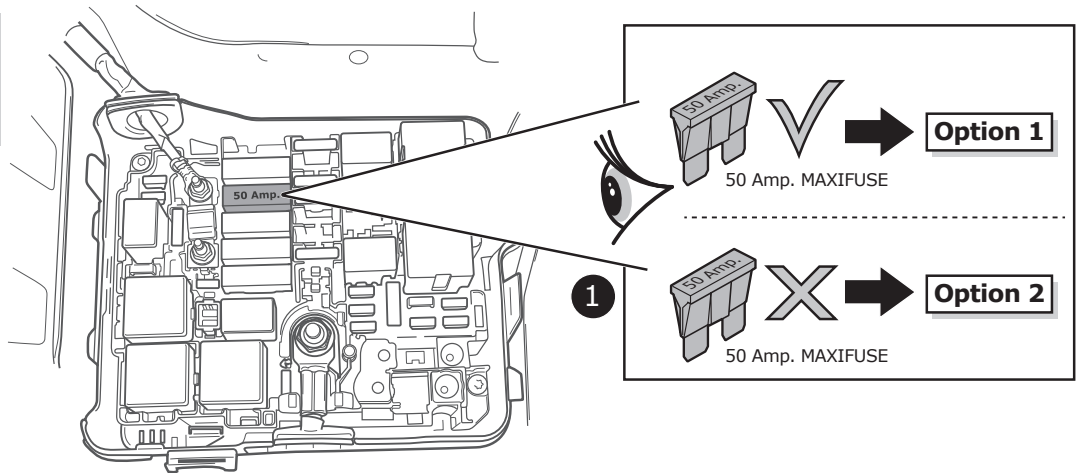
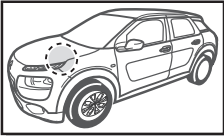
18



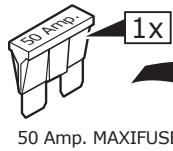
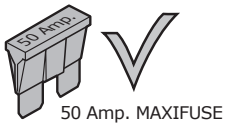
19



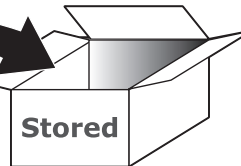
20



Option 1

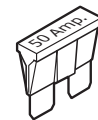
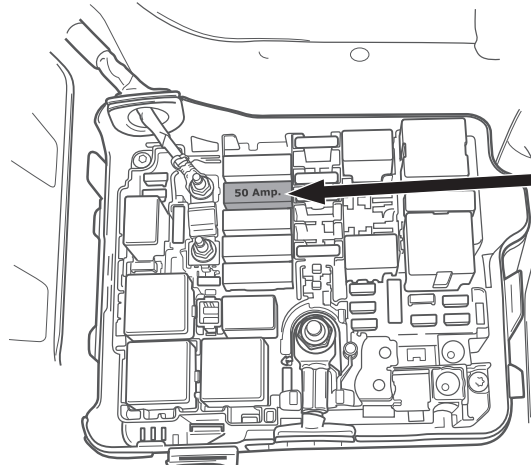
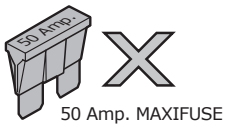


50 Amp. MAXIFUSE



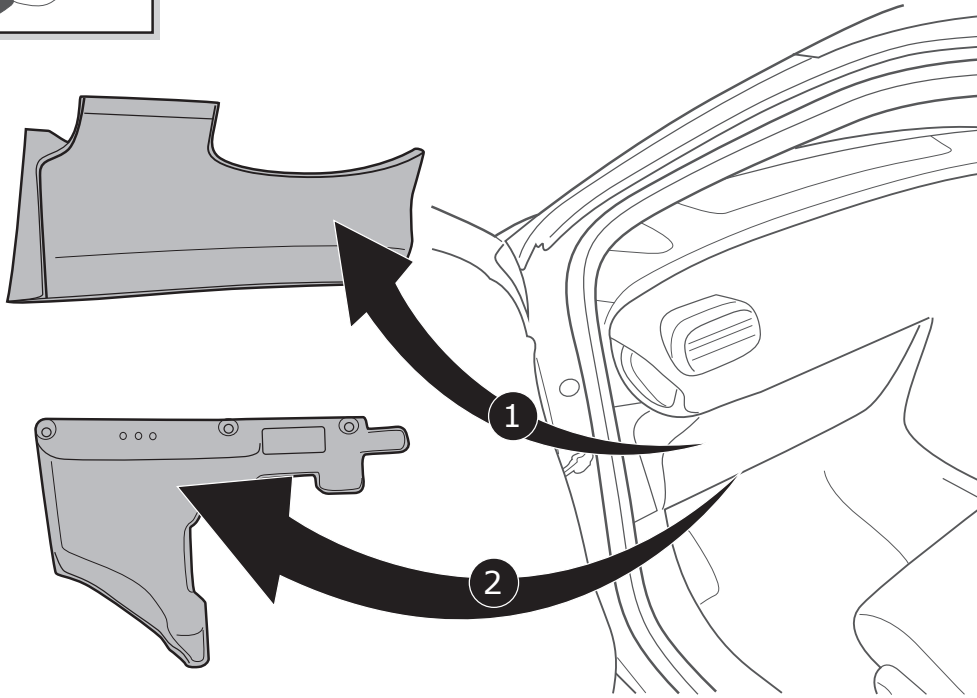
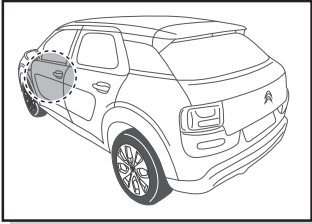
Stored

Option 2

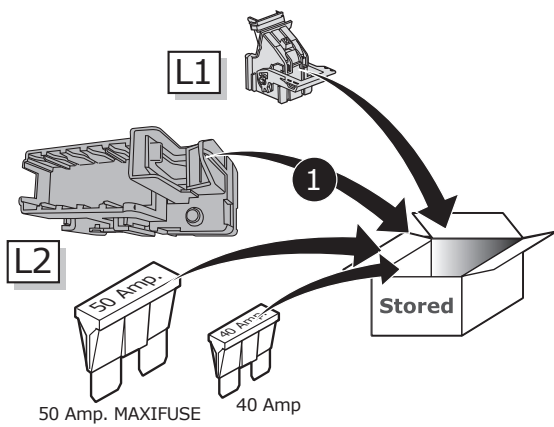


50 Amp. MAXIFUSE

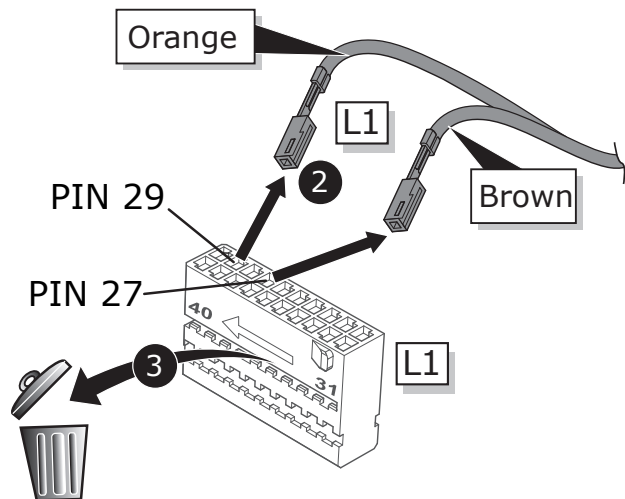
21



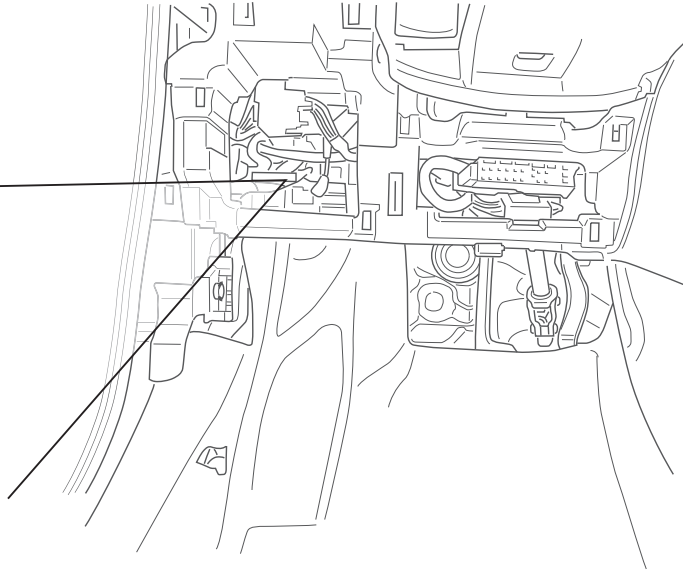
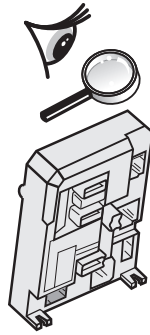
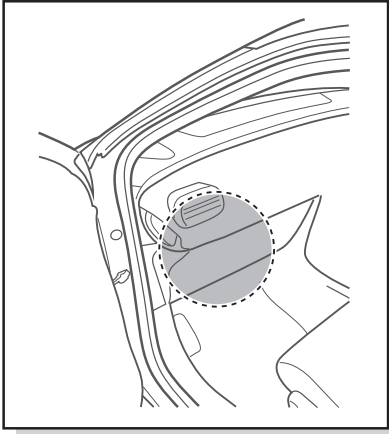
22



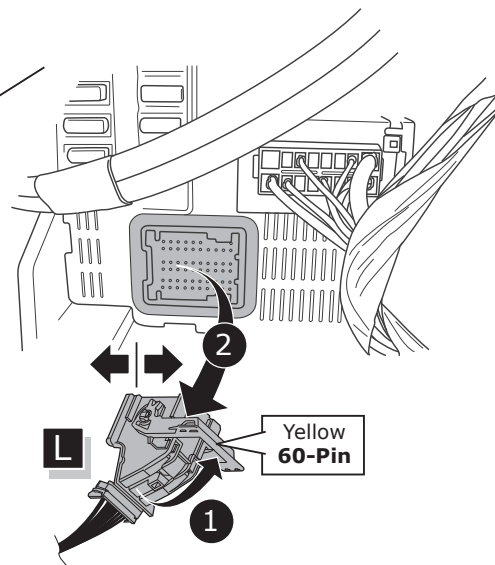
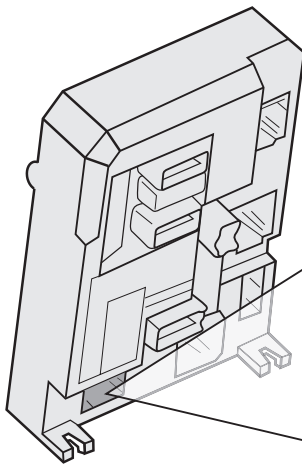
If not used



23

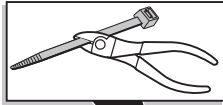


24

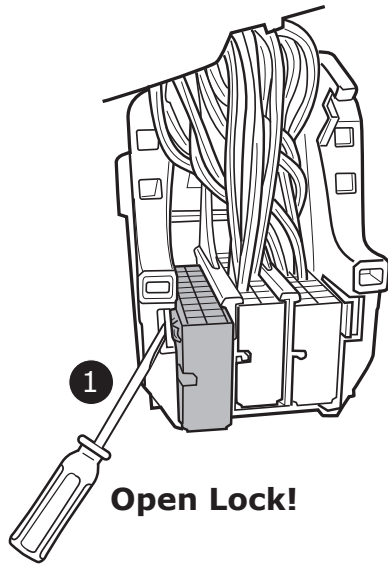
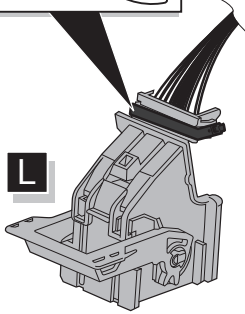




25



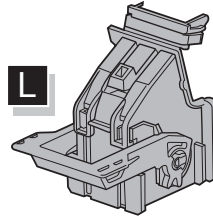
L



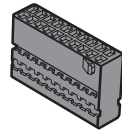
1

Open Lock!

L

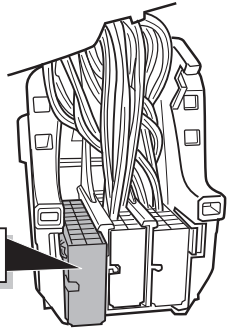


2



L1

Brown



26

⚠	Pin 47 → ←	Brown
	Pin 49 → ←	Orange

Orange

L1

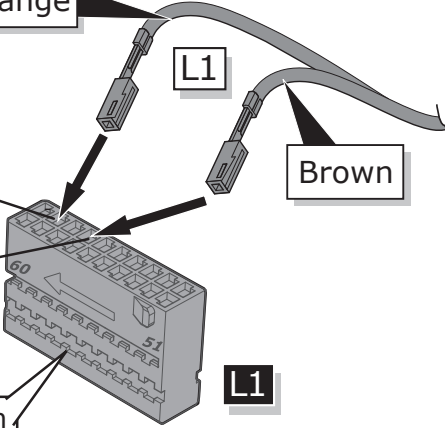
Brown

PIN 49

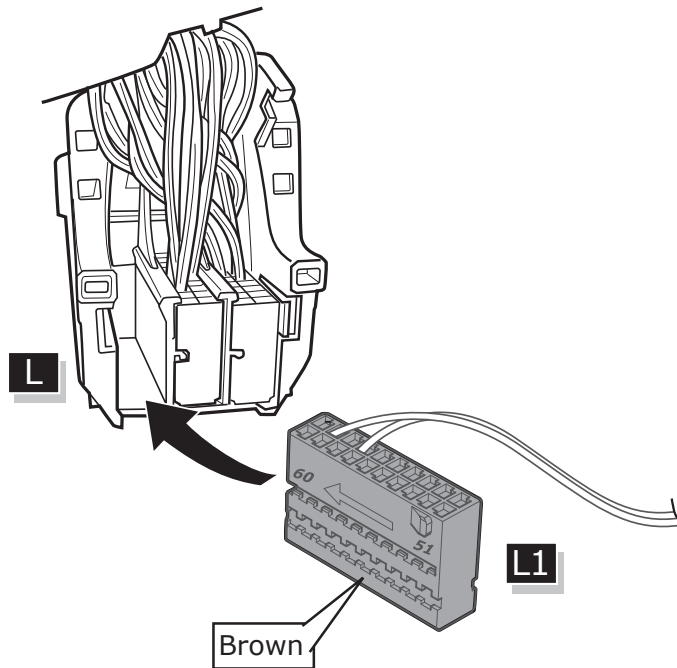
PIN 47

Brown

L1



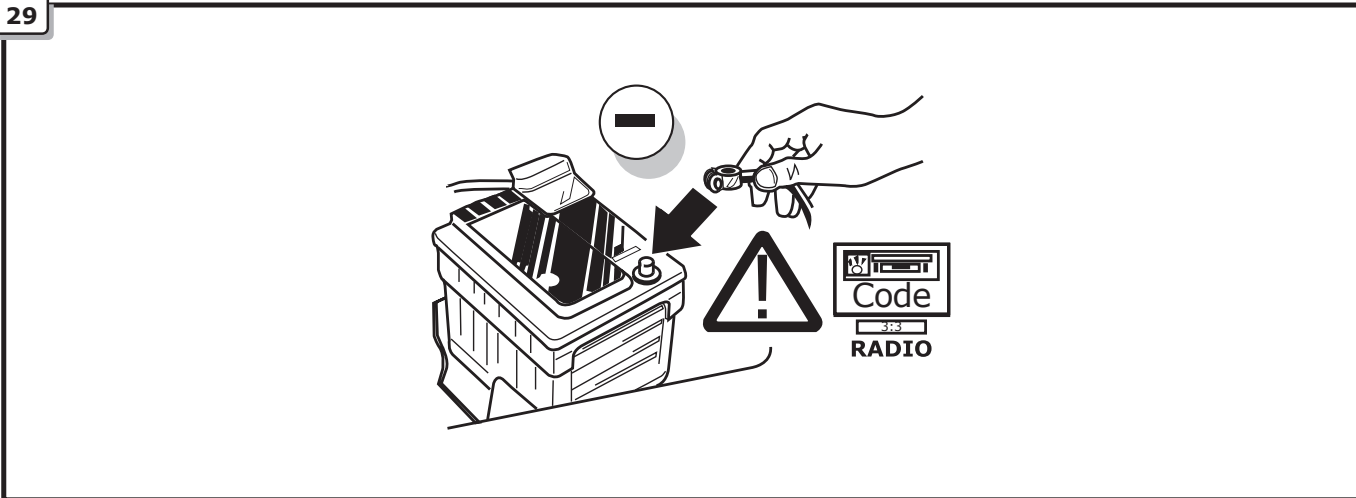
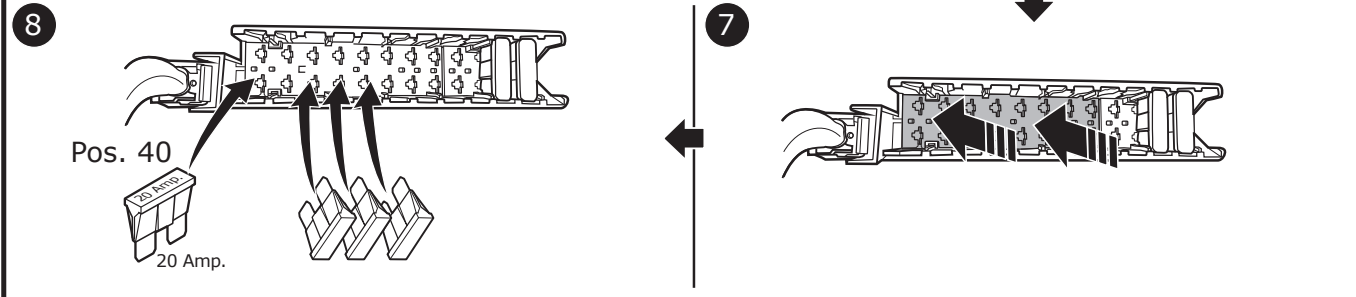
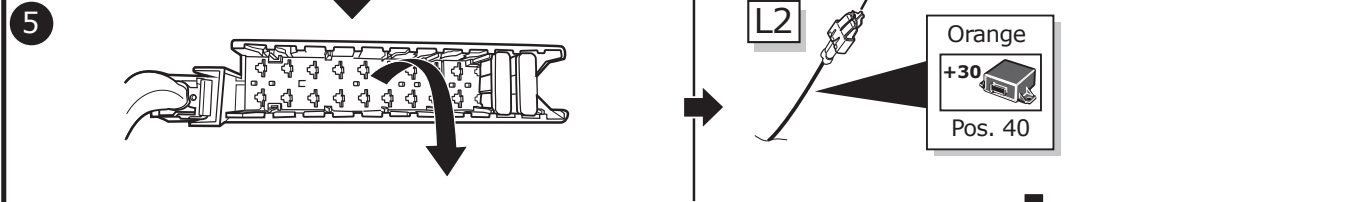
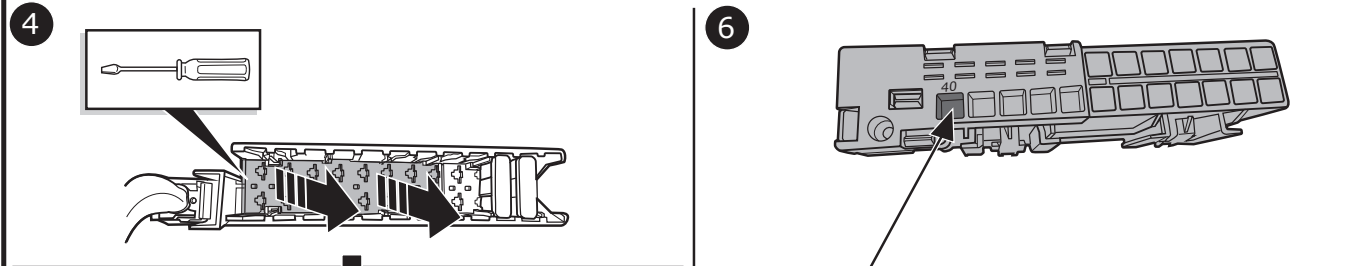
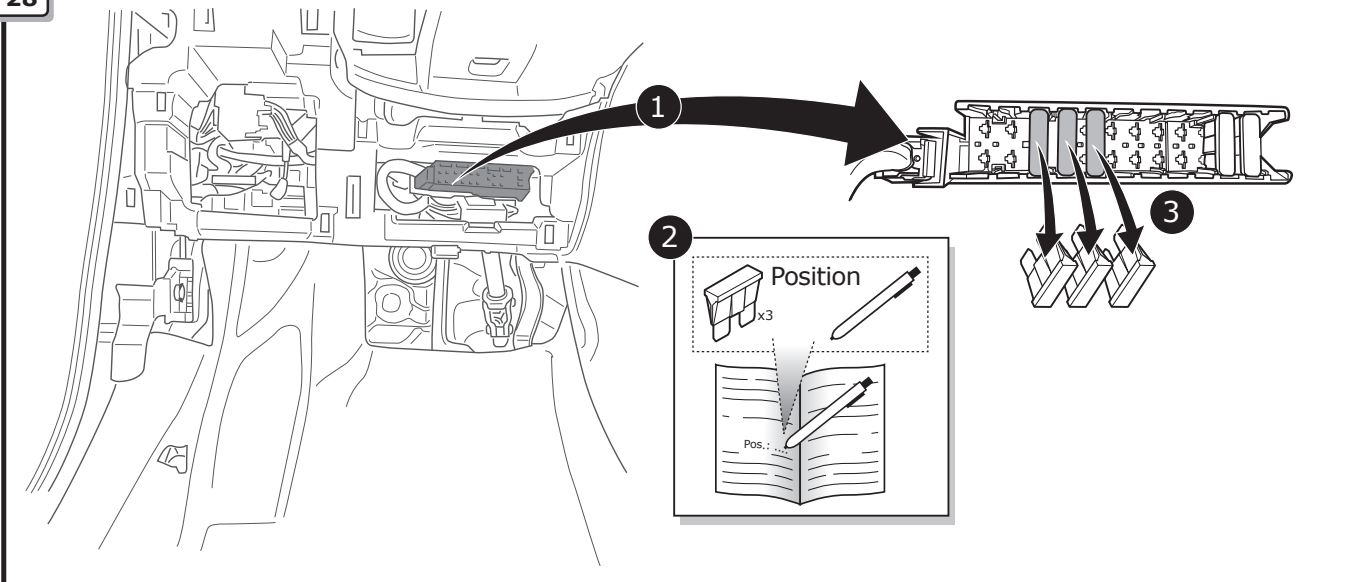
27

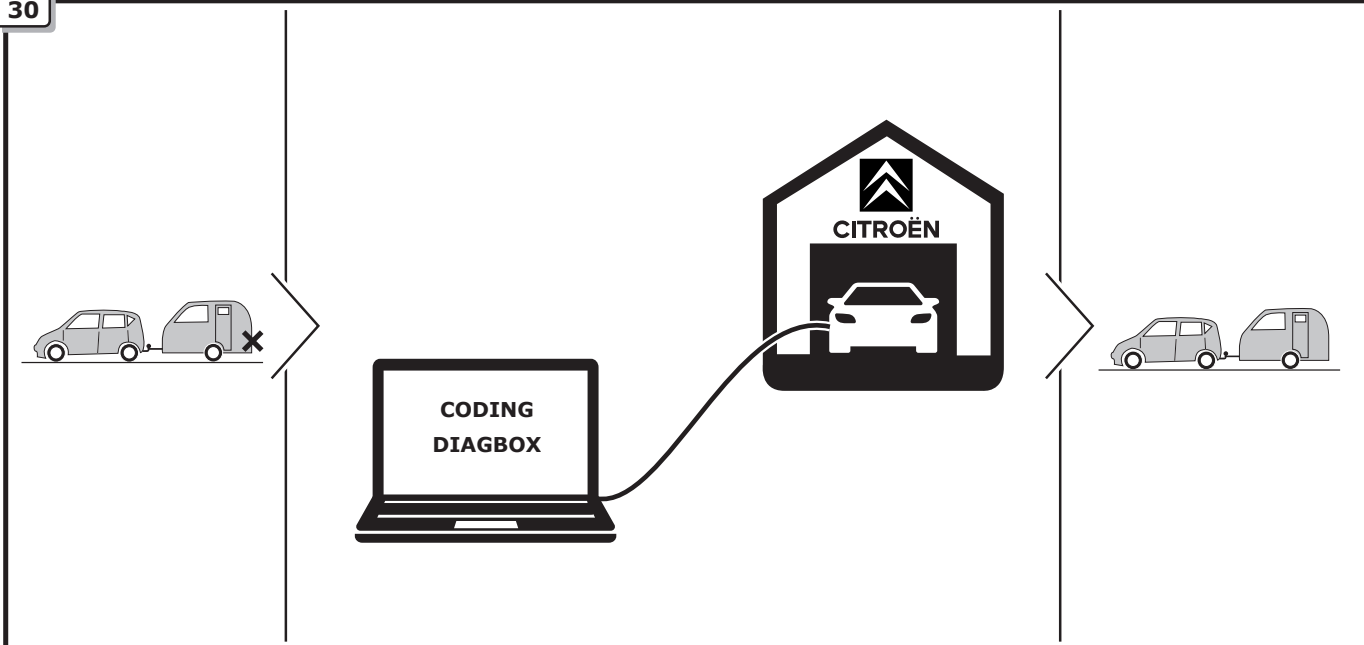


L

Brown

L1

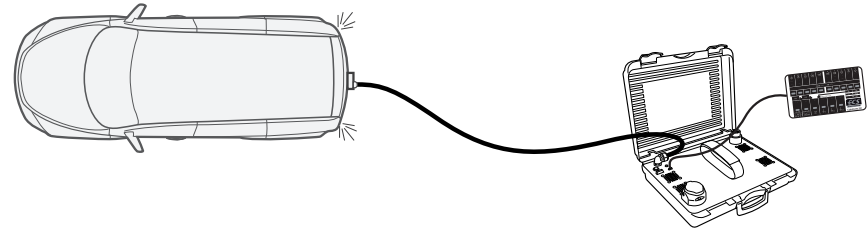
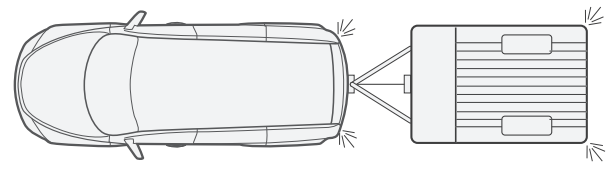
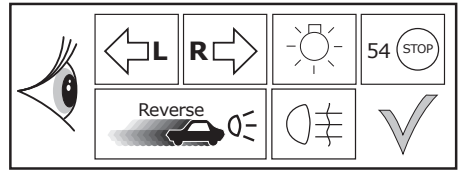




The activation of the trailer functions has to be carried out using the **CITROËN DIAGBOX** as follows:

- choose vehicle
- delivery
- equipment
- trailer control unit (BSR)
- installation of equipment

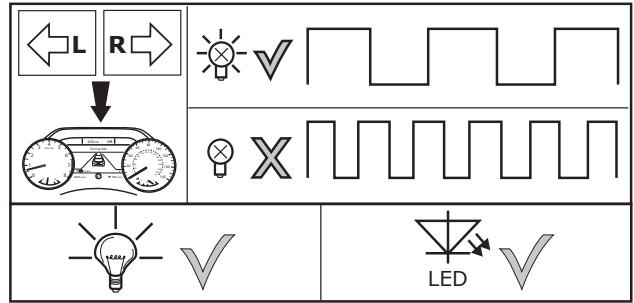
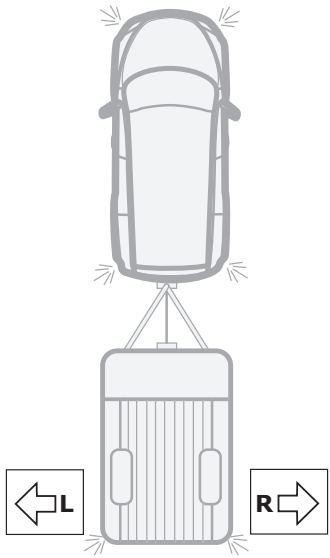
**Functional test**



**LIGHTMATE®**

**ECS** part no.  
**LIGHTMATE II**  
**LIGHTMATE III**

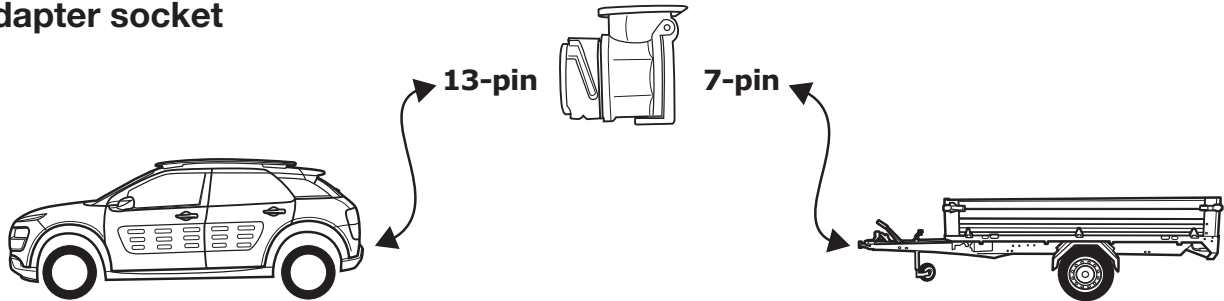
32



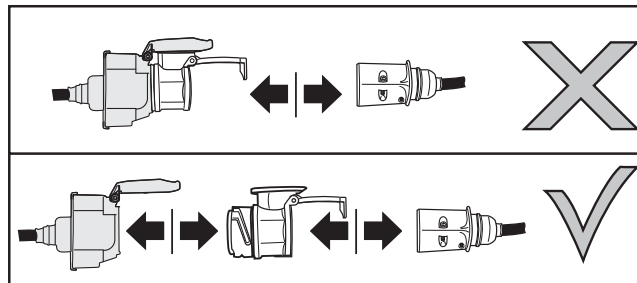
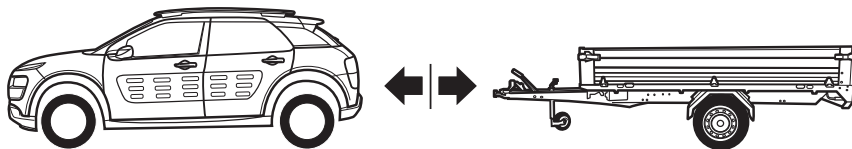
33

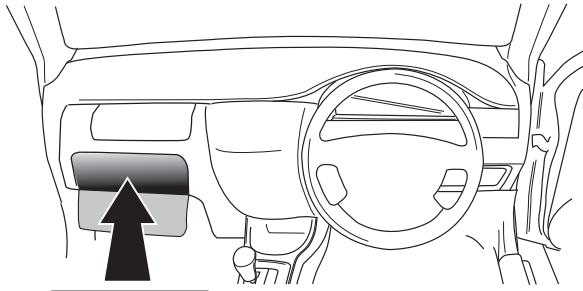
Optional

Adapter socket



34





# User guide



**INFO**

## SOCKET CONNECTION

DIN/ISO 11446													
	1/L	2	3/31	4/R	5/58-R	6/54	7/58-L	8	9	10	11	12	13
Pmax	21W	21W		21W	42W	3x21W	42W	21W	180W/15Amp	180W/15Amp			
Colour	Yellow	Blue	White	Green	Brown	Red 1,00 mm <sup>2</sup>	Black	Black/ Red	Brown/ White	Red 2,50 mm <sup>2</sup>	White	-	White